

WAAS CH <b>82308</b> <b>W21A</b>	APP CRS <b>207°</b>	Rwy Idg TDZE Apt Elev	<b>5500</b> <b>1276</b> <b>1276</b>
--	------------------------	-----------------------------	---

# RNAV (GPS) RWY 21

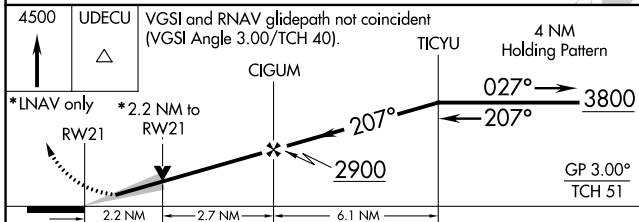
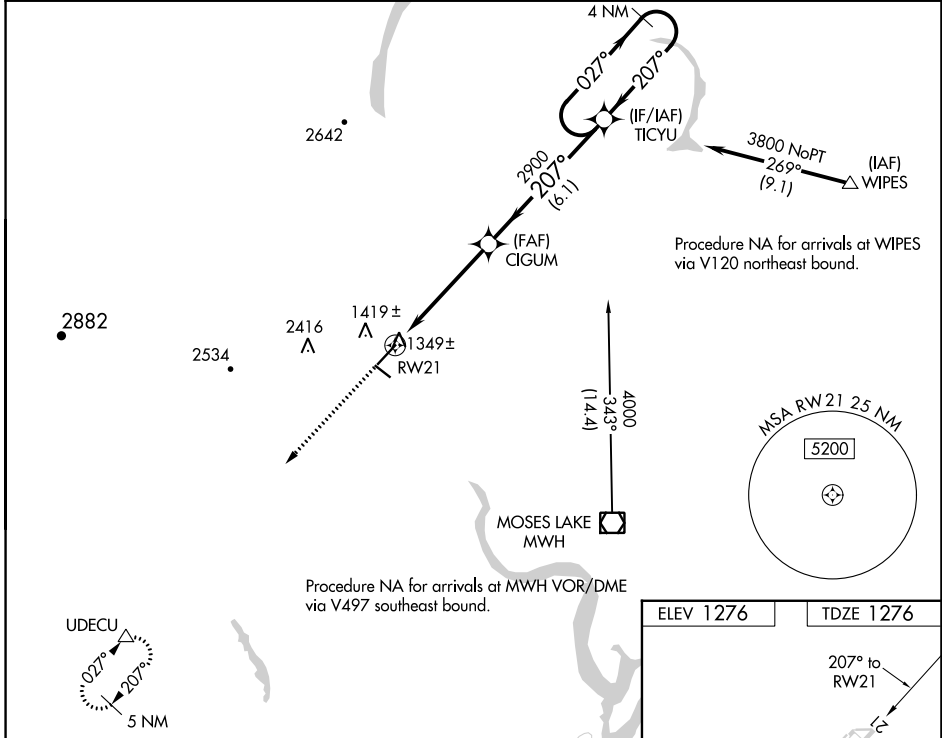
EPHRATA MUNI (EPH)

**RNP APCH.**

▼ For uncompensated Baro-VNAV systems, LNAV/VNAV NA below -17°C or above 46°C. VDP and Baro-VNAV NA when using Moses Lake/Grant County Intl altimeter setting. When local altimeter setting not received, use Moses Lake/Grant County Intl altimeter setting and increase all DA/MDA 40 feet; increase visibility LPV all Cats, and LNAV Cats C and D ¼ SM.

MISSED APPROACH: Climb to 4500 direct UDECU and hold.

ASOS <b>135.775</b>	GRANT COUNTY APP CON * <b>126.4 379.95</b>	UNICOM <b>122.8 (CTAF)</b>
------------------------	---	-------------------------------



ELEV 1276	TDZE 1276
-----------	-----------

1334

3.45 X 150

5500

0.3% GP

3843 X 40

RWY 4-22 for gliders only

207° to RWY 21

2

1

REIL Rwy 3, 11, 21 and 29

MIRL Rwy 11-29 and 3-21

CATEGORY	A	B	C	D
LPV DA		1526-¾	250 (300-¾)	
LNNAV/VNAV DA		2171-4	895 (900-4)	
LNNAV MDA	2020-1 744 (800-1)	2020-1¼ 744 (800-1¼)	2020-2¼ 744 (800-2¼)	2020-2½ 744 (800-2½)

NW-1, 22 FEB 2024 to 21 MAR 2024

NW-1, 22 FEB 2024 to 21 MAR 2024

WAAS CH <b>50208</b> <b>W03A</b>	APP CRS <b>027°</b>	Rwy ldg <b>5500</b> TDZE <b>1269</b> Apt Elev <b>1276</b>
--	------------------------	---

# RNAV (GPS) RWY 3

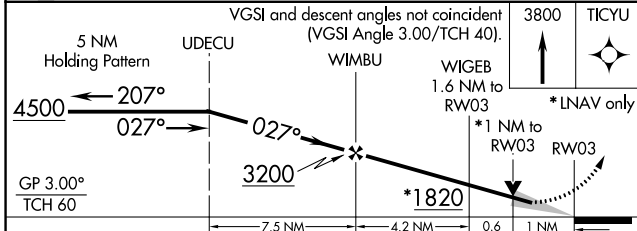
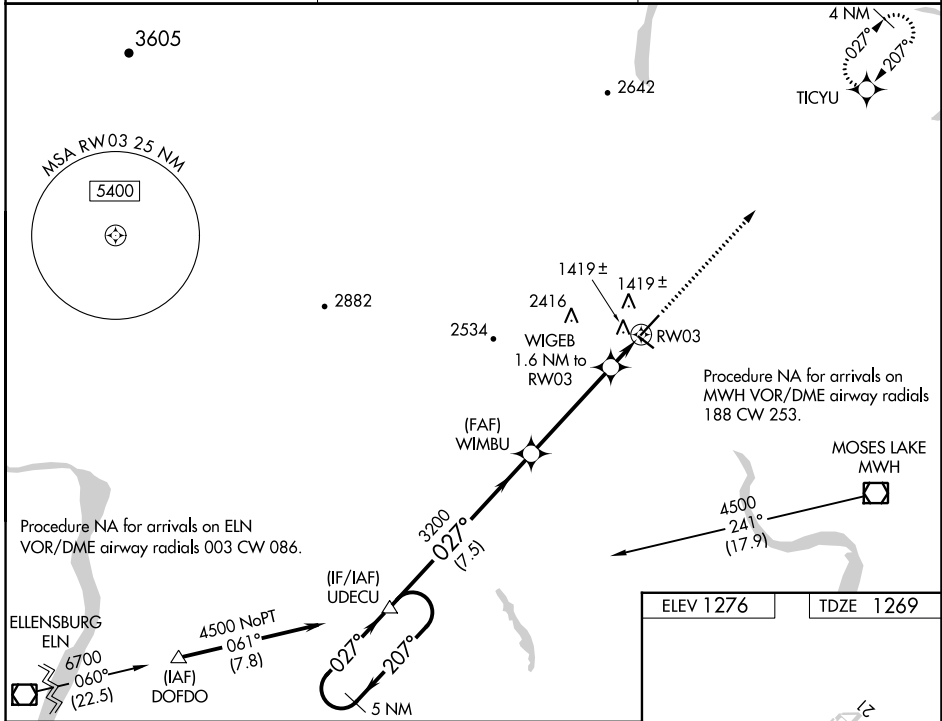
EPHRATA MUNI (EPH)

RNP APCH.

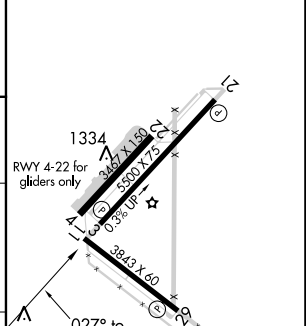
**⚠** For uncompensated Baro-VNAV systems, LNAV/VNAV NA below -17°C or above 46°C. VDP and Baro-VNAV NA when using Moses Lake/Grant County Intl altimeter setting. When local altimeter setting not received, use Moses Lake/Grant County Intl altimeter setting and increase all DA/MDA 40 feet and LNAV Cat C and D visibility 1/4 SM.

MISSED APPROACH: Climb to 3800 direct TICYU and hold.

ASOS <b>135.775</b>	GRANT COUNTY APP CON * <b>126.4 379.95</b>	UNICOM <b>122.8 (CTAF) 0</b>
------------------------	---	---------------------------------



ELEV 1276	TDZE 1269
-----------	-----------



CATEGORY	A	B	C	D
LPV DA	1519-1		250 (300-1)	
LNAV/VNAV DA	1689-1½		420 (500-1½)	
LNAV MDA	1680-1 411 (500-1)		1680-1¼ 411 (500-1¼)	

REIL Rwy 3, 11, 21 and 29 **0**  
MIRL Rwy 11-29 and 3-21 **0**

NW-1, 22 FEB 2024 to 21 MAR 2024

NW-1, 22 FEB 2024 to 21 MAR 2024

VORTAC EPH <b>112.6</b> Chan <b>73</b>	APP CRS <b>202°</b>	Rwy ldg <b>5500</b> TDZE <b>1276</b> Apt Elev <b>1276</b>
--	------------------------	---

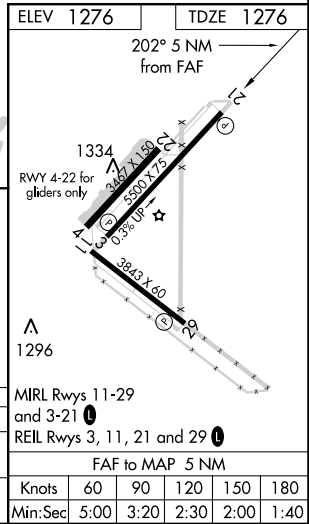
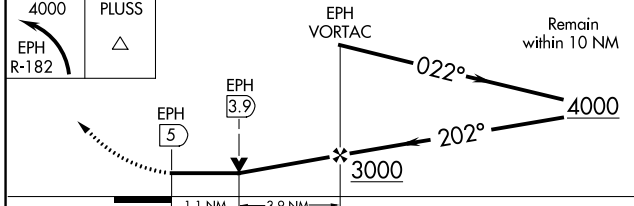
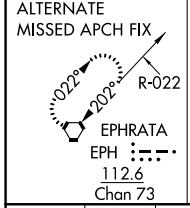
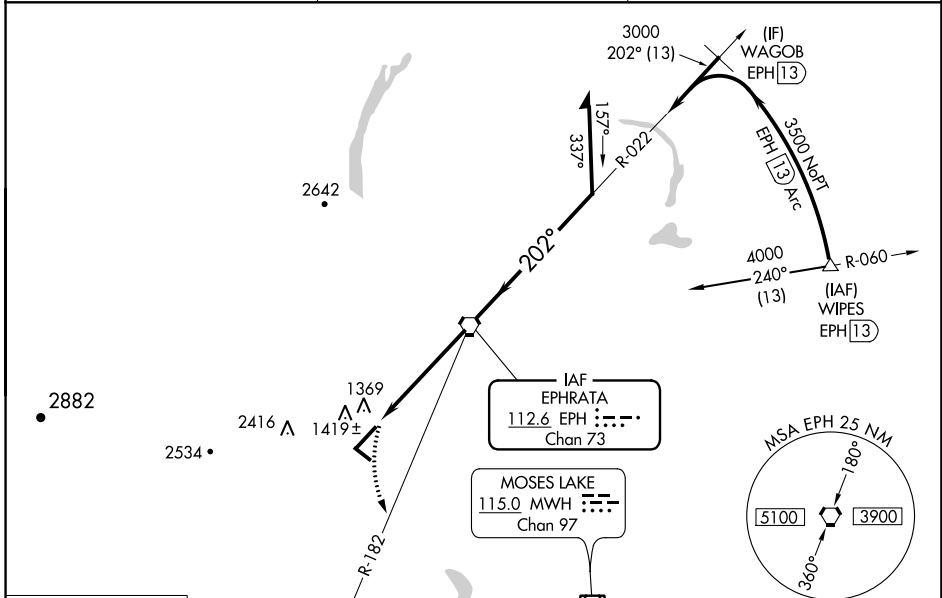
# VOR RWY 21

EPHRATA MUNI (EPH)

**⚠** When local altimeter setting not received, use Moses Lake/Grant County Intl altimeter setting and increase all MDA 40 feet, increase S-21 Cat D visibility ¼ mile. VDP NA when using Moses Lake/Grant County Intl altimeter setting. Final approach from EPH VORTAC holding pattern not authorized. Procedure turn required. Circling NA for Cats B, C and D northwest of Rwy 03-21.

**MISSED APPROACH:** Climbing left turn to 4000 via EPH R-182 to PLUS INT/EPH 13.3 DME and hold. Continue climb-in-hold to 4000.

ASOS <b>135.775</b>	GRANT COUNTY APP CON* <b>126.4 379.95</b>	UNICOM <b>122.8 (CTAF)</b>
------------------------	--	-------------------------------



CATEGORY	A	B	C	D
S-21	1680-1	404 (500-1)	1680-1¼	404 (500-1¼)
CIRCLING	1740-1 464 (500-1)	1740-1 464 (500-1)	1780-1½ 504 (600-1½)	2500-3 1224 (1300-3)

NW-1, 22 FEB 2024 to 21 MAR 2024

NW-1, 22 FEB 2024 to 21 MAR 2024