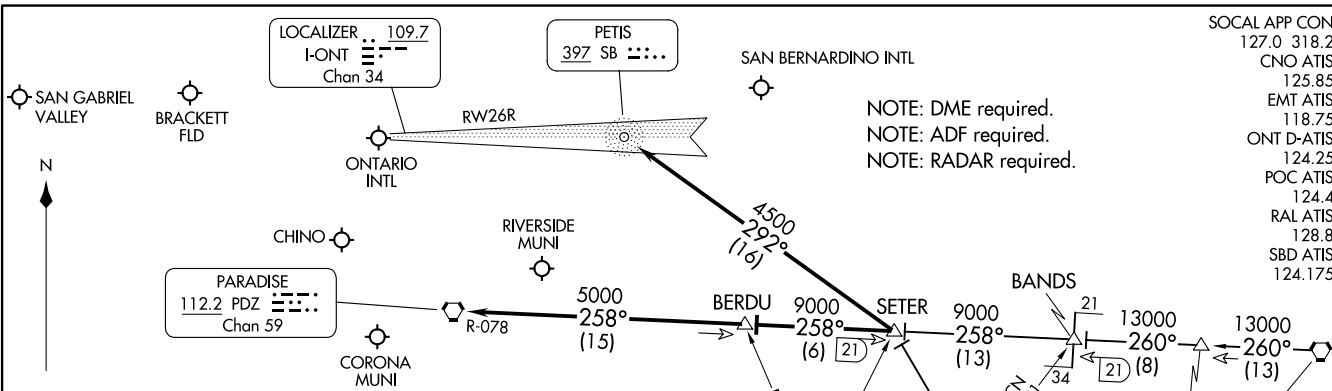


SETER FIVE ARRIVAL  
(SETER,SETER5) 17AUG17



(SETER,SETER5) 23278  
SETER FIVE ARRIVAL

AL-965 (FAA)

ONTARIO, CALIFORNIA

ARRIVAL ROUTE DESCRIPTION

JULIAN TRANSITION (JLI.SETER5): From over JLI VORTAC on JLI R-315 to SETER. Thence. . .

PALM SPRINGS TRANSITION (PSP.SETER5): From over PSP VORTAC on PSP R-260 to BANDS, then on PDZ R-078 to SETER. Thence. . .

LANDING ONTARIO INTL

RUNWAYS 26L/R: From over SETER on SB NDB 292° course to SB NDB; expect ILS approach.

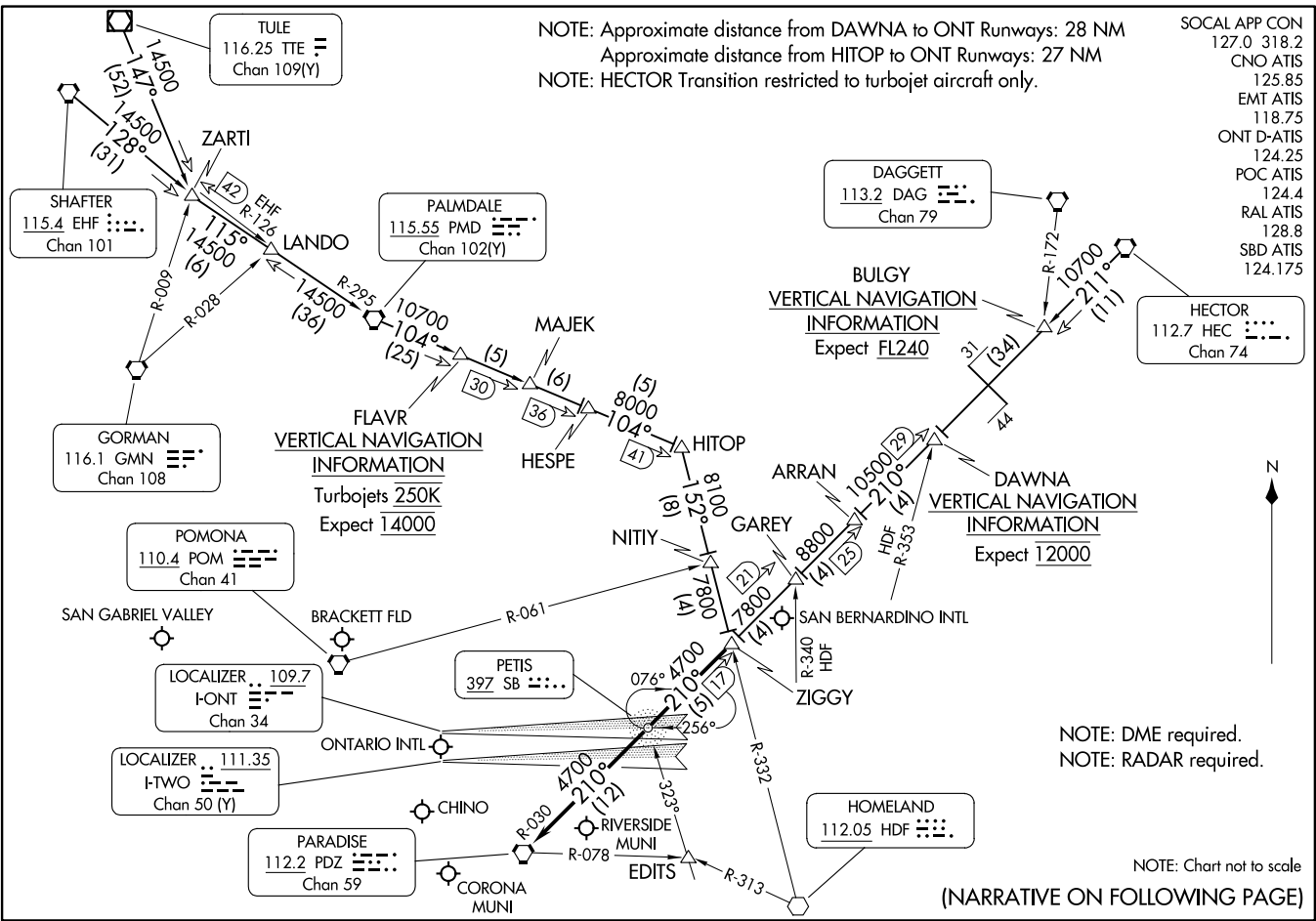
RUNWAYS 8L/R: From over SETER on PDZ R-078 to BERDU, then on PDZ R-078 to PDZ VORTAC; expect vectors to final approach course.

ALL OTHER AIRPORTS

From over SETER via PDZ R-078 to BERDU, then on PDZ R-078 to PDZ VORTAC; expect vectors to final approach course.

NOTE: Chart not to scale.

ONTARIO, CALIFORNIA



- SOCAL APP CON
- 127.0 318.2
- CNO ATIS
- 125.85
- EMT ATIS
- 118.75
- ONT D-ATIS
- 124.25
- POC ATIS
- 124.4
- RAL ATIS
- 128.8
- SBD ATIS
- 124.175

ARRIVAL ROUTE DESCRIPTION

HECTOR TRANSITION (HEC.ZIGGY7): From over HEC VORTAC on HEC R-211 and PDZ R-030 to ZIGGY. Thence . . . .

PALMDALE TRANSITION (PMD.ZIGGY7): From over PMD VORTAC on PMD R-104 to HITOP, then on HDF R-332 to ZIGGY. Thence . . . .

SHAFTER TRANSITION (EHF.ZIGGY7): From over EHF VORTAC on EHF R-128 and PMD R-295 to PMD VORTAC, then on PMD R-104 to HITOP, then on HDF R-332 to ZIGGY. Thence . . . .

TULE TRANSITION (TTE.ZIGGY7): From over TTE VOR/DME on TTE R-147 and PMD R-295 to PMD VORTAC, then on PMD R-104 to HITOP, then on HDF R-332 to ZIGGY. Thence . . . .

LANDING ONTARIO INTL

RUNWAYS 8L/R: From over ZIGGY on PDZ R-030 to PDZ VORTAC; expect RADAR vectors to final approach course.

RUNWAYS 26 L/R: From over ZIGGY direct PETIS NDB or on PDZ R-030 to PETIS; expect RADAR vectors for ILS approach.

ALL OTHER AIRPORTS

From over ZIGGY on PDZ R-030 to PDZ VORTAC; expect RADAR vectors to final approach course.

SW-3, 22 FEB 2024 to 21 MAR 2024

SW-3, 22 FEB 2024 to 21 MAR 2024