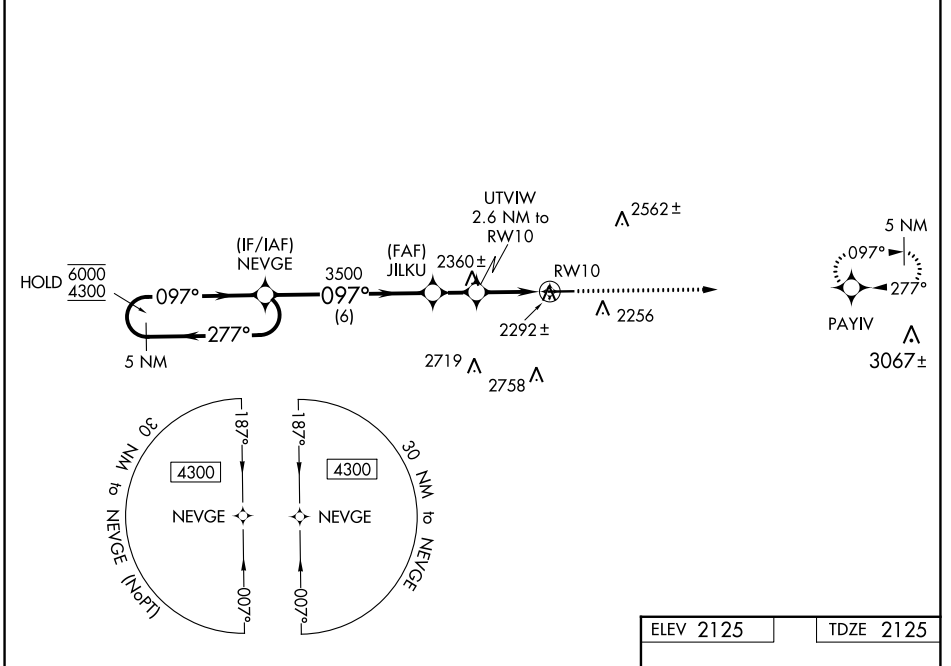


WAAS CH 87002 W10A	APP CRS 097°	Rwy Idg TDZE Apt Elev	5100 2125 2125
--	------------------------	-----------------------------	---

RNAV (GPS) RWY 10

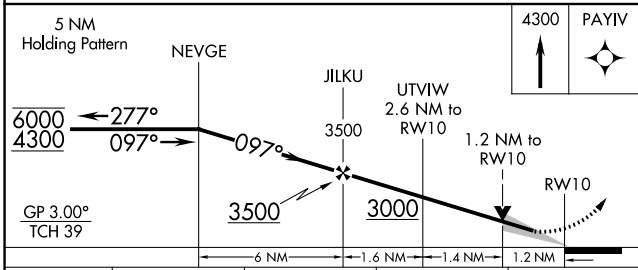
WELLSVILLE MUNI/TARANTINE FLD (E/LZ)

RNP APCH - GPS.		MISSED APPROACH: Climb to 4300 direct PAYIV and hold.
	For uncompensated Baro-VNAV systems, LNAV/VNAV NA below -20°C or above 54°C.	
ASOS 119.275	CLEVELAND CENTER 124.325 353.85	UNICOM 123.0 (CTAF) 1



NE-2, 22 FEB 2024 to 21 MAR 2024

NE-2, 22 FEB 2024 to 21 MAR 2024



ELEV 2125	TDZE 2125
HRL Rwy 10-28 1 REIL Rwy 10 1	

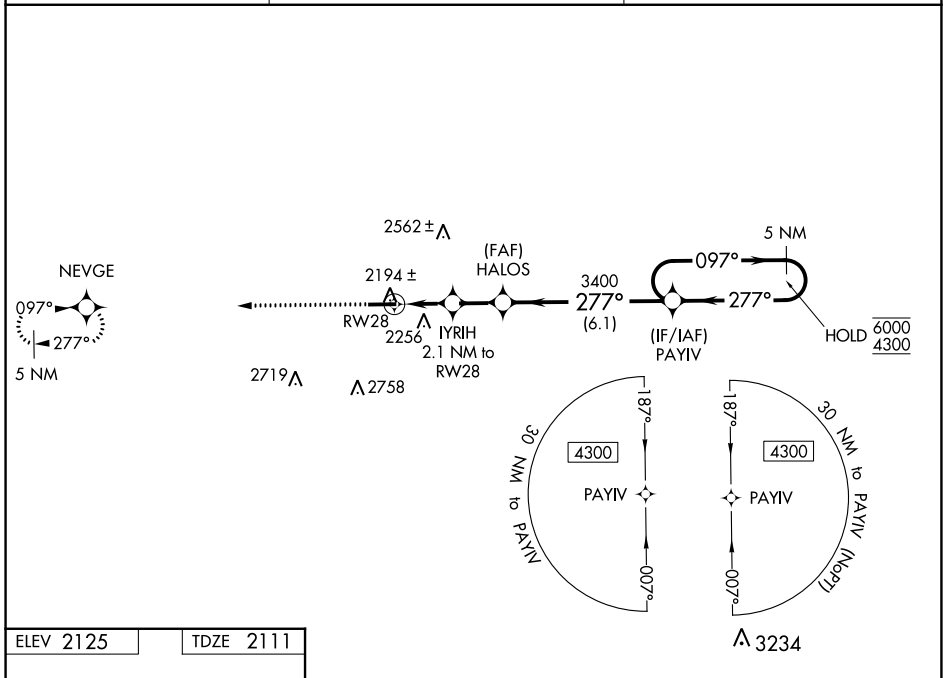
CATEGORY	A	B	C	D
LPV DA		2375-3/4	250 (300-3/4)	
LNAV/VNAV DA		2453-1	328 (400-1)	
LNAV MDA	2560-1	435 (500-1)	2560-1 1/4	435 (500-1 1/4)
CIRCLING	2640-1 515 (600-1)	2660-1 535 (600-1)	2880-2 1/4 755 (800-2 1/4)	3060-3 935 (1000-3)

WAAS CH 49102 W28A	APP CRS 277°	Rwy Idg TDZE Apt Elev	5300 2111 2125
--	------------------------	-----------------------------	---

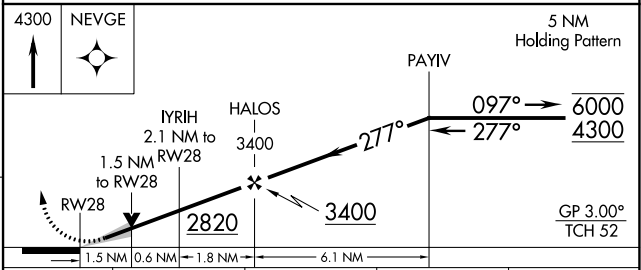
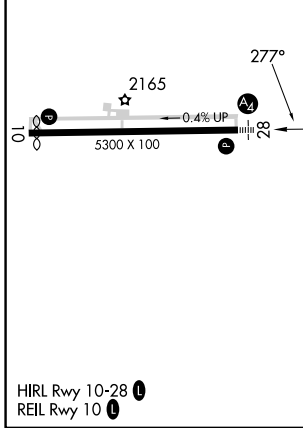
RNAV (GPS) RWY 28

WELLSVILLE MUNI/TARANTINE FLD (E/LZ)

RNP APCH - GPS.		MALS	MISSED APPROACH: Climb to 4300 direct NEVGE and hold.
Inop table does not apply to LPV and LNAV/VNAV. For uncompensated Baro-VNAV systems, LNAV/VNAV NA below -20°C or above 54°C.			
ASOS 119.275	CLEVELAND CENTER 124.325 353.85	UNICOM 123.0 (CTAF)	



ELEV 2125	TDZE 2111
-----------	-----------



CATEGORY	A	B	C	D
LPV DA		2311- ³ / ₄	200 (200- ³ / ₄)	
LNAV/VNAV DA		2369- ³ / ₄	258 (300- ³ / ₄)	
LNAV MDA	2460- ³ / ₄	349 (400- ³ / ₄)	2460-1 ¹ / ₄	349 (400-1 ¹ / ₄)
CIRCLING	2640-1 515 (600-1)	2660-1 535 (600-1)	2880-2 ¹ / ₄ 755 (800-2 ¹ / ₄)	3060-3 935 (1000-3)

NE-2, 22 FEB 2024 to 21 MAR 2024

NE-2, 22 FEB 2024 to 21 MAR 2024