

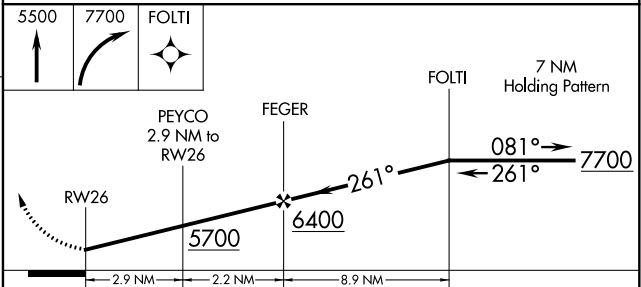
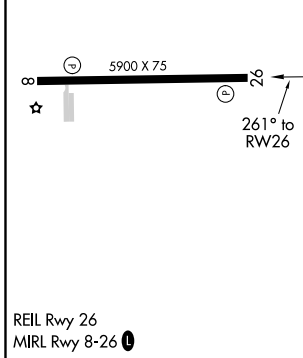
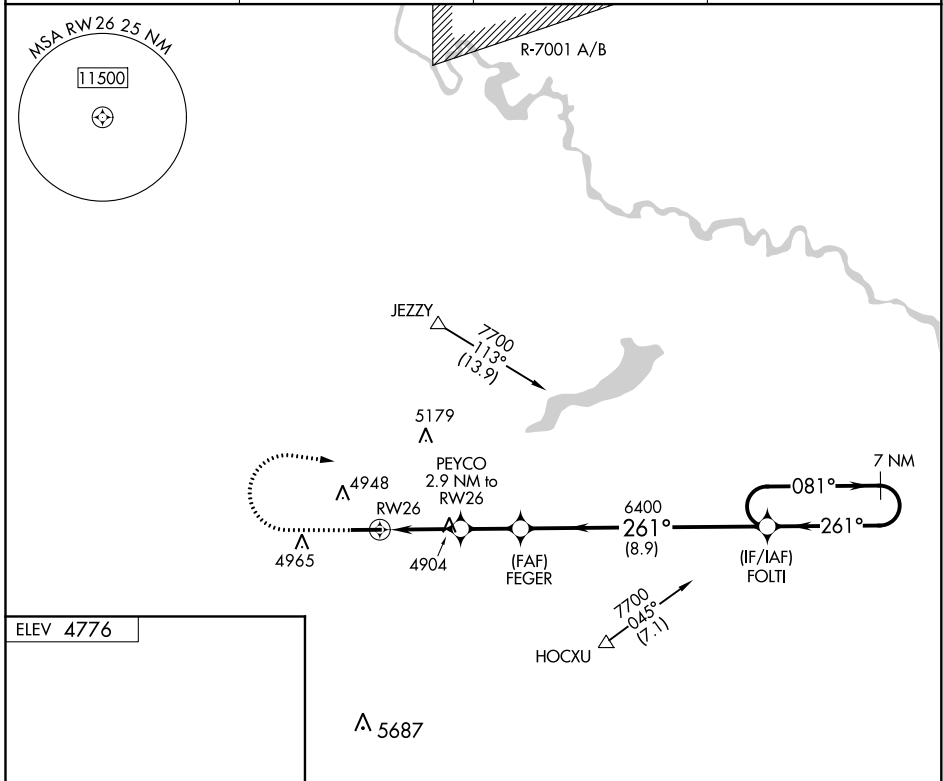
APP CRS <b>261°</b>	Rwy Idg TDZE Apt Elev	<b>N/A</b> <b>N/A</b> <b>4776</b>
------------------------	-----------------------------	---

**RNAV (GPS)-A**  
PHIFER AIRFIELD (EAN)

**NA** Use Torrington altimeter setting; when not received, use Western Nebraska Rgnl/ William B Heilig Fld altimeter setting and increase all MDA 100 feet and Cat C visibility ¼ mile. DME/DME RNP-0.3 NA. Helicopter visibility reduction below 1 SM not authorized. Night landing: Rwy 8 NA.

MISSED APPROACH: Climb to 5500 then climbing right turn to 7700 direct FOLTI and hold.

AWOS-3PT <b>121.125</b>	TOR ASOS <b>118.375</b>	DENVER CENTER <b>135.6 363.025</b>	CTAF <b>122.90</b>
----------------------------	----------------------------	---------------------------------------	-----------------------



CATEGORY	A	B	C	D
<b>C</b> CIRCLING	5420-1 644 (700-1)	5440-1 664 (700-1)	5460-2 684 (700-2)	NA

NW-1, 07 OCT 2021 to 04 NOV 2021

NW-1, 07 OCT 2021 to 04 NOV 2021