
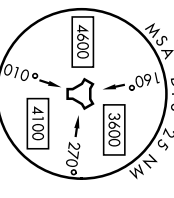
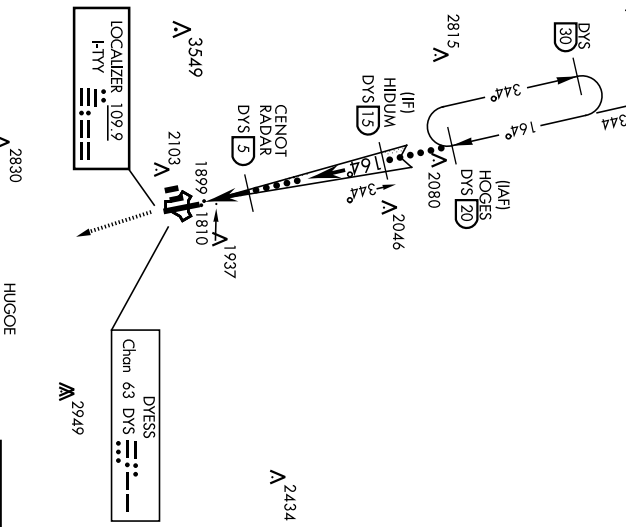
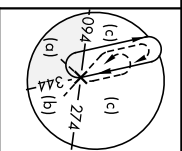


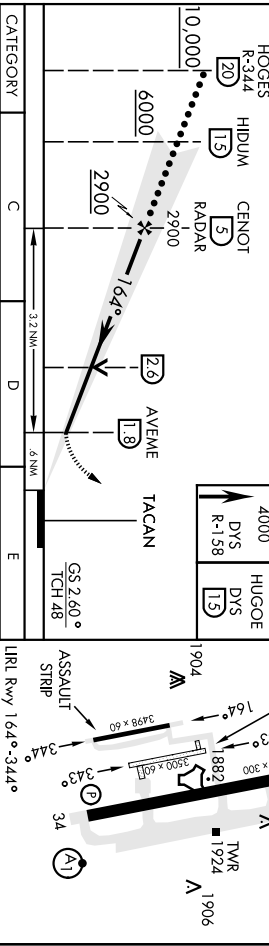
# HILLS or LOCX RWY 16

DYESS AFB (KDYS)

LOC I-TRY <b>109.9</b>	APCH CRS <b>164°</b>	Rwy Idg TDZE Appr Elev <b>1790</b>	AL-2 (USAF)	AISF-1 	MISSED APPROACH: Climb to 4000 via DYS TACAN R-158 to HUGOE and hold.	GND CON <b>118.35 275.8</b>	ASR
RADAR or DME required:		*** Circling to other than Rwy 34 N/A.					
* When AIS inop, increase CAT CDE RVR to 40 and vix to 3/4 mile.		** When AIS inop, increase CAT CDE RVR vis to 1 1/4 miles.					
ATIS *	ABILENE APP CON <b>125.0 338.3 EAST</b>	TOWER <b>133.0 257.675</b>					
	<b>269.175</b>	<b>127.2 282.3 WEST</b>					



ELEV	1790	TDZE	1790
<p>HUGOE HDJMS 15 HUGOE 4000 DYS R-158</p> <p>ASSAULT STRIP 1926 1904 1882 1825 1962</p> <p>ASSAULT STRIP 1926 1882 1825 1962</p> <p>TWR 1924 1906</p>			



CATEGORY	C	D	E
SL-LS 16 *	1990/24	200	(200-1/2)
S-LOC 16 ***	2220/40	430	(500-3/4)
CRCLING	2460-13/4 670 (700-13/4)	2460-2 670 (700-2)	2460-2 1/4 670 (700-2 1/4)

ABILENE, TEXAS  
 32°25'N-99°51'W  
 DYESS AFB (KDYS)  
 Aprch 3 10NOV16

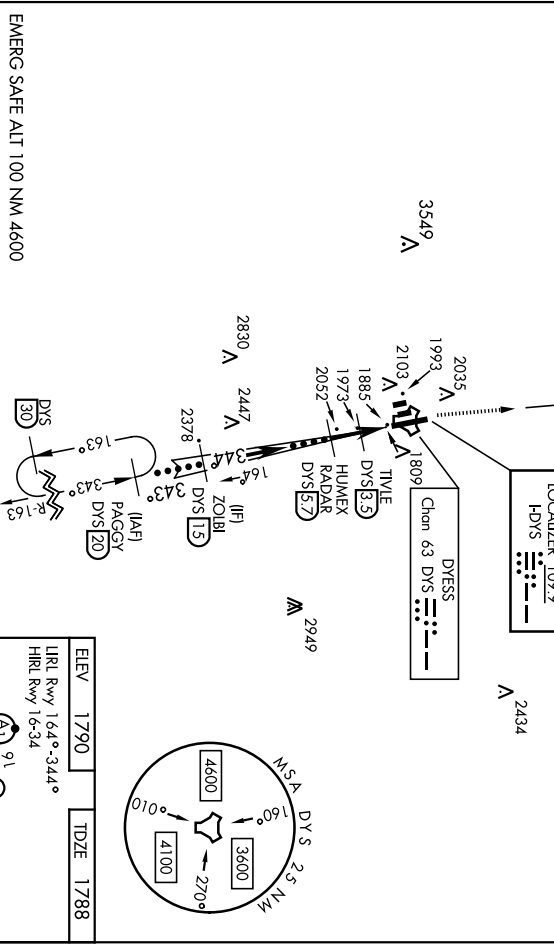
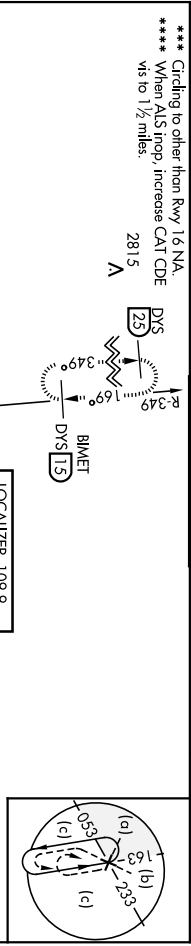
# HILLS or LOCX RWY 16

ABILENE, TEXAS

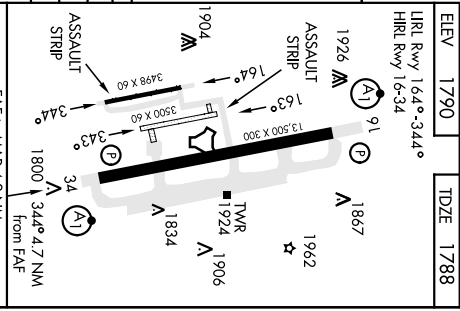
21280

# HILLS or LOC X RWY 34

<b>LOC 1-DYS</b> 109.9	<b>APCH CRS</b> 344°	<b>Rwy Idg</b> 1788	<b>TDZE</b> 1790	<b>ASFS-I</b> 	<b>MISSED APPROACH:</b> Climb to 4000 via DYS TACAN R-349 to BIMET and hold.	<b>ASR</b>
<b>RADAR or DME required.</b>						
* When ALS inop, increase CAT DDE RVR to 40 and vis to 3/4 mile. ** When ALS inop, increase CAT CDE vis to 1 1/2 miles.				<b>ATIS *</b> 269.175	<b>ABILENE APP CON</b> 125.0 338.3 EAST 127.2 282.3 WEST	<b>TOWER</b> 133.0 257.675
				<b>ASR</b>	<b>GND CON</b> 118.35 275.8	



<b>EMERG SAFE ALT 100 NM 4600</b>					
<b>4000</b>	<b>BIMET</b> DYS R-349	<b>15</b>			
	<b>TACAN</b>				
	<b>HEPDM</b>				
	<b>TWLE</b>				
	<b>HUMEX</b>				
	<b>RADAR</b>				
	<b>ZOLBI</b>				
	<b>PAGGY</b>				
	<b>CS 2.50°</b>				
	<b>TCH 51</b>				
<b>CATEGORY</b>	C				
<b>SILS 34 *</b>	1988/24 200 (200-1/2)				
<b>S-LOC 34 ***</b>	2240/45 452 (500-7/8)				
<b>S-LOC 34 ***</b>	2460-1 1/4 670 (700-1 1/4)				
<b>S-LOC 34 ***</b>	2460-2 670 (700-2)				
<b>S-LOC 34 ***</b>	2460-2 1/4 670 (700-2 1/4)				
<b>S-LOC 34 ***</b>	WITHOUT LAST STEPDOWN FX				
<b>S-LOC 34 ***</b>	2320/55 532 (600-1)				
<b>ABILENE, TEXAS</b>	32°25'N-99°51'W				
<b>Amth 3 10NOV16</b>	<b>DYESS AFB (KDYS)</b>				



TACAN DYS Chan 63	APCH CRS 169°	Rwy Idg 13,500	TDZE 1790	Appt Elev 1790
----------------------	------------------	-------------------	--------------	-------------------

JAL-2 [USAFI]

DYESS AFB (KDYS)

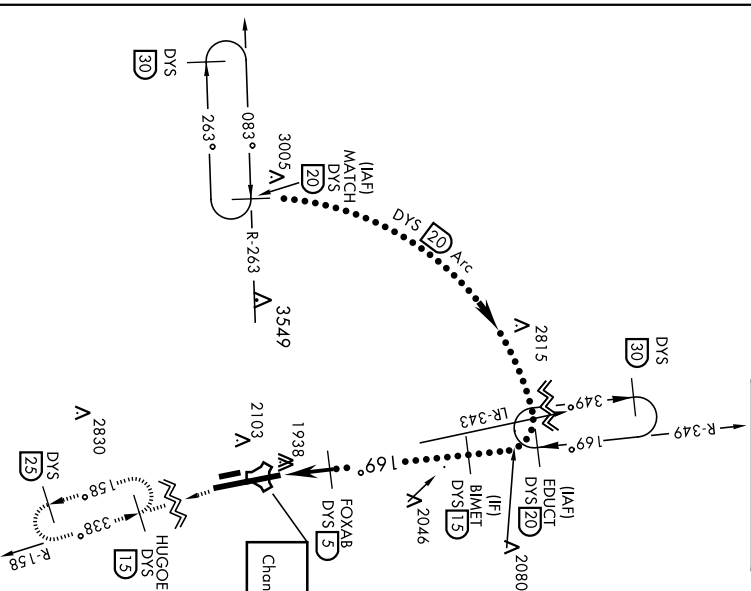
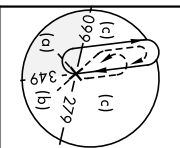
\* When ALS inop, increase CAT DCE vis to 1 1/2 miles.  
 \*\* Circling to other than Rwy 34 NA



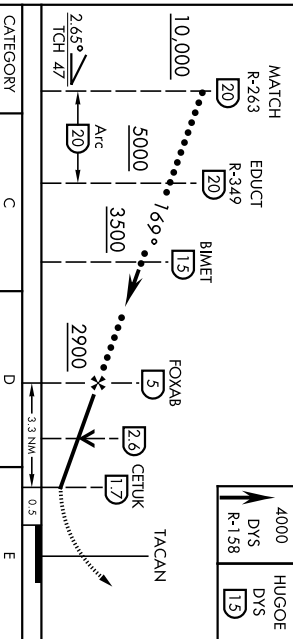
MISSED APPROACH: Climb to 4000 via  
 DYS TACAN R-158 to HUGOE and hold.

ATIS *	ABILENE APP CON	DYESS TOWER
269.175	125.0 338.3 EAST 127.2 282.3 WEST	133.0 257.675

GND CON	ASR
118.35 275.8	



EMERG SAFE ALT 100 NM 4600

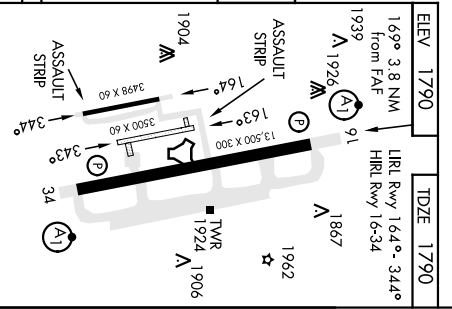


CATEGORY	C	D	E
S-1-6 *	2220/40	430 (500-34)	

CIRCLING **	2460-1 3/4 670 (700-1 1/2)	2460-2 670 (700-2)	2460-2 1/2 670 (700-2 1/2)
	ABILENE, TEXAS 32°25'N-99°51'W		

ABILENE, TEXAS  
 Amhd 3 10NOV16  
 HI-TACAN X RWY 16  
 DYESS AFB (KDYS)

ELEV 1790	TDZE 1790
169° 3.8 NM from FAF	LRL Rwy 164°-344°
1939	HRL Rwy 16-34
A 1926	A 1887
A 91	A 1906



FAF to MAP 3.3 NM					
Knots	120	140	160	180	200
Min:Sec	1:39	1:25	1:14	1:06	0:59

TACAN DYS Chan 63	APCH CRS 338°	Rwy Idg 13.500	TDZE 1788
		Appt Elev 1790	

JAL-2 (USAFI)

ATIS *	ABILENE APP CON 125.0 338.3 EAST 127.2 282.3 WEST	DYESS TOWER 133.0 257.675
--------	---	------------------------------

ALSF-1  
A1

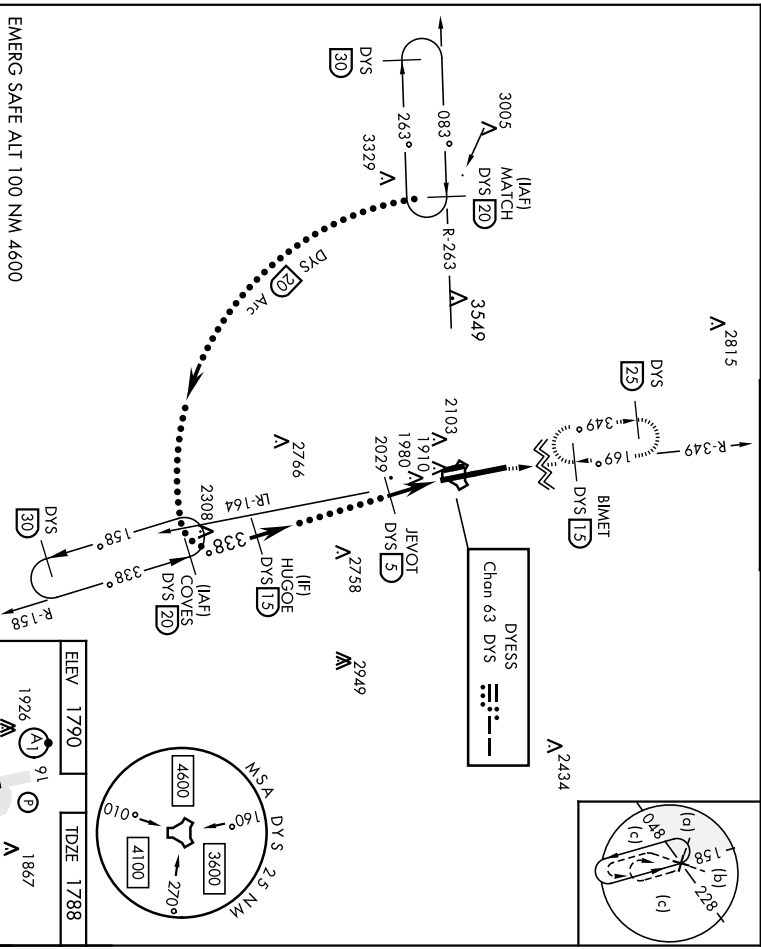
MISSED APPROACH: Climb to 4000 via  
DYS TACAN R-349 to BIOMET and hold.

DYESS AFB (KDYS)

GND CON 269.175	ASR
--------------------	-----

ASR

\* When ALS Inop, increase CAT CDE vis to 1 3/8 miles.  
\*\* Circling to other than Rwy 16 NA.



EMERG SAFE ALT 100 NM 4600

4000 DYS BIOMET  
R-349 DYS 15  
VCSI and descent angles not coincident  
(VCSI Angle 2.50/TCH 53)

CATEGORY	C	D	E
S-34 *	2280/50	492 (500-1)	
Ⓞ CIRCLING **	2460-1 3/4 670 (700-1 3/4)	2460-2 670 (700-2)	2460-2 1/4 670 (700-2 1/4)

ELEV 1790	TDZE 1788
1926 A1	1867 A
1904 A	1962 *
164°	163°
3498 x 60	3500 x 60
344°	343°
34°	34°
ASSAULT STRIP	ASSAULT STRIP
13,500 x 300	13,500 x 300
164° - 344°	164° - 344°
LRL Rwy 16-34	LRL Rwy 16-34
HRL Rwy 16-34	HRL Rwy 16-34
FAF to MAP 3.5 NM	FAF to MAP 3.5 NM
3398 4.0 NM from FAF	3398 4.0 NM from FAF
1906 TWR	1924 TWR

Mins:Sec	1:45	1:30	1:19	1:10	1:03
Knots	120	140	160	180	200

ABILENE, TEXAS  
DYESS AFB (KDYS)

Aprch 3 10NOV16

HI-TACAN X RWY 34

# ILS or LOC W Rwy 16

LOC I-FTY	APCH CRS	Rwy Idg	<b>13.500</b>
<b>109.9</b>	<b>164°</b>	TDZE Agtl Elev	<b>1790</b> <b>1790</b>

AL-2 [USAF]

DYESS AFB (KDYS)

\* When ALS Inop, increase all CAT RVR to 40 and vis to  $\frac{3}{8}$  mile.  
 \*\* When ALS Inop, increase CAT AB RVR to 55 and vis to 1 mile. CAT CDE vis to 1 1/2 miles.



MISSED APPROACH: Climb to 4000 via  
 DYS TACAN R-158 to HUGO and hold.

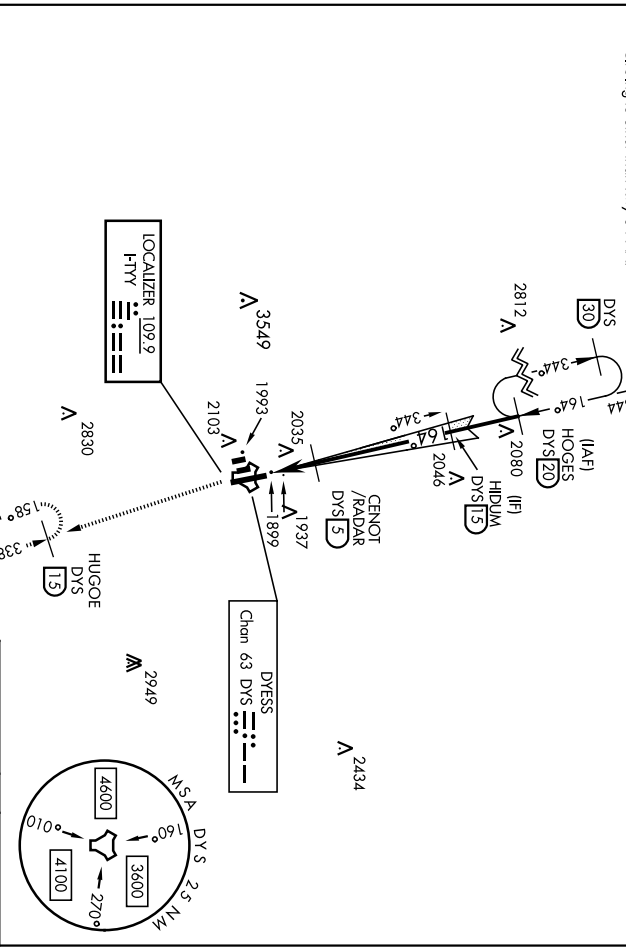
ATIS *	ABILENE APP CON	<b>125.0</b>	<b>338.3</b>	EAST
<b>269.175</b>	<b>127.2</b>	<b>282.3</b>	WEST	

DYESS TOWER	<b>133.0</b>	<b>257.675</b>
-------------	--------------	----------------

GND CON	<b>118.35</b>	<b>275.8</b>
---------	---------------	--------------

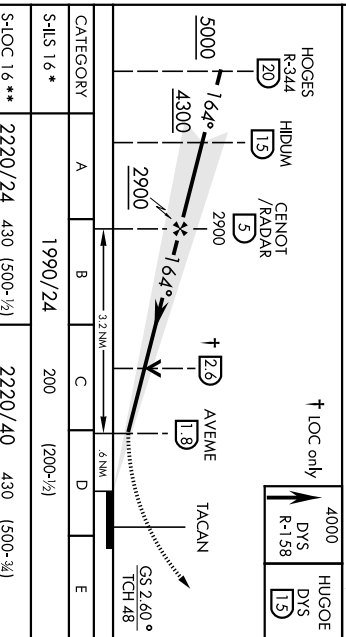
ASR

\*\*\* Circling to other than Rwy 34 NA.



## RADAR or DME REQUIRED

EMERG SAFE ALIT 100 NM 4600



CATEGORY	A	B	C	D	E
S-ILS 16 **		1990/24	200	(200-1/2)	
S-LOC 16 ***	2220/24	430 (500-1/2)	2220/40	430 (500-3/4)	

	2300-1	2320-1	2460-1 3/4	2460-2	2460-2 1/4
	510 (600-1)	530 (600-1)	670 (700-1 1/2)	670 (700-2)	670 (700-2 1/4)



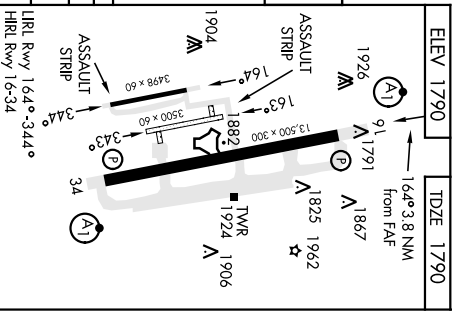
ABILENE, TEXAS

Amth 3 10NOV16

32°25'N-99°51'W

# ILS or LOC W Rwy 16

DYESS AFB (KDYS)



	60	90	120	150	180
Min:Sec	3:12	2:08	1:36	1:17	1:04

LOC -HDVS	ARCH CRS	Rwy Idg	<b>13 500</b>
<b>109.9</b>	<b>344°</b>	TDZE	<b>1788</b>
		Appt Elev	<b>1790</b>

AL-2 (USA/F)

\* When ALS Inop, increase dfl CAT RVR to 40 and vis to 3/4 mile.  
 \*\* When ALS Inop, increase CAT AB RVR to 55 and vis to 1 mile.  
 CAT CDE vis to 1/8 miles.

ALST-1	
--------	--

MISSED APPROACH: Climb to 4000 via  
 DYS TACAN R-349 to BIOMET and hold.

DYESS AFB (KDYS)

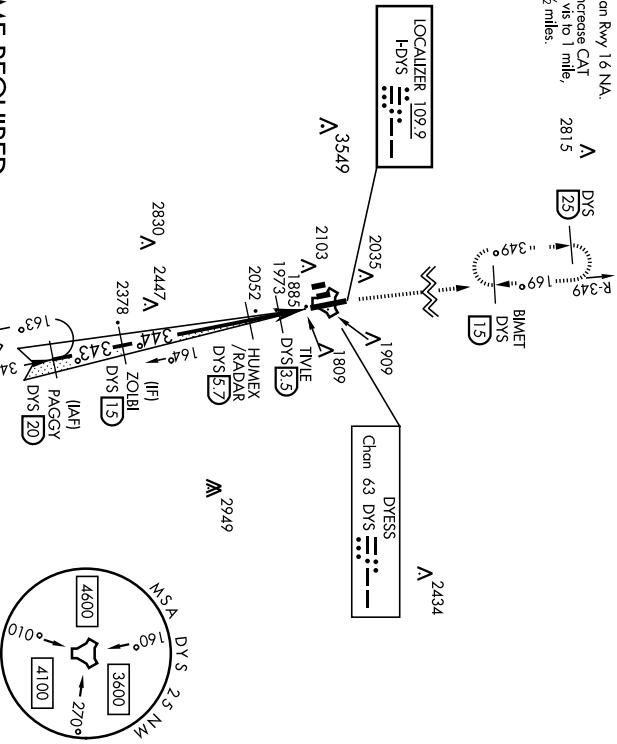
ATIS *	ABILENE APP CON
<b>269.175</b>	<b>125.0 338.3 EAST</b>
	<b>127.2 282.3 WEST</b>

DYESS TOWER	<b>133.0 257.675</b>
-------------	----------------------

GND CON	<b>118.35 275.8</b>
---------	---------------------

ASR	
-----	--

\*\*\*\* Circling to other than Rwy 16 NM.  
 \*\*\*\*\* When ALS Inop, increase CAT AB RVR to 55 and vis to 1 mile.  
 CAT CDE vis to 1 1/2 miles.



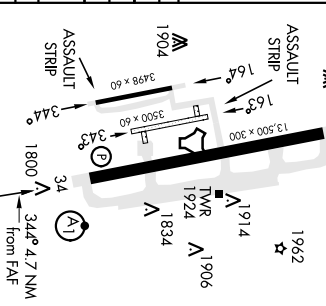
**RADAR or DME REQUIRED**

EMERG SAFE ALT 100 NM 4600

4000	BIOMET	TLOC only	HUEMEX /RADAR	ZOLBI	PAGGY
R-349	DYS [15]		[E7]	[15]	[20]

ELEV 1790	TDZE 1788
URL Rwy 164° -344°	HLR Rwy 16-34

CATEGORY	A	B	C	D	E
S-ILS 34*	1988/24		200		[200-1/2]
S-LOC 34***	2240/24 452 (500-1/2)		2240/45 452 (500-1/2)		
CIRCLING***	2300-1 530 (600-1)	2320-1 530 (600-1)	2460-1 530 (700-2)	2460-2 530 (700-2)	2460-2 1/2 670 (700-2 1/2)
WITHOUT LAST STEPDOWN FIX					
S-LOC 34	2320/24 532 (600-1/2)		2320/55 532 (600-1)		
CIRCLING***	2320-1 530 (600-1)		2460-1 530 (700-2)	2460-2 530 (700-2)	2460-2 1/2 670 (700-2 1/2)

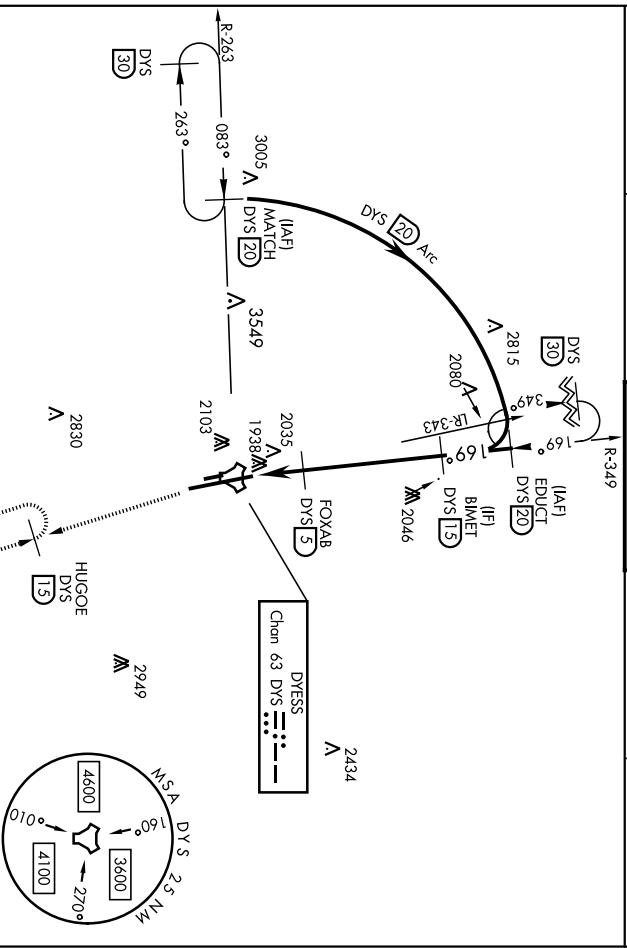


Knots	FAF to MAP 4.2 NM					
	60	90	120	150	180	
Mins:Sec	4:12	2:48	2:06	1:41	1:24	

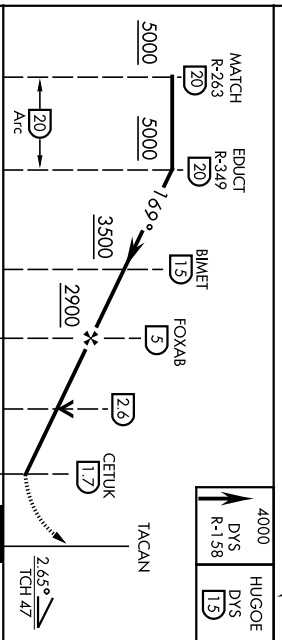
ABILENE, TEXAS DYESS AFB (KDYS)

TACAN DYS Chan <b>63</b>	APCH CRS <b>169°</b>	Run-Ideg <b>13 500</b>	TOTL Elev <b>1790</b>	ALSIF-1 <b>A1</b>	MISSED APPROACH: Climb to 4000 via DYS TACAN R-158 to HUGOE and hold.
ABILENE APP CON	DYESS TOWER	GND CON	ASR		
ATIS * <b>269.175</b>	<b>125.0 338.3 EAST</b> <b>127.2 282.3 WEST</b>	<b>133.0 257.675</b>	<b>118.35 275.8</b>		

\* When ALS Inop, increase CAT AB RVR to 55 and vis to 1 mile, CAT CDE vis to 1 1/4 miles.  
\*\* Circling to other than RWY 34 NA



EMERG SAFE ALT 100 NM 4600



CATEGORY	A	B	C	D	E
S-1 & *	2220/24 430 (500-1/2)	2220/40 430 (500-1/2)			
** CIRCLING	2300-1 510 (600-1)	2320-1 530 (600-1)	2460-1 3/4 670 (700-1 3/4)	2460-2 670 (700-2)	2460-2 1/4 670 (700-2 1/4)
FAF to MAP 3.3 NM					
	Knots	60	90	120	150
	Min:Sec	3:18	2:12	1:39	1:19

ABILENE, TEXAS  
Amhd 3 10NOV16  
32°25'N-99°51'W  
DYESS AFB (KDYS)  
TACAN W RMY 16

ABILENE, TEXAS

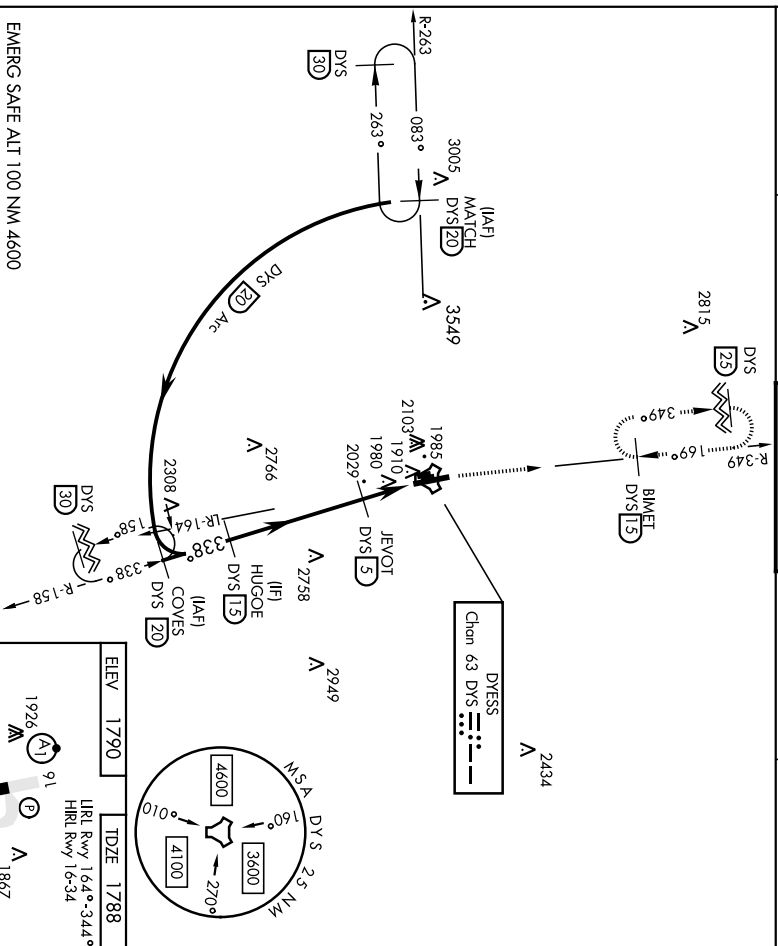
14315

# TACAN W RWY 34

DYESS AFB (KDYS)

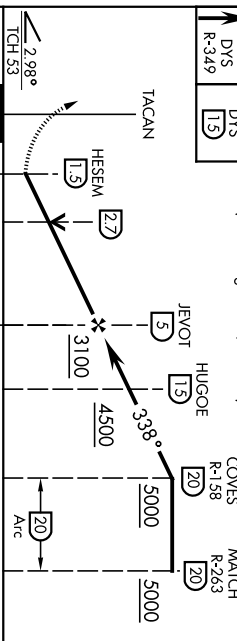
TACAN DYS Chan <b>63</b>	APCH CRS <b>338°</b>	Pub. Idg TDZE Apt/Elev: <b>1788</b> <b>1790</b>	AL-2 (USAFI)	ALSF-1 	MISSED APPROACH: Climb to 4000 via DYS TACAN R-349 to BIOMET and hold.
ATIS * <b>269.175</b>	ABILENE APP CON <b>125.0 338.3 EAST</b> <b>127.2 282.3 WEST</b>	DYESS TOWER <b>133.0 257.675</b>	GND CON <b>118.35 275.8</b>	ASR	

\* When ATIS Inop, Increase CAT AB RWY to 55 and vis to 1 mile, CAT CDE vis to 1 1/2 miles.  
\*\* Circling to other than RWY 16 N/A.

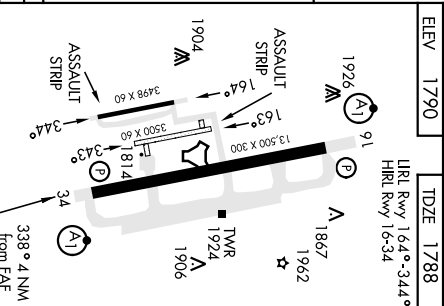


EMERG SAFE ALT 100 NM 4600

4000  
DYS R-349  
BIOMET DYS (L3)  
VGS1 and descent angles not coincident  
(VGS1 Angle 2.50/TCH 53)



CATEGORY	A	B	C	D	E
5-34 *	2280/24 492 (500-1/2)		2280/50 492 (500-1)		
** CIRCLING	2300-1 510 (600-1) 2320-1 530 (600-1)	2460-1 1/4 670 (700-1 1/2)	2460-2 670 (700-2)	2460-2 1/4 670 (700-2)	2460-2 1/2 670 (700-2 1/2)



ELEV 1790	TDZE 1788
-----------	-----------

FAF to MAP 3.5 NM	
Knots	Min:Sec
60	3:30
90	2:20
120	1:45
150	1:24
180	1:10

ABILENE, TEXAS  
Amth 3 10NOV16

32°25'N-99°51'W

# TACAN W RWY 34

DYESS AFB (KDYS)



VOR/DME TQA <b>111.6</b> Chn 53	APCH CRS <b>160°</b>	Rwy Idg TDZE Elev <b>1790</b> 1790
---------------------------------------	-------------------------	--

AL-2 [USAF]

DYESS AFB (KDYS)

\* When ALS Inop, increase CAT AB RVR to 55 and vis to 1 mile,  
CAT CDE vis to 1/2 miles.  
\*\* Circling to other than Rwy 34 NA.

ALSF-1  
 A1

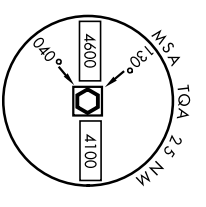
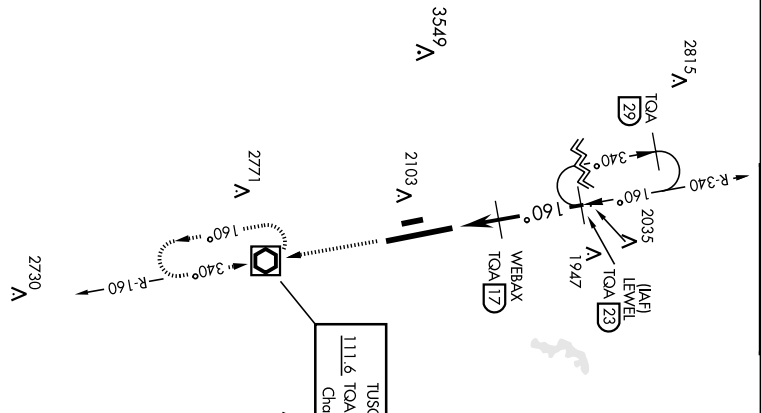
MISSED APPROACH: Climb and maintain  
4000 proceed direct TQA and hold.

ATIS * <b>269.175</b>	ABILENE APP CON <b>125.0 338.3</b> EAST <b>127.2 282.3</b> WEST
--------------------------	---

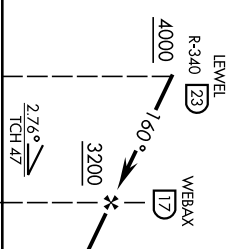
DYESS TOWER <b>133.0 257.675</b>
-------------------------------------

GND CON <b>118.35 275.8</b>
--------------------------------

ASR
-----



EMERG SAFE ALT 100 NM 4600

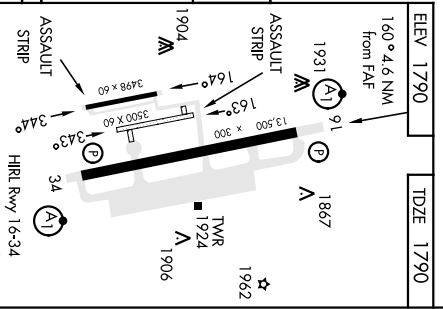


CATEGORY	A	B	C	D	E
----------	---	---	---	---	---

S-16 *	2300/24	510 (600-1/2)	2300/55	510 (600-1)
--------	---------	---------------	---------	-------------


CIRCLING **	2300-1	2320-1	2460-1 3/4	2460-2	2460-2 1/4
	510 (600-1)	530 (600-1)	670 (700-1 3/4)	670 (700-2)	670 (700-2 1/4)

FAF to MAP 4.1 NM	Knots	60	90	120	150	180
	Mins:Sec	4:06	2:44	2:03	1:38	1:22

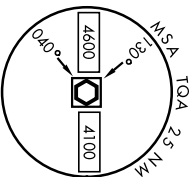
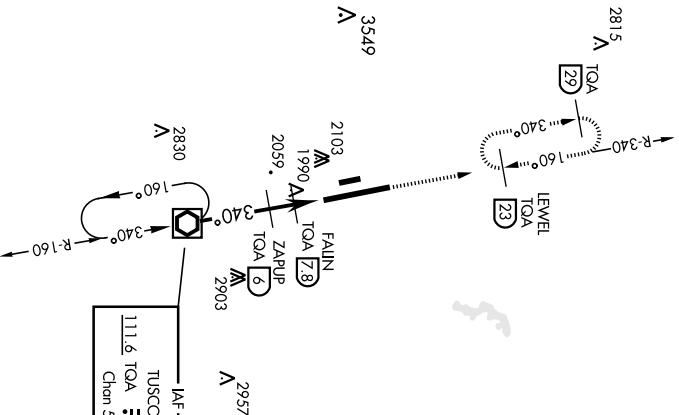


# VOR/DME RWY 34

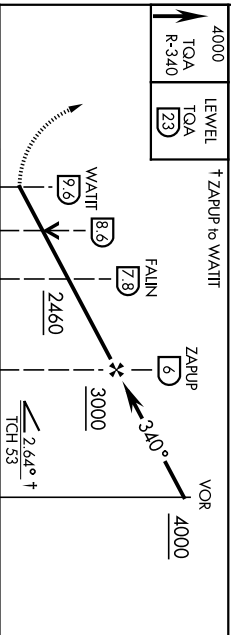
ABILENE, TEXAS

VOR/DME TOA <b>111.6</b> Chan <b>53</b>	APCH CRS <b>340°</b>	Rwy Idg <b>1788</b> TDZE Apt/Elev <b>1790</b>	AL-2 [USAF]	ALSF-1 	MISSED APPROACH: Climb to 4000 via TOA VOR/DME R-340 to LEWEL and hold.	DYESS AFB (KDYS)
ATIS * <b>269.175</b>	ABILENE APP CON <b>125.0 338.3</b> EAST <b>127.2 282.3</b> WEST	DYESS TOWER <b>133.0 257.675</b>	GND CON <b>118.35 275.8</b>	ASR		

\*\* When ALS Inop, increase CAT AB RVR to 55 and vis to 1 mile, CAT CDE  
RVR vis to 1 1/2 miles.  
\*\* Circling to other than Rwy 16 N/A

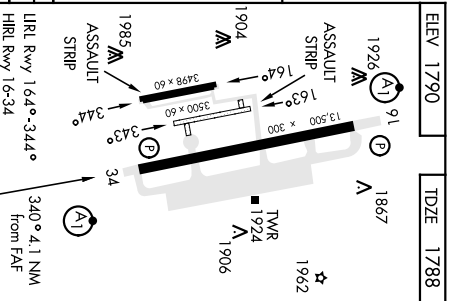


EMERG SAFE ALT 100 NM 4600



CATEGORY	A	B	C	D	E
----------	---	---	---	---	---

S-34 *	2260/24	472 (500-1/2)	2260/50	472 (500-1)	
** CIRCLING	2300-1 510 (600-1)	2320-1 530 (600-1)	2460-1 3/4 670 (700-1 3/4)	2460-2 670 (700-2)	2460-2 1/2 670 (700-2 1/2)



ELEV 1790	TDZE 1788
-----------	-----------

ILRL Rwy 164°-344°  
HRL Rwy 16-34  
FAF to MAP 3.6 NM  
340° 4.1 NM from FAF

Knots	60	90	120	150	180
Min:Sec	3:36	2:24	1:48	1:26	1:12

ABILENE, TEXAS

Amhd 3 10NOV16

32°25' -99°51'W

DYESS AFB (KDYS)

# VOR/DME RWY 34