

LOC/DME I-DXR 111.55 Chan 52 (Y)	APP CRS 087°	Rwy Idg TDZE 457 Apt Elev 457	4054
--	------------------------	---	-------------

LOC RWY 8

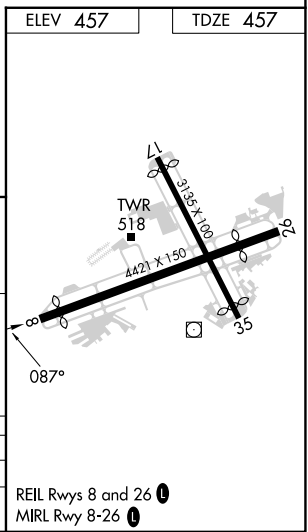
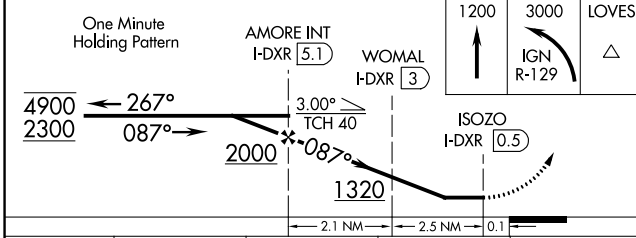
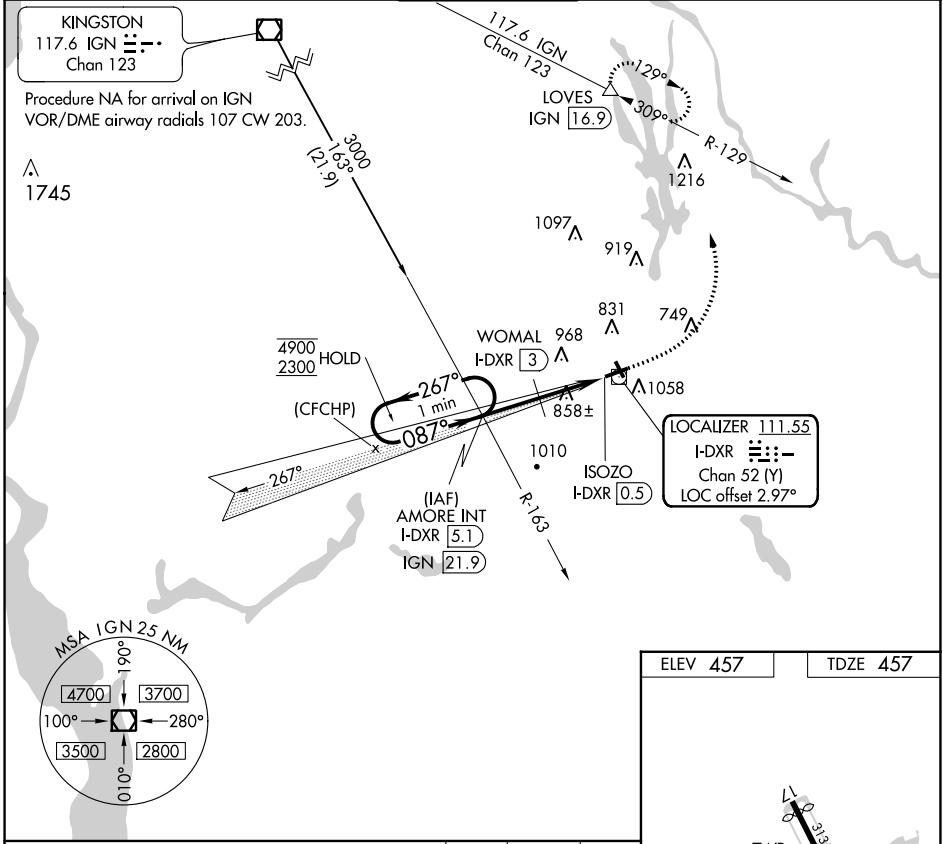
DANBURY MUNI (DXR)

DME required.

⚠ MISSED APPROACH: Climb to 1200 then climbing left turn to 3000 on IGN VOR/DME R-129 to LOVES/IGN 16.9 DME and hold.

⚠ Rwy 8 helicopter visibility reduction below 1 SM NA. Circling NA S of Rwy 8-26. Circling Rwy 17, 26, and 35 NA at night.

ATIS 127.75	HPN ASOS 133.8	NEW YORK APP CON 126.4 257.65	DANBURY TOWER * 119.4 (CTAF)	GND CON 121.6	CLNC DEL 128.6 (When twr closed)	UNICOM 122.95
-----------------------	--------------------------	---	--	-------------------------	---	-------------------------



CATEGORY	A	B	C	D
S-8	1100-1	643 (700-1)	1100-1 $\frac{7}{8}$	643 (700-1 $\frac{7}{8}$)
C CIRCLING	1140-1 683 (700-1)	1280-1 $\frac{1}{4}$ 823 (900-1 $\frac{1}{4}$)	1300-2 $\frac{1}{2}$ 843 (900-2 $\frac{1}{2}$)	1540-3 1083 (1100-3)

REIL Rwy 8 and 26
MIRL Rwy 8-26

NE-1, 22 FEB 2024 to 21 MAR 2024

NE-1, 22 FEB 2024 to 21 MAR 2024

WAAS CH 93275 W26A	APP CRS 259°	Rwy Idg TDZE 456 Apt Elev 457	3687 456 457
--	------------------------	---	---

RNAV (GPS) RWY 26

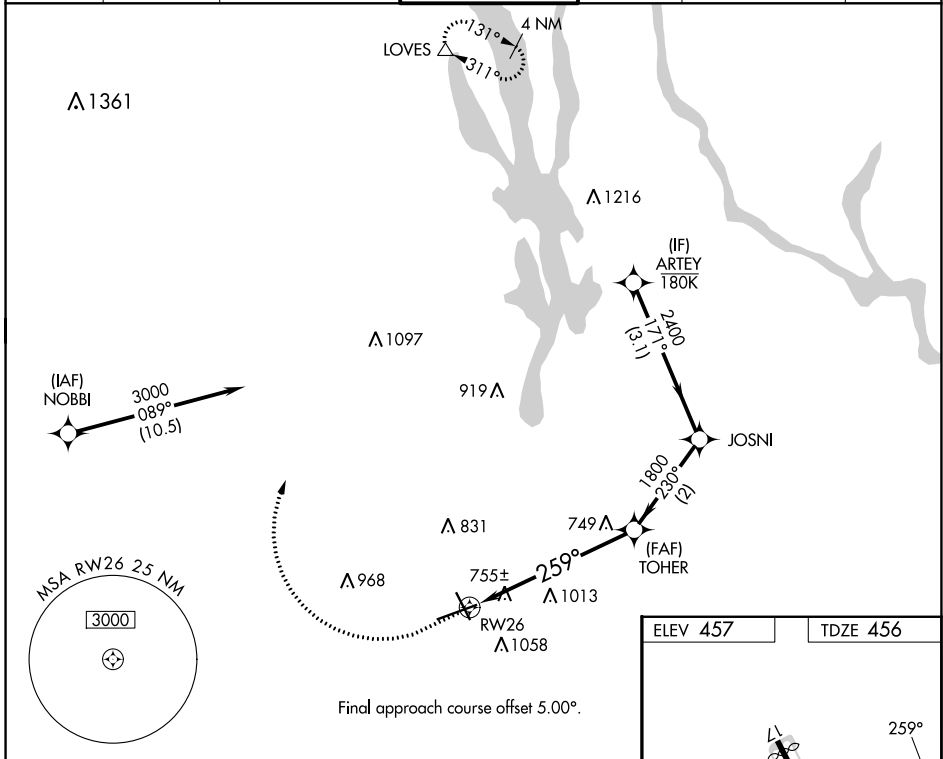
DANBURY MUNI (D.X.R.)

RNP APCH - GPS.

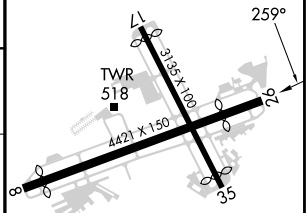
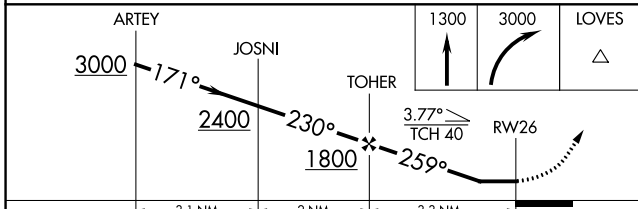
⚠ When local altimeter setting not received, use White Plains altimeter setting and increase all MDAs 60 feet and LNAV visibility Cat A ¼ SM and LP visibility Cat C ½ SM and Circling visibility Cat C ¼ SM. Procedure NA at night. Helicopter visibility reduction below 1 SM NA. Circling NA south of Rwy 8-26.

MISSED APPROACH: Climb to 3000 then climbing right turn to 3000 direct LOVES and hold.

ATIS 127.75	HPN ASOS 133.8	NEW YORK APP CON 126.4 257.65	DANBURY TOWER * 119.4 (CTAF)	GND CON 121.6	CLNC DEL 128.6 (When twr closed)	UNICOM 122.95
-----------------------	--------------------------	---	--	-------------------------	---	-------------------------



ELEV 457	TDZE 456
----------	----------



	3.1 NM		2 NM		3.3 NM		
CATEGORY	A	B	C	D			
LP MDA	1020-1	564 (600-1)	1020-1½ 564 (600-1½)	NA			
LNAV MDA	1280-1 824 (900-1)	1280-1¼ 824 (900-1¼)	1280-2½ 824 (900-2½)	NA			
CIRCLING	1280-1¼	823 (900-1¼)	1300-2½ 843 (900-2½)	NA			

REIL Rwy 8 and 26	MIRL Rwy 8-26
-------------------	---------------

NE-1, 22 FEB 2024 to 21 MAR 2024

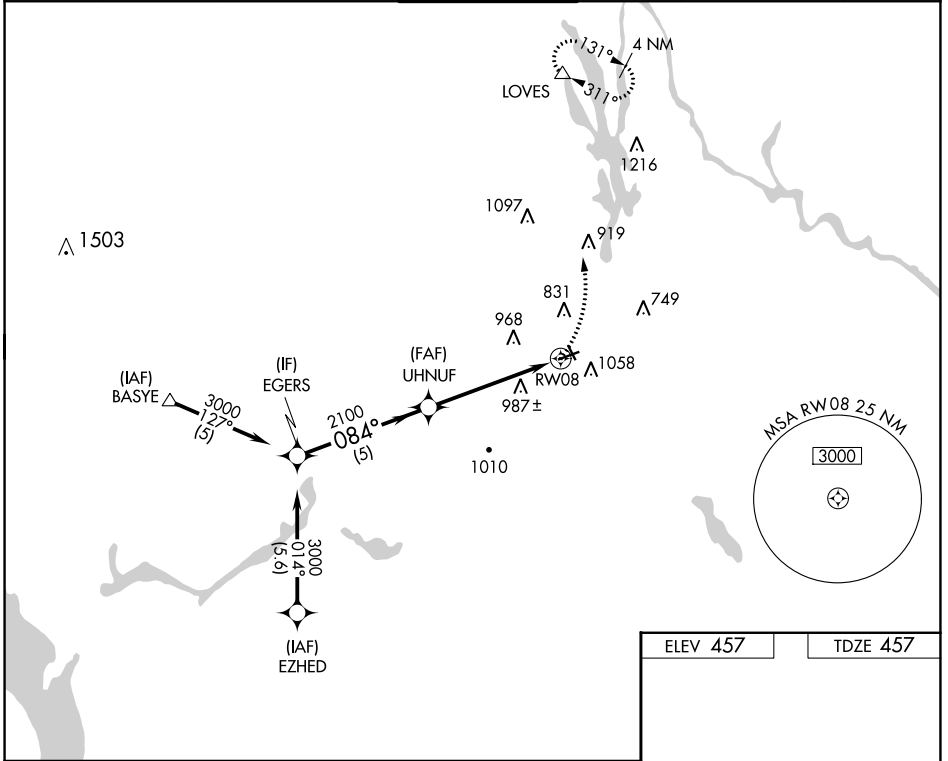
NE-1, 22 FEB 2024 to 21 MAR 2024

WAAS CH 99736 W08A	APP CRS 084°	Rwy Idg TDZE Apt Elev	4054 457 457
--	------------------------	-----------------------------	---

RNAV (GPS) RWY 8

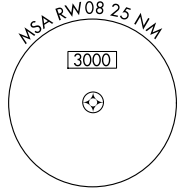
DANBURY MUNI (DXR)

RNP APCH.				MISSED APPROACH: Climbing left turn to 3000 direct LOVES and hold.			
<p>▼ Circling to Rwy 17, 26 and 35 NA at night. Circling NA S of Rwy 8-26. ▲ Rwy 8 helicopter visibility reduction below 1 SM NA.</p>							
ATIS 127.75	HPN ASOS 133.8	NEW YORK APP CON 126.4 257.65	DANBURY TOWER* 119.4 (CTAF)	GND CON 121.6	CLNC DEL 128.6 (When twr closed)	UNICOM 122.95	



NE-1, 22 FEB 2024 to 21 MAR 2024

NE-1, 22 FEB 2024 to 21 MAR 2024



ELEV 457	TDZE 457
----------	----------

CATEGORY	A	B	C	D
LP MDA	1180-1	723 (800-1)	1180-2	723 (800-2)
LNAV MDA	1240-1 783 (800-1)	1240-1¼ 783 (800-1¼)	1240-2½	783 (800-2½)
C CIRCLING	1240-1 783 (800-1)	1280-1¼ 823 (900-1¼)	1300-2½ 843 (900-2½)	1540-3 1083 (1100-3)

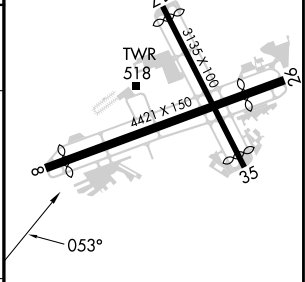
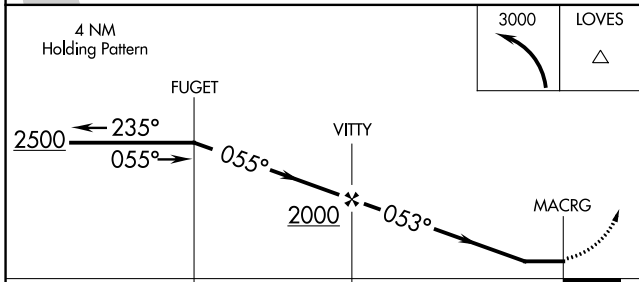
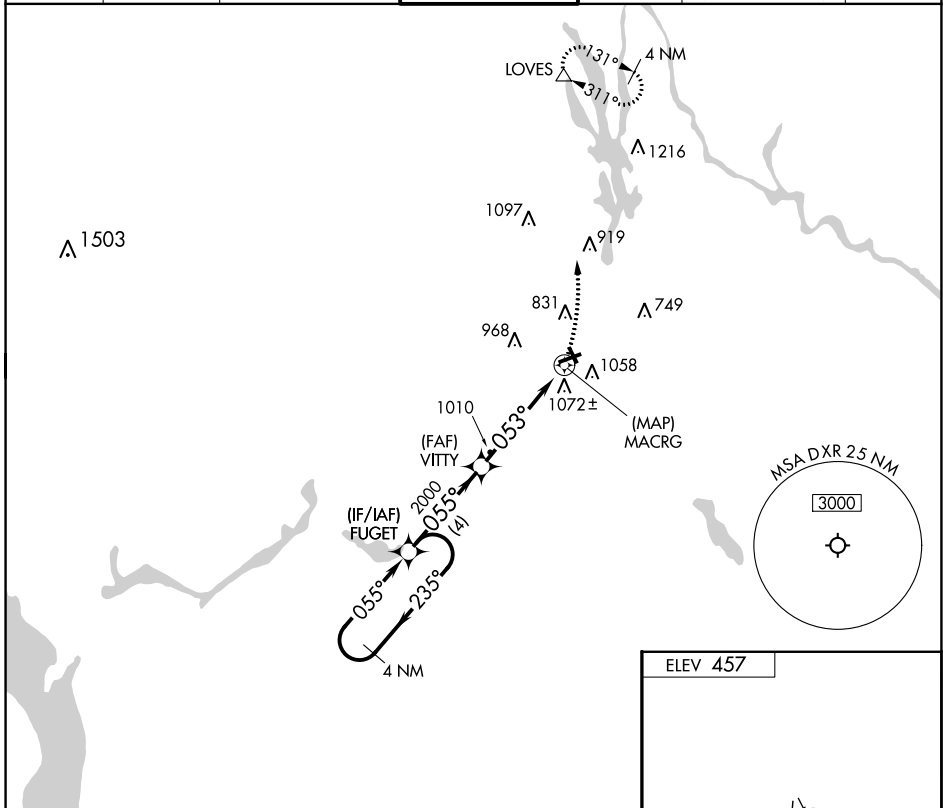
REIL Rwys 8 and 26
MIRL Rwy 8-26

APP CRS 053°	Rwy Idg TDZE Apt Elev	NA NA 457
------------------------	-----------------------------	--------------------------------------

RNAV (GPS)-A

DANBURY MUNI (D.X.R.)

RNP APCH.				MISSED APPROACH: Climbing left turn to 3000 direct LOVES and hold.		
<p>▼ Circling NA south of Rwy 8-26. Helicopter visibility reduction below 1 SM NA. ▲ Circling Rwy 17, 26, and 35 NA at night.</p>						
ATIS 127.75	HPN ASOS 133.8	NEW YORK APP CON 126.4 257.65	DANBURY TOWER * 119.4 0 (CTAF)	GND CON 121.6	CLNC DEL 128.6 (When twr closed)	UNICOM 122.95



CATEGORY	A	B	C	D	REIL Rws 8 and 26 MIRL Rwy 8-26
C CIRCLING	1340-1¼	883 (900-1¼)	1340-2¾ 883 (900-2¾)	1540-3 1083 (1100-3)	0

NE-1, 22 FEB 2024 to 21 MAR 2024

NE-1, 22 FEB 2024 to 21 MAR 2024

WAAS CH 98652 W08B	APP CRS 084°	Rwy Idg TDZE Apt Elev	4054 457 457
--	------------------------	-----------------------------	---

RNAV (GPS) Z RWY 8

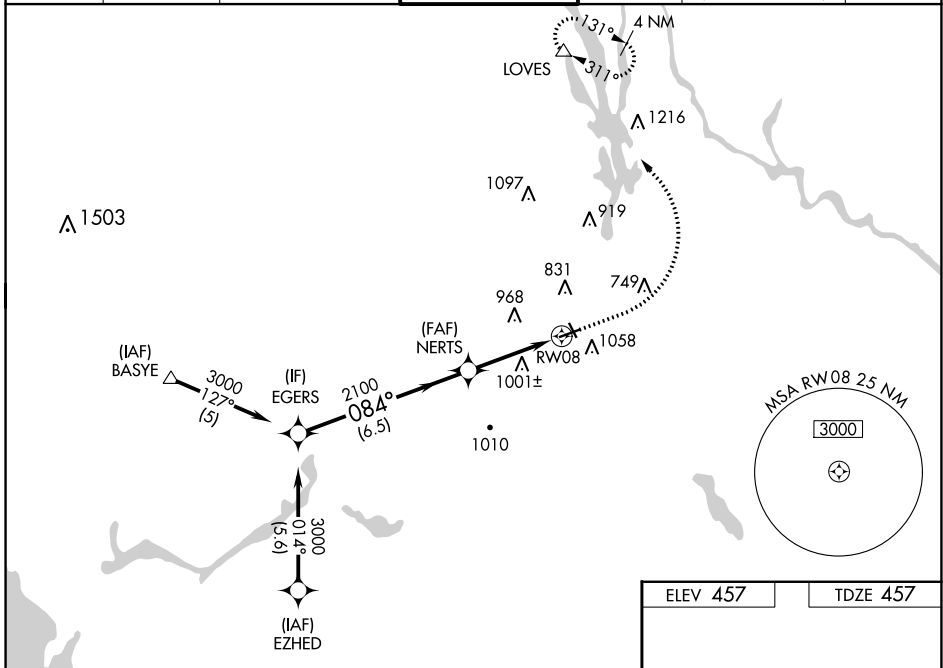
DANBURY MUNI (D.X.R)

RNP APCH - GPS.

- When local altimeter setting not received, use White Plains altimeter setting and increase LPV DA to 1090 feet and all visibilities $\frac{1}{8}$ SM. Increase LNAV/VNAV DA to 1412 feet and all visibilities $\frac{1}{2}$ SM.
- Increase all MDAs 60 feet; and Circling visibility Cat A $\frac{1}{4}$ SM. For uncompensated Baro-VNAV systems, LNAV/VNAV NA below -15°C or above 46°C. Baro-VNAV NA when using White Plains altimeter setting. Helicopter visibility reduction below 1 SM NA. Circling NA south of Rwy 8-26. Circling Rwy 26, 17 NA at night.

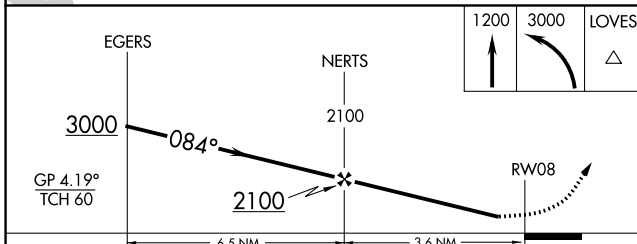
MISSED APPROACH:
Climb to 1200 then climbing left turn to 3000 direct LOVES and hold.

ATIS 127.75	HPN ASOS 133.8	NEW YORK APP CON 126.4 257.65	DANBURY TOWER* 119.4 (CTAF)	GND CON 121.6	CLNC DEL 128.6 (When twr closed)	UNICOM 122.95
-----------------------	--------------------------	---	---------------------------------------	-------------------------	---	-------------------------



NE-1, 22 FEB 2024 to 21 MAR 2024

NE-1, 22 FEB 2024 to 21 MAR 2024



CATEGORY	A	B	C	D
LPV DA	1030-1 $\frac{5}{8}$	573 (600-1 $\frac{5}{8}$)		NA
LNAV/VNAV DA	1352-2 $\frac{1}{2}$	895 (900-2 $\frac{1}{2}$)		NA
LNAV MDA	1240-1 783 (800-1)	1280-1 $\frac{1}{4}$ 823 (900-1 $\frac{1}{4}$)		NA
CIRCLING	1240-1 783 (800-1)	1280-1 $\frac{1}{4}$ 823 (900-1 $\frac{1}{4}$)		NA

ELEV 457	TDZE 457
----------	----------

REIL Rwy 8 and 26
MIRL Rwy 8-26