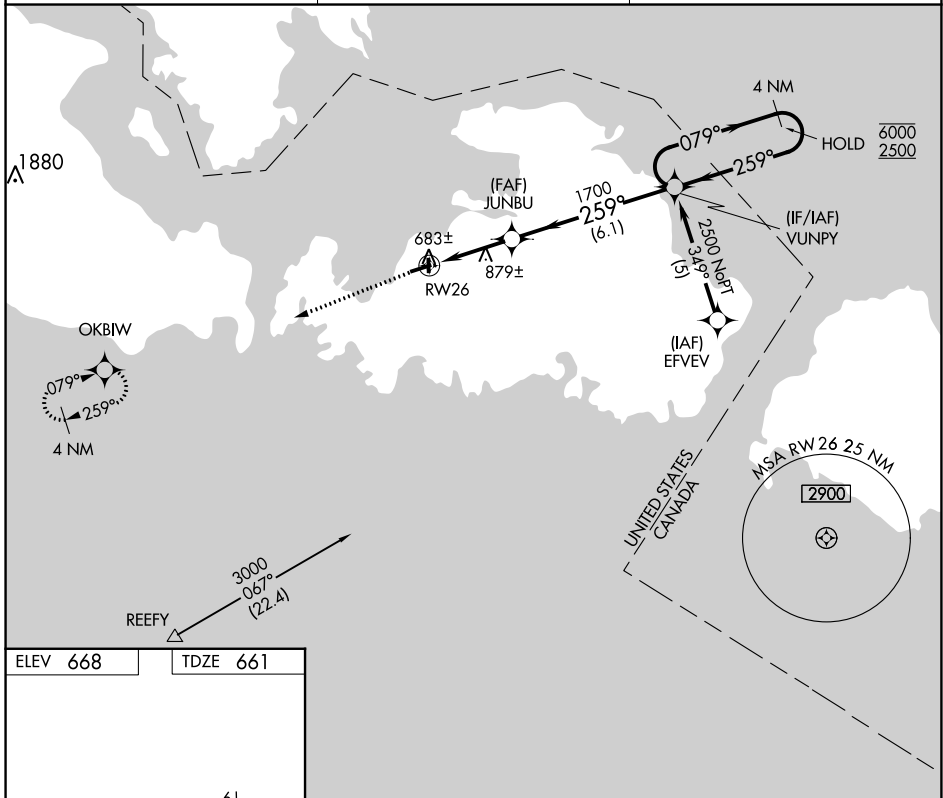


APP CRS <b>259°</b>	Rwy Idg TDZE Apt Elev	<b>3830</b> <b>661</b> <b>668</b>
------------------------	-----------------------------	---

# RNAV (GPS) RWY 26

DRUMMOND ISLAND (DRM)

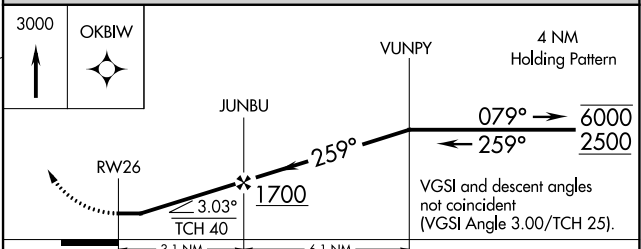
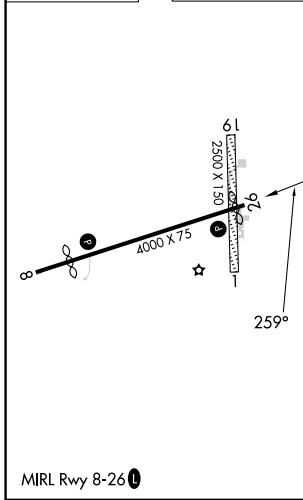
RNP APCH.		MISSED APPROACH: Climb to 3000 direct OKBIW and hold.
<p>▼ Rwy 26 helicopter visibility reduction below 1 SM NA. Procedure NA at night. Circling to Rwy 1-19 NA.</p>		
AWOS-3 <b>118.325</b>	TORONTO CENTER <b>132.65 344.5</b>	UNICOM <b>122.8 (CTAF)</b>



EC-1, 22 FEB 2024 to 21 MAR 2024

EC-1, 22 FEB 2024 to 21 MAR 2024

ELEV 668	TDZE 661
----------	----------



	3.1 NM		6.1 NM	
CATEGORY	A	B	C	D
LNAV MDA	1180-1	519 (600-1)	1180-1½ 519 (600-1½)	NA
CIRCLING	1180-1	512 (600-1)	1240-1½ 572 (600-1½)	NA

APP CRS <b>079°</b>	Rwy Idg TDZE Apt Elev	<b>3350</b> <b>661</b> <b>668</b>
------------------------	-----------------------------	---

# RNAV (GPS) RWY 8

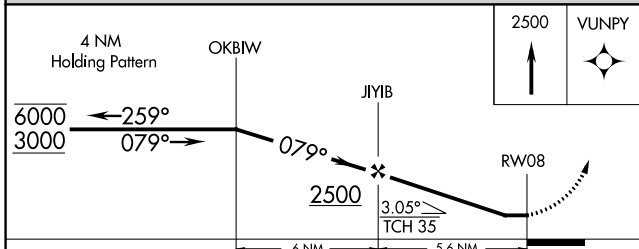
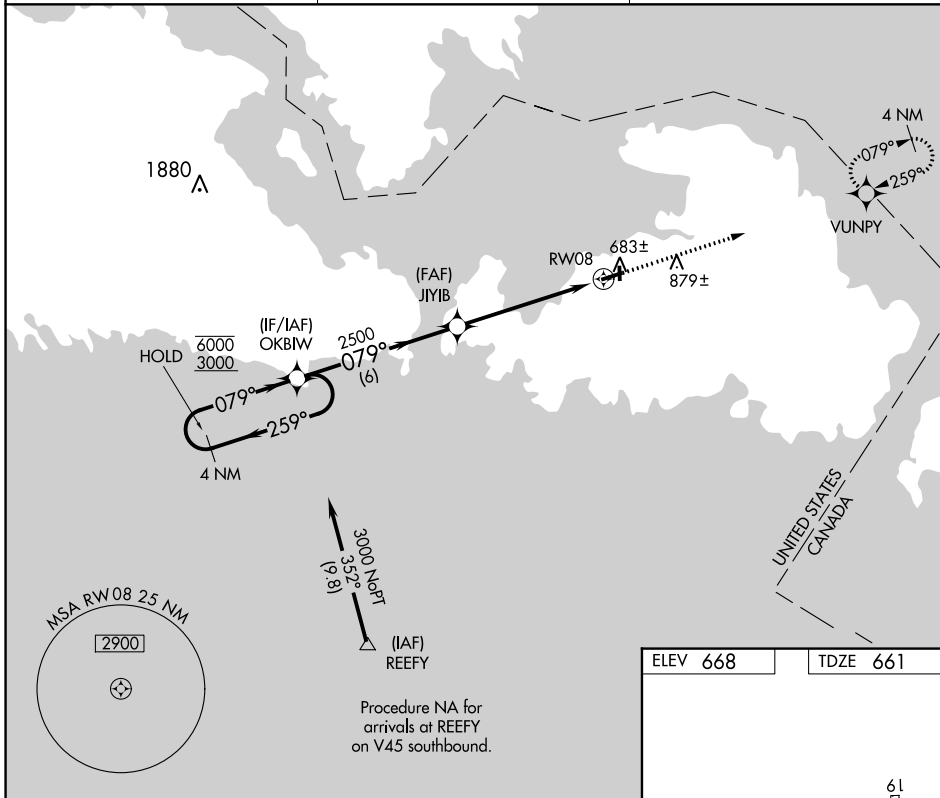
DRUMMOND ISLAND (DRM)

RNP APCH.

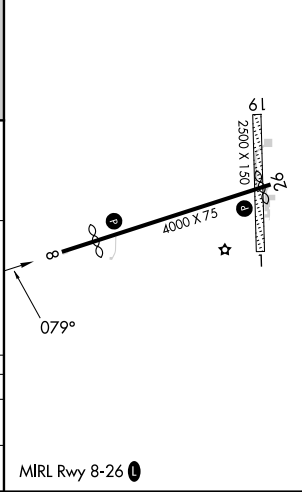
**▼** Rwy 8 helicopter visibility reduction below 1 SM NA.  
Procedure NA at night. Circling to Rwy 1-19 NA.

MISSED APPROACH: Climb to 2500 direct VUNPY and hold.

AWOS-3 <b>118.325</b>	TORONTO CENTER <b>132.65 344.5</b>	UNICOM <b>122.8 (CTAF) 0</b>
--------------------------	---------------------------------------	---------------------------------



ELEV 668	TDZE 661
----------	----------



CATEGORY	A	B	C	D
RNAV MDA	1120-1	459 (500-1)	1120-1½ 459 (500-1½)	NA
CIRCLING	1160-1	492 (500-1)	1240-1½ 572 (600-1½)	NA

EC-1, 22 FEB 2024 to 21 MAR 2024

EC-1, 22 FEB 2024 to 21 MAR 2024