

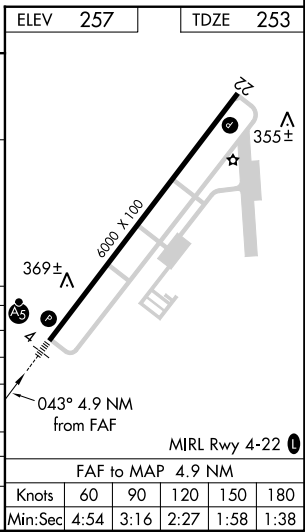
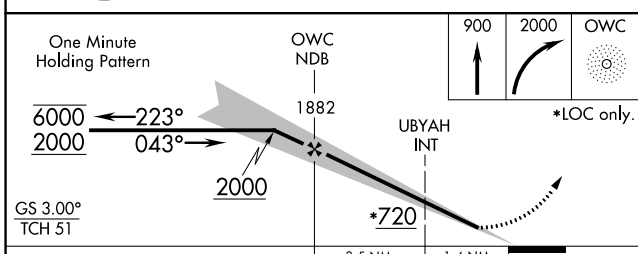
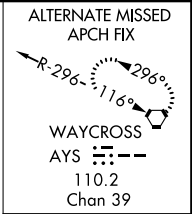
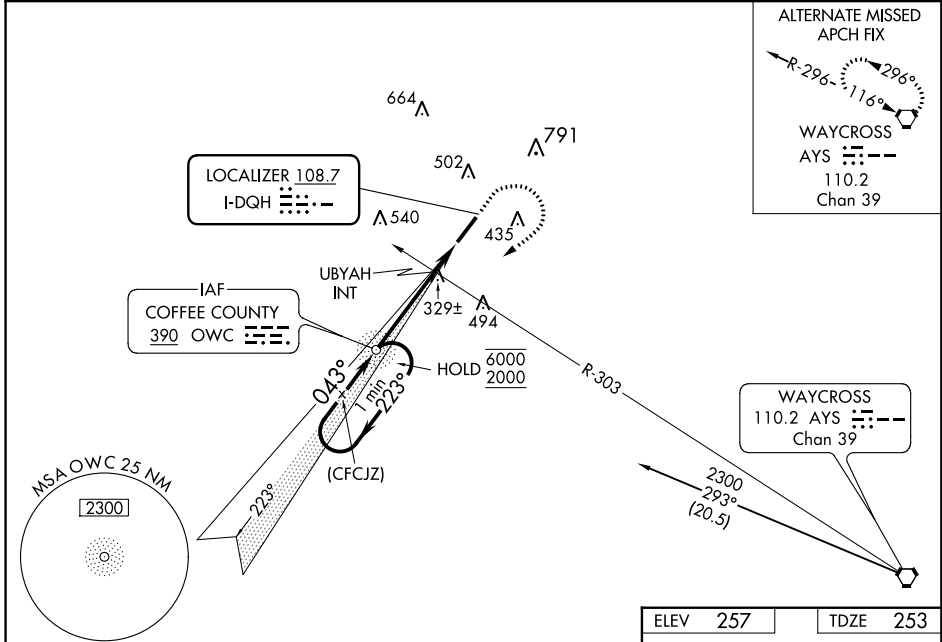
LOC I-DQH <b>108.7</b>	APP CRS <b>043°</b>	Rwy Idg TDZE Apt Elev	<b>6000</b> <b>253</b> <b>257</b>
---------------------------	------------------------	-----------------------------	---

# ILS or LOC RWY 4

DOUGLAS MUNI (DQH)

ADF required.	MALSRS 	MISSED APPROACH: Climb to 900 then climbing right turn to 2000 direct OWC NDB and hold.
 For inop MALSRS, increase S-LOC 4 Cat C and D visibility to 1 3/8 mile.		

AWOS-3 <b>119.075</b>	JACKSONVILLE CENTER <b>127.575 269.025</b>	GCO <b>121.725</b>	UNICOM <b>122.8 (CTAF) 0</b>
--------------------------	---	-----------------------	---------------------------------



CATEGORY	A	B	C	D
S-ILS 4	453-1/2 200 (200-1/2)			
S-LOC 4	720-1/2	467 (500-1/2)	720-1	467 (500-1)
CIRCLING	720-1 463 (500-1)	820-1 563 (600-1)	960-2 703 (800-2)	1160-3 903 (1000-3)
UBIAH FIX MINIMUMS (DUAL VOR RECEIVERS REQUIRED)				
S-LOC 4	580-1/2 327 (400-1/2)			
CIRCLING	720-1 463 (500-1)	820-1 563 (600-1)	960-2 703 (800-2)	1160-3 903 (1000-3)

SE-4, 16 AUG 2018 to 13 SEP 2018

SE-4, 16 AUG 2018 to 13 SEP 2018

FAF to MAP 4.9 NM	Knots	60	90	120	150	180
	Min:Sec	4:54	3:16	2:27	1:58	1:38

WAAS CH <b>86725</b> <b>W22A</b>	APP CRS <b>223°</b>	Rwy Idg TDZE Apt Elev	<b>6000</b> <b>257</b> <b>257</b>
--	------------------------	-----------------------------	---

# RNAV (GPS) RWY 22

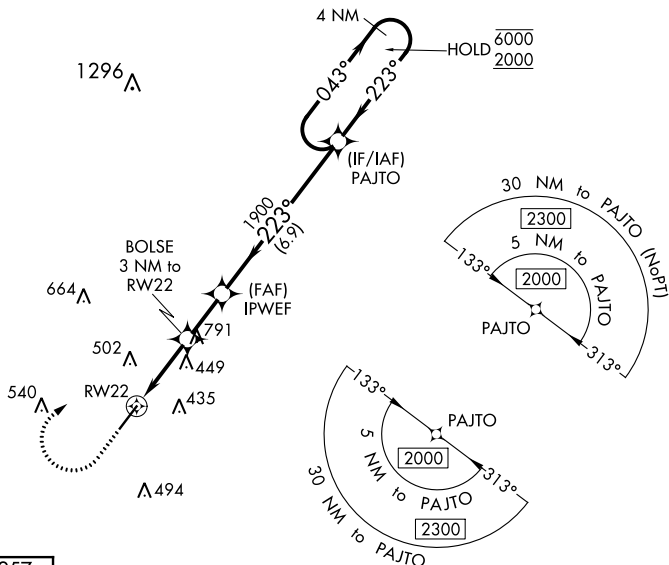
DOUGLAS MUNI (DQH)

RNP APCH.

**⚠** For uncompensated Baro-VNAV systems, LNAV/VNAV NA below -15°C or above 54°C.

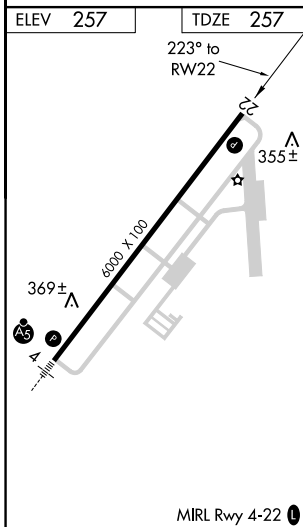
**⚠** MISSED APPROACH: Climb to 1200 then climbing right turn to 2000 direct PAJTO and hold.

AWOS-3 <b>119.075</b>	JACKSONVILLE CENTER <b>127.575 269.025</b>	GCO <b>121.725</b>	UNICOM <b>122.8 (CTAF) 0</b>
--------------------------	---	-----------------------	---------------------------------



SE-4, 16 AUG 2018 to 13 SEP 2018

SE-4, 16 AUG 2018 to 13 SEP 2018



ELEV 257	TDZE 257	1200 2000 PAJTO		VGSI and RNAV glidepath not coincident (VGSI Angle 2.50/TCH 26).	4 NM Holding Pattern
		<p>*LNAV only.</p> <p>BOLSE 3 NM to RWY 22</p> <p>*1.8 NM to RWY 22</p> <p>*1240</p> <p>IPWEF 1900</p> <p>PAJTO</p> <p>GP 3.00° TCH 40</p>		<p>1.8 NM</p> <p>1.2 NM</p> <p>2 NM</p> <p>6.9 NM</p>	
CATEGORY	A	B	C	D	
LPV DA		507- <sup>3</sup> / <sub>4</sub>	250 (300- <sup>3</sup> / <sub>4</sub> )		
LNAV/VNAV DA		567- <sup>7</sup> / <sub>8</sub>	310 (400- <sup>7</sup> / <sub>8</sub> )		
LNAV MDA	760-1	503 (600-1)	760-1 <sup>3</sup> / <sub>8</sub>	503 (600-1 <sup>3</sup> / <sub>8</sub> )	
<b>C</b> CIRCLING	760-1 503 (600-1)	820-1 563 (600-1)	960-2 703 (800-2)	1160-3 903 (1000-3)	

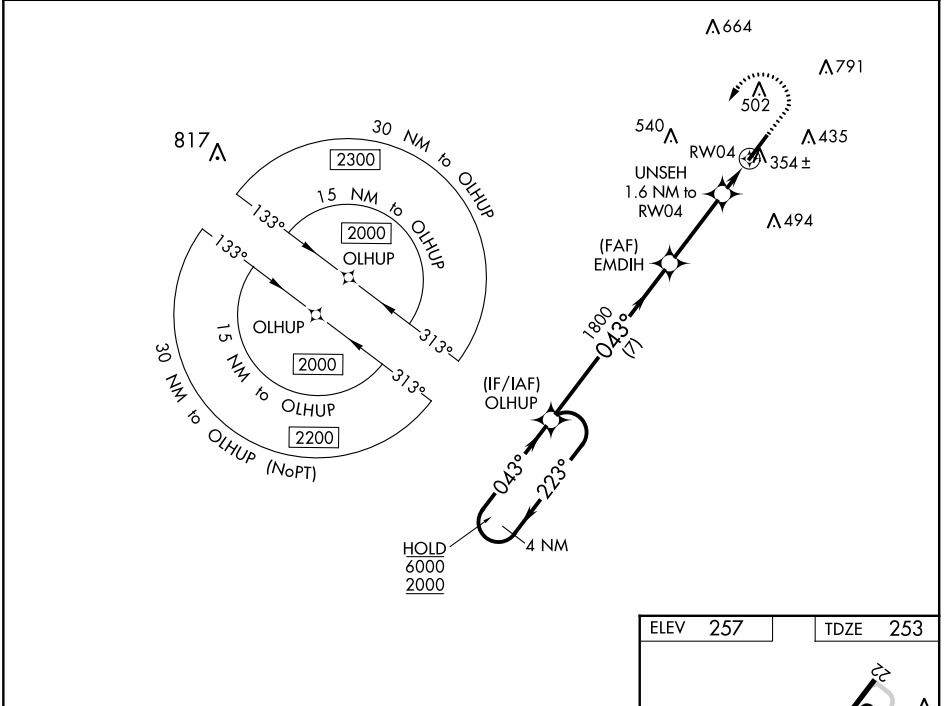
WAAS CH <b>93824</b> <b>W04A</b>	APP CRS <b>043°</b>	Rwy Idg TDZE Apt Elev	<b>6000</b> <b>253</b> <b>257</b>
--	------------------------	-----------------------------	---

# RNAV (GPS) RWY 4

DOUGLAS MUNI (DQH)

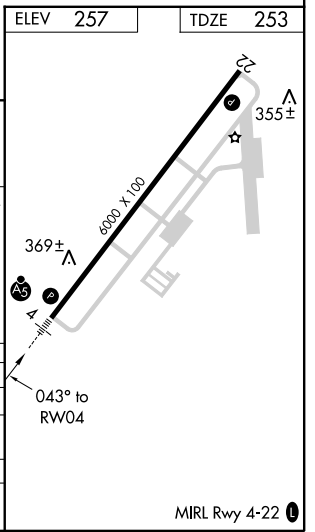
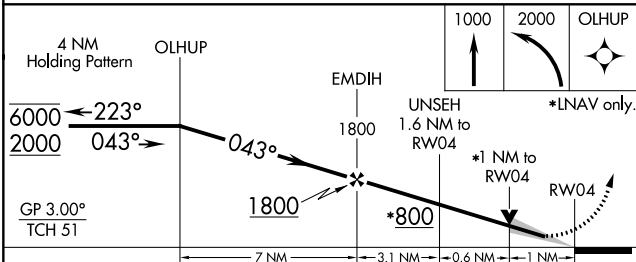
RNP APCH.	MALSR	MISSED APPROACH: Climb to 1000 then climbing left turn to 2000 direct OLHUP and hold.
<p>▼ For uncompensated Baro-VNAV systems, LNAV/VNAV NA below -15°C or above 54°C. For inop ALS increase LNAV/VNAV all Cats visibility to ½ SM and LNAV Cat C and D visibility to 1 SM.</p>		

AWOS-3 <b>119.075</b>	JACKSONVILLE CENTER <b>127.575 269.025</b>	GCO <b>121.725</b>	UNICOM <b>122.8 (CTAF)</b>
--------------------------	---	-----------------------	-------------------------------



SE-4, 16 AUG 2018 to 13 SEP 2018

SE-4, 16 AUG 2018 to 13 SEP 2018



CATEGORY	A	B	C	D
LPV DA		453-½	200 (200-½)	
LNAV/VNAV DA		538-½	285 (300-½)	
LNAV MDA	620-½	367 (400-½)	620-⅝	367 (400-⅝)
CIRCLING	720-1 463 (500-1)	820-1 563 (600-1)	960-2 703 (800-2)	1160-3 903 (1000-3)