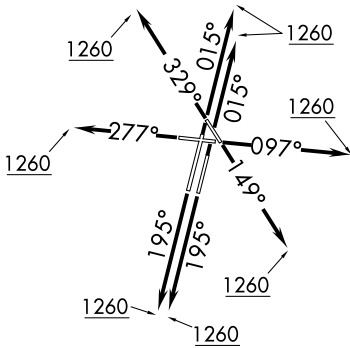


ADELL SIX DEPARTURE (RNAV)

**TOP ALTITUDE:
3000**

ATIS
132.075
GND CON
121.8
DUPAGE TOWER
120.9 257.8
CHICAGO DEP CON
133.5 349.0



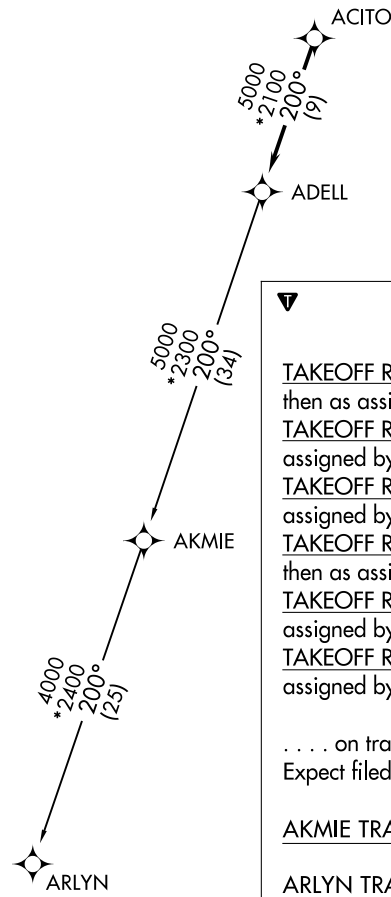
TAKEOFF MINIMUMS:

Rwys 2L/R, 10, 20L/R, 28, 33: Standard.
Rwy 15: 300-1 or standard with minimum
climb of 205' per NM to 1000.

- NOTE: RADAR required.
- NOTE: DME/DME/IRU or GPS required.
- NOTE: RNAV 1.
- NOTE: Turbojet departures maintain 250K until advised by ATC.
- NOTE: AKMIE Transition: For aircraft inbound to BMI, SPI, PIA, or as assigned by ATC.

EC-3, 22 FEB 2024 to 21 MAR 2024

EC-3, 22 FEB 2024 to 21 MAR 2024



DEPARTURE ROUTE DESCRIPTION

TAKEOFF RUNWAYS 2L/2R: Climb heading 015° to 1260, then as assigned by ATC, for vectors to ACITO. Thence . . .

TAKEOFF RUNWAY 10: Climb heading 097° to 1260, then as assigned by ATC, for vectors to ACITO. Thence . . .

TAKEOFF RUNWAY 15: Climb heading 149° to 1260, then as assigned by ATC, for vectors to ACITO. Thence . . .

TAKEOFF RUNWAYS 20L/20R: Climb heading 195° to 1260, then as assigned by ATC, for vectors to ACITO. Thence . . .

TAKEOFF RUNWAY 28: Climb heading 277° to 1260, then as assigned by ATC, for vectors to ACITO. Thence . . .

TAKEOFF RUNWAY 33: Climb heading 329° to 1260, then as assigned by ATC, for vectors to ACITO. Thence . . .

. . . on track 200° to ADELL, then on (transition). Maintain 3000. Expect filed altitude 10 minutes after departure.

AKMIE TRANSITION (ADELL6.AKMIE):

ARLYN TRANSITION (ADELL6.ARLYN):

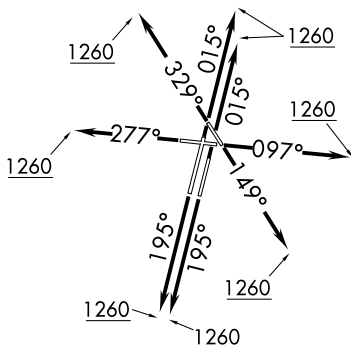
NOTE: Chart not to scale.

BLOKR SIX DEPARTURE (RNAV)

DUPAGE (DPA)
CHICAGO/WEST CHICAGO, ILLINOIS

ATIS
132.075
GND CON
121.8
DUPAGE TOWER
120.9 257.8
CHICAGO DEP CON
133.5 349.0

**TOP ALTITUDE:
3000**



TAKEOFF MINIMUMS:

Rwys 2L/R, 10, 20L/R, 28, 33: Standard.

Rwy 15: 300-1% or standard with minimum climb of 205' per NM to 1000.

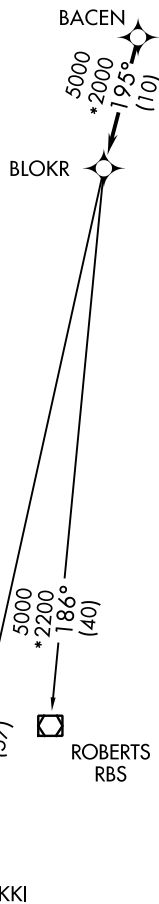
NOTE: RADAR required.

NOTE: DME/DME/IRU or GPS required.

NOTE: RNAV 1.

NOTE: Turbojet departures maintain 250K until advised by ATC.

NOTE: ROBERTS TRANSITION: For aircraft inbound to CMI or STL, or as assigned by ATC.



DEPARTURE ROUTE DESCRIPTION

TAKEOFF RUNWAYS 2L/2R: Climb heading 015° to 1260, then as assigned by ATC, for vectors to BACEN. Thence. . .

TAKEOFF RUNWAY 10: Climb heading 097° to 1260, then as assigned by ATC, for vectors to BACEN. Thence. . .

TAKEOFF RUNWAY 15: Climb heading 149° to 1260, then as assigned by ATC, for vectors to BACEN. Thence. . .

TAKEOFF RUNWAYS 20L/20R: Climb heading 195° to 1260, then as assigned by ATC, for vectors to BACEN. Thence. . .

TAKEOFF RUNWAY 28: Climb heading 277° to 1260, then as assigned by ATC, for vectors to BACEN. Thence. . .

TAKEOFF RUNWAY 33: Climb heading 329° to 1260, then as assigned by ATC, for vectors to BACEN. Thence. . .

. . . on track 195° to BLOKR, then on (transition). Maintain 3000.

Expect filed altitude 10 minutes after departure.

BEKKI TRANSITION (BLOKR6.BEKKI):

ROBERTS TRANSITION (BLOKR6.RBS):

NOTE: Chart not to scale.

NOTE: Chart not to scale.

NOTE: Chart not to scale.

BEKKI TRANSITION (BLOKR6.BEKKI):

ROBERTS TRANSITION (BLOKR6.RBS):

NOTE: Chart not to scale.

BLOKR SIX DEPARTURE (RNAV)

(BLOKR6.BLOKR) 10OCT19

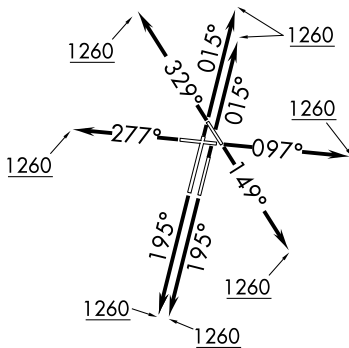
CHICAGO/WEST CHICAGO, ILLINOIS
DUPAGE (DPA)

EC-3, 22 FEB 2024 to 21 MAR 2024

EC-3, 22 FEB 2024 to 21 MAR 2024

TOP ALTITUDE:
3000

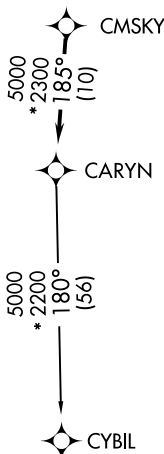
ATIS
132.075
GND CON
121.8
DUPAGE TOWER
120.9 257.8
CHICAGO DEP CON
133.5 349.0



NOTE: RADAR required.
 NOTE: DME/DME/IRU or GPS required.
 NOTE: RNAV 1.
 NOTE: Turbojet departures maintain 250K until advised by ATC.

TAKEOFF MINIMUMS:

Rwys 2L/R, 10, 20L/R, 28, 33: Standard.
 Rwy 15: 300-1 $\frac{3}{8}$ or standard with minimum climb of 205' per NM to 1000.



NOTE: Chart not to scale.

DEPARTURE ROUTE DESCRIPTION

TAKEOFF RUNWAYS 2L/2R: Climb heading 015° to 1260, then as assigned by ATC, for vectors to CMSKY. Thence....

TAKEOFF RUNWAY 10: Climb heading 097° to 1260, then as assigned by ATC, for vectors to CMSKY. Thence....

TAKEOFF RUNWAY 15: Climb heading 149° to 1260, then as assigned by ATC, for vectors to CMSKY. Thence....

TAKEOFF RUNWAYS 20L/20R: Climb heading 195° to 1260, then as assigned by ATC, for vectors to CMSKY. Thence....

TAKEOFF RUNWAY 28: Climb heading 277° to 1260, then as assigned by ATC, for vectors to CMSKY. Thence....

TAKEOFF RUNWAY 33: Climb heading 329° to 1260, then as assigned by ATC, for vectors to CMSKY. Thence....

....on track 185° to CARYN, then on (transition). Maintain 3000. Expect filed altitude 10 minutes after departure.

CYBIL TRANSITION (CARYN6.CYBIL):

(DARCY6.DARCY) 19283

AL-5104 (FAA)

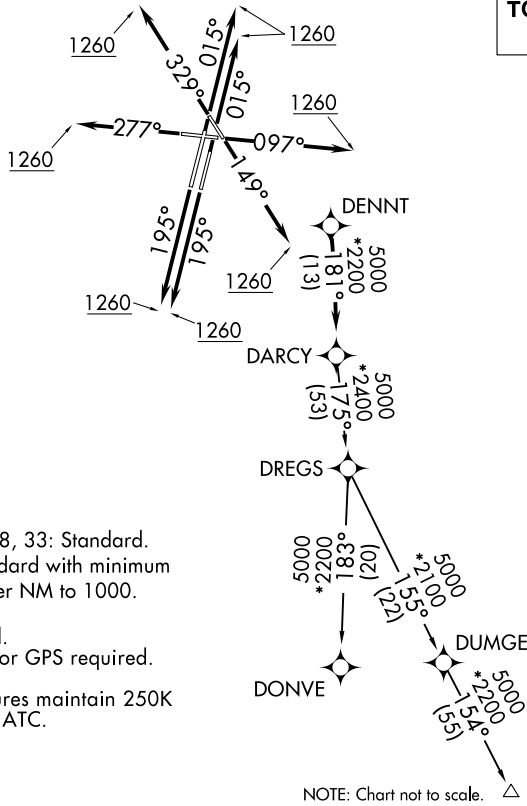
DUPAGE (DPA)

DARCY SIX DEPARTURE (RNAV)

CHICAGO/WEST CHICAGO, ILLINOIS

ATIS
 132.075
 GND CON
 121.8
 DUPAGE TOWER
 120.9 257.8
 CHICAGO DEP CON
 133.5 349.0

TOP ALTITUDE:
3000



TAKEOFF MINIMUMS:

Rwy 2L/R, 10, 20L/R, 28, 33: Standard.
 Rwy 15: 300-1 $\frac{3}{8}$ or standard with minimum
 climb of 205' per NM to 1000.

- NOTE: RADAR required.
- NOTE: DME/DME/IRU or GPS required.
- NOTE: RNAV 1.
- NOTE: Turbojet departures maintain 250K until advised by ATC.

NOTE: Chart not to scale. \triangle SCOTO

DEPARTURE ROUTE DESCRIPTION

- TAKEOFF RUNWAYS 2L/R:** Climb heading 015° to 1260, then as assigned by ATC, for vectors to DENNT. Thence
- TAKEOFF RUNWAY 10:** Climb heading 097° to 1260, then as assigned by ATC, for vectors to DENNT. Thence
- TAKEOFF RUNWAY 15:** Climb heading 149° to 1260, then as assigned by ATC, for vectors to DENNT. Thence
- TAKEOFF RUNWAYS 20L/R:** Climb heading 195° to 1260, then as assigned by ATC, for vectors to DENNT. Thence
- TAKEOFF RUNWAY 28:** Climb heading 277° to 1260, then as assigned by ATC, for vectors to DENNT. Thence
- TAKEOFF RUNWAY 33:** Climb heading 329° to 1260, then as assigned by ATC, for vectors to DENNT. Thence

. . . . on track 181° to DARCY, then on (transition). Maintain 3000.
 Expect filed altitude 10 minutes after departure.

- DONVE TRANSITION (DARCY6.DONVE):**
- SCOTO TRANSITION (DARCY6.SCOTO):**

DARCY SIX DEPARTURE (RNAV)

(DARCY6.DARCY) 10OCT19

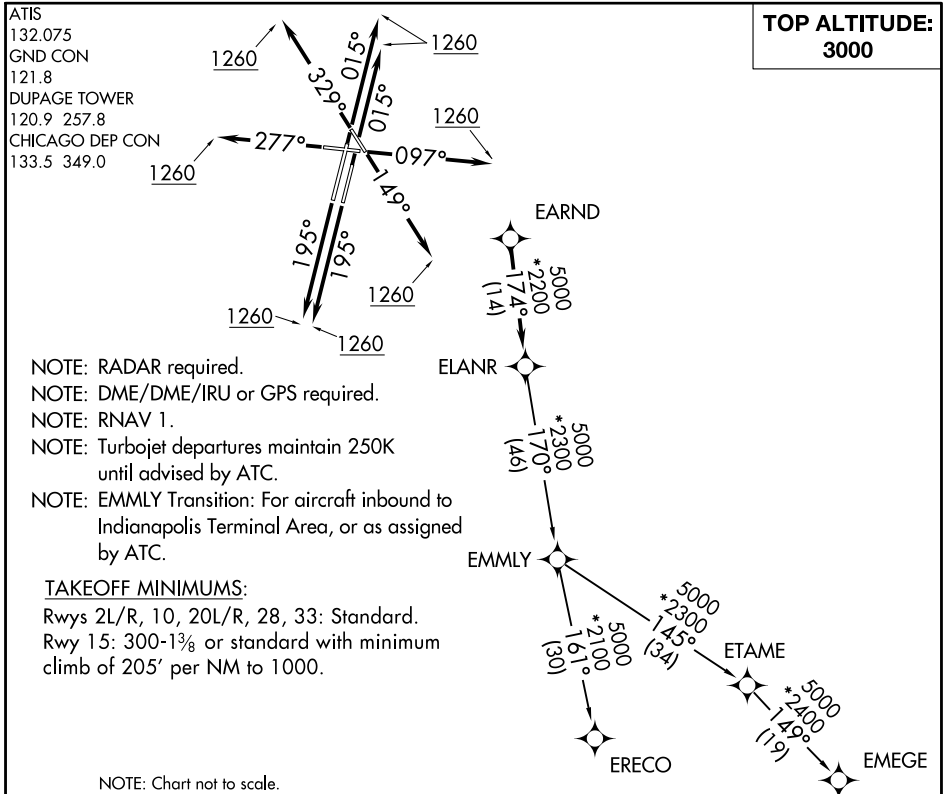
CHICAGO/WEST CHICAGO, ILLINOIS

DUPAGE (DPA)

EC-3, 22 FEB 2024 to 21 MAR 2024

EC-3, 22 FEB 2024 to 21 MAR 2024

ELANR SIX DEPARTURE (RNAV)



EC-3, 22 FEB 2024 to 21 MAR 2024

EC-3, 22 FEB 2024 to 21 MAR 2024

DEPARTURE ROUTE DESCRIPTION

- TAKEOFF RUNWAY 2L/R: Climb heading 015° to 1260, then as assigned by ATC, for vectors to EARND. Thence. . .
- TAKEOFF RUNWAY 10: Climb heading 097° to 1260, then as assigned by ATC, for vectors to EARND. Thence. . .
- TAKEOFF RUNWAY 15: Climb heading 149° to 1260, then as assigned by ATC, for vectors to EARND. Thence. . .
- TAKEOFF RUNWAY 20L/R: Climb heading 195° to 1260, then as assigned by ATC, for vectors to EARND. Thence. . .
- TAKEOFF RUNWAY 28: Climb heading 277° to 1260, then as assigned by ATC, for vectors to EARND. Thence. . .
- TAKEOFF RUNWAY 33: Climb heading 329° to 1260, then as assigned by ATC, for vectors to EARND. Thence. . .

. . . on track 174° to ELANR, then on (transition). Maintain 3000. Expect filed altitude 10 minutes after departure.

EMEGE TRANSITION (ELANR6.EMEGE):

EMMLY TRANSITION (ELANR6.EMMLY):

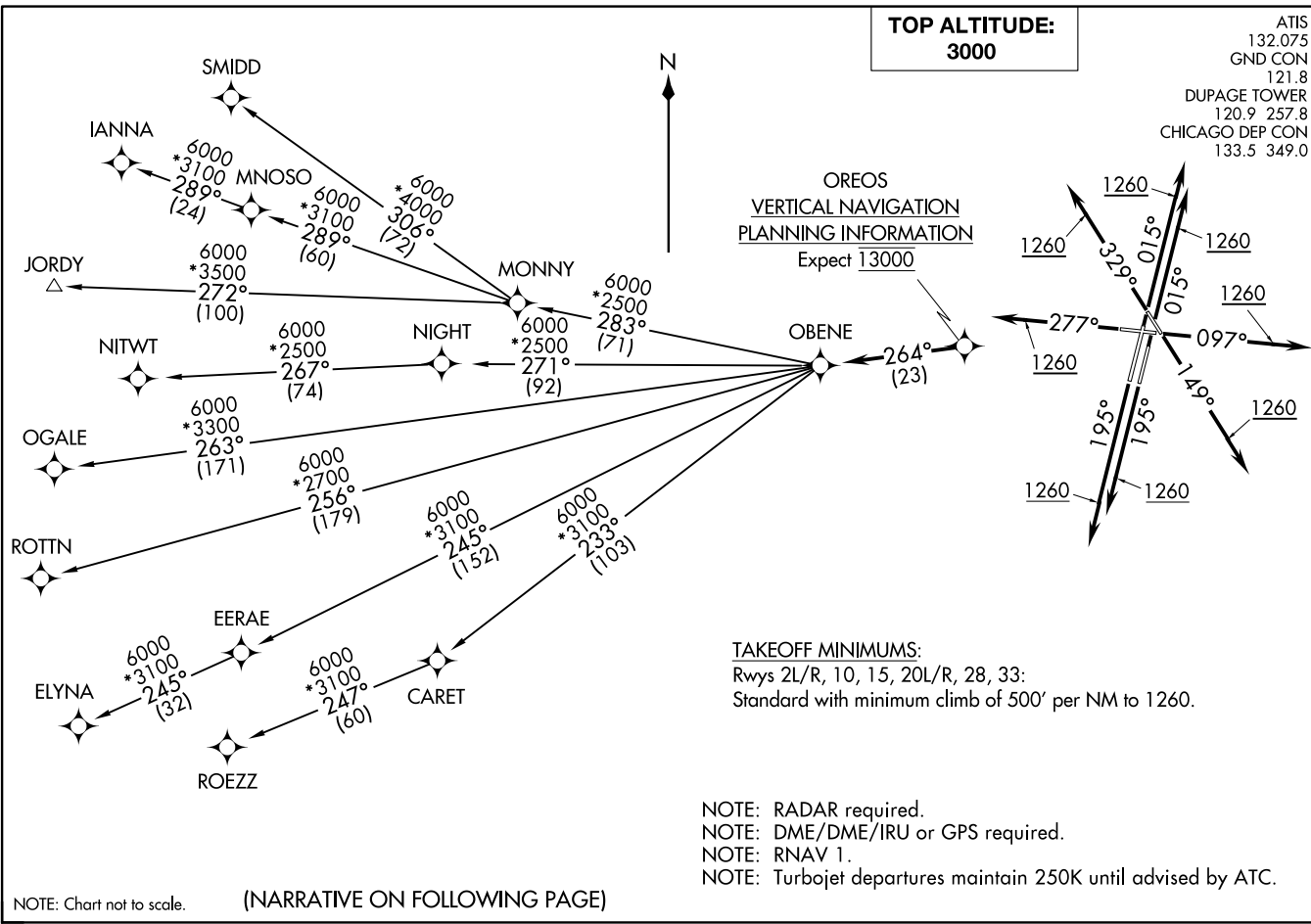
ERECO TRANSITION (ELANR6.ERECO):

ELANR SIX DEPARTURE (RNAV)

(ELANR6.ELANR) 10OCT19

OBENE THREE DEPARTURE (RNAV)
(OBENE3.OBENE) 08NOV18

CHICAGO/WEST CHICAGO, ILLINOIS
DUPAGE (DPA)



(NARRATIVE ON FOLLOWING PAGE)

NOTE: Chart not to scale.



DEPARTURE ROUTE DESCRIPTION

TAKEOFF RUNWAYS 2L/R: Climb heading 015° to 1260, then continue climb on 015° heading or as assigned by ATC, for vectors to OREOS. Thence

TAKEOFF RUNWAY 10: Climb heading 097° to 1260, then continue climb on 097° heading or as assigned by ATC, for vectors to OREOS. Thence

TAKEOFF RUNWAY 15: Climb heading 149° to 1260, then continue climb on 149° heading or as assigned by ATC, for vectors to OREOS. Thence

TAKEOFF RUNWAYS 20L/R: Climb heading 195° to 1260, then continue climb on 195° heading or as assigned by ATC, for vectors to OREOS. Thence

TAKEOFF RUNWAY 28: Climb heading 277° to 1260, then continue climb on 277° heading or as assigned by ATC, for vectors to OREOS. Thence

TAKEOFF RUNWAY 33: Climb heading 329° to 1260, then continue climb on 329° heading or as assigned by ATC, for vectors to OREOS. Thence

. . . . on depicted route to OBENE, maintain 3000. Expect filed altitude 10 minutes after departure.

ELYNA TRANSITION (OBENE3.ELYNA)

IANNA TRANSITION (OBENE3.IANNA)

JORDY TRANSITION (OBENE3.JORDY)

MNOSO TRANSITION (OBENE3.MNOSO): For Minneapolis terminal area arrivals or assigned by ATC.

NITWT TRANSITION (OBENE3.NITWT)

OGALE TRANSITION (OBENE3.OGALE)

ROTTN TRANSITION (OBENE3.ROTTN)

ROEZZ TRANSITION (OBENE3.ROEZZ)

SMIDD TRANSITION (OBENE3.SMIDD)

EC-3, 22 FEB 2024 to 21 MAR 2024

EC-3, 22 FEB 2024 to 21 MAR 2024