

LOC/DME I-DLL 109.15	APP CRS 010°	Rwy Idg 5010
Chan 28(Y)		TDZE 979
		Apt Elev 979

LOC RWY 1

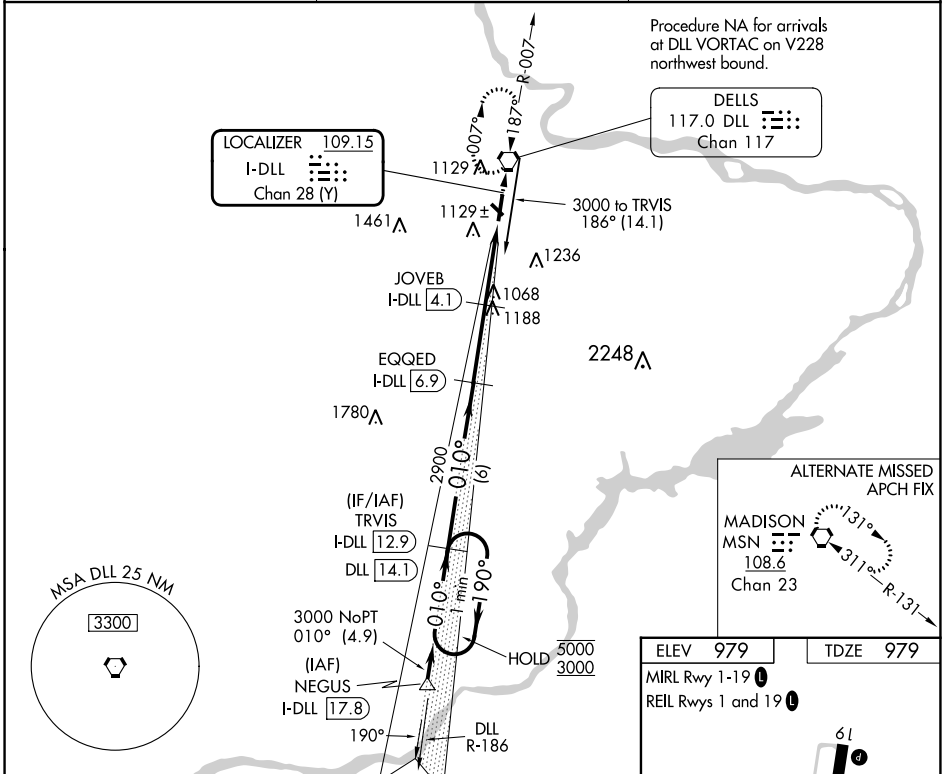
BARABOO/WISCONSIN DELLS RGNL (DLL)

DME required.

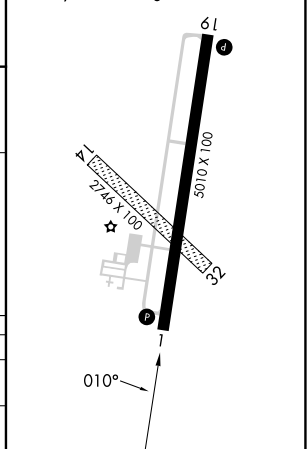
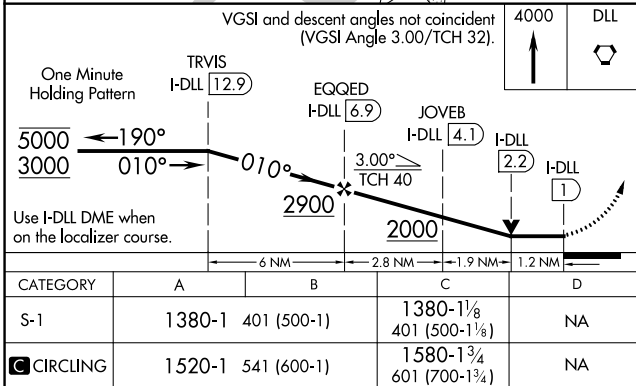
▽ Circling NA to Rwys 14 and 32.
△ NA Rwy 1 helicopter visibility reduction below 3/4 SM NA.

MISSED APPROACH: Climb to 4000 direct DLL VORTAC and hold, continue climb-in-hold to 4000.

AWOS-3 118.325	MADISON APP CON ★ 135.45 343.7	UNICOM 123.05(CTAF) 0
--------------------------	--	---------------------------------



ELEV 979	TDZE 979
MIRL Rwy 1-19	REIL Rwys 1 and 19



EC-3, 22 FEB 2024 to 21 MAR 2024

EC-3, 22 FEB 2024 to 21 MAR 2024

WAAS CH 53304 W01A	APP CRS 010°	Rwy Idg 5010 TDZE 979 Apt Elev 979
--	------------------------	---

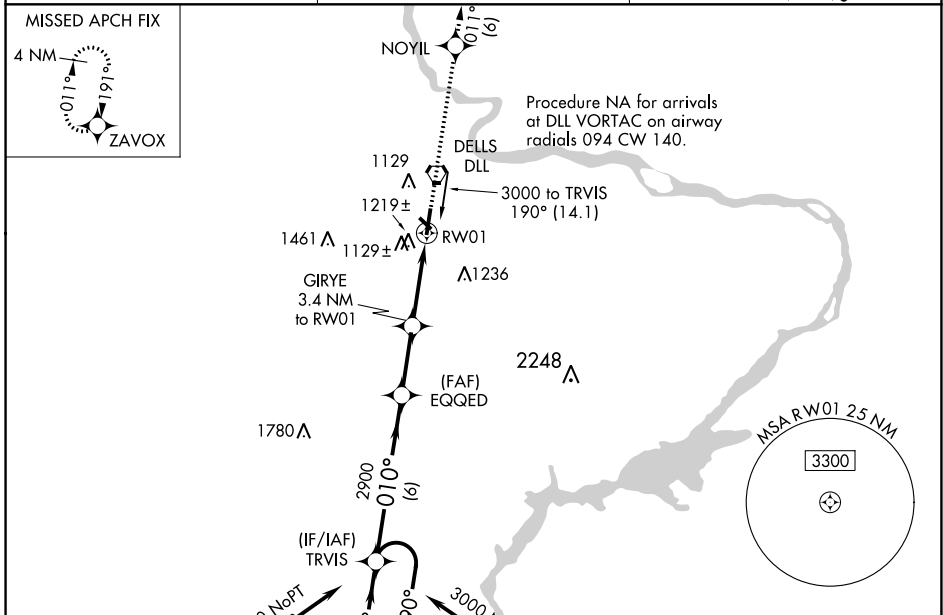
RNAV (GPS) RWY 1

BARABOO/WISCONSIN DELLS RGNL (DLL)

⚠ Baro-VNAV NA when using Lone Rock altimeter setting. For uncompensated Baro-VNAV systems, LNAV/VNAV NA below -22°C (-7°F) or above 54°C (130°F). DME/DME RNP-0.3 NA. When local altimeter setting not received, use Lone Rock altimeter setting and increase all DA 97 feet/MDA 100 feet. Increase LPV all Cats visibility 1/8 mile, LNAV/VNAV all Cats visibility 3/8 mile, LNAV Cat C visibility 3/8 mile, and Circling Cat C visibility 1/2 mile. Circling NA to Rwy 14-32. Rwy 1 helicopter visibility reduction below 3/4 SM NA.

MISSED APPROACH: Climb to 3000 direct NOYIL and on track 011° to ZAVOX and hold.

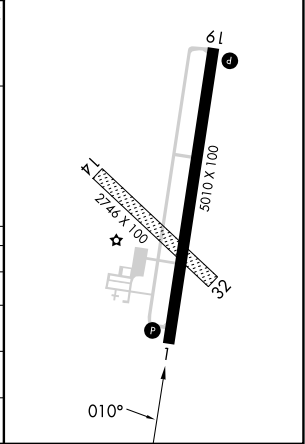
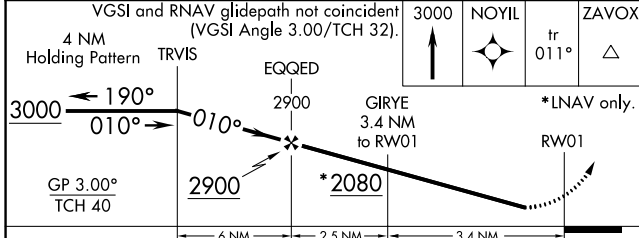
AWOS-3 118.325	MADISON APP CON* 135.45 343.7	UNICOM 123.05 (CTAF)
--------------------------	---	--------------------------------



EC-3, 22 FEB 2024 to 21 MAR 2024

EC-3, 22 FEB 2024 to 21 MAR 2024

ELEV 979	TDZE 979
MIRL Rwy 1-19	REIL Rws 1 and 19



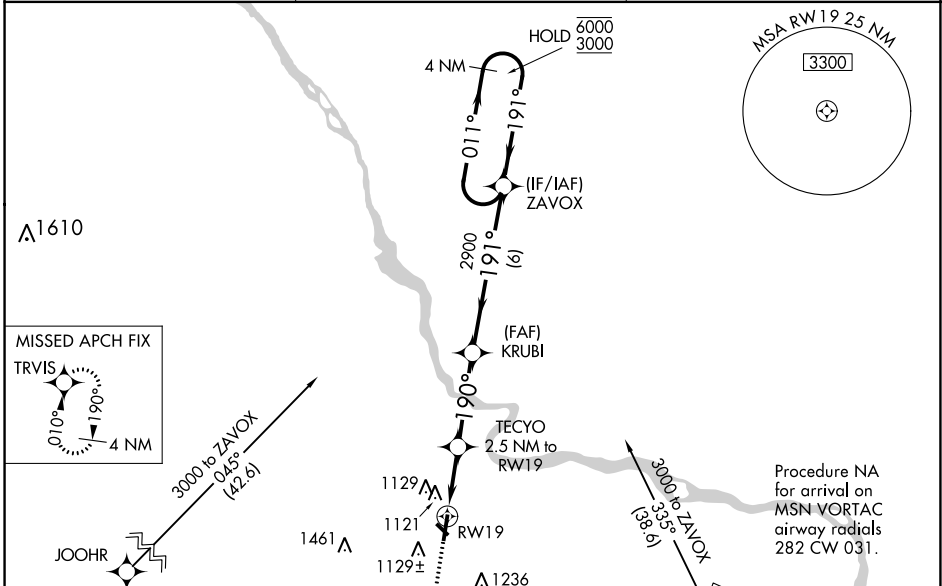
CATEGORY	A	B	C	D
LPV DA	1229-1	250 (300-1)		NA
LNAV/VNAV DA	1391-1 3/8	412 (500-1 3/8)		NA
LNAV MDA	1480-1 501 (600-1)		1480-1 3/8 501 (600-1 3/8)	NA
C CIRCLING	1520-1 541 (600-1)		1580-1 3/4 601 (700-1 3/4)	NA

WAAS CH 78232 W19A	APP CRS 190°	Rwy Idg TDZE Apl Elev	5010 979 979
--	------------------------	-----------------------------	---

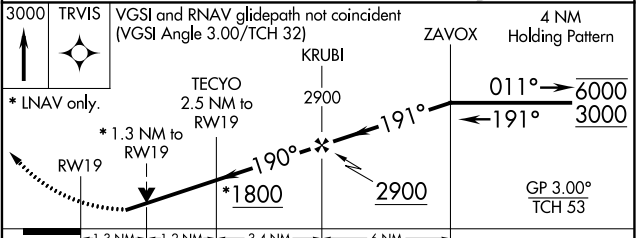
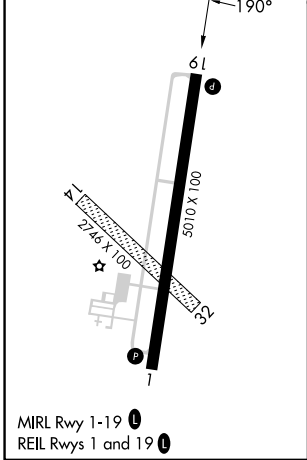
RNAV (GPS) RWY 19
BARABOO/WISCONSIN DELLS RGNL (DLL)

RNP APCH.	<p>⚠ Circling NA to Rwy 14 and 32. Rwy 19 helicopter visibility reduction below ¾ SM NA. For uncompensated Baro-VNAV systems, LNAV/VNAV NA below -16°C or above 54°C.</p>	<p>MISSED APPROACH: Climb to 3000 direct TRVIS and hold.</p>
-----------	--	--

AWOS-3 118.325	MADISON APP CON ★ 135.45 343.7	UNICOM 123.05 (CTAF) 0
--------------------------	--	----------------------------------



ELEV 979	TDZE 979
----------	----------



CATEGORY	A	B	C	D
LPV DA	1341-1		362 (400-1)	NA
LNAV/VNAV DA	1302-1		323 (400-1)	NA
LNAV MDA	1420-1	441 (500-1)	1420-1 3/8 441 (500-1 3/8)	NA
CIRCLING	1520-1	541 (600-1)	1580-1 3/4 601 (700-1 3/4)	NA

EC-3, 22 FEB 2024 to 21 MAR 2024

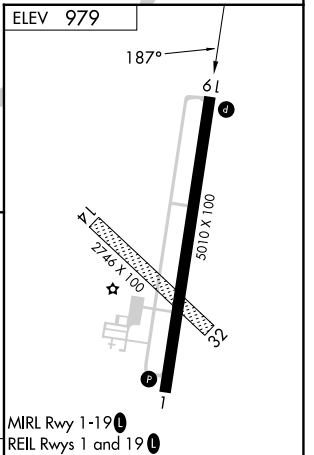
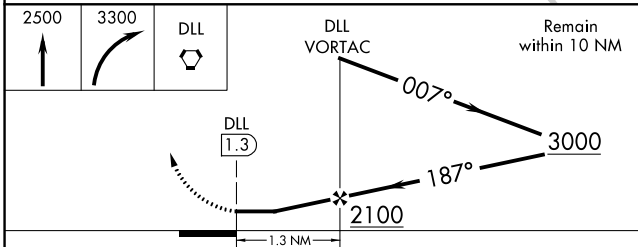
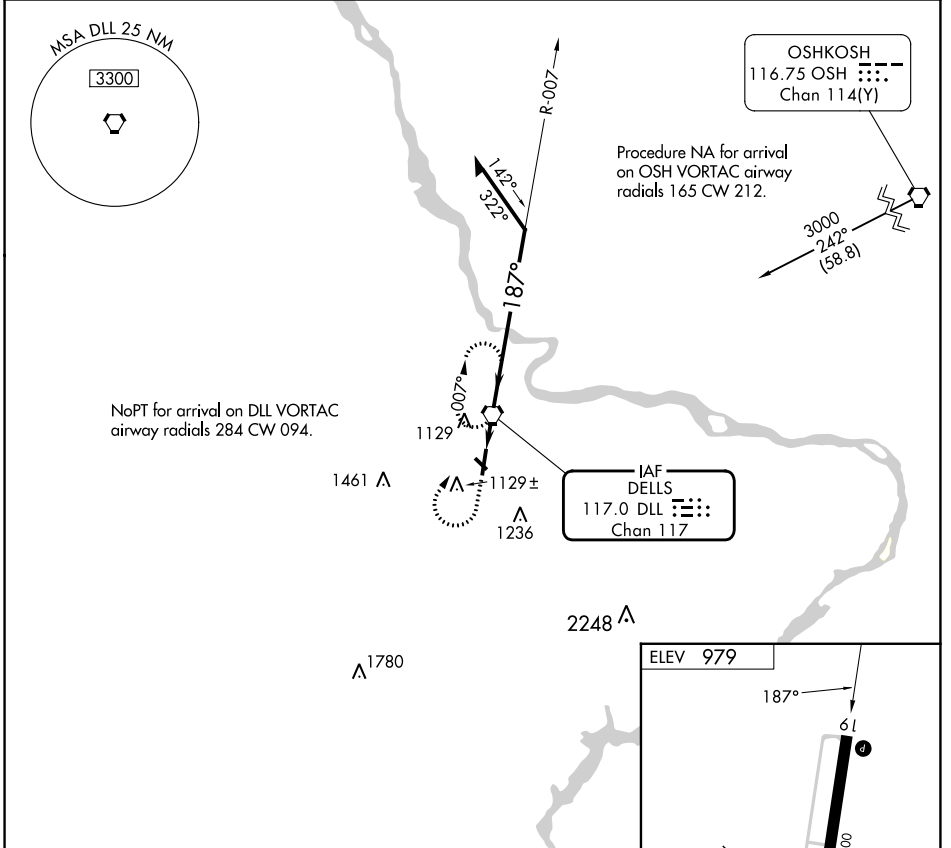
EC-3, 22 FEB 2024 to 21 MAR 2024

VORTAC DLL 117.0 Chan 117	APP CRS 187°	Rwy Idg TDZE Apt Elev	N/A N/A 979
---	------------------------	-----------------------------	--

VOR-A
BARABOO/WISCONSIN DELLS RGNL (DLL)

⚠ Circling NA to Rwy's 14 and 32.
MISSED APPROACH: Climb to 2500 then climbing right turn to 3300 direct DLL VORTAC and hold, continue climb-in-hold to 3300.

AWOS-3 118.325	MADISON APP CON ★ 135.45 343.7	UNICOM 123.05(CTAF) 0
--------------------------	--	---------------------------------



CATEGORY	A	B	C	D	FAF to MAP 1.3 NM							
CIRCLING	1520-1	541 (600-1)	1580-1¾ 601 (700-1¾)	NA	Knots	60	90	120	150	180		
					Min:Sec	1:18	0:52	0:39	0:31	0:26		