

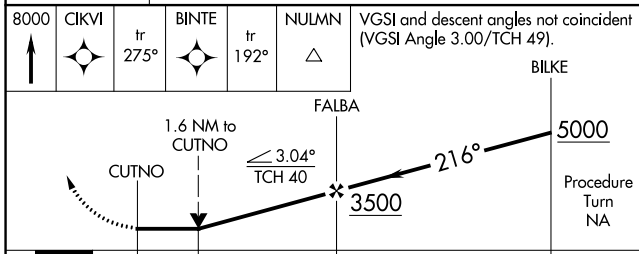
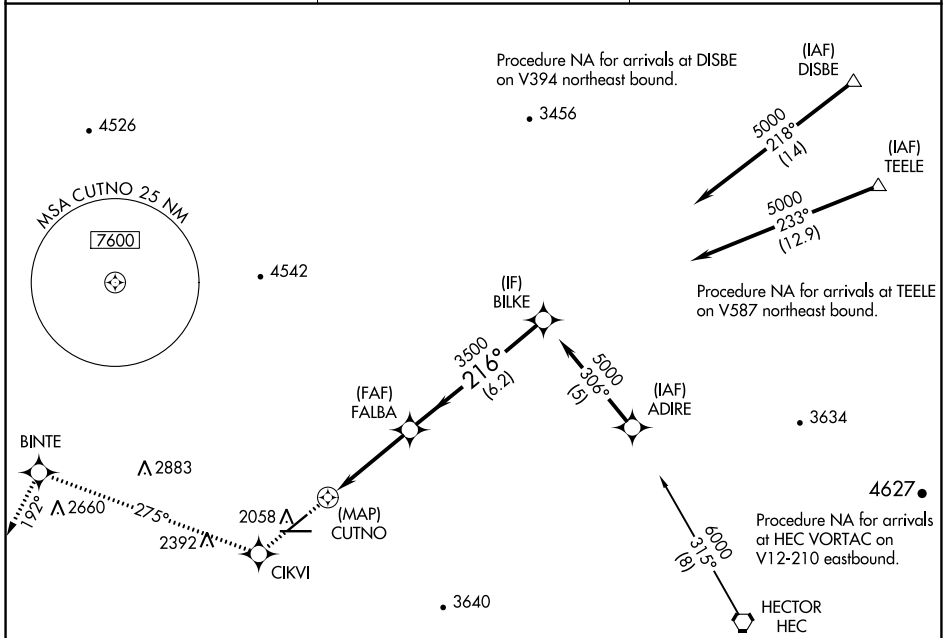
APP CRS <b>216°</b>	Rwy Idg TDZE Apt Elev	<b>5123</b> <b>1918</b> <b>1930</b>
------------------------	-----------------------------	---

# RNAV (GPS) RWY 22

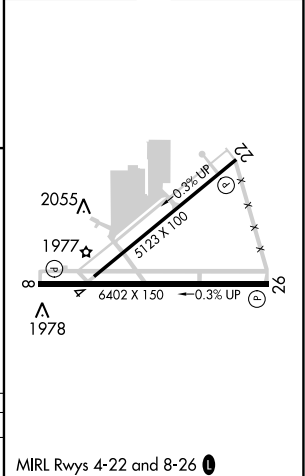
BARSTOW-DAGGETT (DAG)

RNP APCH.	MISSED APPROACH: Climb to 8000 direct CIKVI and on track 275° to BINTE and on track 192° to NULMN and hold, continue climb-in-hold to 8000.
-----------	---

ASOS <b>132.175</b>	LOS ANGELES CENTER <b>132.5 284.7</b>	UNICOM <b>123.0 (CTAF) 1</b>
------------------------	--	---------------------------------



ELEV 1930	TDZE 1918
-----------	-----------



CATEGORY	A	B	C	D
LNAV MDA	2800-1¼	882 (900-1¼)	2800-2¾ 882 (900-2¾)	2800-3 882 (900-3)

SW-3, 07 OCT 2021 to 04 NOV 2021

SW-3, 07 OCT 2021 to 04 NOV 2021

WAAS CH <b>72813</b> <b>W26A</b>	APP CRS <b>255°</b>	Rwy Idg TDZE Apt Elev	<b>6402</b> <b>1918</b> <b>1930</b>
--	------------------------	-----------------------------	---

# RNAV (GPS) RWY 26

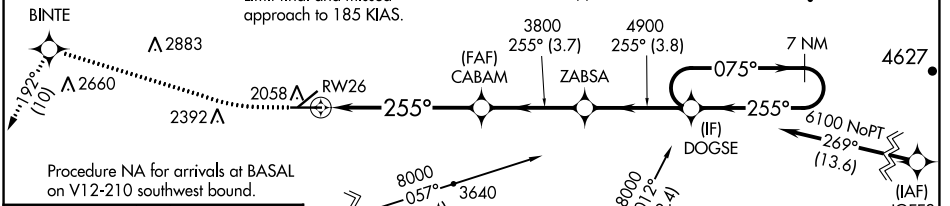
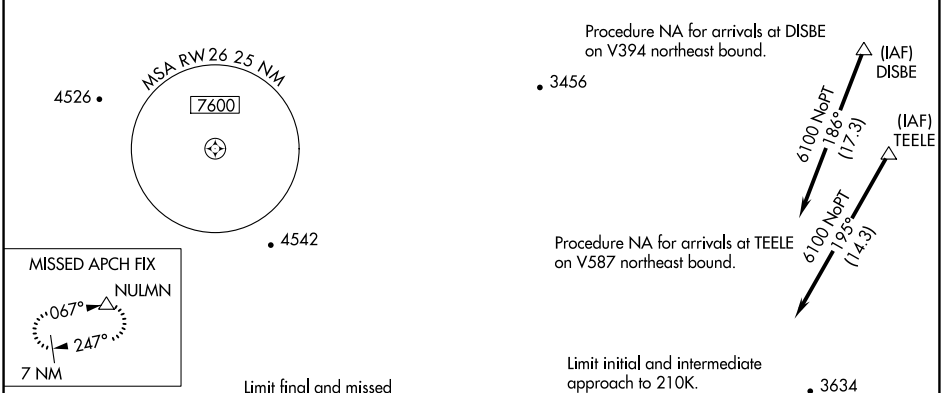
BARSTOW-DAGGETT (DAG)

**RNP APCH.**

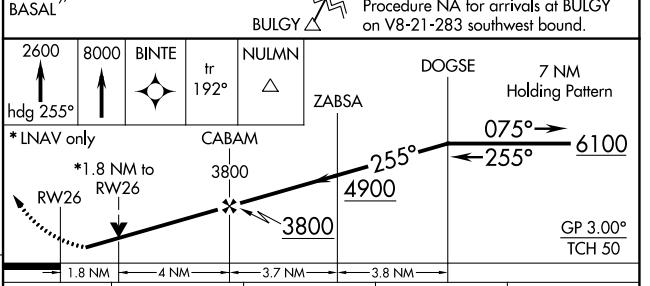
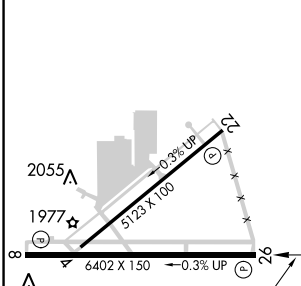
**⚠** For uncompensated Baro-VNAV systems, LNAV/VNAV NA below -4°C or above 54°C. Circling NA for Cat D south of Rwy 8-26. Rwy 26 helicopter visibility reduction below 3/4 SM NA.  
#Missed approach requires a minimum climb of 220 feet per NM to 8000.

**MISSED APPROACH:** Climb to 2600 on heading 255° then climb to 8000 direct BINTE and on track 192° to NULMN and hold, continue climb-in-hold to 8000.

ASOS <b>132.175</b>	LOS ANGELES CENTER <b>132.5 284.7</b>	UNICOM <b>123.0 (CTAF) 0</b>
------------------------	--	---------------------------------



ELEV 1930	TDZE 1918
-----------	-----------



CATEGORY	A	B	C	D
LPV DA#		2222-1	304 (300-1)	
LPV DA		2343-1 3/8	425 (500-1 3/8)	
LNAV/VNAV DA		2389-1 5/8	471 (500-1 5/8)	
LNAV MDA	2540-1	622 (700-1)	2540-1 3/4	622 (700-1 3/4)
<b>C</b> CIRCLING	2640-1 710 (800-1)	2860-1 1/4 930 (1000-1 1/4)	3500-3	1570 (1600-3)

SW-3, 07 OCT 2021 to 04 NOV 2021

SW-3, 07 OCT 2021 to 04 NOV 2021

VORTAC DAG	APP CRS	Rwy Idg	5123
<b>113.2</b>	<b>224°</b>	TDZE	1918
Chan 79		Apt Elev	1930

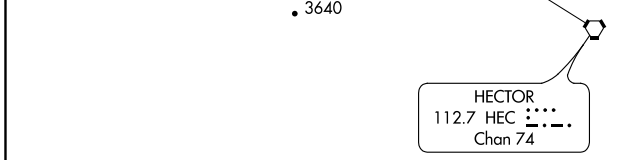
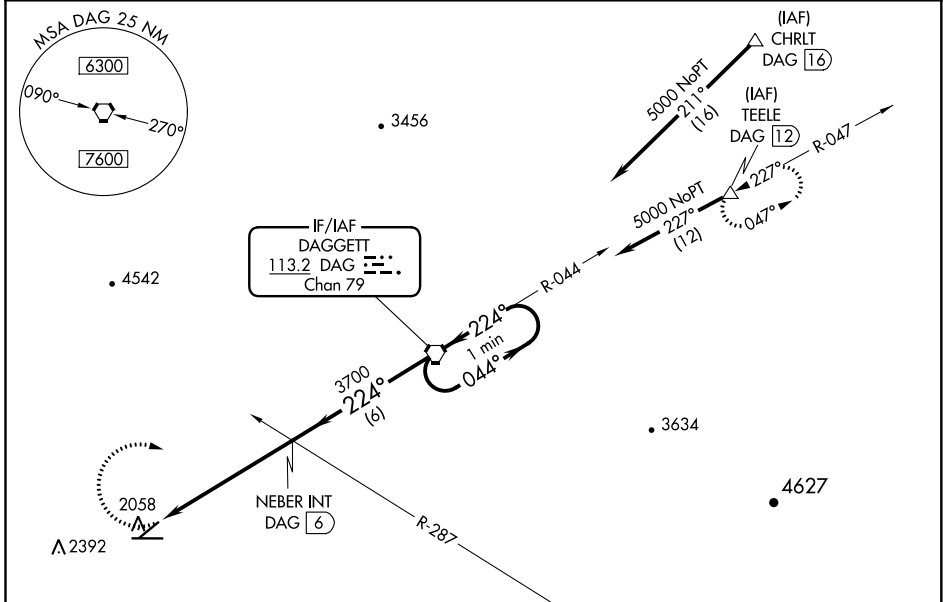
# VOR or TACAN RWY 22

BARSTOW-DAGGETT (DAG)

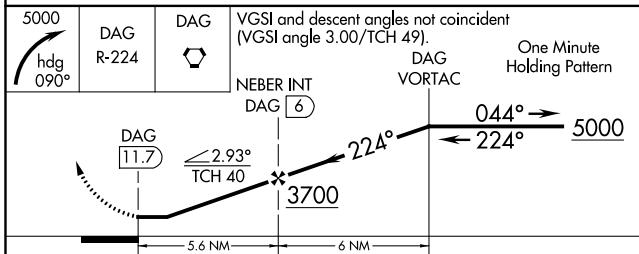
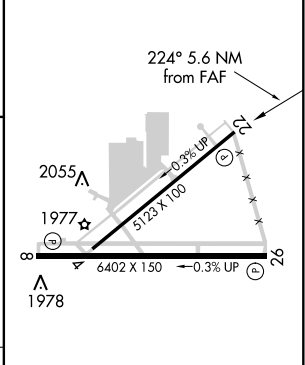
**⚠** Circling NA for Cat D south of Rwy 8-26.

**MISSED APPROACH:** Climbing right turn to 5000 via heading 090° and via DAG VORTAC R-224 to DAG VORTAC and hold (TACAN aircraft climb to 6000 via DAG VORTAC R-047 to TEELE/DAG 12 DME and hold NE, LT 227° inbound).

ASOS <b>132.175</b>	LOS ANGELES CENTER <b>132.5 284.7</b>	UNICOM <b>123.0 (CTAF) ①</b>
------------------------	--	---------------------------------



ELEV 1930	TDZE 1918
-----------	-----------



CATEGORY	A	B	C	D
S-22	3160-1¼ 1242 (1300-1¼)	3440-1½ 1522 (1600-1½)	3440-3 1522 (1600-3)	3540-3 1622 (1700-3)
<b>C</b> CIRCLING	3160-1¼ 1230 (1300-1¼)	3440-1½ 1510 (1600-1½)	3500-3 1570 (1600-3)	3540-3 1610 (1700-3)

MIRL Rwy 4-22 and 8-26 ①

FAF to MAP 5.6 NM

Knots	60	90	120	150	180
Min:Sec	5:36	3:44	2:48	2:14	1:52

SW-3, 07 OCT 2021 to 04 NOV 2021

SW-3, 07 OCT 2021 to 04 NOV 2021