

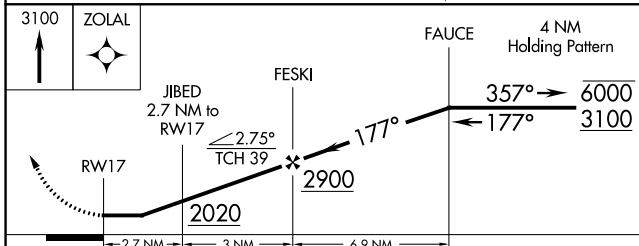
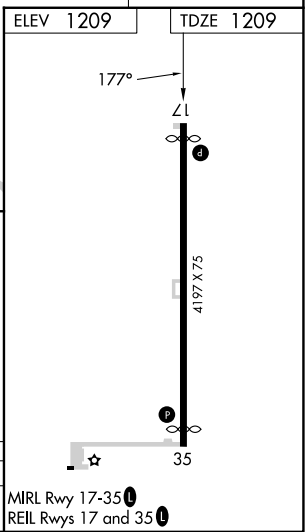
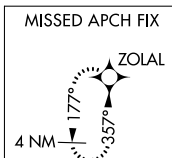
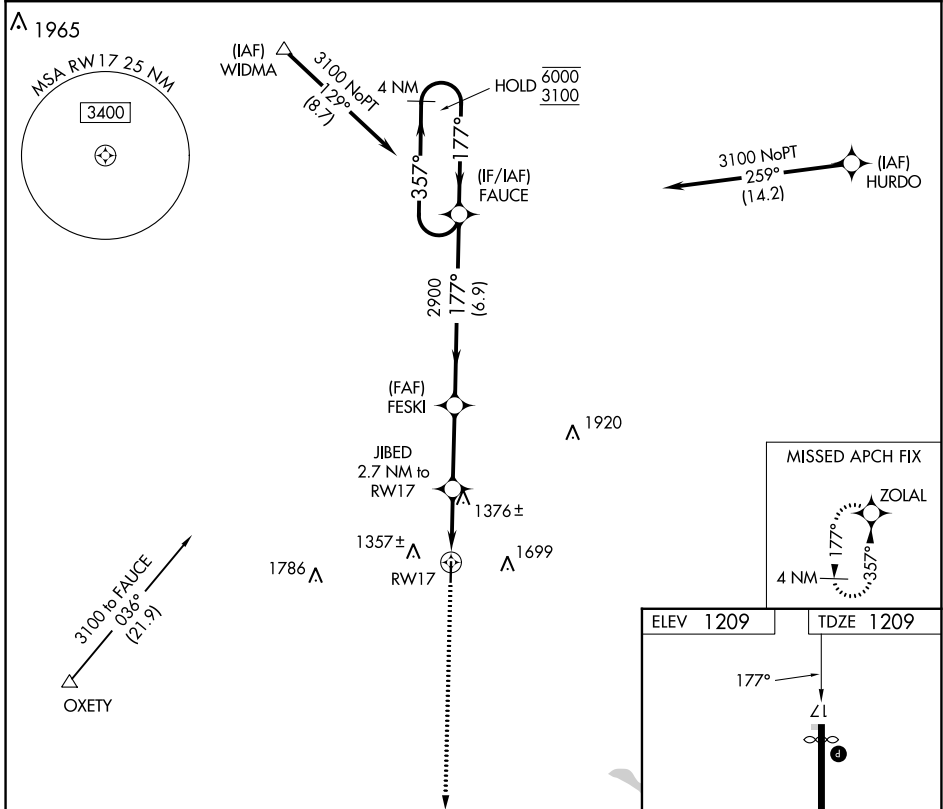
APP CRS 177°	Rwy Idg 3995
	TDZE 1209
	Apt Elev 1209

RNAV (GPS) RWY 17

CLAY CENTER MUNI (CYW)

RNP APCH.		MISSED APPROACH: Climb to 3100 direct ZOLAL and hold.
<p>▼ Procedure NA at night. Rwy 17 helicopter visibility reduction below 1 SM NA.</p> <p>▲ NA When local altimeter setting not received, use Salina altimeter setting and increase all MDA 120 feet and LNAV Cat C visibility 3/8 SM.</p>		

AWOS-3T 119.95	MARSHALL AAF APP CON * 121.25 254.35	UNICOM 122.8 (CTAF) 0
--------------------------	--	---------------------------------



CATEGORY	A	B	C	D
LNAV MDA	1640-1	431 (500-1)	1640-1 1/4 431 (500-1 1/4)	NA

MIRL Rwy 17-35 0
REIL Rwy 17 and 35 0

NC-2, 22 FEB 2024 to 21 MAR 2024

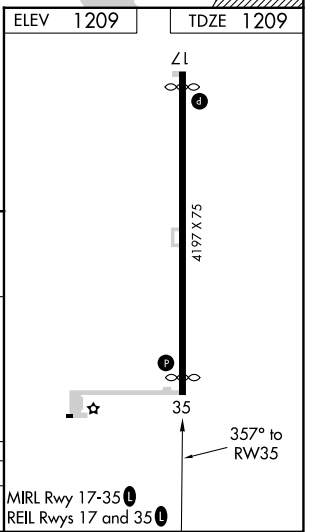
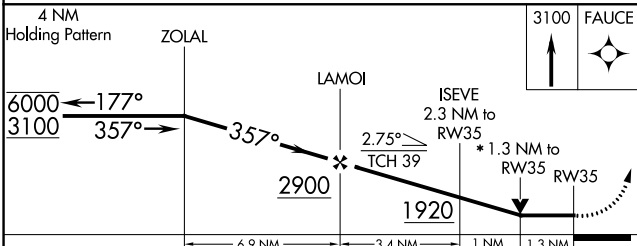
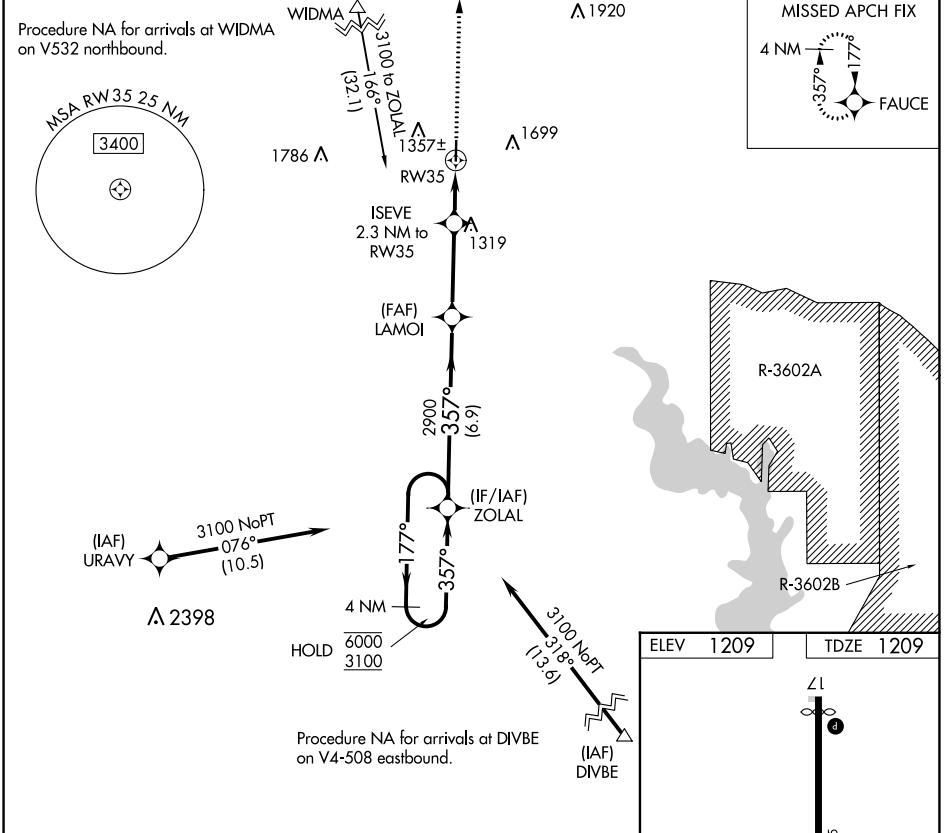
NC-2, 22 FEB 2024 to 21 MAR 2024

APP CRS	Rwy Idg	3970
357°	TDZE	1209
	Apt Elev	1209

RNAV (GPS) RWY 35

CLAY CENTER MUNI (CYW)

RNP APCH.		MISSED APPROACH: Climb to 3100 direct FAUCE and hold.
<p>NA Rwy 35 helicopter visibility reduction below $\frac{3}{8}$ SM NA. VDP NA when using Salina altimeter setting. When local altimeter setting not received, use Salina altimeter setting and increase all MDA 120 feet and LNAV Cat C visibility $\frac{3}{8}$ SM.</p>		
AWOS-3T	MARSHALL AAF APP CON *	UNICOM
119.95	121.25 254.35	122.8 (CTAF)



CATEGORY	A	B	C	D
LNAV MDA	1580-1	371 (400-1)		NA

NC-2, 22 FEB 2024 to 21 MAR 2024

NC-2, 22 FEB 2024 to 21 MAR 2024