

WAAS CH 86838 W16A	APP CRS 157°	Rwy Idg 5001 TDZE 774 Apt Elev 774
----------------------------------------	------------------------	---------------------------------------------------------------

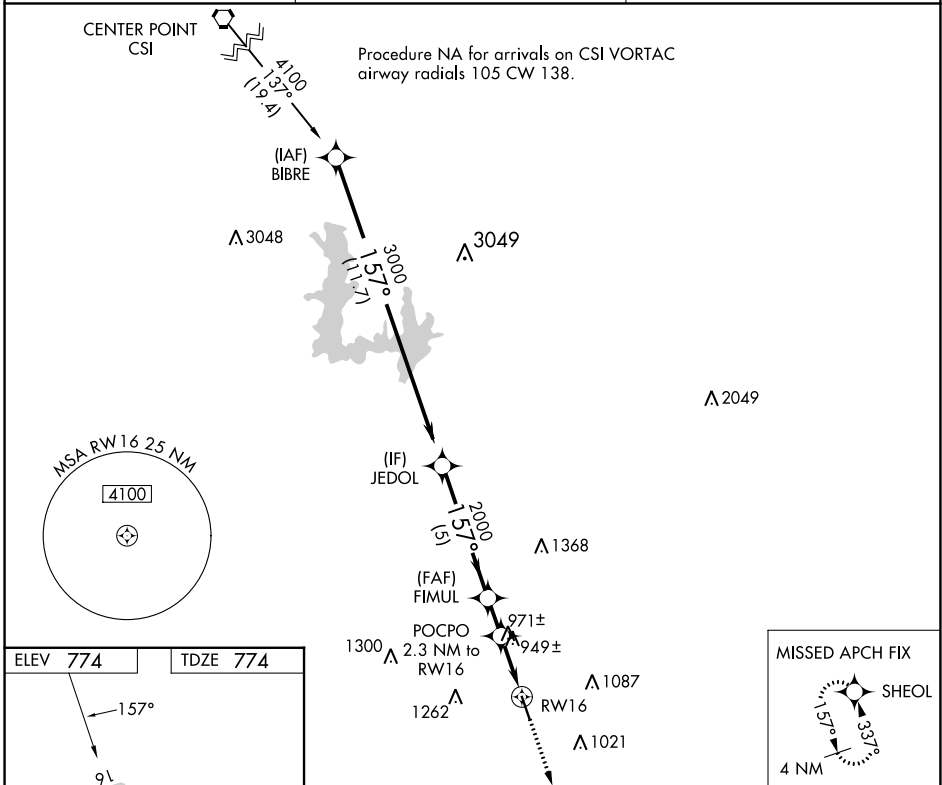
RNAV (GPS) RWY 16

CASTROVILLE MUNI (CVB)

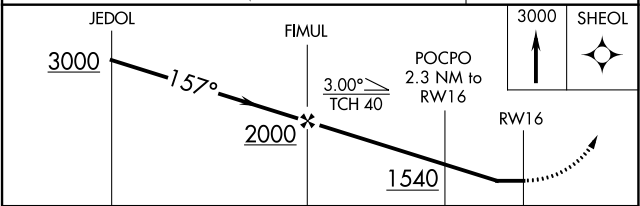
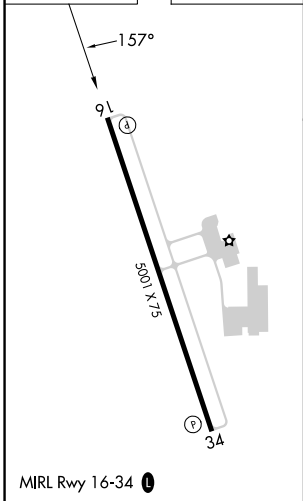
⚠ DME/DME RNP-0.3 NA. When local altimeter setting not received, use Lackland AFB (Kelly FLD Annex) altimeter setting: increase all MDA 60 feet, increase all Cat C visibilities ¼ mile. Helicopter visibility reduction below 1 SM NA. Night landing: Rwy 16 NA.

⚠ MISSED APPROACH: Climb to 3000 direct SHEOL and hold.

AWOS-3 119.25	SAN ANTONIO APP CON 118.05 353.5	UNICOM 122.8 (CTAF) 0
-------------------------	--------------------------------------------	---------------------------------



ELEV 774	TDZE 774
-----------------	-----------------



	A	B	C	D
CATEGORY	A	B	C	D
LP MDA	1200-1	426 (500-1)	1200-1¼ 426 (500-1¼)	NA
LNAV MDA	1240-1	466 (500-1)	1240-1⅜ 466 (500-1⅜)	NA
C CIRCLING	1240-1 466 (500-1)	1380-1 606 (700-1)	1580-2¼ 806 (900-2¼)	NA

SC-3, 22 FEB 2024 to 21 MAR 2024

SC-3, 22 FEB 2024 to 21 MAR 2024

WAAS CH 50139 W34A	APP CRS 337°	Rwy Idg TDZE Apt Elev	5001 769 774
----------------------------------------	------------------------	-----------------------------	-----------------------------------------

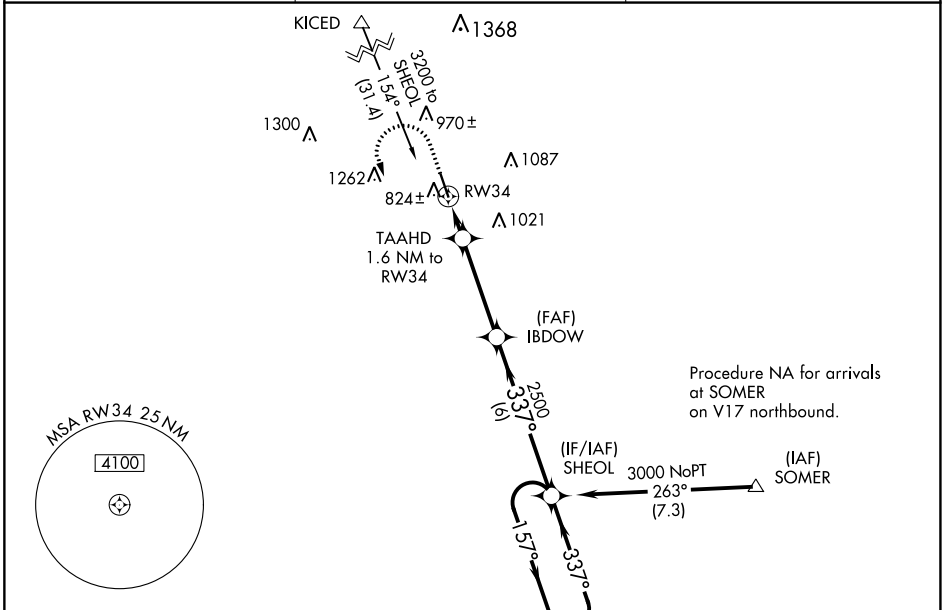
RNAV (GPS) RWY 34

CASTROVILLE MUNI (CVB)

For uncompensated Baro-VNAV systems, LNAV/VNAV NA below -15°C (5°F) or above 54°C (130°F). DME/DME RNP-0.3 NA. When local altimeter setting not received, use Lackland AFB (Kelly Fld Annex) altimeter setting: increase all DA/MDA 60 feet and all visibilities ¼ mile. Helicopter visibility reduction below ¼ SM NA. Night landing: Rwy 16 NA.

MISSED APPROACH: Climb to 1300 then climbing left turn to 3000 direct SHEOL and hold.

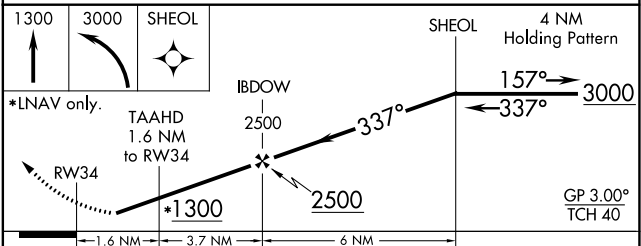
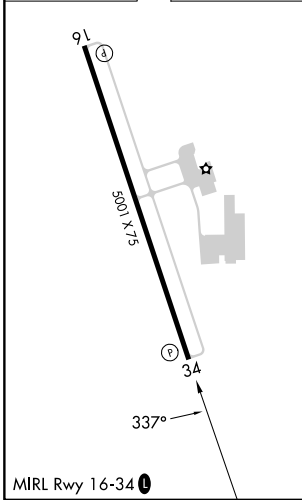
AWOS-3 119.25	SAN ANTONIO APP CON 118.05 353.5	UNICOM 122.8 (CTAF) 0
-------------------------	--------------------------------------------	---------------------------------



SC-3, 22 FEB 2024 to 21 MAR 2024

SC-3, 22 FEB 2024 to 21 MAR 2024

ELEV 774	TDZE 769
----------	----------



CATEGORY	A	B	C	D
LPV DA	1019-7/8	250 (300-7/8)		NA
LNAV/VNAV DA	1127-1 1/4	358 (400-1 1/4)		NA
LNAV MDA	1200-1	431 (500-1)	1200-1 1/8 431 (500-1 1/8)	NA
C CIRCLING	1200-1 426 (500-1)	1380-1 606 (700-1)	1580-2 1/4 806 (900-2 1/4)	NA