



LOC I-BZF <b>109.5</b>	APP CRS <b>175°</b>	Rwy Idg TDZE Apt Elev	<b>13503</b> <b>1922</b> <b>1922</b>
---------------------------	------------------------	-----------------------------	--

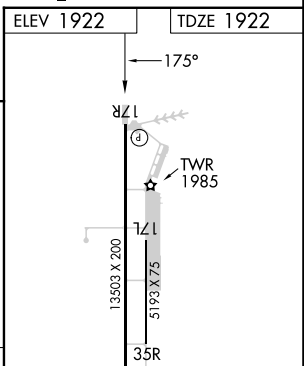
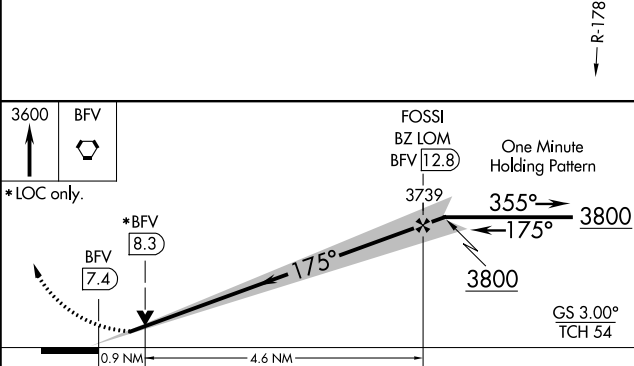
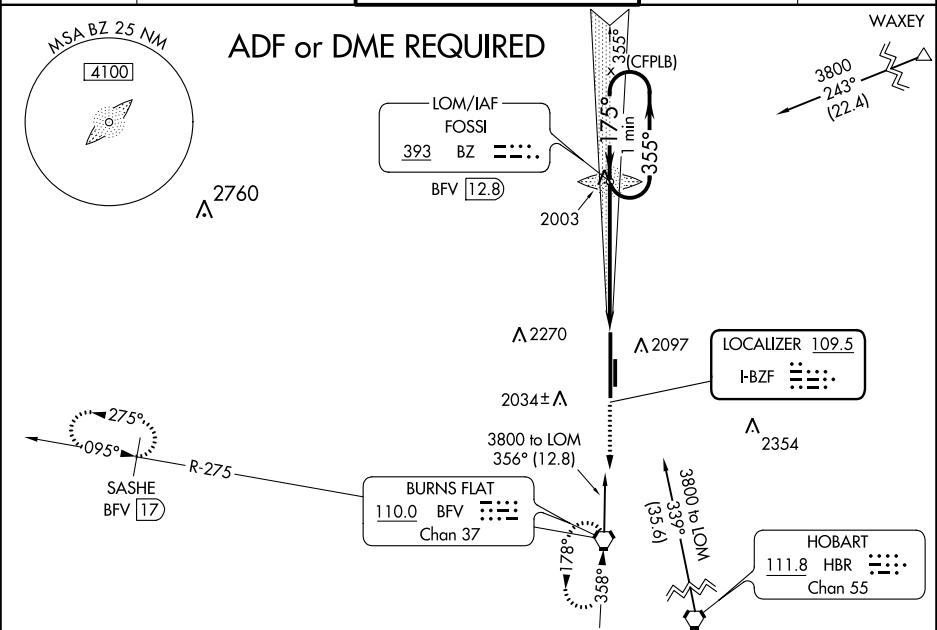
# ILS or LOC RWY 17R

CLINTON/SHERMAN (CSM)

**⚠** Circling NA east of Rwy 17R-35L.

MISSED APPROACH: Climb to 3600 direct BFV VORTAC and hold (TACAN aircraft climb to 3000 then climbing right turn to 5000 on heading 220° and on BFV VORTAC R-275 to SASHE/BFV 17 DME and hold west, left turn, 095° inbound.)

ASOS <b>118.45</b>	FORT WORTH CENTER <b>128.4 269.37</b>	CLINTON/SHERMAN TOWER* <b>119.6 (CTAF) 0 256.9</b>	GND CON <b>121.7 239.0</b>	UNICOM <b>122.95</b>
-----------------------	--	---	-------------------------------	-------------------------



CATEGORY	S-ILS 17R					S-LOC 17R					
	A	B	C	D	E	A	B	C	D	E	
S-ILS 17R	2122-3/4 200 (200-3/4)					2260-1 338 (400-1)					
S-LOC 17R	2122-3/4 200 (200-3/4)					2260-1 338 (400-1)					
CIRCLING	2340-1	2380-1	2380-1½	2620-2¼	2620-2½	2340-1	2380-1	2380-1½	2620-2¼	2620-2½	
	418 (500-1)	458 (500-1)	458 (500-1½)	698 (700-2¼)	698 (700-2½)	418 (500-1)	458 (500-1)	458 (500-1½)	698 (700-2¼)	698 (700-2½)	
Knots						Knots					
60						60					
90						90					
120						120					
150						150					
180						180					
Min:Sec						Min:Sec					
5:30						5:30					
3:40						3:40					
2:45						2:45					
2:12						2:12					
1:50						1:50					

SC-1, 22 FEB 2024 to 21 MAR 2024

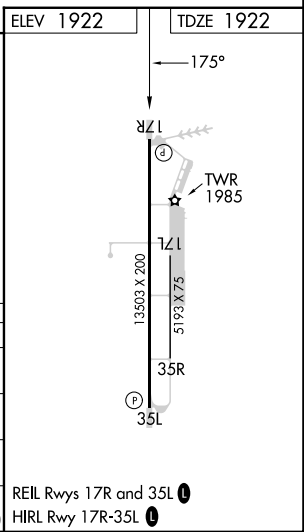
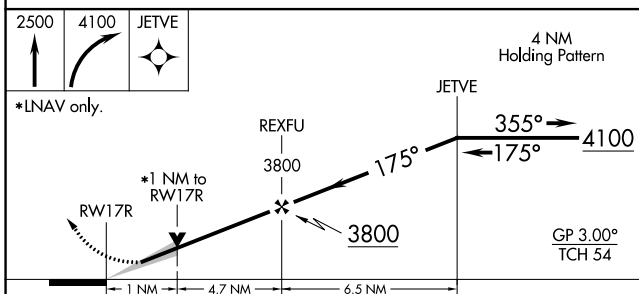
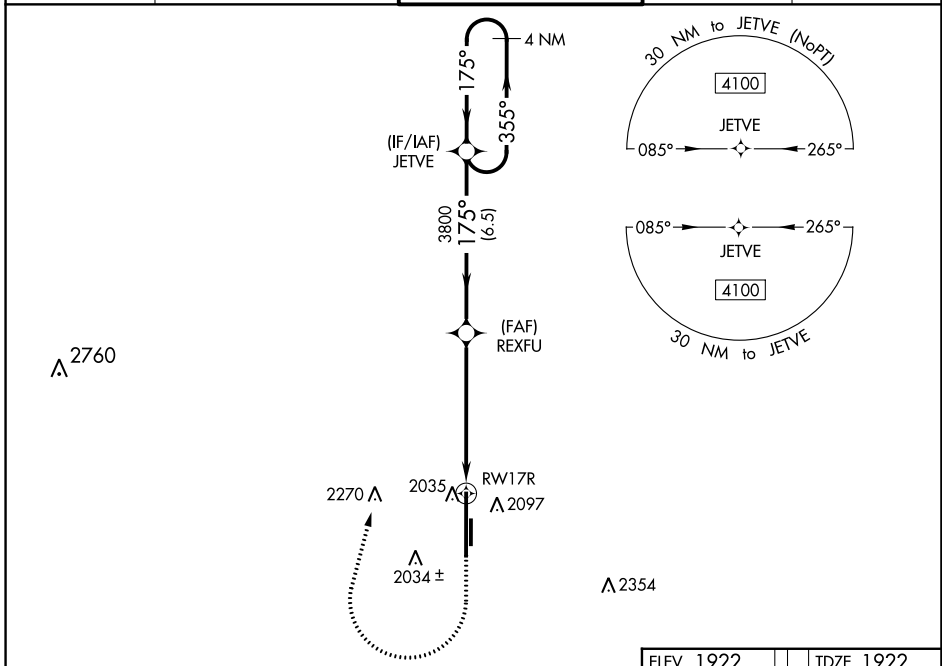
SC-1, 22 FEB 2024 to 21 MAR 2024

WAAS CH <b>86717</b> W17A	APP CRS <b>175°</b>	Rwy Idg <b>13503</b> TDZE <b>1922</b> Apt Elev <b>1922</b>
---------------------------------	------------------------	--

# RNAV (GPS) RWY 17R

CLINTON/SHERMAN (CSM)

<p>▼ For uncompensated Baro-VNAV systems, LNAV/VNAV NA below -12°C (11°F) or above 54°C (130°F). Circling NA east of Rwy 17R-35L. DME/DME RNP-0.3 NA.</p>	<p>MISSED APPROACH: Climb to 2500 then climbing right turn to 4100 direct JETVE and hold.</p>			
ASOS <b>118.45</b>	FORT WORTH CENTER <b>128.4 269.37</b>	CLINTON/SHERMAN TOWER* <b>119.6 (CTAF) 0 256.9</b>	GND CON <b>121.7 239.0</b>	UNICOM <b>122.95</b>



CATEGORY	A	B	C	D	E
LPV DA		2122-3/4	200 (200-3/4)		
LNAV/VNAV DA		2234-1	312 (400-1)		
LNAV MDA		2300-1	378 (400-1)		
CIRCLING	2340-1 418 (500-1)	2380-1 458 (500-1)	2380-1 1/2 458 (500-1 1/2)	2620-2 1/4 698 (700-2 1/4)	2620-2 1/2 698 (700-2 1/2)

SC-1, 22 FEB 2024 to 21 MAR 2024

SC-1, 22 FEB 2024 to 21 MAR 2024

BURNS FLAT, OKLAHOMA

AL-778 (FAA)

23110

WAAS CH <b>40217</b> <b>W35A</b>	APP CRS <b>355°</b>	Rwy Idg <b>13503</b> TDZE <b>1913</b> Apt Elev <b>1922</b>
--	------------------------	--

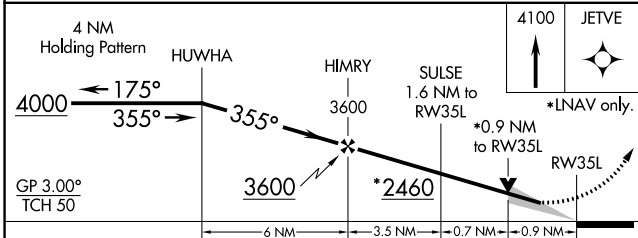
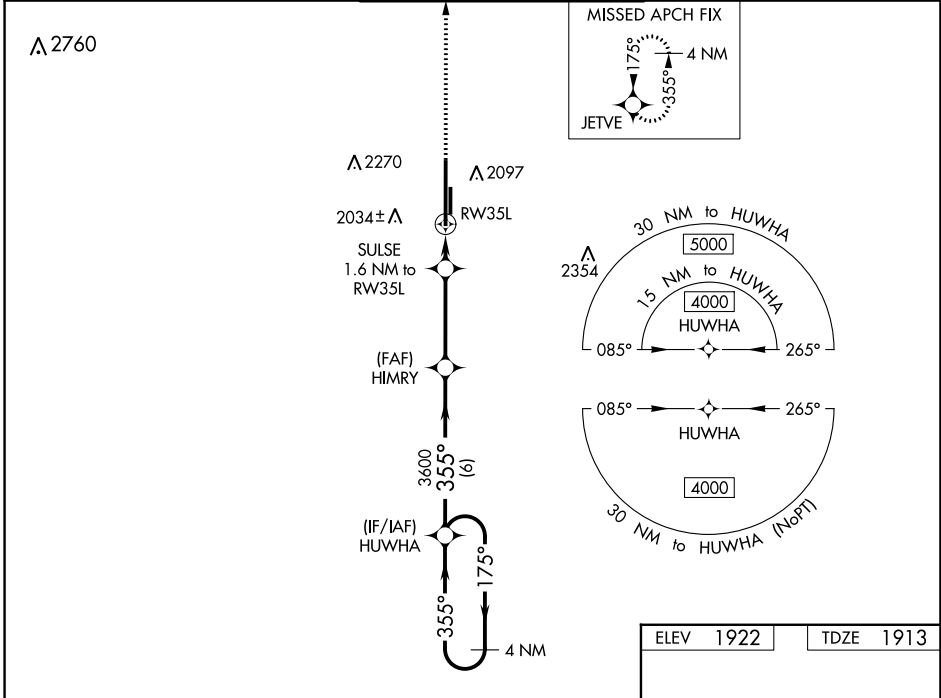
# RNAV (GPS) RWY 35L

CLINTON/SHERMAN (CS/M)

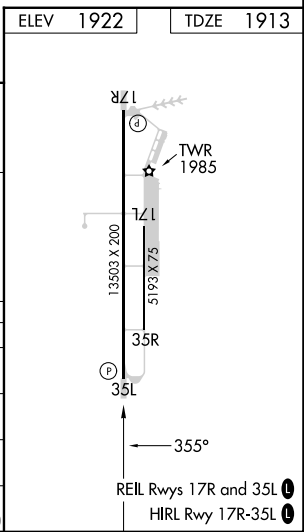
**⚠** For uncompensated Baro-VNAV systems, LNAV/VNAV NA below -12°C (11°F) or above 54°C (130°F). Circling NA east of Rwy 17R-35L. DME/DME RNP-0.3 NA.

MISSED APPROACH: Climb to 4100 direct JETVE and hold.

ASOS <b>118.45</b>	FORT WORTH CENTER <b>128.4 269.37</b>	CLINTON/SHERMAN TOWER* <b>119.6 (CTAF) 256.9</b>	GND CON <b>121.7 239.0</b>	UNICOM <b>122.95</b>
-----------------------	--	---	-------------------------------	-------------------------



CATEGORY	A	B	C	D	E
LPV DA		2113-¾	200 (200-¾)		
LNAV/VNAV DA		2163-¾	250 (300-¾)		
LNAV MDA		2240-1	327 (400-1)		
<b>C</b> CIRCLING	2340-1 418 (500-1)	2380-1 458 (500-1)	2380-1½ 458 (500-1½)	2620-2¼ 698 (700-2¼)	2620-2½ 698 (700-2½)



SC-1, 22 FEB 2024 to 21 MAR 2024

SC-1, 22 FEB 2024 to 21 MAR 2024

BURNS FLAT, OKLAHOMA  
Amdt 1A 17AUG17

35°20'N-99°12'W

# CLINTON/SHERMAN (CS/M)

## RNAV (GPS) RWY 35L

BURNS FLAT, OKLAHOMA

AL-778 (FAA)

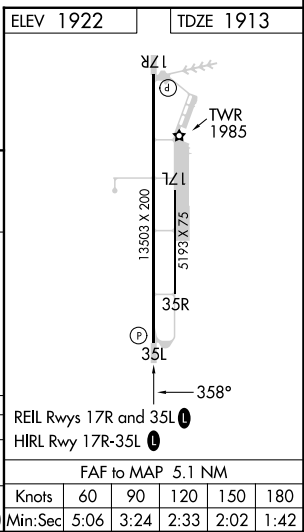
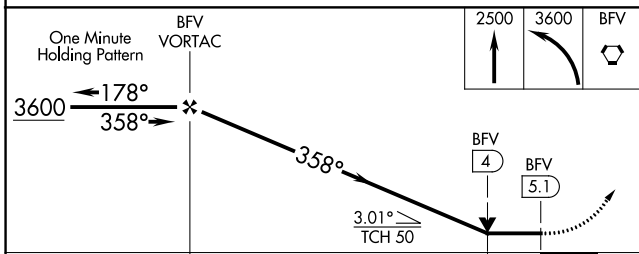
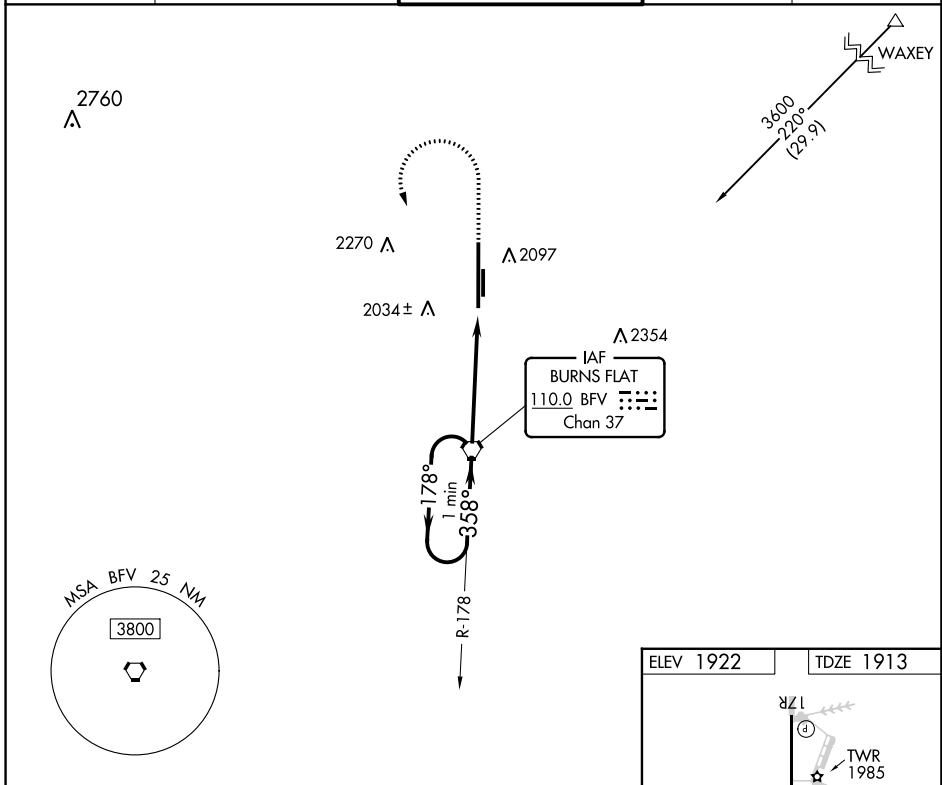
23110

VORTAC BFV <b>110.0</b> Chan 37	APP CRS <b>358°</b>	Rwy Idg TDZE Apt Elev	<b>13503</b> <b>1913</b> <b>1922</b>
---------------------------------------	------------------------	-----------------------------	--

# VOR RWY 35L

CLINTON/SHERMAN (CSM)

<p><b>▽</b> Circling NA east of runway 17R-35L.</p> <p><b>▲</b> MISSED APPROACH: Climb to 2500 then climbing left turn to 3600 direct BFV VORTAC and hold.</p>		CLINTON/SHERMAN TOWER★ <b>119.6</b> (CTAF) <b>0 256.9</b>	GND CON <b>121.7 239.0</b>	UNICOM <b>122.95</b>
ASOS <b>118.45</b>	FORT WORTH CENTER <b>128.4 269.37</b>			



CATEGORY	A	B	C	D	E
S-35L	2340-1	427 (500-1)	2340-1¼	427 (500-1¼)	
<b>C</b> CIRCLING	2340-1 418 (500-1)	2380-1 458 (500-1)	2380-1½ 458 (500-1½)	2620-2¼ 698 (700-2¼)	2620-2½ 698 (700-2½)
FAF to MAP 5.1 NM					
Knots	60	90	120	150	180
Min:Sec	5:06	3:24	2:33	2:02	1:42

BURNS FLAT, OKLAHOMA  
Amdt 12A 17AUG17

35°20'N-99°12'W

# CLINTON/SHERMAN (CSM) VOR RWY 35L

SC-1, 22 FEB 2024 to 21 MAR 2024

SC-1, 22 FEB 2024 to 21 MAR 2024