

WAAS CH 93513	APP CRS 010°	Rwy Idg TDZE Apt Elev	6604 87 91
W01A			

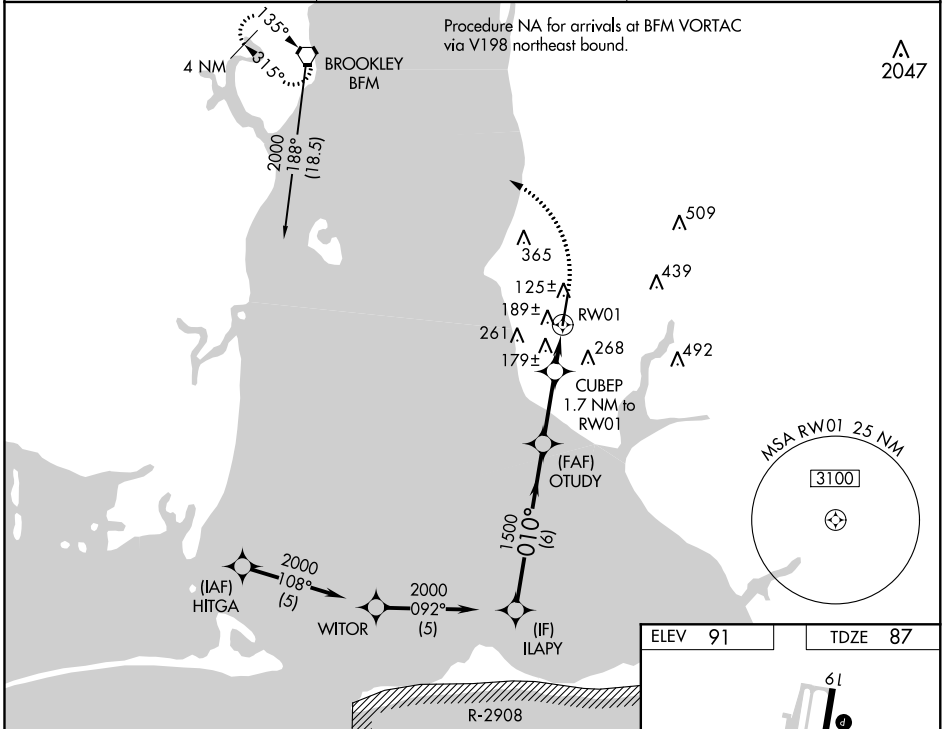
RNAV (GPS) RWY 1

H L SONNY CALLAHAN (CQF)

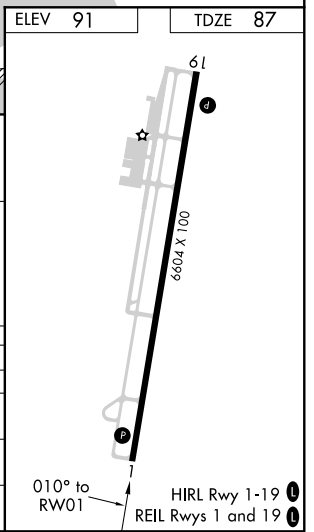
⚠ Baro-VNAV NA when using Mobile Downtown altimeter setting. For uncompensated Baro-VNAV systems, LNAV/VNAV NA below -15°C (5°F) or above 43°C (109°F). DME/DME RNP-0.3 NA. VDP NA with Mobile Downtown altimeter setting. When local altimeter setting not received, use Mobile Downtown altimeter setting and increase all DA 42 feet and MDA 60 feet and increase LNAV/VNAV all Cats and LNAV Cat C and D visibility 1/8 mile.

⚠ MISSED APPROACH: Climb to 700 then climbing left turn to 2000 direct BFM VORTAC and hold.

AWOS-3PT 118.425	MOBILE APP CON ★ 118.5 269.3	UNICOM 123.0 (CTAF) 0
----------------------------	--	---------------------------------



Procedure Turn NA 2000	ILAPY	OTUDY	CUBEP	RW01	RW01	RW01	BFM
GP 3.00° TCH 35	010°	1500	1.7 NM to RW01	*1 NM to RW01	1 NM		*LNAV only.
CATEGORY	A	B	C	D			
LPV DA		287-3/4	200 (200-3/4)				
LNAV/VNAV DA		475-1 3/8	388 (400-1 3/8)				
LNAV MDA		440-1	353 (400-1)				
CIRCLING	560-1	469 (500-1)	580-1 1/2 489 (500-1 1/2)	660-2 569 (600-2)			



SE-4, 07 NOV 2019 to 05 DEC 2019

SE-4, 07 NOV 2019 to 05 DEC 2019

WAAS CH 99313 W19A	APP CRS 190°	Rwy Idg TDZE Apt Elev	6604 91 91
--	------------------------	-----------------------------	---------------------------------------

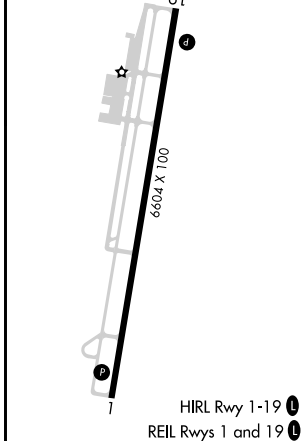
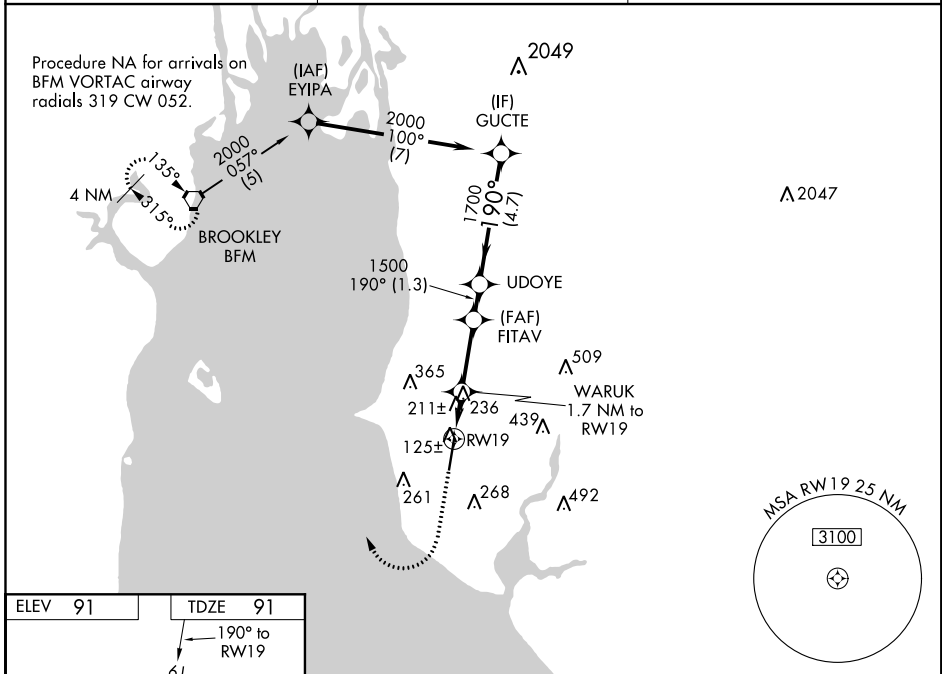
RNAV (GPS) RWY 19

H L SONNY CALLAHAN (CQF)

⚠ Baro-VNAV NA when using Mobile Downtown altimeter setting. For uncompensated Baro-VNAV systems, LNAV/VNAV NA below -15°C (5°F) or above 43°C (109°F).
⚠ DME/DME RNP-0.3 NA. VDP NA with Mobile Downtown altimeter setting. When local altimeter setting not received, use Mobile Downtown altimeter setting and increase all DA 42 feet and all MDA 60 feet and increase LPV and LNAV/VNAV all Cats visibility 1/8 mile and LNAV Cats C and D visibility 1/4 mile.

MISSED APPROACH: Climb to 1500 then climbing right turn to 2000 direct BFM Vortac and hold.

AWOS-3PT 118.425	MOBILE APP CON * 118.5 269.3	UNICOM 123.0 (CTAF) 0
----------------------------	--	---------------------------------



ELEV 91	TDZE 91			
1500	2000	BFM	GUCTE	
*LNAV only.		WARUK 1.7 NM to RWY19	Procedure Turn NA	
*1.2 NM to RWY19		FITAV 1500	GP 3.00° TCH 35	
*660		UDOYE 1700		
-1.2 -0.5 -2.6 -1.3 NM		190°		
CATEGORY	A	B	C	D
LPV DA	341-7/8		250 (300-7/8)	
LNAV/VNAV DA	513-1 1/2		422 (500-1 1/2)	
LNAV MDA	500-1	409 (500-1)	500-1 1/8	409 (500-1 1/8)
CIRCLING	560-1	469 (500-1)	580-1 1/2 489 (500-1 1/2)	660-2 569 (600-2)

SE-4, 07 NOV 2019 to 05 DEC 2019

SE-4, 07 NOV 2019 to 05 DEC 2019

FAIRHOPE, ALABAMA

AL-5522 (FAA)

19171

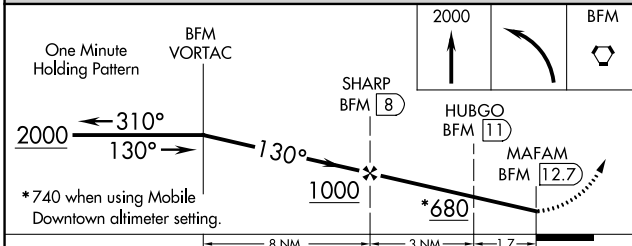
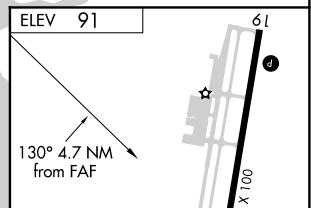
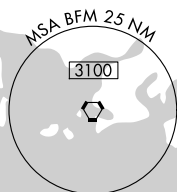
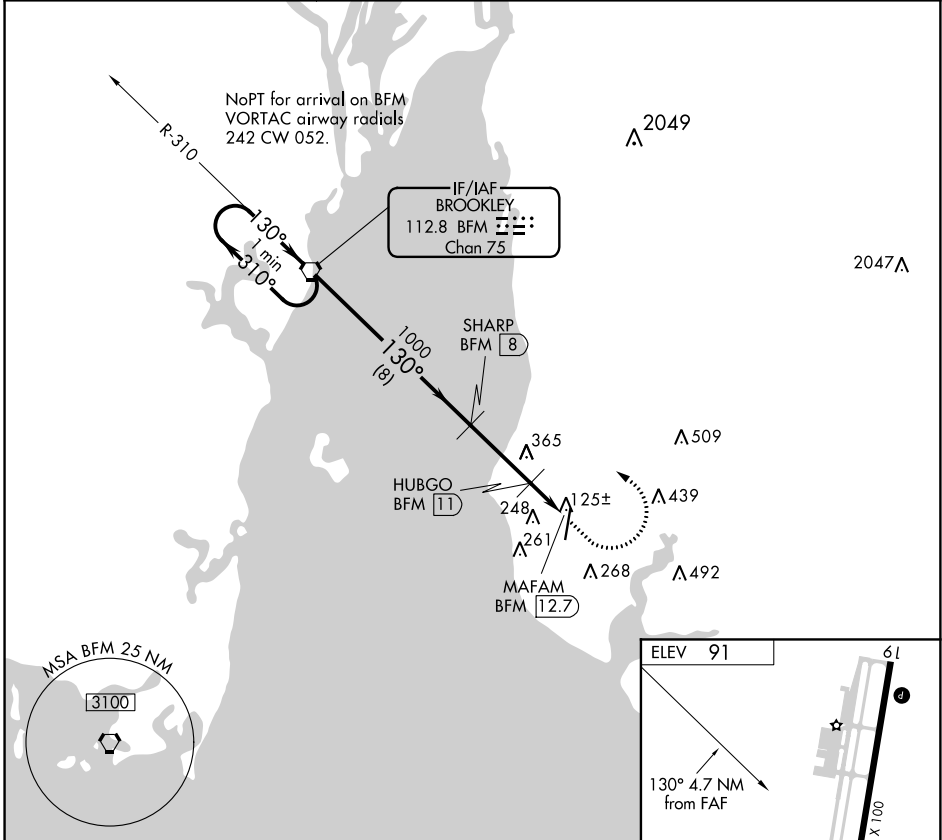
VORTAC BFM 112.8 Chan 75	APP CRS 130°	Rwy Idg TDZE Apt Elev	N/A N/A 91
--	------------------------	-----------------------------	---------------------------------------

VOR/DME-A
H L SONNY CALLAHAN (CQF)

⚠ When local altimeter setting not received, use Mobile Downtown altimeter setting and increase all MDA 60 feet.

MISSED APPROACH: Climb to 2000 then left turn direct BFM Vortac and hold.

AWOS-3PT 118.425	MOBILE APP CON * 118.5 269.3	UNICOM 123.0 (CTAF) 0
----------------------------	--	---------------------------------



CATEGORY	A	B	C	D
CIRCLING	560-1	469 (500-1)	580-1½ 489 (500-1½)	660-2 569 (600-2)

ELEV 91

130° 4.7 NM from FAF

6604 x 100

HIRL Rwy 1-19 0

REIL Rlys 1 and 19 0

SE-4, 07 NOV 2019 to 05 DEC 2019

SE-4, 07 NOV 2019 to 05 DEC 2019

FAIRHOPE, ALABAMA
Amdt 7 05MAY11

30°28'N-87°53'W

H L SONNY CALLAHAN (CQF)
VOR/DME-A