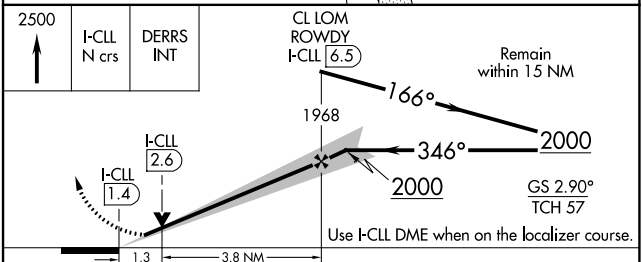
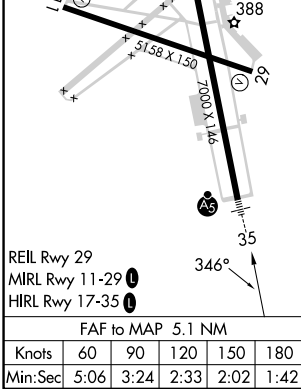
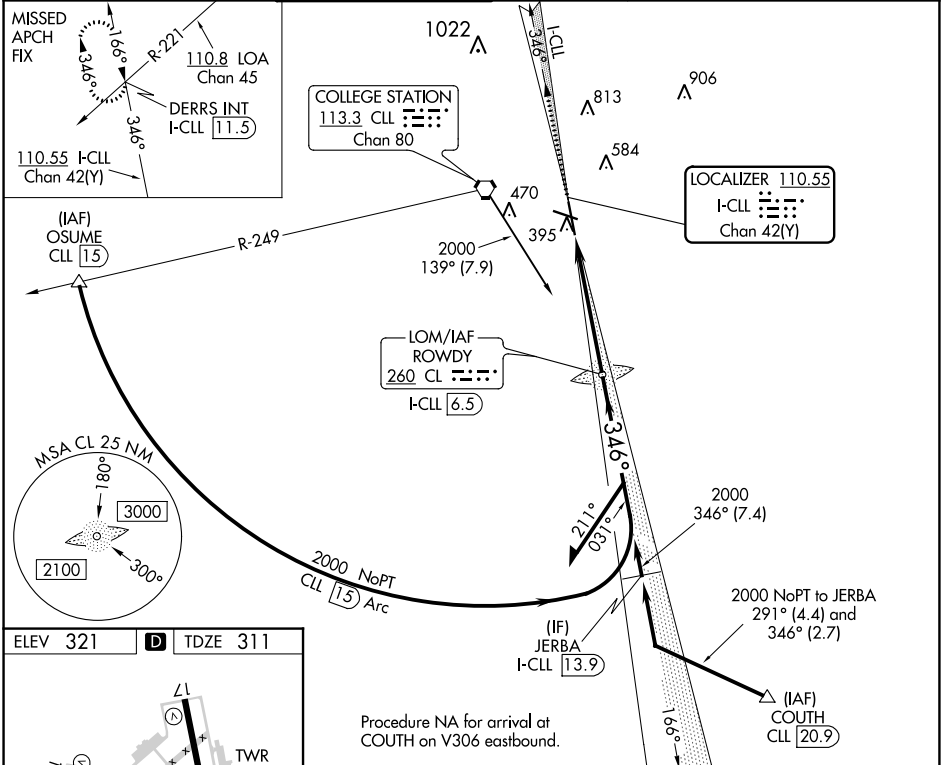


LOC/DME I-CLL 110.55 Chan 42(Y)	APP CRS 346°	Rwy Idg TDZE Apt Elev 6932 311 321
--	------------------------	--

ILS or LOC RWY 35

EASTERWOOD FLD (CLL)

ADF or DME required for procedure entry. ADF or DME required for LOC only.		MALSR 	MISSED APPROACH: Climb to 2500 on I-CLL north course to DERRS INT/I-CLL 11.5 DME and hold.					
<p> For inop ALS, increase S-ILS 35 Cat E visibility to 3/4 SM and S-LOC 35 Cat E visibility to 1 1/8 SM. ILS glideslope unusable for coupled approaches below 1050 feet MSL.</p> <p></p>		ATIS 126.85	HOUSTON APP CON 134.3 360.85	EASTERWOOD TOWER ★ 118.5 (CTAF) 284.7	GND CON 128.7 284.7	CLNC DEL 128.7	CLNC DEL 120.4 (when twr closed)	UNICOM 122.95



CATEGORY	A	B	C	D	E
S-ILS 35		511-1/2	200 (200-1/2)		
S-LOC 35	760-1/2	449 (500-1/2)		760-7/8	449 (500-7/8)
CIRCLING	860-1 539 (600-1)	880-1 559 (600-1)	1000-2 679 (700-2)	1180-2 3/4 859 (900-2 3/4)	1180-3 859 (900-3)

SC-5, 22 FEB 2024 to 21 MAR 2024

SC-5, 22 FEB 2024 to 21 MAR 2024

WAAS CH 65632 W11A	APP CRS 106°	Rwy Idg TDZE Apt Elev	5158 319 321
--	------------------------	-----------------------------	---

RNAV (GPS) RWY 11

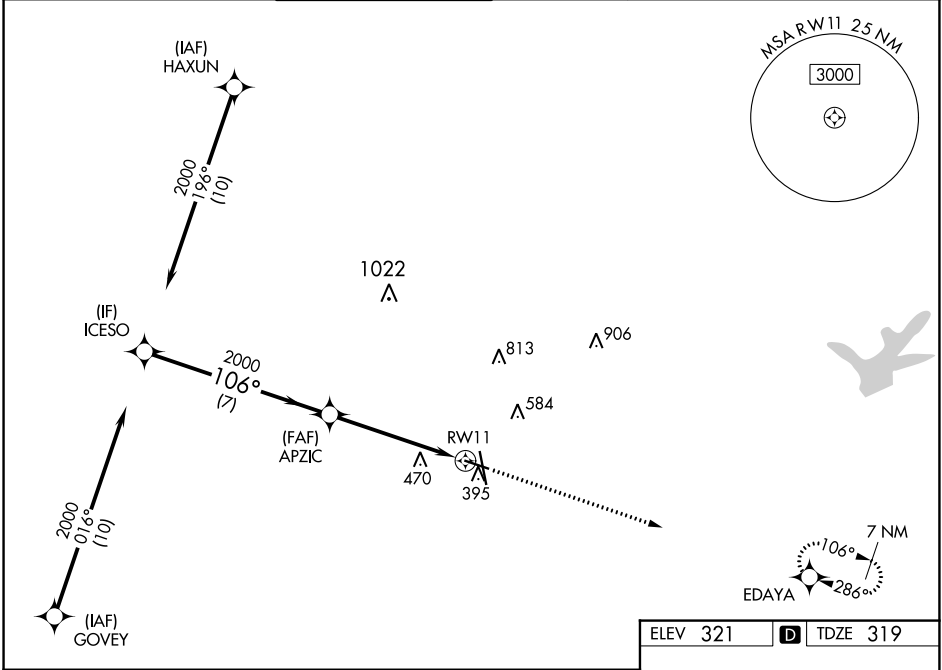
EASTERWOOD FLD (CLL)

RNP APCH.

⚠ For uncompensated Baro-VNAV systems, LNAV/VNAV NA below -3°C or above 54°C. Rwy 11 helicopter visibility reduction below 3/4 SM NA.

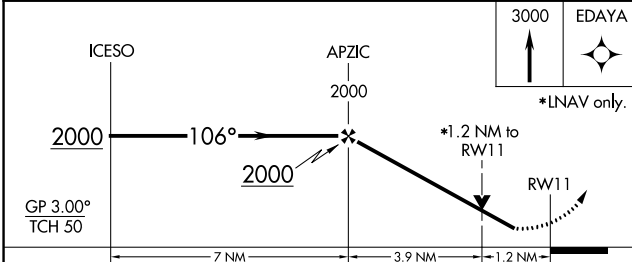
MISSED APPROACH: Climb to 3000 direct EDAYA and hold.

ATIS 126.85	HOUSTON APP CON 134.3 360.85	EASTERWOOD TOWER ★ 118.5 (CTAF) 0 284.7	GND CON 128.7 284.7	CLNC DEL 128.7	CLNC DEL 120.4 (when twr closed)	UNICOM 122.95
-----------------------	--	---	-------------------------------	--------------------------	---	-------------------------



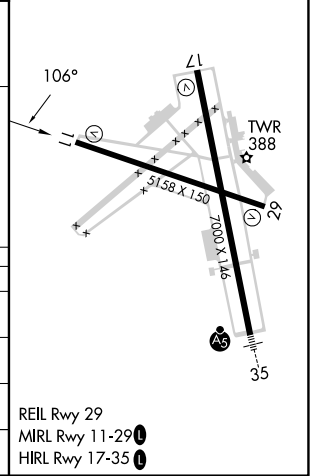
SC-5, 22 FEB 2024 to 21 MAR 2024

SC-5, 22 FEB 2024 to 21 MAR 2024



ELEV 321	D TDZE 319
----------	-------------------

CATEGORY	A	B	C	D	E
LPV DA	569-3/4		250 (300-3/4)		
LNAV/VNAV DA	641-1		322 (400-1)		
LNAV MDA	740-1	421 (500-1)	740-1 1/4	421 (500-1 1/4)	
C CIRCLING	860-1 539 (600-1)	880-1 559 (600-1)	1000-2 679 (700-2)	1180-2 3/4 859 (900-2 3/4)	1180-3 859 (900-3)



WAAS CH 78322 W17A	APP CRS 166°	Rwy Idg TDZE Apt Elev	7000 321 321
--	------------------------	-----------------------------	---

RNAV (GPS) RWY 17

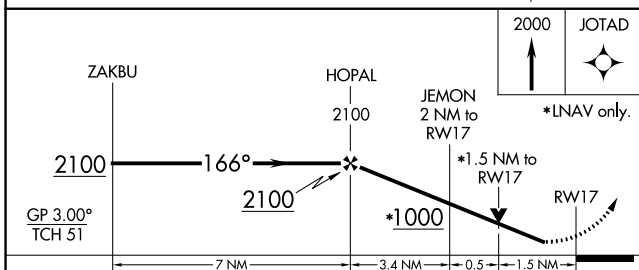
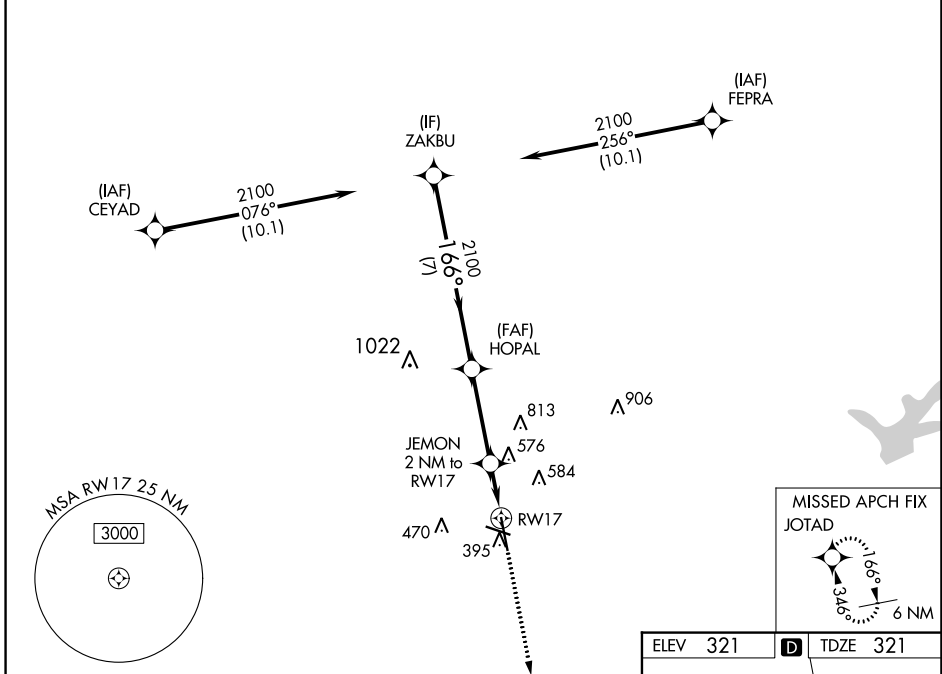
EASTERWOOD FLD (CLL)

RNP APCH.

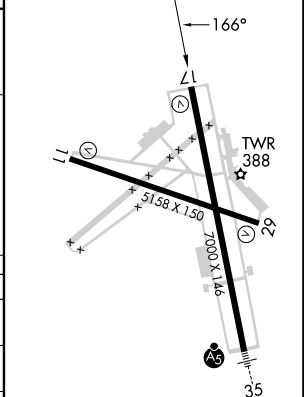
⚠ For uncompensated Baro-VNAV systems, LNAV/VNAV NA below -3°C or above 54°C. Rwy 17 helicopter visibility reduction below 3/4 SM NA.

MISSED APPROACH: Climb to 2000 direct JOTAD and hold.

ATIS 126.85	HOUSTON APP CON 134.3 360.85	EASTERWOOD TOWER ★ 118.5 (CTAF) 0 284.7	GND CON 128.7 284.7	CLNC DEL 128.7	CLNC DEL 120.4 (when twr closed)	UNICOM 122.95
-----------------------	--	---	-------------------------------	--------------------------	---	-------------------------



ELEV 321	D TDZE 321
----------	-------------------



	A	B	C	D	E
LPV DA	571-3/4		250 (300-3/4)		
LNAV/VNAV DA	637-1		316 (400-1)		
LNAV MDA	840-1 519 (600-1)		840-1 3/8		519 (600-1 3/8)
C CIRCLING	860-1 539 (600-1)	880-1 559 (600-1)	1000-2 679 (700-2)	1180-2 3/4 859 (900-2 3/4)	1180-3 859 (900-3)

REIL Rwy 29
MIRL Rwy 11-29 **Ⓢ**
HIRL Rwy 17-35 **Ⓢ**

SC-5, 22 FEB 2024 to 21 MAR 2024

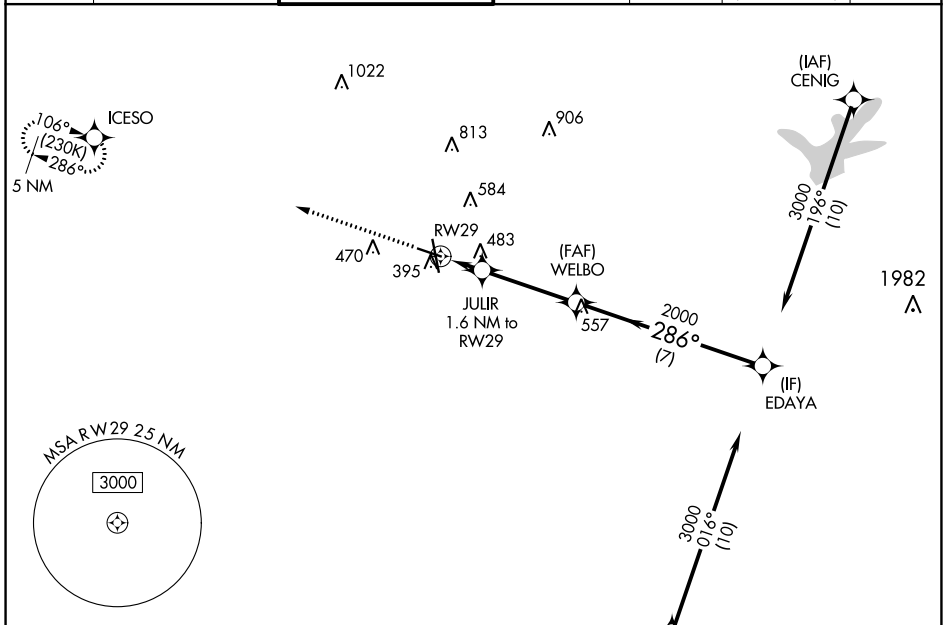
SC-5, 22 FEB 2024 to 21 MAR 2024

WAAS CH 87022 W29A	APP CRS 286°	Rwy Idg TDZE 314 Apt Elev 321
--	------------------------	---

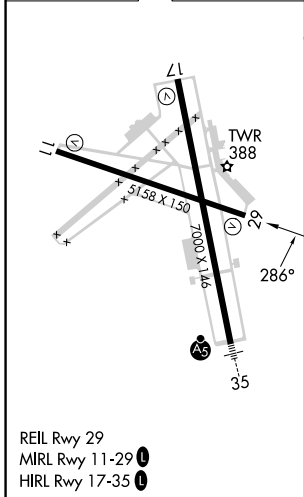
RNAV (GPS) RWY 29

EASTERWOOD FLD (CLL)

RNP APCH.			MISSED APPROACH: Climb to 2000 direct ICESO and hold.			
⚠ Baro-VNAV NA when using Caldwell altimeter setting. ⚠ For uncompensated Baro-VNAV systems, LNAV/VNAV NA below -3°C or above 54°C. Rwy 29 helicopter visibility reduction below ¾ SM NA.						
ATIS 126.85	HOUSTON APP CON 134.3 360.85	EASTERWOOD TOWER ★ 118.5 (CTAF) 0 284.7	GND CON 128.7 284.7	CLNC DEL 128.7	CLNC DEL 120.4 (when twr closed)	UNICOM 122.95



ELEV 321	D	TDZE 314
-----------------	----------	-----------------



2000	↑	ICESO	✧			
*LNAV only.						
		JULIR 1.6 NM to RW29	WELBO 2000	EDAYA 3000	GP 3.00° TCH 54	
		RW29	860*	2000		
		1.6 NM	3.5 NM	7 NM		
CATEGORY	A	B	C	D	E	
LPV DA	564-¾		250 (300-¾)			
LNAV/VNAV DA	762-1⅓		448 (500-1⅓)			
LNAV MDA	740-1		426 (500-1)		740-1¼ 426 (500-1¼)	
CIRCLING	860-1 539 (600-1)		880-1 559 (600-1)		1000-2 679 (700-2)	
	1180-2¾ 859 (900-2¾)		1180-3 859 (900-3)			

SC-5, 22 FEB 2024 to 21 MAR 2024

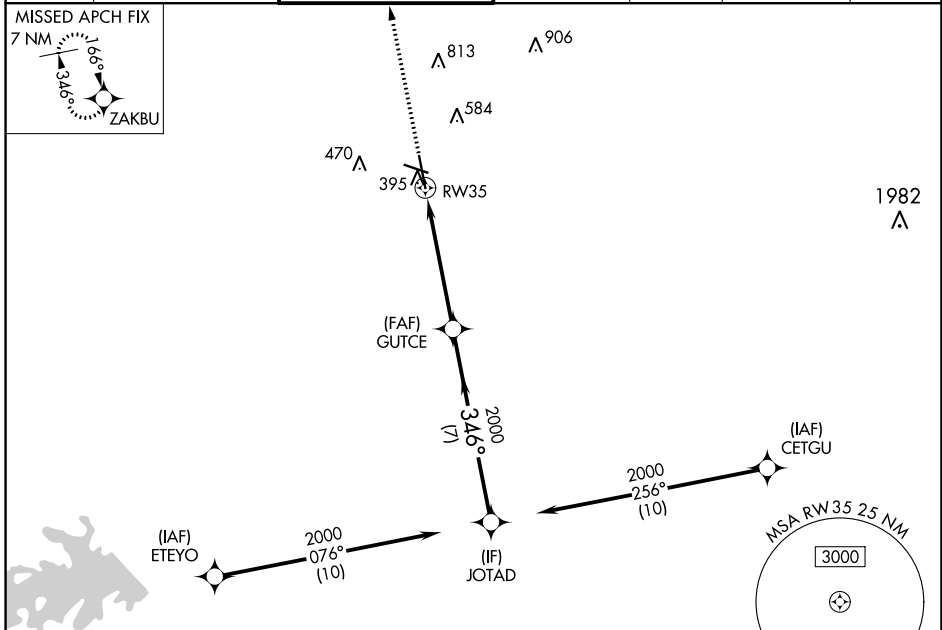
SC-5, 22 FEB 2024 to 21 MAR 2024

WAAS CH 63122 W35A	APP CRS 346°	Rwy Idg 6932 TDZE 311 Apt Elev 321
--	------------------------	---

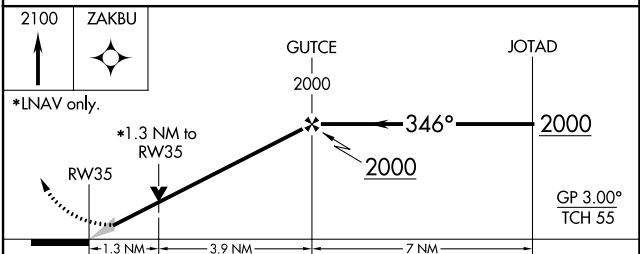
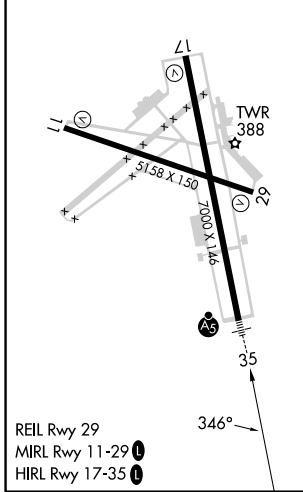
RNAV (GPS) RWY 35

EASTERWOOD FLD (CLL)

RNP APCH.		EASTERWOOD TOWER ★		GND CON	CLNC DEL	CLNC DEL	UNICOM
<p>▼ For uncompensated Baro-VNAV systems, LNAV/VNAV NA below -3°C or above 54°C. For inop ALS, increase LPV Cat E and LNAV/VNAV all Cats visibility to ¾ SM, increase LNAV Cat E visibility to 1¾ SM.</p>		<p>118.5 (CTAF) 0 284.7</p>		<p>128.7 284.7</p>	<p>128.7</p>	<p>120.4 (when twr closed)</p>	<p>122.95</p>



ELEV 321	D	TDZE 311
----------	----------	----------



CATEGORY	A	B	C	D	E
LPV DA		511-½	200 (200-½)		
LNAV/VNAV DA		563-½	252 (300-½)		
LNAV MDA	760-½	449 (500-½)	760-⅞	449 (500-⅞)	
C CIRCLING	860-1 539 (600-1)	880-1 559 (600-1)	1000-2 679 (700-2)	1180-2¾ 859 (900-2¾)	1180-3 859 (900-3)

SC-5, 22 FEB 2024 to 21 MAR 2024

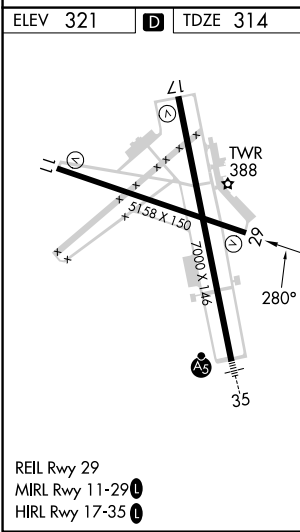
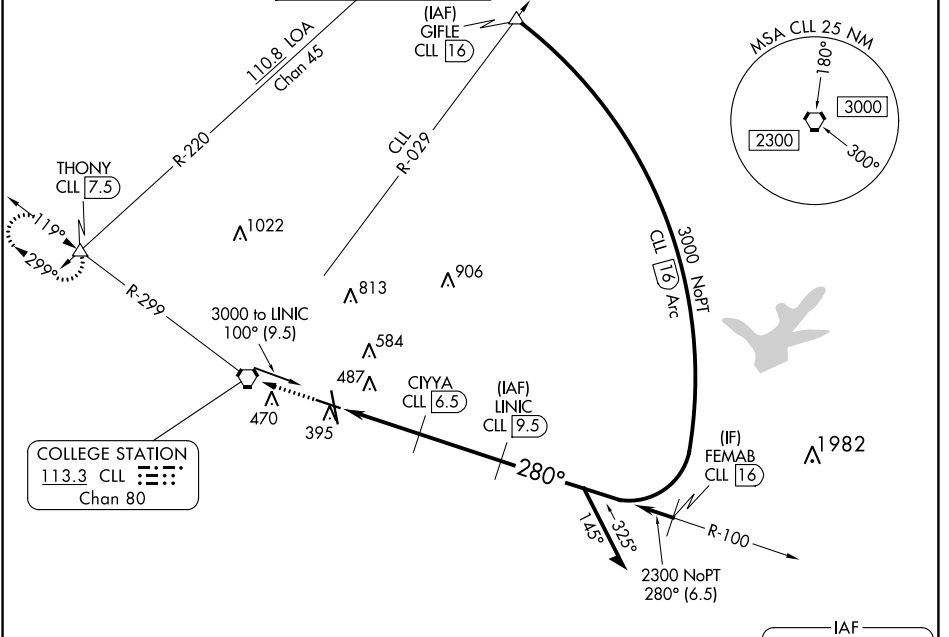
SC-5, 22 FEB 2024 to 21 MAR 2024

VORTAC CLL 113.3 Chan 80	APP CRS 280°	Rwy Idg 5158 TDZE 314 Apt Elev 321
--	------------------------	---

VOR RWY 29

EASTERWOOD FLD (CLL)

DME required for procedure entry. DME required.		MISSED APPROACH: Climb to 2500 direct CLL VORTAC then on CLL VORTAC R-299 to THONY INT/CLL 7.5 DME and hold.						
▼ ▲ Rwy 29 helicopter visibility reduction below ¾ SM NA.		ATIS 126.85	HOUSTON APP CON 134.3 360.85	EASTERWOOD TOWER ★ 118.5 (CTAF) 284.7	GND CON 128.7 284.7	CLNC DEL 128.7	CLNC DEL 120.4 (when twr closed)	UNICOM 122.95



ELEV 321	D	TDZE 314		
2500	CLL	THONY	LINIC	Remain within 10 NM
↑	CLL R-299	△	CLL 9.5	
	CLL 3.5	CIYYA CLL 6.5	3000 NoPT	
			338° (1.4 A)	
			100°	
			280°	
			3000	
			1320	
			2300	
			3.00° TCH 54	
			1.4 NM	1.7 NM
			3 NM	
CATEGORY	A	B	C	D
S-29	800-1	486 (500-1)	800-1 3/8	486 (500-1 3/8)
CIRCLING	860-1	880-1	1000-2	1180-2 3/4
	539 (600-1)	559 (600-1)	679 (700-2)	859 (900-2 3/4)

SC-5, 22 FEB 2024 to 21 MAR 2024

SC-5, 22 FEB 2024 to 21 MAR 2024

VORTAC CLL 113.3 Chan 80	APP CRS 100°	Rwy Idg TDZE Apt Elev	5158 319 321
--	------------------------	-----------------------------	---

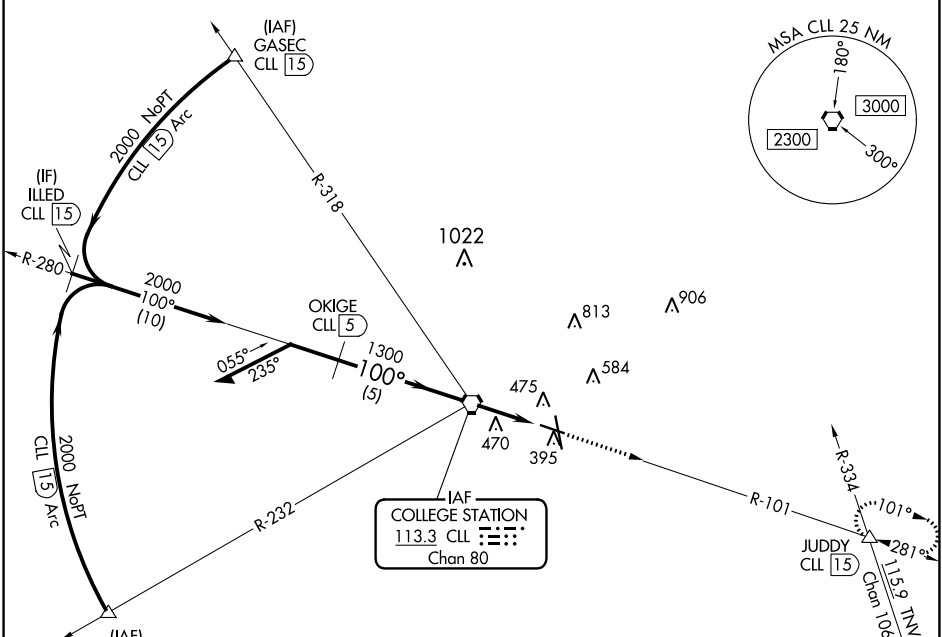
VOR or TACAN Rwy 11

EASTERWOOD FLD (CLL)

DME required for procedure entry.
 Procedure turn NA for Cat E.
 Rwy 11 helicopter visibility reduction below 3/4 SM NA.

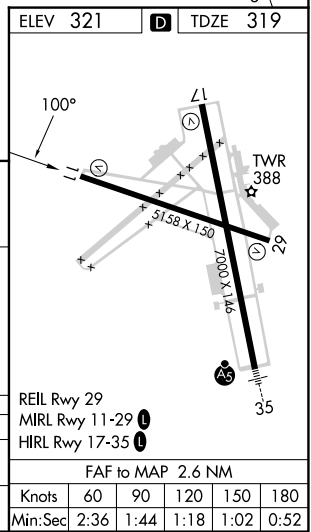
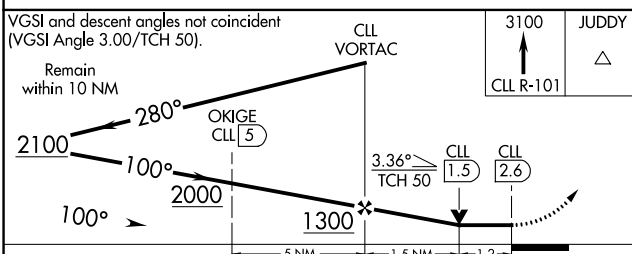
MISSED APPROACH: Climb to 3100 on CLL VORTAC
 R-101 to JUDDY INT/CLL 1.5 DME and hold.

ATIS 126.85	HOUSTON APP CON 134.3 360.85	EASTERWOOD TOWER ★ 118.5 (CTAF) 284.7	GND CON 128.7 284.7	CLNC DEL 128.7	CLNC DEL 120.4 (when twr closed)	UNICOM 122.95
-----------------------	--	---	-------------------------------	--------------------------	---	-------------------------



SC-5, 22 FEB 2024 to 21 MAR 2024

SC-5, 22 FEB 2024 to 21 MAR 2024



CATEGORY	A	B	C	D	E
S-11	740-1	421 (500-1)	740-1¼	421 (500-1¼)	
CIRCLING	860-1 539 (600-1)	880-1 559 (600-1)	1000-2 679 (700-2)	1180-2¾ 859 (900-2¾)	1180-3 859 (900-3)

ELEV 321	TDZE 319
FAF to MAP 2.6 NM	
Knots	60 90 120 150 180
Min:Sec	2:36 1:44 1:18 1:02 0:52