

WAAS CH 93841 W25A	APP CRS 254°	Rwy Idg TDZE Apt Elev	5606 6198 6198
--	------------------------	-----------------------------	---

RNAV (GPS) RWY 25

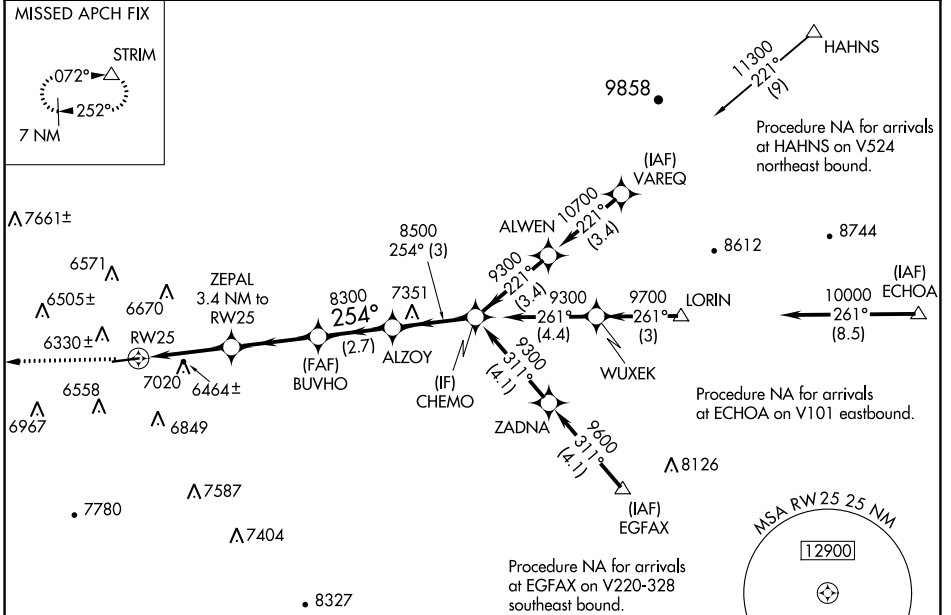
CRAIG-MOFFAT (CAG)

RNP APCH. MISSED APPROACH: Climbing right turn to 10000 direct STRIM and hold, continue climb-in-hold to 10000.

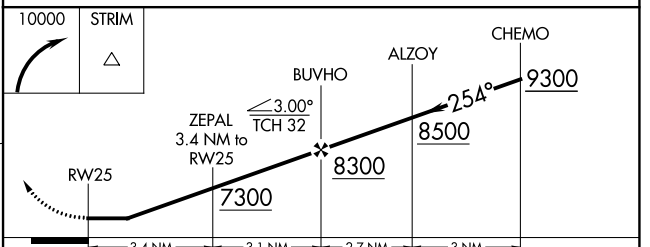
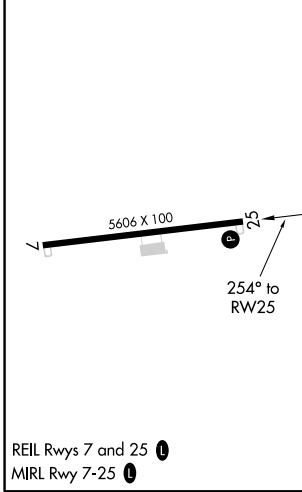
⚠ Circling NA for Cat D south of Rwy 7-25. Straight-in and Circling Rwy 25 NA at night. Rwy 25 helicopter visibility reduction below 1 SM NA.

❄ -31°C

ASOS 135.425	DENVER CENTER 120.475 235.975	UNICOM 122.8 (CTAF) 0
------------------------	---	---------------------------------



ELEV 6198	TDZE 6198
------------------	------------------



CATEGORY	A	B	C	D
LP MDA	6720-1	522 (600-1)	6720-1½	522 (600-1½)
LNAV MDA	7280-1¼ 1082 (1100-1¼)	7280-1½ 1082 (1100-1½)	7280-3	1082 (1100-3)
C CIRCLING	7280-1¼ 1082 (1100-1¼)	7320-1½ 1122 (1300-1½)	7720-3	1522 (1600-3)

SW-1, 03 DEC 2020 to 31 DEC 2020

SW-1, 03 DEC 2020 to 31 DEC 2020

CRAIG, COLORADO

AL-6338 (FAA)

20254

WAAS CH 61341 W07A	APP CRS 074°	Rwy Idg TDZE Apt Elev	5606 6193 6198
--	------------------------	-----------------------------	---

RNAV (GPS) RWY 7

CRAIG-MOFFAT (CAG)

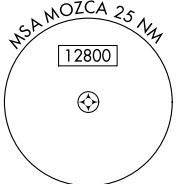
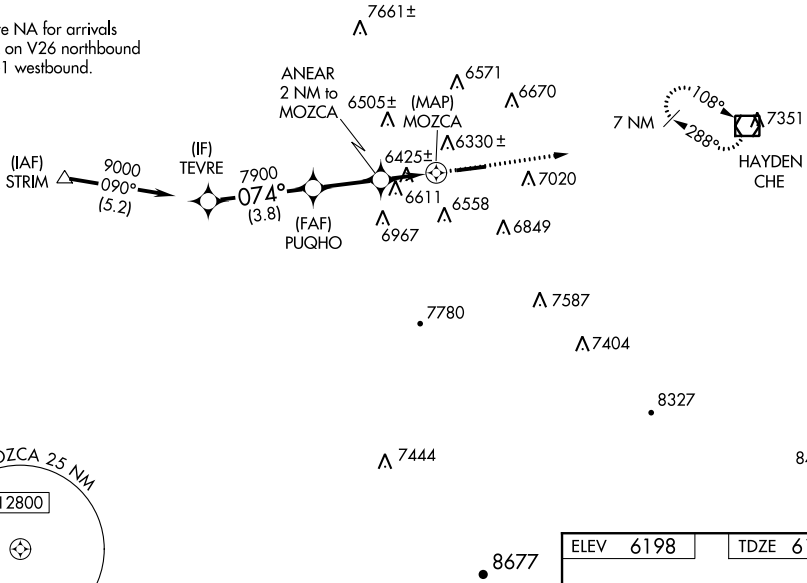
RNP APCH.

Circling NA for Cat D south of Rwy 7-25.
 Rwy 7 helicopter visibility reduction below 3/4 SM NA.
 -31°C
 Circling Rwy 25 NA at night.

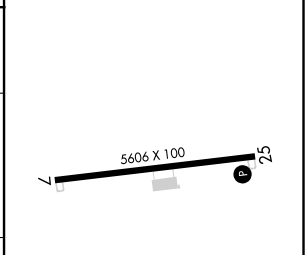
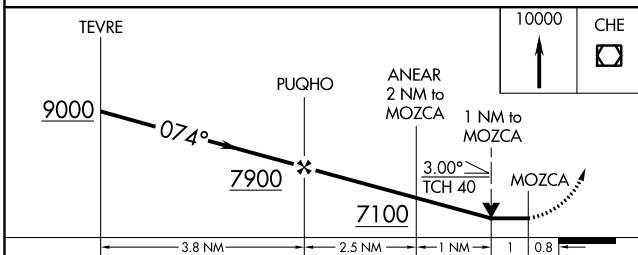
MISSED APPROACH: Climb to 10000 direct CHE VOR/DME and hold, continue climb-in-hold to 10000.

ASOS 135.425	DENVER CENTER 120.475 235.975	UNICOM 122.8 (CTAF)
------------------------	---	-------------------------------

Procedure NA for arrivals at STRIM on V26 northbound and V101 westbound.



ELEV 6198	TDZE 6193
-----------	-----------



CATEGORY	A	B	C	D
LP MDA	6800-1	607 (700-1)	6800-1 3/4	607 (700-1 3/4)
LNNAV MDA	6880-1	687 (700-1)	6880-2	687 (700-2)
CIRCLING	7180-1 1/4 982 (1000-1 1/4)	7320-1 1/2 1122 (1200-1 1/2)	7720-3	1522 (1600-3)

REIL Rwys 7 and 25
 MRL Rwy 7-25

CRAIG, COLORADO
Orig 24MAY18

40°30'N-107°31'W

CRAIG-MOFFAT (CAG) RNAV (GPS) RWY 7

SW-1, 03 DEC 2020 to 31 DEC 2020

SW-1, 03 DEC 2020 to 31 DEC 2020

VOR/DME CHE 115.6 Chan 103	APP CRS 247°	Rwy Idg TDZE Apt Elev	5606 6198 6198
--	------------------------	-----------------------------	---

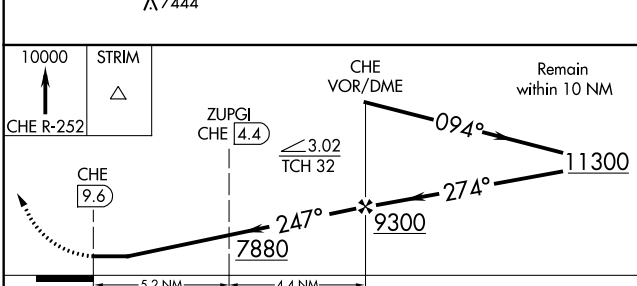
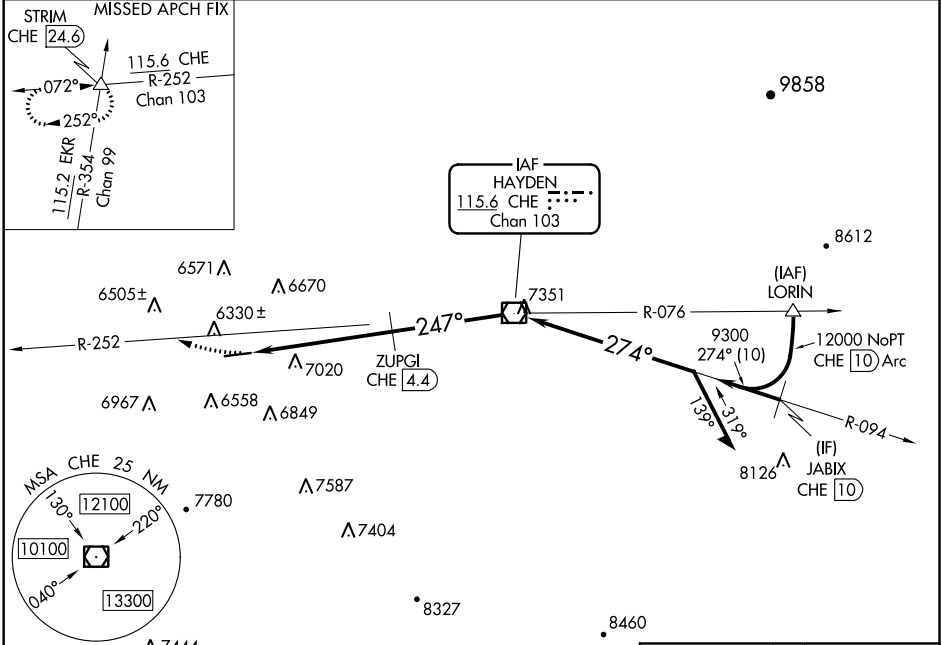
VOR RWY 25

CRAIG-MOFFAT (CAG)

⚠ Rwy 25 helicopter visibility reduction below 1 SM NA.
⚠ Straight-in and Circling to Rwy 25 NA at night.
⚠ -31°C Circling NA for Cat D south of Rwy 7-25.

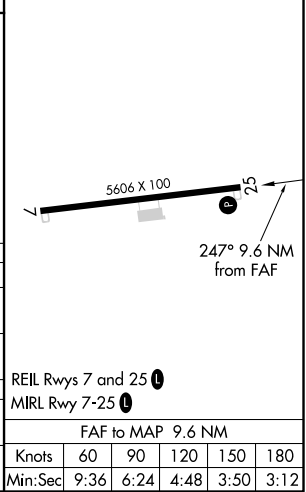
MISSED APPROACH: Climb to 10000 on CHE VOR/DME R-252 to STRIM INT/24.6 DME and hold.

ASOS 135.425	DENVER CENTER 120.475 235.975	UNICOM 122.8 (CTAF) ①
------------------------	---	--



ELEV 6198	TDZE 6198
-----------	-----------

CATEGORY	A	B	C	D
S-25	7880-1¼ 1682 (1700-1¼)	7880-1½ 1682 (1700-1½)	7880-3	1682 (1700-3)
C CIRCLING	7880-1¼ 1682 (1700-1¼)	7880-1½ 1682 (1700-1½)	7880-3	1682 (1700-3)
ZUPIG FIX MINIMUMS				
S-25	7280-1¼ 1082 (1100-1¼)	7280-1½ 1082 (1100-1½)	7280-3	1082 (1100-3)
C CIRCLING	7280-1¼ 1082 (1100-1¼)	7320-1½ 1122 (1200-1½)	7720-3	1522 (1600-3)



SW-1, 03 DEC 2020 to 31 DEC 2020

SW-1, 03 DEC 2020 to 31 DEC 2020