

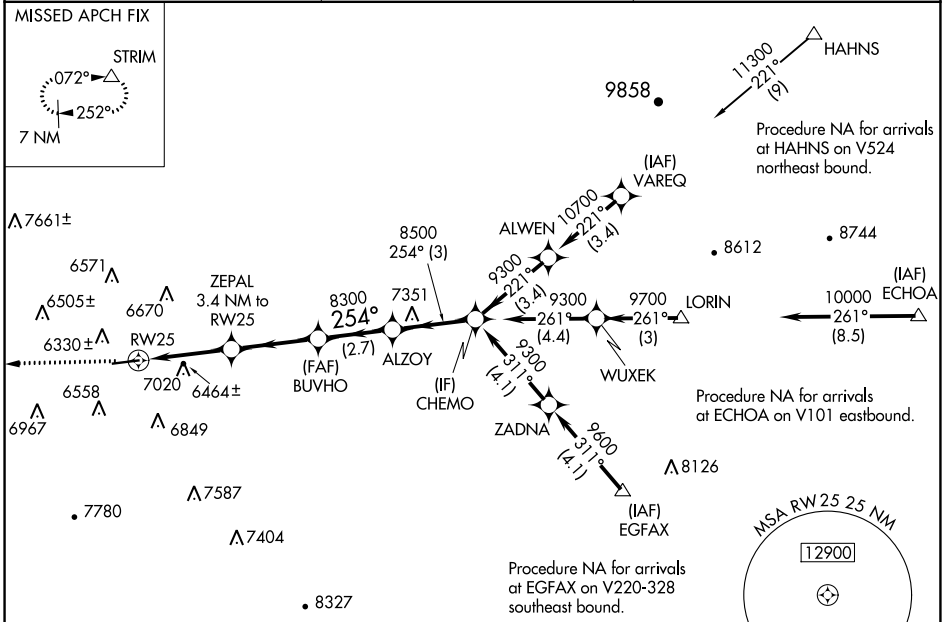
WAAS CH 93841 W25A	APP CRS 254°	Rwy Idg TDZE Apt Elev	5606 6198 6198
--	------------------------	-----------------------------	---

RNAV (GPS) RWY 25

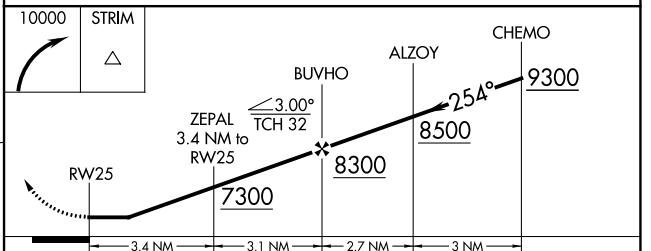
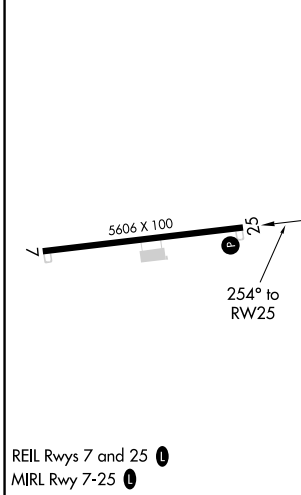
CRAIG-MOFFAT (CAG)

RNP APCH.	<p>⚠ Circling NA for Cat D south of Rwy 7-25. Straight-in and Circling Rwy 25 NA at night. Rwy 25 helicopter visibility reduction below 1 SM NA.</p> <p>❄ -31°C</p>	<p>MISSED APPROACH: Climbing right turn to 10000 direct STRIM and hold, continue climb-in-hold to 10000.</p>
-----------	---	--

ASOS 135.425	DENVER CENTER 120.475 235.975	UNICOM 122.8 (CTAF) 0
------------------------	---	---------------------------------



ELEV 6198	TDZE 6198
------------------	------------------



CATEGORY	A	B	C	D
LP MDA	6720-1	522 (600-1)	6720-1½	522 (600-1½)
LNAV MDA	7280-1¼ 1082 (1100-1¼)	7280-1½ 1082 (1100-1½)	7280-3	1082 (1100-3)
<input checked="" type="checkbox"/> CIRCLING	7280-1¼ 1082 (1100-1¼)	7320-1½ 1122 (1300-1½)	7720-3	1522 (1600-3)

WAAS CH 61341 W07A	APP CRS 074°	Rwy Idg TDZE Apt Elev	5606 6193 6198
--	------------------------	-----------------------------	---

RNAV (GPS) RWY 7

CRAIG-MOFFAT (CAG)

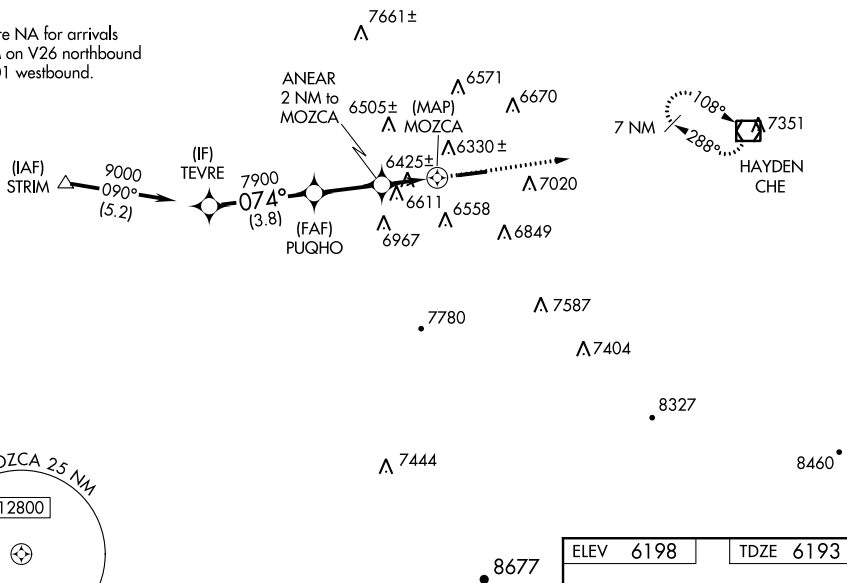
RNP APCH.

⚠ Circling NA for Cat D south of Rwy 7-25.
⚠ Rwy 7 helicopter visibility reduction below ¾ SM NA.
⚠ -31°C
 Circling Rwy 25 NA at night.

MISSED APPROACH: Climb to 10000 direct CHE VOR/DME and hold, continue climb-in-hold to 10000.

ASOS 135.425	DENVER CENTER 120.475 235.975	UNICOM 122.8 (CTAF)
------------------------	---	-------------------------------

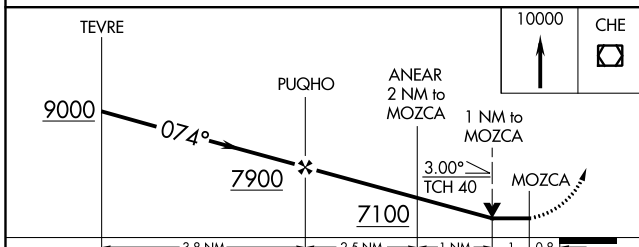
Procedure NA for arrivals at STRIM on V26 northbound and V101 westbound.



SW-1, 03 DEC 2020 to 31 DEC 2020

SW-1, 03 DEC 2020 to 31 DEC 2020

ELEV 6198	TDZE 6193
-----------	-----------



CATEGORY	A	B	C	D
LP MDA	6800-1	607 (700-1)	6800-1¾	607 (700-1¾)
LNNAV MDA	6880-1	687 (700-1)	6880-2	687 (700-2)
C CIRCLING	7180-1¼ 982 (1000-1¼)	7320-1½ 1122 (1200-1½)	7720-3	1522 (1600-3)

REIL Rwys 7 and 25
MIRL Rwy 7-25

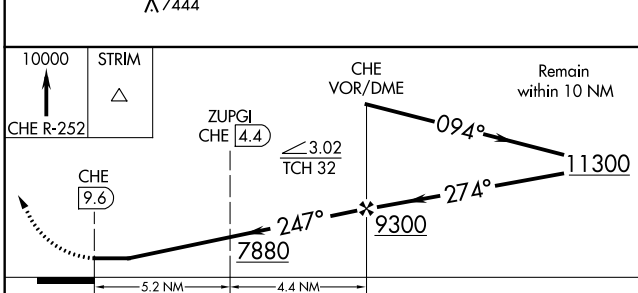
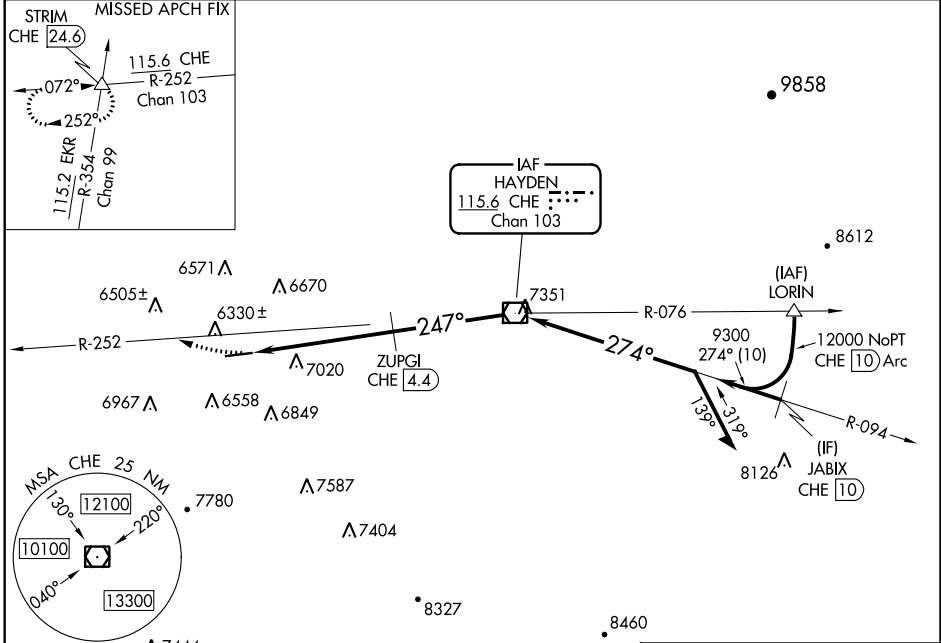
VOR/DME CHE 115.6 Chan 103	APP CRS 247°	Rwy Idg TDZE 6198 Apt Elev 6198
--	------------------------	---

VOR RWY 25

CRAIG-MOFFAT (CAG)

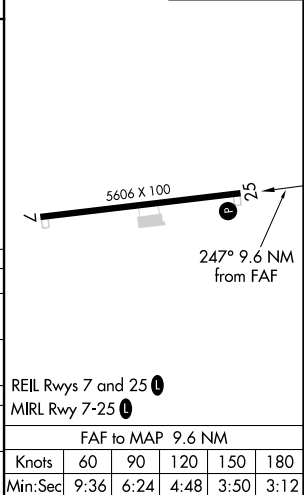
⚠ Rwy 25 helicopter visibility reduction below 1 SM NA. Straight-in and Circling to Rwy 25 NA at night.
⚠ -31°C Circling NA for Cat D south of Rwy 7-25.
 MISSED APPROACH: Climb to 10000 on CHE VOR/DME R-252 to STRIM INT/24.6 DME and hold.

ASOS 135.425	DENVER CENTER 120.475 235.975	UNICOM 122.8 (CTAF)
------------------------	---	-------------------------------



ELEV 6198	TDZE 6198
-----------	-----------

CATEGORY	A	B	C	D
S-25	7880-1¼ 1682 (1700-1¼)	7880-1½ 1682 (1700-1½)	7880-3	1682 (1700-3)
C CIRCLING	7880-1¼ 1682 (1700-1¼)	7880-1½ 1682 (1700-1½)	7880-3	1682 (1700-3)
ZUPIG FIX MINIMUMS				
S-25	7280-1¼ 1082 (1100-1¼)	7280-1½ 1082 (1100-1½)	7280-3	1082 (1100-3)
C CIRCLING	7280-1¼ 1082 (1100-1¼)	7320-1½ 1122 (1200-1½)	7720-3	1522 (1600-3)



SW-1, 03 DEC 2020 to 31 DEC 2020

SW-1, 03 DEC 2020 to 31 DEC 2020

INSTRUMENT APPROACH PROCEDURE CHARTS

A IFR ALTERNATE AIRPORT MINIMUMS

Standard alternate minimums for non-precision approaches and approaches with vertical guidance [NDB, VOR, LOC, TACAN, LDA, SDF, VOR/DME, ASR, RNAV (GPS) or RNAV (RNP)] are 800-2. Standard alternate minimums for precision approaches (ILS, PAR, or GLS) are 600-2. Airports within this geographical area that require alternate minimums other than standard or alternate minimums with restrictions are listed below. NA - means alternate minimums are not authorized due to unmonitored facility, absence of weather reporting service, or lack of adequate navigation coverage. Civil pilots see FAR 91. IFR Alternate Minimums: Ceiling and Visibility Minimums not applicable to USA/USN/USAF. Pilots must review the IFR Alternate Minimums Notes for alternate airfield suitability.

NAME ALTERNATE MINIMUMS

AKRON, CO

COLORADO PLAINS

RGNL (AKO).....RNAV (GPS) Rwy 11
RNAV (GPS) Rwy 29

Category D 800-2½.

ALAMOGORDO, NM

ALAMOGORDO-WHITE SANDS

RGNL (ALM).....RNAV (GPS) Rwy 4
VOR Rwy 4

Category D, 1200-3.

ALAMOSA, CO

SAN LUIS VALLEY RGNL/
BERGMAN FIELD (ALS).....RNAV (GPS) Rwy 20

NA when local weather not available.

ALBUQUERQUE, NM

ALBUQUERQUE INTL

SUNPORT (ABQ).....ILS or LOC Rwy 3¹
RADAR-1²
RNAV (GPS) Y Rwy 3³
RNAV (GPS) Y Rwy 8³
VOR Rwy 8⁴

¹ILS, LOC, Category D, 1200-3.

²Categories D, E, 1200-3.

³Category D, 1200-3.

⁴Categories A, B, 1100-2; Category C, 1100-3;
Category D, 1200-3; Category E, 2200-3.

DOUBLE

EAGLE II (AEG).....RNAV (GPS) Rwy 4
RNAV (GPS) Rwy 22

NA when local weather not available.

Category D, 900-2½.

ARTESIA, NM

ARTESIA

MUNI (ATS).....NDB Rwy 13¹
NDB Rwy 31²
RNAV (GPS) Rwy 13²
RNAV (GPS) Rwy 22²
RNAV (GPS) Rwy 31²

¹Categories C, D, 800-2½.

²Category D, 800-2½.

NAME ALTERNATE MINIMUMS

ASPEN, CO

ASPEN-PITKIN COUNTY/SARDY

FIELD (ASE).....RNAV (GPS)-F
Categories A, B, 2400-2; Category C, 2400-3.

BURLINGTON, CO

KIT CARSON

COUNTY (ITR).....NDB Rwy 15
Category D, 800-2½.

CARLSBAD, NM

CAVERN CITY

AIR TRML (CNM).....ILS Rwy 3⁴
RNAV (GPS) Rwy 3¹
RNAV (GPS) Rwy 14R²
RNAV (GPS) Rwy 21²
RNAV (GPS) Rwy 32L²³
VOR Rwy 32L²³

¹Categories A, B, 900-2; Category C, 900-2½;

Category D, 1000-3.

²Category D, 1000-3.

³NA when local weather not available.

⁴ILS, Categories A, B, C, 700-2; Category D,
1000-3; LOC, Category D, 1000-3.

CLAYTON, NM

CLAYTON MUNI

AIRPARK (CAO).....RNAV (GPS) Rwy 2
RNAV (GPS) Rwy 20

NA when local weather not available.

CLOVIS, NM

CLOVIS MUNI (CVN).....RNAV (GPS) Rwy 4
RNAV (GPS) Rwy 22
VOR Rwy 22

NA when local weather not available.

03 DEC 2020 to 31 DEC 2020

03 DEC 2020 to 31 DEC 2020

NAME ALTERNATE MINIMUMS

COLORADO SPRINGS, CO

CITY OF COLORADO SPRINGS
MUNI (COS).....**ILS or LOC Rwy 17L**⁴⁶
ILS or LOC Rwy 35L²
ILS or LOC Rwy 35R²
NDB Rwy 35L¹
RNAV (GPS) Rwy 31¹
RNAV (GPS) Y Rwy 17L⁵
RNAV (GPS) Y Rwy 17R¹
RNAV (GPS) Y Rwy 35L¹
RNAV (GPS) Y Rwy 35R¹
RNAV (RNP) Z Rwy 17R³

- ¹Category C, 900-2½; Category D, 1100-3.
- ²ILS, Category B, 700-2; Category C, 900-2½; Category D, 1100-3; LOC, Category C, 900-2½; Category D, 1100-3.
- ³Categories A, B, C, D, 800-2½.
- ⁴LOC, Categories A, B, 1400-2; Categories C, D, 1400-3.
- ⁵Categories A, B, 900-2; Category C, 900-2½; Category D, 1100-3.
- ⁶NA when local weather not available.

CORTEZ, CO

CORTEZ
MUNI (CEZ).....**RNAV (GPS) Rwy 3**¹²
RNAV (GPS) Y Rwy 21²
RNAV (GPS) Z Rwy 21³
VOR Rwy 21⁴

- ¹NA when local weather not available.
- ²Category D, 900-3.
- ³Categories A, B, 1300-2; Categories C, D, 1300-3.
- ⁴Category C, 800-2½.

CRAIG, CO

CRAIG-MOFFAT (CAG).....**RNAV (GPS) Rwy 7**¹
RNAV (GPS) Rwy 25²
VOR Rwy 25³

- ¹Category A, 1000-2; Category B, 1200-2; Categories C, D, 1600-3.
- ²Category A, 1100-2; Category B, 1200-2; Categories C, D, 1600-3.
- ³Categories A, B, 1700-2; Categories C, D, 1700-3.

DEL NORTE, CO

ASTRONAUT KENT
ROMINGER (RCV).....**RNAV (GPS) Rwy 24**
Category B, 900-2.

DELTA, CO

BLAKE
FIELD (AJZ).....**RNAV (GPS) Rwy 3**
Category B, 1200-2; Category C, 1500-3.

NAME ALTERNATE MINIMUMS

DEMING, NM

DEMING MUNI (DMN).....**RNAV (GPS)-A**¹
RNAV (GPS) Rwy 4²
RNAV (GPS) Rwy 8¹
RNAV (GPS) Rwy 22¹
VOR Rwy 26

- NA when local weather not available.
- ¹Category D, 800-2½.
- ²Categories A, B, C, D, 800-2½.

DENVER, CO

CENTENNIAL
(APA).....**ILS or LOC Rwy 35R**¹
RNAV (GPS) Rwy 17L²
RNAV (GPS) Rwy 35R³

- ¹LOC, Category C, 900-2½; Category D, 900-2½.
- ²Category C, 900-2½; Category D, 1100-3.
- ³Category C, 900-2½; Category D, 900-2½.

COLORADO AIR AND SPACE

PORT (CFO).....**ILS or LOC Rwy 17**¹²³
ILS or LOC Rwy 26¹³
ILS or LOC Rwy 35¹²
RNAV (GPS) Rwy 17¹⁴
RNAV (GPS) Rwy 26¹⁴
RNAV (GPS) Rwy 35¹⁴

- ¹NA when local weather not available.
- ²NA when control tower closed.
- ³LOC, Category D, 800-2½.
- ⁴Category D, 800-2½.

ROCKY MOUNTAIN

METROPOLITAN (BJC).....**RNAV (GPS) Rwy 12L**
NA when local weather not available.
Category D, 800-2½.

DURANGO, CO

DURANGO-LA PLATA
COUNTY (DRO).....**RNAV (GPS) Rwy 3**
RNAV (GPS) Rwy 21
Category C, 900-2½; Category D, 1500-3.

EAGLE, CO

EAGLE COUNTY
RGNL (EGE).....**LDA Rwy 25**¹
RNAV (GPS)-D²
¹LDA/GS, 1800-3; LDA, 2100-2½.
²Categories A, B, 2700-2; Categories C, D, 2700-3.

FARMINGTON, NM

FOUR CORNERS
RGNL (FMN).....**ILS or LOC Rwy 25**¹²
RNAV (GPS) Rwy 5³
RNAV (GPS) Rwy 7³
RNAV (GPS) Rwy 23⁴
RNAV (GPS) Rwy 25³

- ¹NA when control tower closed.
- ²ILS, Categories B, C, D, 700-2.
- ³NA when local weather not available.
- ⁴Category D, 800-2½.

03 DEC 2020 to 31 DEC 2020

03 DEC 2020 to 31 DEC 2020

NAME ALTERNATE MINIMUMS

FORT COLLINS/LOVELAND, CO
NORTHERN COLORADO
RGNL (FNL).....**RNAV (GPS) Rwy 15**
RNAV (GPS) Rwy 33¹
VOR-A

NA when local weather not available.
¹Category D, 800-2 $\frac{1}{4}$.

FORT MORGAN, CO
FORT MORGAN
MUNI (FMM).....**RNAV (GPS) Rwy 14¹**
RNAV (GPS) Rwy 32¹²

¹Category D, 800-2 $\frac{1}{4}$.
²NA when local weather not available.

GALLUP, NM
GALLUP
MUNI (GUP).....**RNAV (GPS) Rwy 6¹²**
RNAV (GPS) Rwy 24³
VOR Rwy 6²⁴

¹Categories A, B, 900-2; Category C, 900-2 $\frac{1}{2}$;
Category D, 900-3.
²NA when local weather not available.
³Categories A, B, 900-2; Category C, 900-2 $\frac{3}{4}$;
Category D, 900-3.
⁴Categories A, B, 1000-2;
Categories C, D, 1000-3.

GRAND JUNCTION, CO
GRAND JUNCTION
RGNL (GJT).....**ILS or LOC Rwy 11¹²**
LDA/DME Rwy 29³
RNAV (GPS) Rwy 29⁴
RNAV (GPS) Y Rwy 11³

¹NA when control tower closed.
²LOC, Category D, 800-2 $\frac{1}{4}$.
³Category D, 800-2 $\frac{1}{4}$.
⁴Category D, 800-2 $\frac{1}{2}$.

GREELEY, CO
GREELEY-WELD
COUNTY (GXY).....**ILS or LOC Rwy 35¹**
RNAV (GPS) Rwy 10²
RNAV (GPS) Rwy 17²
RNAV (GPS) Rwy 28²
RNAV (GPS) Rwy 35²
VOR-A²

NA when local weather not available.
¹ILS, Category D, 700-2 $\frac{1}{4}$; LOC Category D,
800-2 $\frac{1}{4}$.
²Category D, 800-2 $\frac{1}{4}$.

NAME ALTERNATE MINIMUMS

GUNNISON, CO
GUNNISON-CRESTED
BUTTE RGNL (GUC).....**ILS or LOC Rwy 6¹**
RNAV (RNP) Rwy 6, 800-2 $\frac{1}{4}$
VOR or GPS-A²³

¹ILS, Categories A, B, C, 1000-3; LOC, Categories
A, B, C, D 1600-3.
²Categories A, B, C, 1700-3; Cat D, 2300-3.
³NA when local altimeter setting not available
except for operators with approved weather
reporting service.

HAYDEN, CO
YAMPA
VALLEY (HDN).....**RNAV (GPS) Rwy 28¹**
RNAV (GPS) Y Rwy 10²³
RNAV (RNP) Z Rwy 10²⁴
VOR/DME-B²⁵

¹Category C, 1100-3; Category D, 1600-3.
²NA when local weather not available.
³Categories A, B, 1100-2; Category C, 1100-3;
Category D, 1600-3.
⁴Categories A, B, C, D, 1400-5.
⁵Categories A, B, 1300-2; Category C, 1300-3;
Category D, 1600-3.

HOBBS, NM
LEA COUNTY
RGNL (HOB).....**ILS or LOC Rwy 3¹²**
LOC BC Rwy 21¹²
RNAV (GPS) Rwy 3²
RNAV (GPS) Rwy 21²
RNAV (GPS) Rwy 30²
VOR or TACAN Rwy 21

Category C, 800-2 $\frac{1}{4}$; Category D, 800-2 $\frac{1}{2}$.
¹NA when control tower closed.
²NA when local weather not available.

KREMMLING, CO
MC ELROY
AIRFIELD (20V).....**RNAV (GPS)-B¹**
RNAV (GPS) Rwy 27²
VOR/DME-A³

¹Categories A, B, 2100-2; Category C, 2100-3.
²Categories A, B, 1700-6; Category C, 1900-6.
³Categories A, B, 1800-2; Category C, 1900-3.

LA JUNTA, CO
LA JUNTA
MUNI (LHX).....**RNAV (GPS) Rwy 8**
RNAV (GPS) Rwy 26
NA when local weather not available.

03 DEC 2020 to 31 DEC 2020

03 DEC 2020 to 31 DEC 2020

NAME ALTERNATE MINIMUMS

LAMAR, CO

SOUTHEAST COLORADO
RGNL (LAA).....RNAV (GPS) Rwy 8
RNAV (GPS) Rwy 18
RNAV (GPS) Rwy 26
RNAV (GPS) Rwy 36¹
VOR Rwy 18²
VOR Rwy 36¹

NA when local weather not available.

¹Category D, 800-2¼.

²Categories A, B, 900-2; Category C, 900-2½,
Category D, 900-2¼.

LAS CRUCES, NM

LAS CRUCES
INTL (LRU).....RNAV (GPS) Rwy 12
RNAV (GPS) Rwy 30

NA when local weather not available.

Category C, 900-2½; Category D, 900-2¼.

LAS VEGAS, NM

LAS VEGAS MUNI (LVS).....RNAV (GPS) Rwy 2
RNAV (GPS) Rwy 20
RNAV (GPS) Rwy 32
VOR Rwy 20

NA when local weather not available.

LEADVILLE, CO

LAKE COUNTY (LXV).....RNAV (GPS) Rwy 16
Category A, 900-2; Category B, 1200-2;
Category C, 2100-3.

LONGMONT, CO

VANCE BRAND (LMO).....RNAV (GPS) Rwy 29²
RNAV (GPS)-B¹
VOR /DME-A¹

¹NA when local weather not available.

²Category C, 900-2½; Category D, 1500-3.

LOS ALAMOS, NM

LOS ALAMOS (LAM).....RNAV (GPS) Y Rwy 27
RNAV (GPS) Z Rwy 27

NA when local weather not available.

Category C, 800-2½.

MEEKER, CO

MEEKER (EEO).....RNAV (GPS)-B²
RNAV (GPS) Rwy 3¹

¹Categories A, B, 1800-2; Category C, 1800-3.

²Categories A, B, 1600-2; Category C, 1600-3.

MONTROSE, CO

MONTROSE
RGNL (MTJ).....RNAV (GPS) Rwy 13¹
RNAV (GPS) Rwy 17¹
RNAV (GPS) Rwy 35²
VOR Rwy 13²

¹Category D, 1100-3.

²Category C, 900-2¼; Category D, 1000-3.

NAME ALTERNATE MINIMUMS

PAGOSA SPRINGS, CO

STEVENS FIELD (PSO).....RNAV (GPS) Rwy 1
Category B, 900-2; Category C, 1300-3.

PORTALES, NM

PORTALES MUNI (PRZ).....RNAV (GPS) Rwy 1
NA when local weather not available.

PUEBLO, CO

PUEBLO
MEMORIAL (PUB).....ILS or LOC Rwy 8R¹
ILS or LOC Rwy 26L²³
RNAV (GPS) Rwy 8R⁴
RNAV (GPS) Rwy 17⁵⁶
RNAV (GPS) Rwy 26L⁴
RNAV (GPS) Rwy 35¹
VOR Rwy 26L⁷

¹LOC, Category C, 900-2½; Categories D, E,
1100-3.

²NA when control tower closed.

³ILS, Categories A, B, 700-2; Category C,
900-2½; Category D, 1100-3; LOC, Category C,
900-2½; Category D, 1100-3.

⁴Category C, 900-2½; Category D, 1100-3.

⁵Categories A, B, 1000-2, Category C, 1000-2¼;
Category D, 1000-3.

⁶NA when local weather not available.

⁷Category C, 900-2½.

RANGELY, CO

RANGELY (4V0).....RNAV (GPS) Rwy 7¹
RNAV (GPS) Rwy 25²

¹Categories A, B, 2000-2; Category C, 2000-3.

²Categories A, B, 1700-2; Category C, 1800-3.

RIFLE, CO

RIFLE GARFIELD
COUNTY (RIL).....LOC/DME-A¹
ILS Rwy 26²
RNAV (GPS) Y Rwy 8³
RNAV (GPS) W Rwy 26⁴
RNAV (RNP) Y Rwy 26⁵
RNAV (RNP) Z Rwy 8⁶
RNAV (RNP) Z Rwy 26⁵
VOR/DME-C³

¹Categories A, B, 2300-2; Category C, 2300-3.

²ILS, Categories A, B, C, 1300-4.

³Categories A, B, 1900-2; Category C, 1900-3.

⁴Categories A, B, 1700-2; Category C, 1700-3.

⁵Categories A, B, C, 900-2½.

⁶Categories A, B, C, 900-3.

NAME ALTERNATE MINIMUMS

NAME ALTERNATE

ROSWELL, NM

ROSWELL AIR CENTER (ROW).....**LOC BC Rwy 3¹**
RNAV (GPS) Rwy 3²
RNAV (GPS) Rwy 17²
RNAV (GPS) Rwy 21²
RNAV (GPS) Rwy 35²

¹NA when control tower closed.
²NA when local weather not available.

SALIDA, CO

SALIDA AIRPORT HARRIETT ALEXANDER FIELD (ANK).....**RNAV (GPS)-A**
Categories A, B, 2200-2.

SANTA FE, NM

SANTA FE MUNI (SAF).....**ILS or LOC Rwy 2¹²**
RNAV (GPS) Rwy 2⁵
RNAV (GPS) Rwy 15⁵
RNAV (GPS) Rwy 20⁵
RNAV (GPS) Rwy 28⁵
RNAV (GPS) Rwy 33⁵
VOR/DME-A³⁴
VOR Rwy 33³⁴

¹NA when control tower closed.
²ILS, LOC, Category C, 1000-3; Category D, 1400-3.
³Category D, 800-2¼.
⁴NA when control tower closed except for operators with approved weather reporting service.
⁵Category C, 1000-3; Category D, 1400-3.

SILVER CITY, NM

GRANT COUNTY (SVC).....**RNAV (GPS) Rwy 26¹**
VOR-A²

¹NA when local weather not available.
²NA when Deming FSS closed.

STERLING, CO

STERLING MUNI (STK).....**RNAV (GPS) Rwy 15**
RNAV (GPS) Rwy 33

NA when local weather not available.
Category D, 800-2¼.

TAOS, NM

TAOS REGIONAL (SKX).....**RNAV (GPS) Rwy 13¹**
VOR/DME-B²

¹Category C, 900-2½; Category D, 1000-3.
²Categories A, B, 1000-2; Category C, 1000-2¾; Category D, 1000-3.

TELLURIDE, CO

TELLURIDE RGNL (TEX).....**LOC Rwy 9¹**
RNAV (GPS) Y Rwy 9²
RNAV (GPS) Z Rwy 9¹
VOR/DME-A³

¹Categories A, B, 2300-2.
²Categories A, B, 3100-2.
³Categories A, B, 3400-6.
⁴Categories A, B, 2600-2; Category C, 2600-3.

TRINIDAD, CO

PERRY STOKES (TAD).....**RNAV (GPS) Rwy 3¹**
RNAV (GPS) Rwy 21²³

¹Category D, 800-2½.
²Category D, 900-2¾.
³NA when local weather not available.

TRUTH OR CONSEQUENCES, NM

TRUTH OR CONSEQUENCES MUNI (TCS).....**VOR-A**
Category D, 800-2¼.

WRAY, CO

WRAY MUNI (2V5).....**RNAV (GPS) Rwy 17**
RNAV (GPS) Rwy 35

NA when local weather not available.
Category C, 900-2½; Category D, 900-2¾.

03 DEC 2020 to 31 DEC 2020

03 DEC 2020 to 31 DEC 2020