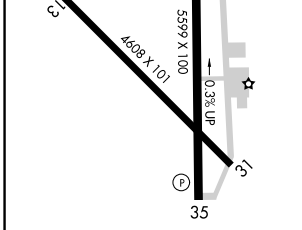
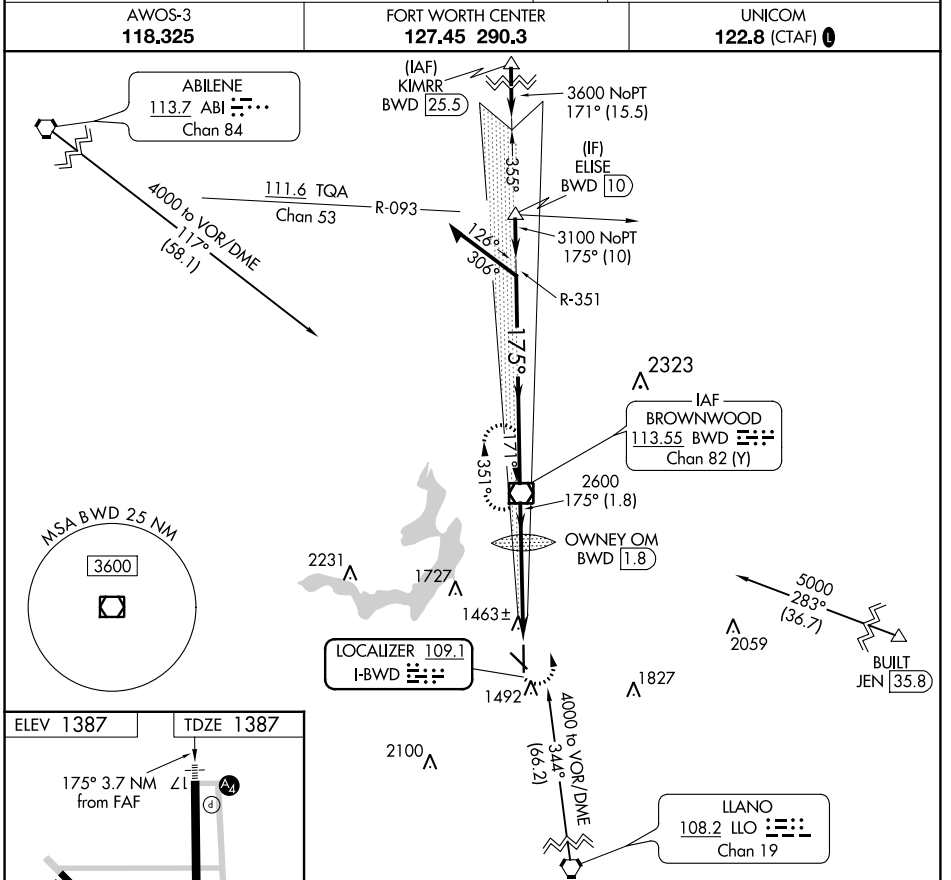


LOC I-BWD 109.1	APP CRS 175°	Rwy Idg TDZE Apt Elev	5599 1387 1387
---------------------------	------------------------	-----------------------------	-------------------------------------------

LOC RWY 17

BROWNWOOD RGNL (BWD)

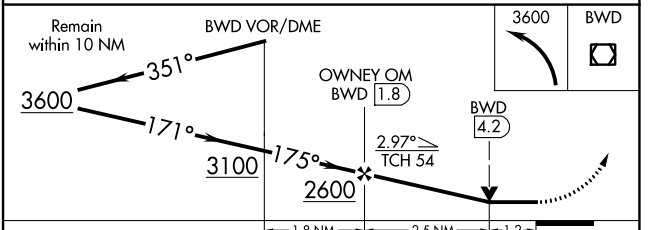
	Rwy 17 helicopter visibility reduction below 3/4 SM NA. Inop table does not apply.	MALSS 	MISSED APPROACH: Climbing left turn to 3600 direct BWD VOR/DME and hold.
	AWOS-3 118.325	FORT WORTH CENTER 127.45 290.3	UNICOM 122.8 (CTAF) 0



MIRL Rwy 13-31 and 17-35

FAF to MAP 3.7 NM

Knots	60	90	120	150	180
Min:Sec	3:42	2:28	1:51	1:29	1:14



CATEGORY	A	B	C	D
S-17	1820-1	433 (500-1)	1820-1 1/4 433 (500-1 1/2)	1820-1 1/2 433 (500-1 1/2)
CIRCLING	1820-1 433 (500-1)	1840-1 453 (500-1)	1980-1 1/2 593 (600-1 1/2)	2160-2 1/2 773 (800-2 1/2)

SC-3, 22 FEB 2024 to 21 MAR 2024

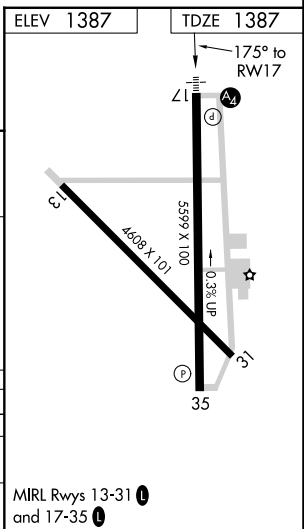
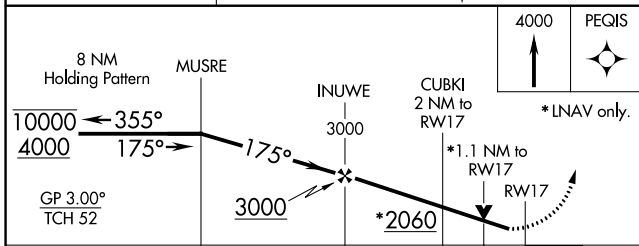
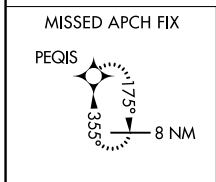
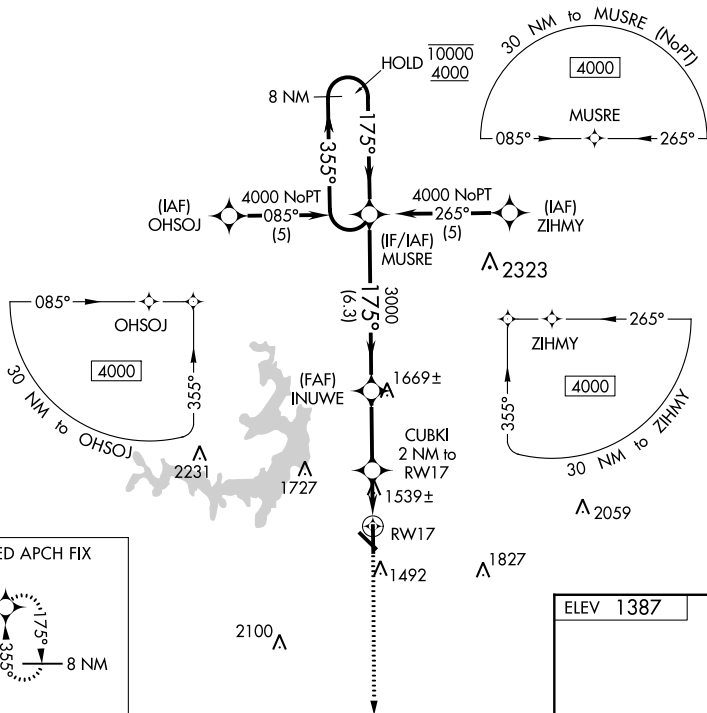
SC-3, 22 FEB 2024 to 21 MAR 2024

WAAS CH 70325 W17A	APP CRS 175°	Rwy Idg TDZE Apt Elev	5599 1387 1387
----------------------------------------	------------------------	-----------------------------	-------------------------------------------

RNAV (GPS) RWY 17

BROWNWOOD RGNL (BWD)

RNP APCH.		MALS	MISSED APPROACH: Climb to 4000 direct PEQIS and hold.
Rwy 17 helicopter visibility reduction below 3/4 SM NA.			
AWOS-3 118.325	FORT WORTH CENTER 127.45 290.3	UNICOM 122.8 (CTAF)	



CATEGORY	A	B	C	D
LPV DA		1637-3/4	250 (300-3/4)	
RNAV MDA	1800-3/4	413 (500-3/4)	1800-1 1/4	413 (500-1 1/4)
CIRCLING	1840-1	453 (500-1)	1980-1 1/2 593 (600-1 1/2)	2160-2 1/2 773 (800-2 1/2)

SC-3, 22 FEB 2024 to 21 MAR 2024

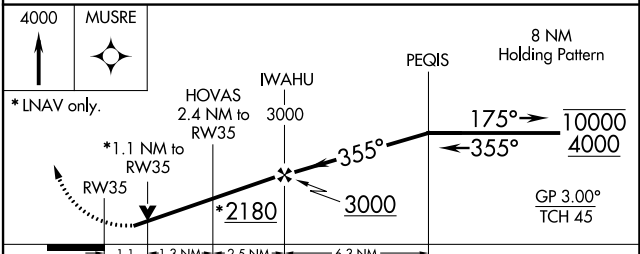
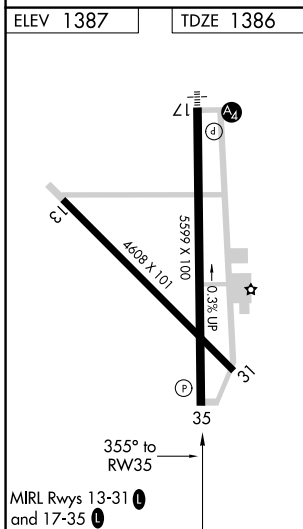
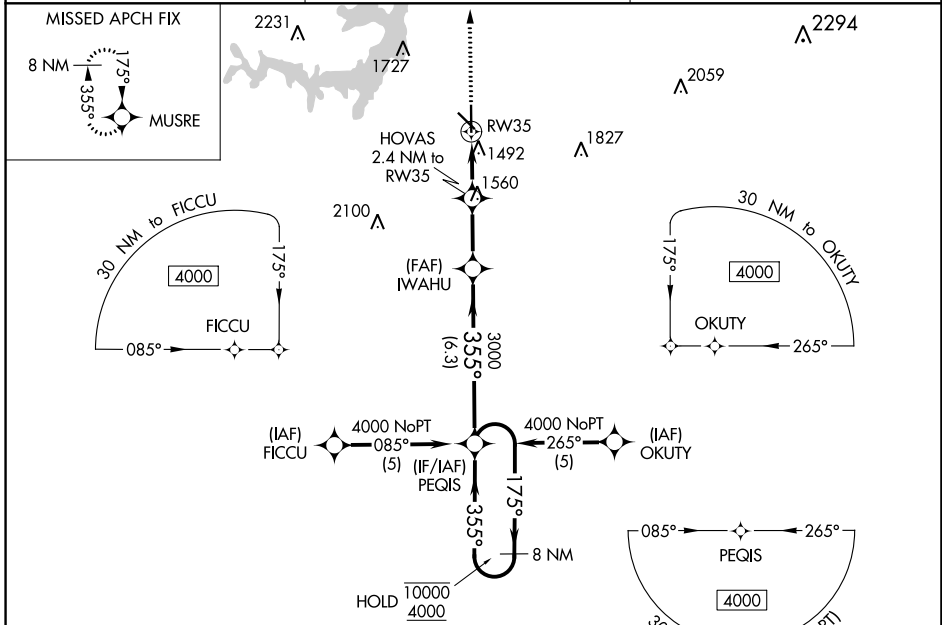
SC-3, 22 FEB 2024 to 21 MAR 2024

WAAS CH 77525 W35A	APP CRS 355°	Rwy Idg TDZE Apt Elev	5599 1386 1387
----------------------------------------	------------------------	-----------------------------	-------------------------------------------

RNAV (GPS) RWY 35

BROWNWOOD RGNL (BWD)

RNP APCH. ▼ Rwy 35 helicopter visibility reduction below ¾ SM NA.		MISSED APPROACH: Climb to 4000 direct MUSRE and hold.
AWOS-3 118.325	FORT WORTH CENTER 127.45 290.3	UNICOM 122.8 (CTAF)



CATEGORY	A	B	C	D
LPV DA	1636-1 250 (300-1)			
LNAV MDA	1780-1	394 (400-1)	1780-1½ 394 (400-1½)	1780-1¼ 394 (400-1¼)

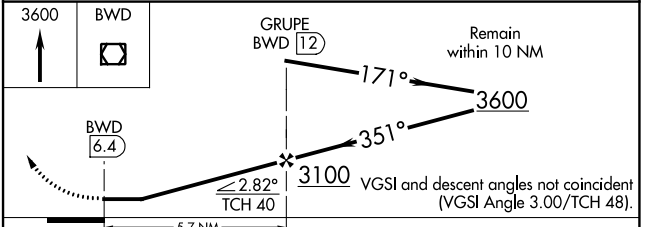
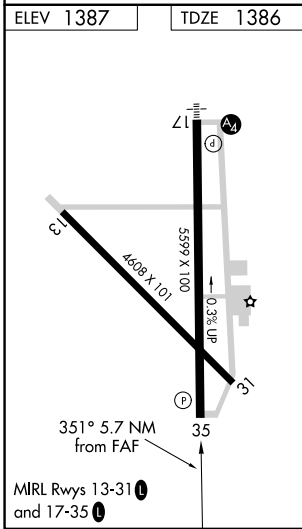
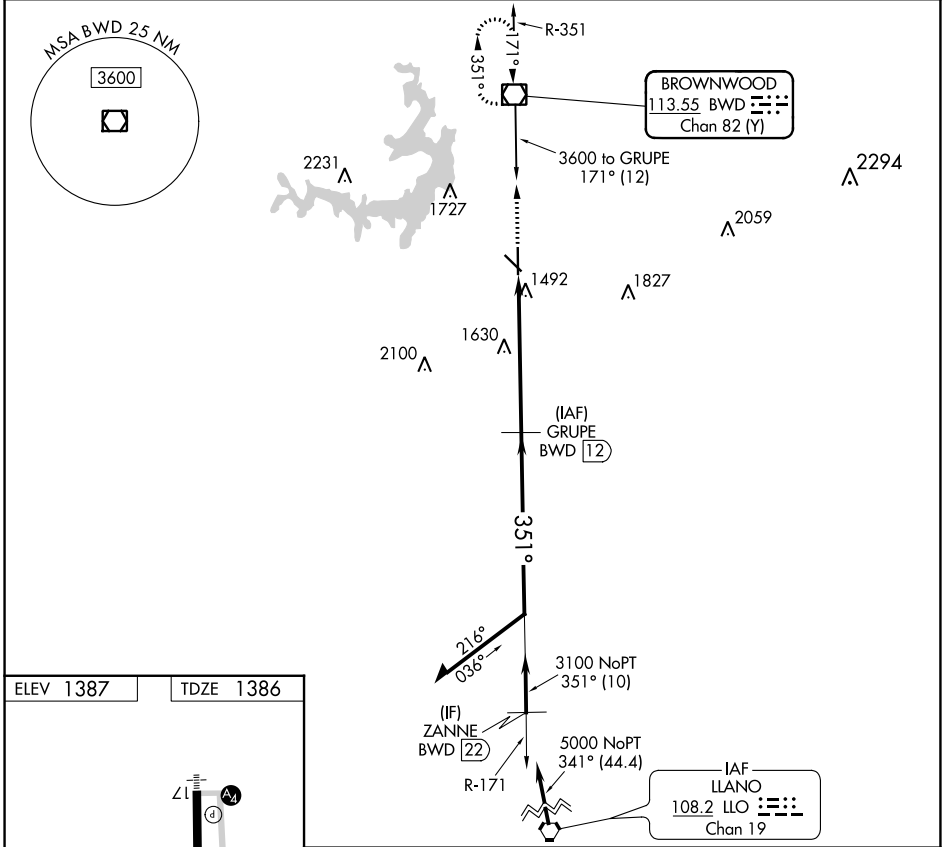
SC-3, 22 FEB 2024 to 21 MAR 2024

SC-3, 22 FEB 2024 to 21 MAR 2024

VOR/DME BWD 113.55 Chan 82 (Y)	APP CRS 351°	Rwy Idg TDZE Apt Elev	5599 1386 1387
----------------------------------------------------	------------------------	-----------------------------	-------------------------------------------

VOR RWY 35
BROWNWOOD RGNL (BWD)

DME required.		MISSED APPROACH: Climb to 3600 direct BWD VOR/DME and hold.
AWOS-3 118.325	FORT WORTH CENTER 127.45 290.3	UNICOM 122.8 (CTAF) 0



CATEGORY	A	B	C	D
S-35	1940-1	554 (600-1)	1940-1½	554 (600-1½)
CIRCLING	1940-1	553 (600-1)	1980-1½ 593 (600-1½)	2160-2½ 773 (800-2½)

SC-3, 22 FEB 2024 to 21 MAR 2024

SC-3, 22 FEB 2024 to 21 MAR 2024