

APP CRS	Rwy Idg	4006
272°	TDZE	-135
	Apt Elev	-129

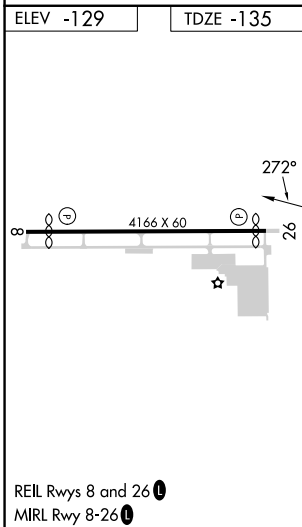
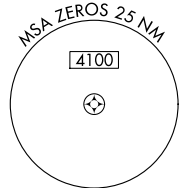
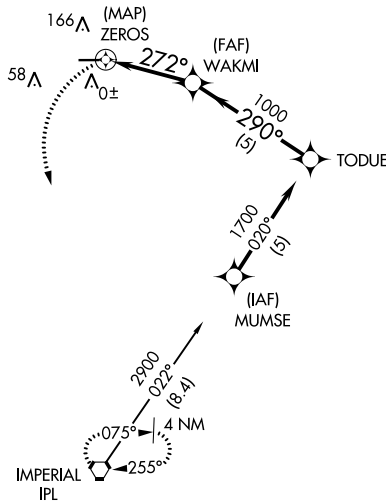
RNAV (GPS) RWY 26

BRAWLEY MUNI (BWC)

NA GPS or RNP-0.3 required. DME/DME RNP-0.3 NA. Use Imperial County altimeter setting. Circling Rwy 8 NA at night.

MISSED APPROACH: Climbing left turn to 3600 direct IPL VORTAC and hold.

IPL ASOS 132.175	YUMA CERAP 128.55 292.2	CTAF 122.9
----------------------------	-----------------------------------	----------------------



	A 571			
	3600	IPL		
	ZEROS	WAKMI	TODUE	
		1000	1700	
	0.3	3.2 NM	5 NM	
CATEGORY	A	B	C	D
LNAV MDA	360-1	495 (500-1)	360-1¼ 495 (500-1¼)	NA
CIRCLING	560-1	689 (700-1)	560-2 689 (700-2)	NA

Procedure Turn NA

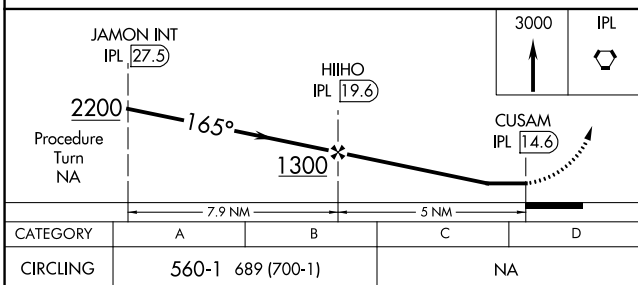
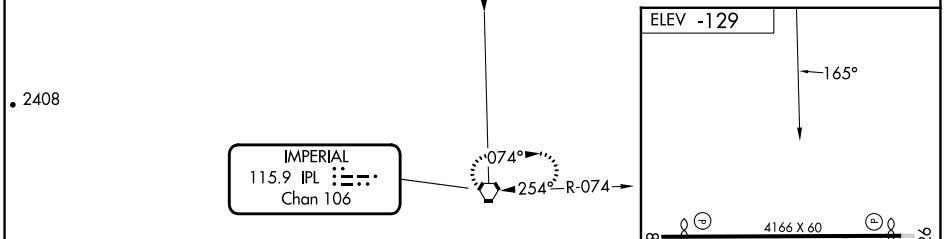
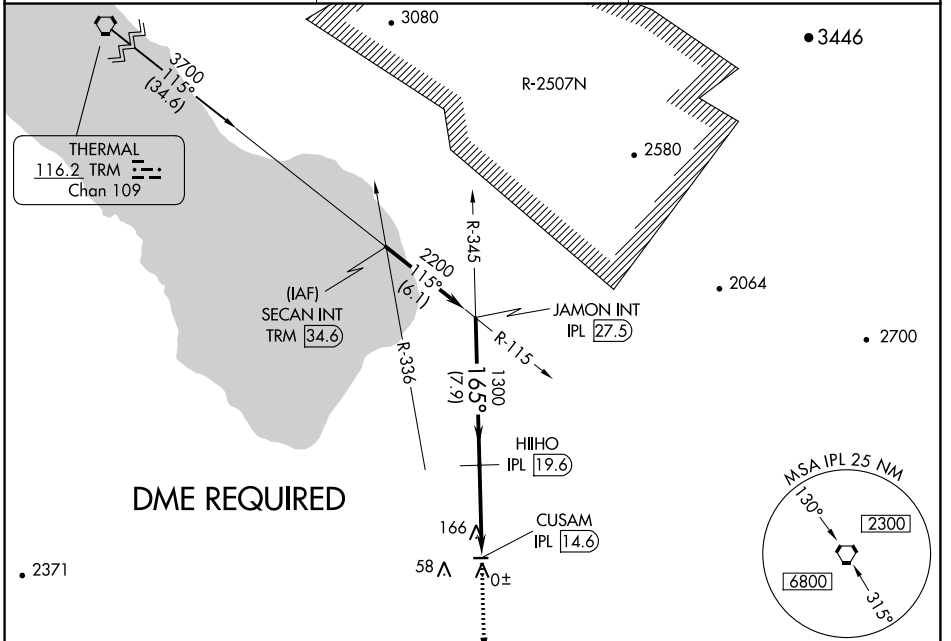
VORTAC IPL 115.9 Chan 106	APP CRS 165°	Rwy Idg TDZE Apt Elev	N/A N/A -129
-----------------------------------------------	------------------------	-----------------------------	-----------------------------------------

VOR-B
BRAWLEY MUNI (BWC)

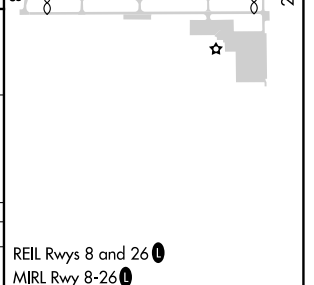
▼ Use Imperial County altimeter setting.
▲ NA DME Required.
Circling Rwy 8 NA at night.

MISSED APPROACH: Climb to 3000 direct IPL VORTAC and hold.

IPL ASOS 132.175	YUMA CERAP 128.55 292.2	CTAF 122.9
----------------------------	-----------------------------------	----------------------



CATEGORY	A	B	C	D
CIRCLING	560-1	689 (700-1)		NA



SW-3, 22 FEB 2024 to 21 MAR 2024

SW-3, 22 FEB 2024 to 21 MAR 2024