

WAAS CH <b>53500</b> <b>W11A</b>	APP CRS <b>110°</b>	Rwy Idg <b>5480</b>
		TDZE <b>145</b>
		Apt Elev <b>145</b>

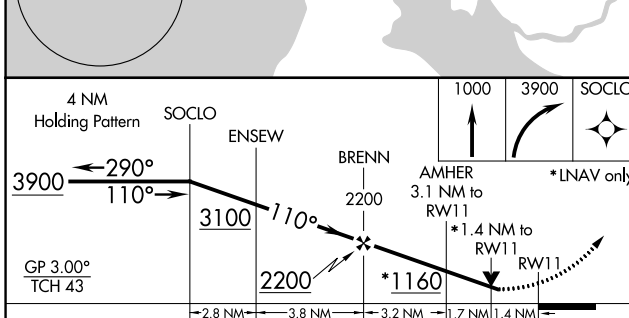
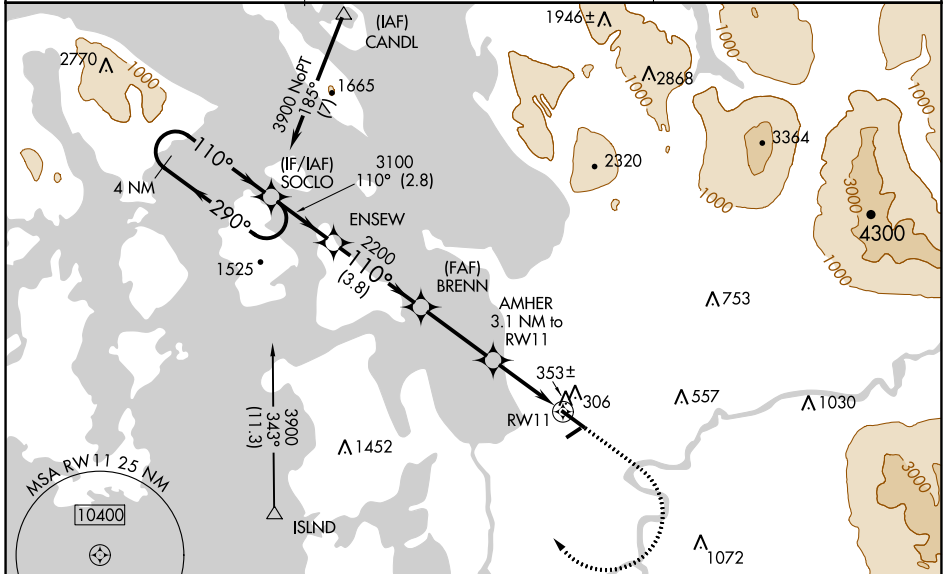
# RNAV (GPS) RWY 11

SKAGIT RGNL (BVS)

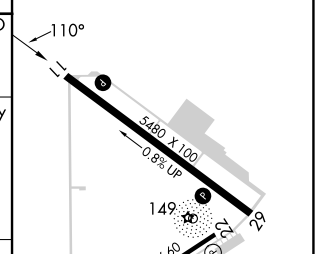
**⚠** Circling to Rwy 04 NA at night. For uncompensated Baro-VNAV systems, LNAV/VNAV NA below -15°C (5°F) or above 54°C (130°F). Baro-VNAV and VDP NA when using Friday Harbor altimeter setting. DME/DME RNP-0.3 NA. When local altimeter setting not received use Friday Harbor altimeter setting: increase LPV DA to 561 feet, LNAV/VNAV DA to 710 feet and all Cats visibilities ¼ SM; increase all MDA 60 feet and Cats C and D visibility ¼ SM. Helicopter visibility reduction below ¾ SM NA.

**MISSED APPROACH:** Climb to 1000 then climbing right turn to 3900 direct SOCLO and hold, continue climb-in-hold to 3900.

AWOS-3 <b>121.125</b>	WHIDBEY APP CON <b>120.7 270.8</b>	UNICOM <b>123.075 (CTAF)</b>
--------------------------	---------------------------------------	---------------------------------



ELEV 145	TDZE 145
----------	----------



CATEGORY	A	B	C	D
LPV DA		500-1¼	355 (400-1¼)	
LNAV/VNAV DA		649-1¾	504 (600-1¾)	
LNAV MDA	620-1	475 (500-1)	620-1¾ 475 (500-1¾)	700-1½ 555 (600-1½)
CIRCLING	680-1 535 (600-1)	700-1 555 (600-1)	700-1½ 555 (600-1½)	1000-2¾ 855 (900-2¾)

LURL Rwy 4-22  
 REIL Rws 11 and 29  
 MRL Rwy 11-29

NW-1, 07 SEP 2023 to 05 OCT 2023

NW-1, 07 SEP 2023 to 05 OCT 2023

WAAS CH <b>70407</b> <b>W29A</b>	APP CRS <b>291°</b>	Rwy Idg TDZE Apt Elev	<b>5480</b> <b>127</b> <b>145</b>
--	------------------------	-----------------------------	---

# RNAV (GPS) RWY 29

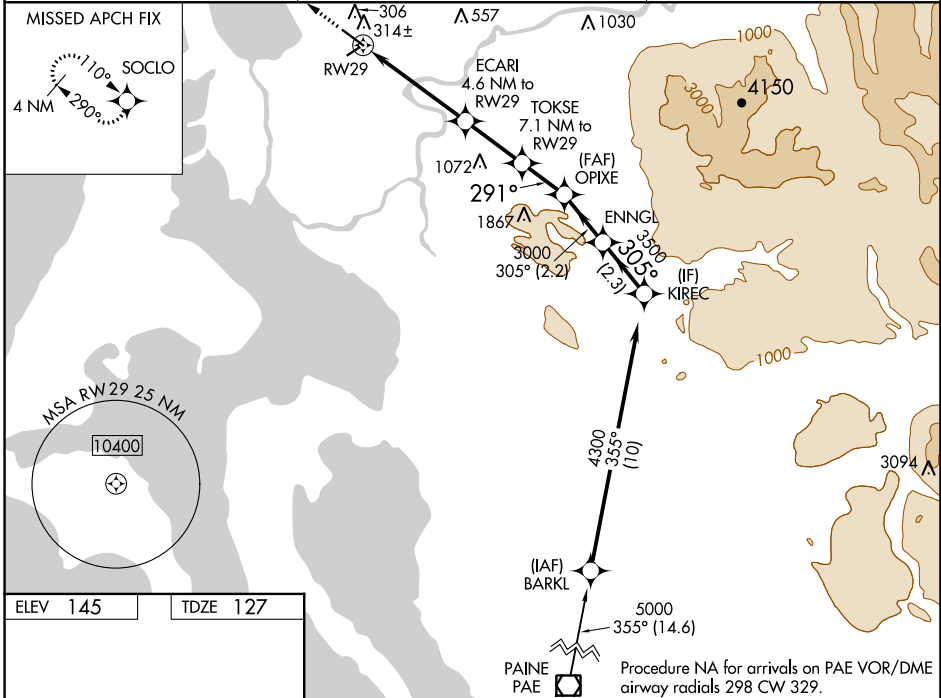
SKAGIT RGNL (BVS)

RNP APCH.

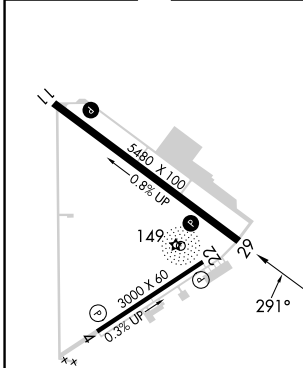
**▼** For uncompensated Baro-VNAV systems, LNAV/VNAV NA below -15°C or above 54°C.  
**▲** Baro-VNAV and VDP NA when using Friday Harbor altimeter setting. When local altimeter setting not received use Friday Harbor altimeter setting; increase LPV DA to 438 feet, LNAV/VNAV DA to 536 feet and all Cats visibility ¼ SM; increase all MDA 60 feet.

MISSED APPROACH: Climb to 4000 direct SOCLO and hold, continue climb-in-hold to 4000.

AWOS-3 <b>121.125</b>	WHIDBEY APP CON <b>120.7 270.8</b>	UNICOM <b>123.075 (CTAF)</b>
--------------------------	---------------------------------------	---------------------------------



ELEV 145	TDZE 127
----------	----------



LIRL Rwy 4-22  
 REIL Rws 11 and 29  
 MIRL Rwy 11-29

4000	SOCLO				
*LNAV only		TOKSE 7.1 NM to RW29	OPIXE 3000	ENNGL	KIREC 4300
		ECARI 4.6 NM to RW29			
		RW29	291°	305°	3500
		1.4 NM	3.2 NM	2.5 NM	1.9 NM
CATEGORY	A	B	C	D	
LPV DA	377-7/8		250 (300-7/8)		
LNAV/VNAV DA	475-1 1/4		348 (400-1 1/4)		GP 3.00° TCH 42
LNAV MDA	580-1	453 (500-1)	580-1 3/8	453 (500-1 3/8)	

NW-1, 07 SEP 2023 to 05 OCT 2023

NW-1, 07 SEP 2023 to 05 OCT 2023