

LOC/DME I-BOS 110.3 Chan 40	APP CRS 035°	Rwy Idg 8851 TDZE 18 Apt Elev 19
---	------------------------	---

ILS RWY 4R (CAT II & III)

GENERAL EDWARD LAWRENCE LOGAN INTL (BOS)

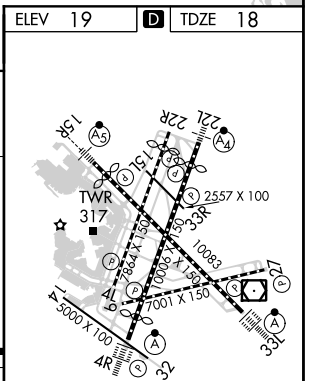
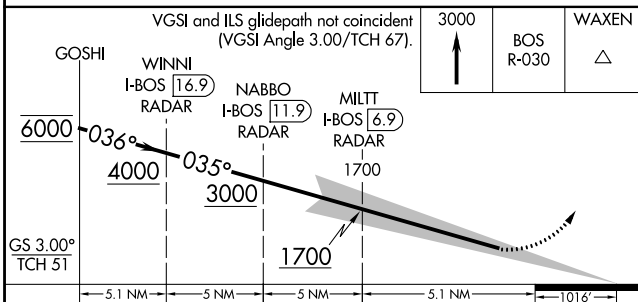
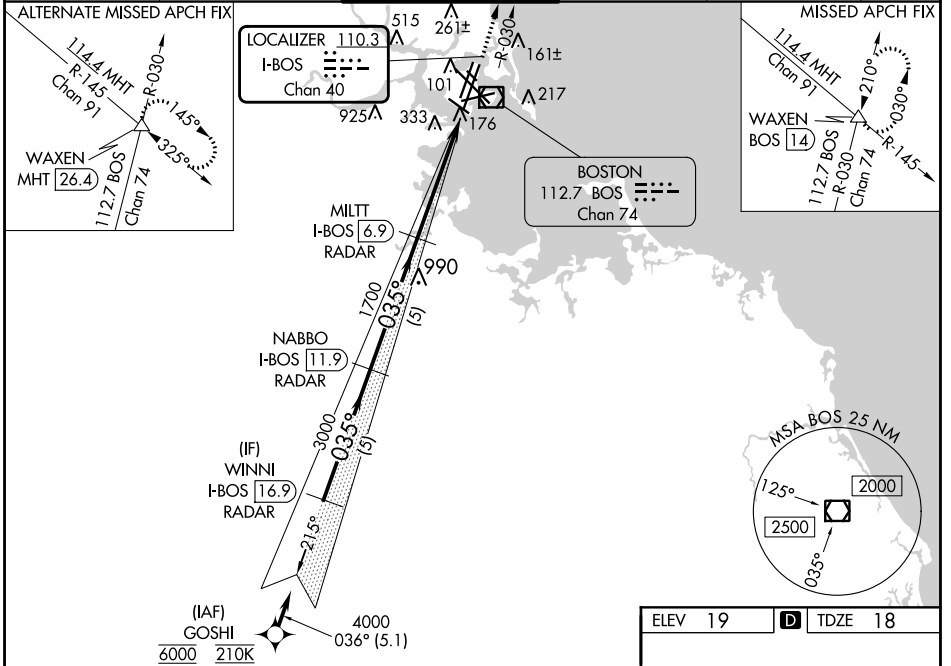
RNAV 1-GPS or RADAR required for procedure entry. DME or RADAR required.

When control tower reports tall vessels in approach area, procedure NA. RVR 1000 authorized with specific OPSPEC, MSPEC or LOA approval and use of Autoland or HUD to touchdown. Simultaneous approach authorized. Simultaneous operations require use of vertical guidance; maintain last assigned altitude until established on glideslope.



MISSED APPROACH: Climb to 3000 on BOS VOR/DME R-030 to WAXEN INT/BOS 14 DME and hold.

D-ATIS 135.0	BOSTON APP CON 120.6 263.1	BOSTON TOWER 128.8 257.8 (WEST) 132.225 257.8 (EAST)	GND CON 121.75 121.9	CLNC DEL 121.65 257.8	CPDLC
------------------------	--------------------------------------	--	--------------------------------	---------------------------------	-------



CATEGORY	A	B	C	D
S-ILS 4R	CAT II RA 99/12 100 DA 118			
S-ILS 4R	CAT III RVR 06			

CATEGORY II & III ILS - SPECIAL AIRCREW & AIRCRAFT CERTIFICATION REQUIRED

TDZ/CL Rwy's
4R, 15R and 33L
REIL Rwy's 4L, 27 and 32
MIRL Rwy 15L-33R
HIRL Rwy's 4L-22R, 4R-22L,
9-27, 14-32 and 15R-33L

NE-1, 22 FEB 2024 to 21 MAR 2024

NE-1, 22 FEB 2024 to 21 MAR 2024

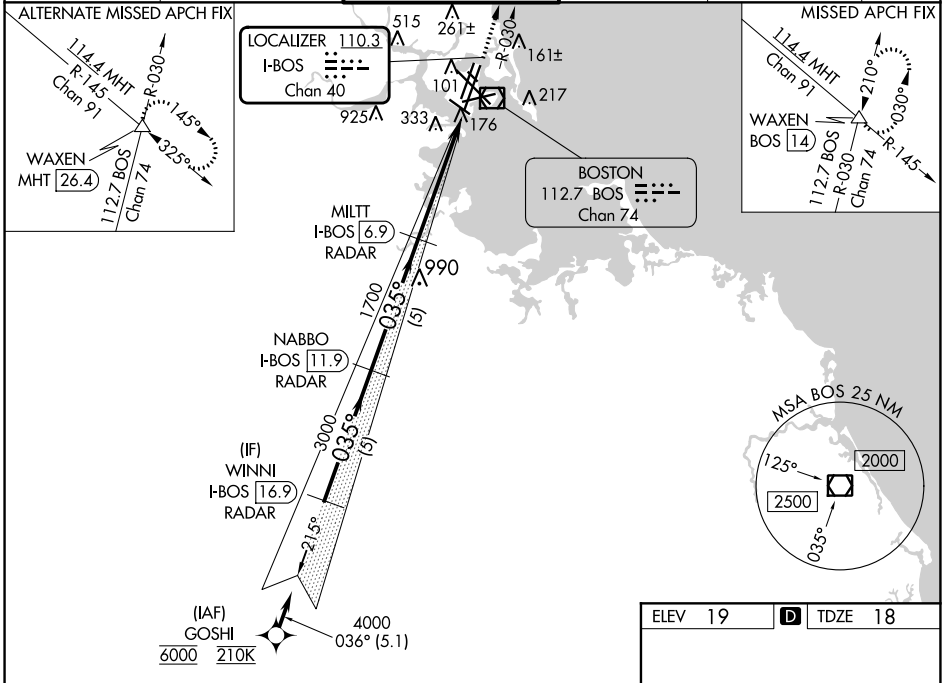
LOC/DME I-BOS 110.3 Chan 40	APP CRS 035°	Rwy Idg 8851 TDZE 18 Apt Elev 19
--	------------------------	---

ILS RWY 4R (SA CAT I)

GENERAL EDWARD LAWRENCE LOGAN INTL (BOS)

RNAV 1-GPS or RADAR required for procedure entry. DME or RADAR required.		ALSF-2 	MISSED APPROACH: Climb to 3000 on BOS VOR/DME R-030 to WAXEN INT/BOS 14 DME and hold.
<p>▼ When control tower reports tall vessels in approach area, procedure NA. Requires specific OPSPEC, MSPEC, or LOA approval and use of HUD to DH. Simultaneous approach authorized. Simultaneous operations require use of vertical guidance; maintain last assigned altitude until established on glideslope.</p>			

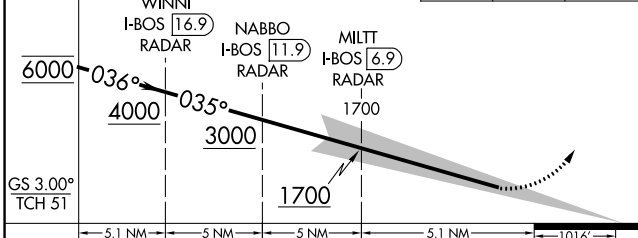
D-ATIS 135.0	BOSTON APP CON 120.6 263.1	BOSTON TOWER 128.8 257.8 (WEST) 132.225 257.8 (EAST)	GND CON 121.75 121.9	CLNC DEL 121.65 257.8	CPDLC
------------------------	--------------------------------------	--	--------------------------------	---------------------------------	-------



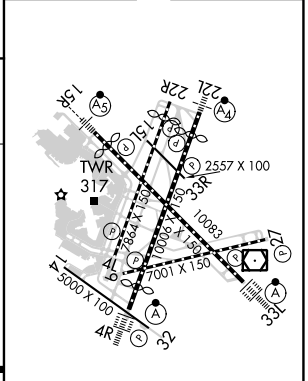
NE-1, 22 FEB 2024 to 21 MAR 2024

NE-1, 22 FEB 2024 to 21 MAR 2024

VGSI and ILS glidepath not coincident (VGSI Angle 3.00/TCH 67).	3000	WAXEN
	↑	SOB R-030
		△



ELEV 19	D	TDZE 18
---------	---	---------



CATEGORY	A	B	C	D
S-ILS 4R	RA 168/14		150 DA 168	

SA CATEGORY I ILS - SPECIAL AIRCREW & AIRCRAFT CERTIFICATION REQUIRED

TDZ/CL Rwy 4R, 15R and 33L
 REIL Rwy 4L, 27 and 32
 MIRL Rwy 15L-33R
 HIRL Rwy 4L-22R, 4R-22L, 9-27, 14-32 and 15R-33L


LOC/DME I-MDC	APP CRS	Rwy Idg	9201
110.7	149°	TDZE	17
Chan 44		Apt Elev	19

ILS or LOC RWY 15R

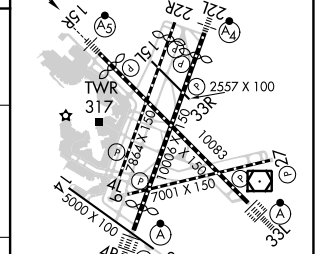
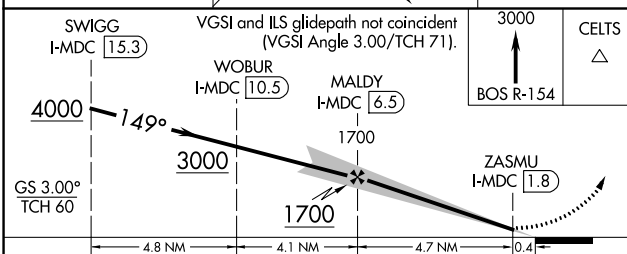
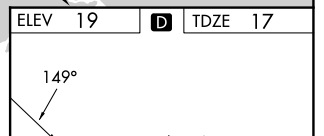
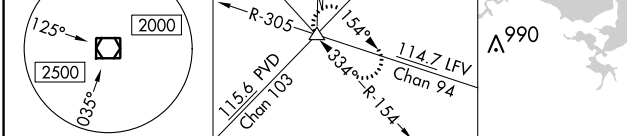
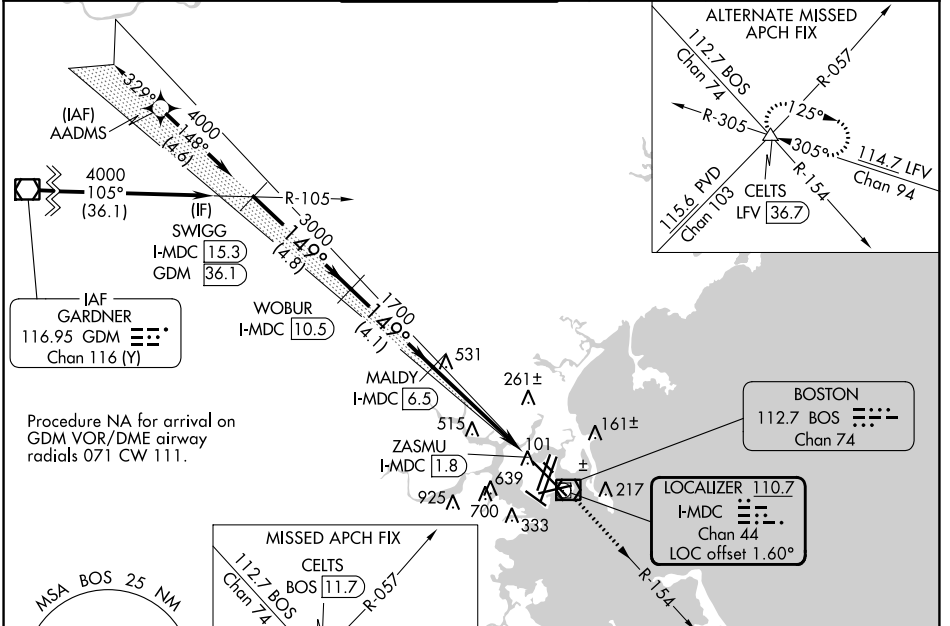
GENERAL EDWARD LAWRENCE LOGAN INTL (BOS)

DME required. From AADMS: RNAV 1-GPS required.

⚠ Circling NA for Cats C and D west of Rwy 4L and 15R. Circling NA to Rwy 14. For inop ALS, increase S-LOC 15R Cat C/D visibility to 1½ SM.

MALSR

 MISSED APPROACH: Climb to 3000 on BOS VOR/DME R-154 to CELTS INT/BOS 11.7 DME and hold.

D-ATIS 135.0	BOSTON APP CON 120.6 263.1	BOSTON TOWER 128.8 257.8 (WEST) 132.225 257.8 (EAST)	GND CON 121.75 121.9	CLNC DEL 121.65 257.8	CPDLC
------------------------	--------------------------------------	---	--------------------------------	---------------------------------	-------



CATEGORY	A	B	C	D
S-ILS 15R	267/24		250 (300-½)	
S-LOC 15R	580/24	563 (600-½)	580-1¼	563 (600-1¼)
C CIRCLING	940-1¼ 921 (1000-1¼)	1040-1½ 1021 (1100-1½)	620-1¾ 601 (700-1¾)	620-2 601 (700-2)

TDZ/CL Rwy 4R, 15R and 33L
 REIL Rwy 4L, 27 and 32
 MIRL Rwy 15L-33R
 HIRL Rwy 4L-22R, 4R-22L, 9-27, 14-32 and 15R-33L

NE-1, 22 FEB 2024 to 21 MAR 2024

NE-1, 22 FEB 2024 to 21 MAR 2024

LOC/DME I-LQN 110.3 Chan 40	APP CRS 215°	Rwy Idg 8806 TDZE 16 Apt Elev 19
---	------------------------	---

ILS or LOC RWY 22L

GENERAL EDWARD LAWRENCE LOGAN INTL (BOS)

RADAR required for procedure entry. DME or RADAR required.

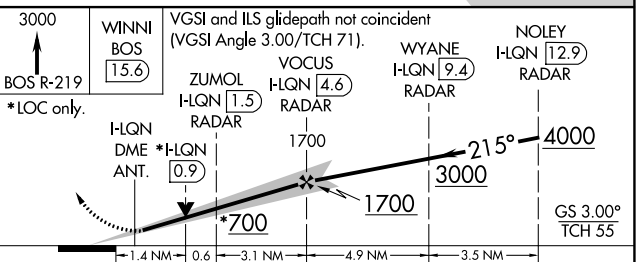
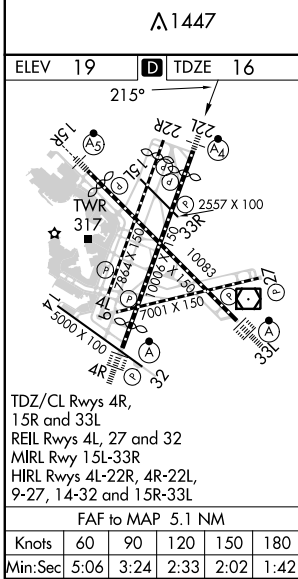
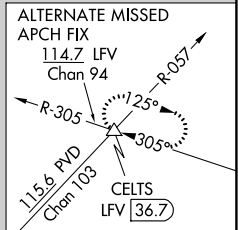
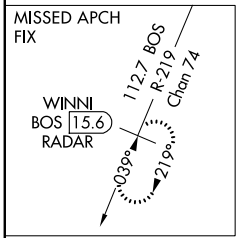
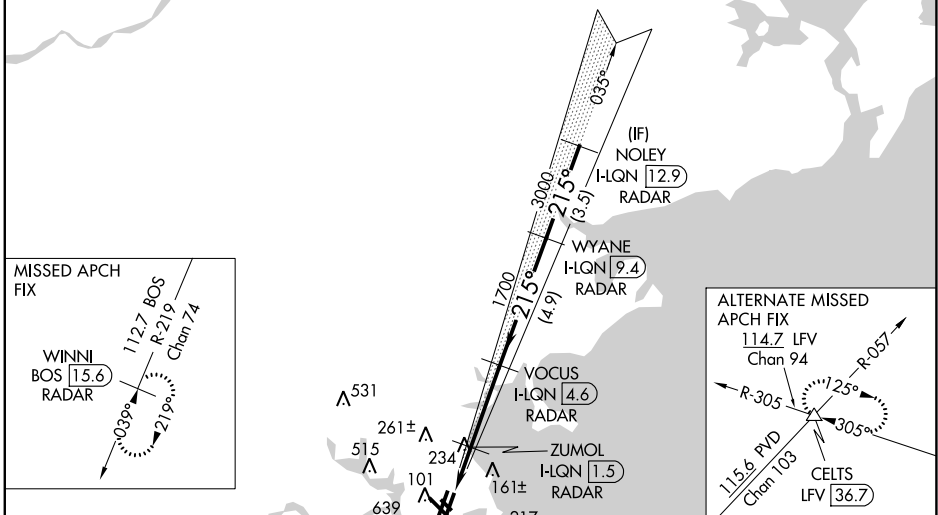
▼ Inop table does not apply to S-ILS 22L. Circling NA for Cats C and D west of Rwy 4L and 15R. Circling NA to Rwy 14.

▲



MISSED APPROACH: Climb to 3000 on BOS VOR/DME R-219 to WINNI/ BOS 15.6 DME/RADAR and hold.

D-ATIS 135.0	BOSTON APP CON 120.6 263.1	BOSTON TOWER 128.8 257.8 (WEST) 132.225 257.8 (EAST)	GND CON 121.75 121.9	CLNC DEL 121.65 257.8	CPDLC
------------------------	--------------------------------------	--	--------------------------------	---------------------------------	-------



CATEGORY	A	B	C	D
S-ILS 22L	216/40 200 (200-¾)			
S-LOC 22L	540/40	524 (600-¾)	540-1¼	524 (600-1¼)
C CIRCLING	960-1¼ 941 (1000-1¼)	1060-1½ 1041 (1100-1½)	640-1¾ 621 (700-1¾)	640-2 621 (700-2)

ILS or LOC RWY 22L

NE-1, 22 FEB 2024 to 21 MAR 2024

NE-1, 22 FEB 2024 to 21 MAR 2024

LOC/DME I-DGU 111.3 Chan 50	APP CRS 272°	Rwy ldg 7001 TDZE 17 Apt Elev 19
---	------------------------	---

ILS or LOC RWY 27

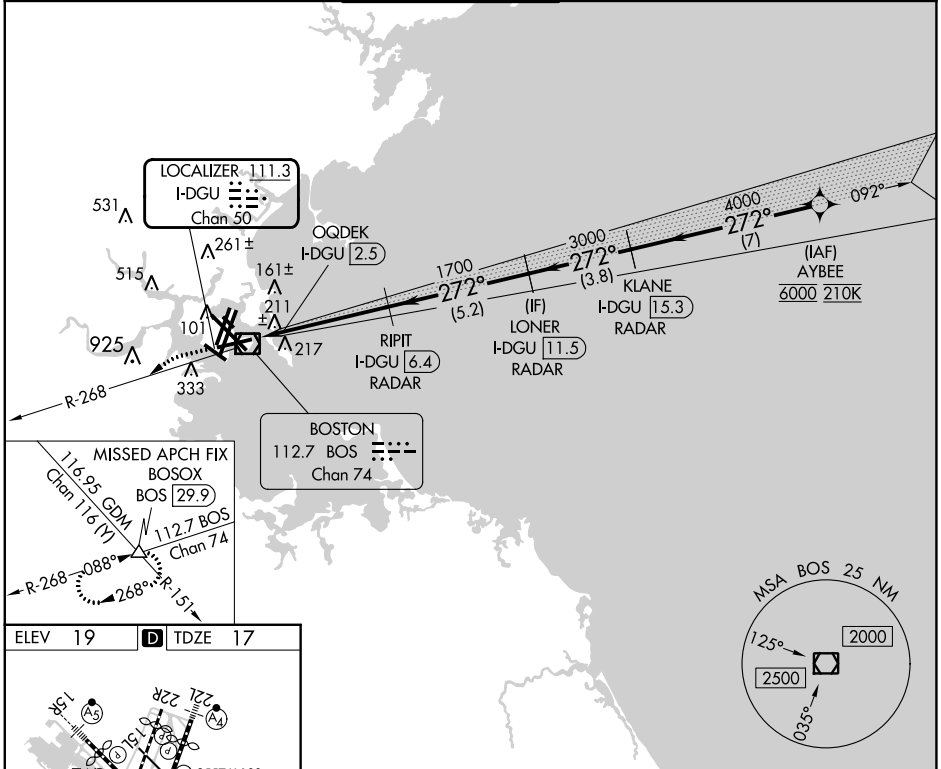
GENERAL EDWARD LAWRENCE LOGAN INTL (BOS)

DME or RADAR required. RADAR required for procedure entry.
From AYBEE: RNAV 1-GPS required.

MISSED APPROACH: Climb to 3000
on BOS VOR/DME R-268 to
BOSOX INT/BOS 29.9 DME and hold.

- Circling NA to Rwy 14.
- Circling NA for Cats C and D west of Rws 4L and 15R.

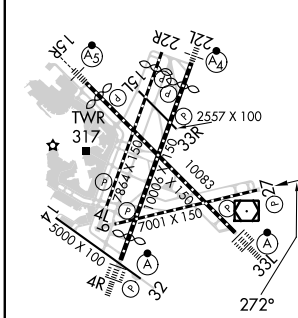
D-ATIS 135.0	BOSTON APP CON 120.6 263.1	BOSTON TOWER 128.8 257.8 (WEST) 132.225 257.8 (EAST)	GND CON 121.75 121.9	CLNC DEL 121.65 257.8	CPDLC
------------------------	--------------------------------------	--	--------------------------------	---------------------------------	-------



NE-1, 22 FEB 2024 to 21 MAR 2024

NE-1, 22 FEB 2024 to 21 MAR 2024

ELEV 19	D	TDZE 17
----------------	----------	----------------



TDZ/CL Rws 4R, 15R and 33L
REIL Rws 4L, 27 and 32
MIRL Rwy 15L-33R
HIRL Rws 4L-22R, 4R-22L, 9-27, 14-32 and 15R-33L

FAF to MAP 3.9 NM

Knots	60	90	120	150	180
Min:Sec	3:48	2:32	1:54	1:31	1:16

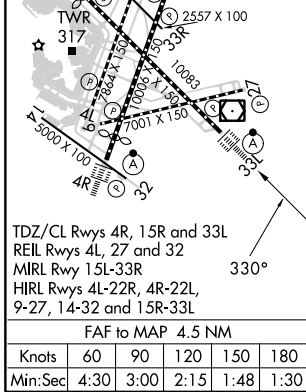
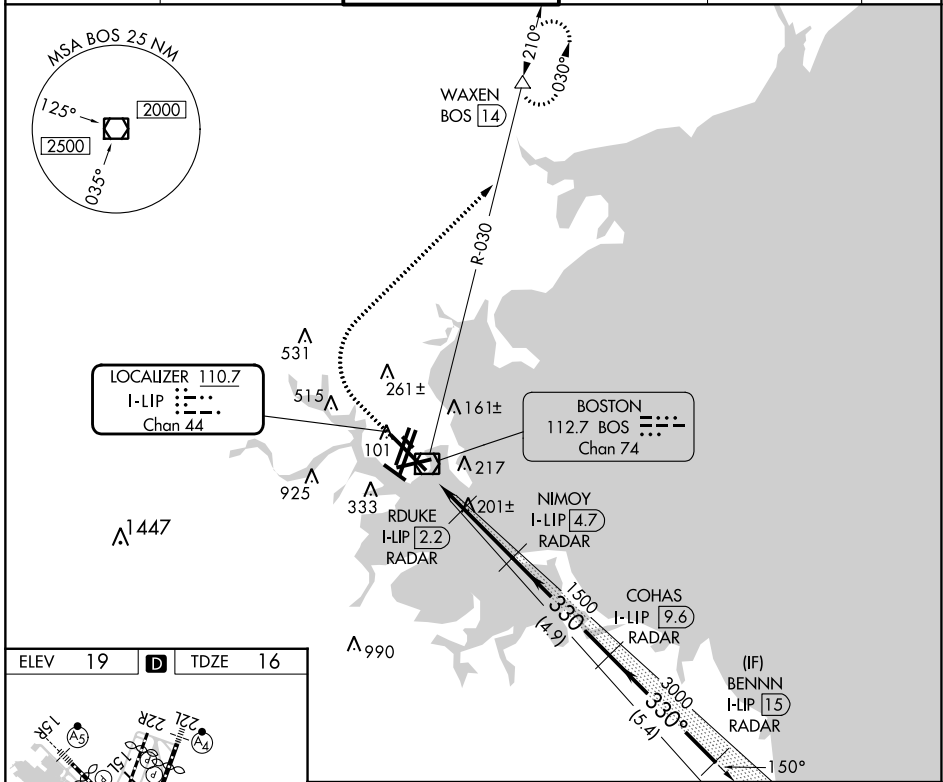
BOSOX BOS R-268 RIPIT I-DGU [6.4] RADAR OQDEK I-DGU [2.5] LONER I-DGU [11.5] RADAR KLANE I-DGU [15.3] RADAR AYBEE	VGSi and ILS glidepath not coincident (VGSi Angle 3.00/TCH 71).				
	3000	1700	4000	6000	
GS 3.00° TCH 57	1.2	3.9 NM	5.2 NM	3.8 NM	7 NM
CATEGORY	A	B	C	D	
S-ILS 27		460-1½	443 (500-1½)		
S-LOC 27		460-1½	443 (500-1½)		
<input checked="" type="checkbox"/> CIRCLING	940-1½ 921 (1000-1½)	1040-1½ 1021 (1100-1½)	620-1¾ 601 (700-1¾)	620-2 601 (700-2)	

LOC/DME I-LIP	APP CRS	Rwy Idg	10083
110.7	330°	TDZE	16
Chan 44		Apt Elev	19

ILS or LOC RWY 33L

GENERAL EDWARD LAWRENCE LOGAN INTL (BOS)

RADAR required for procedure entry, DME.		ALSIF-2	MISSED APPROACH: Climb to 1500 then climbing right turn to 3000 on BOS VOR/DME R-030 to WAXEN/BOS 14 DME and hold.		
Circling NA for Cats C and D west of Rwys 4L and 15R. Circling NA to Rwy 14.					
D-ATIS	BOSTON APP CON	BOSTON TOWER	GND CON	CLNC DEL	CPDLC
135.0	120.6 263.1	128.8 257.8 (WEST) 132.225 257.8 (EAST)	121.75 121.9	121.65 257.8	



1500	3000	WAXEN	VGSIL and ILS glidepath not coincident (VGSIL Angle 3.00/TCH 68).		BENNN	
		BOS R-030	NIMOY I-LIP 4.7 RADAR	COHAS I-LIP 9.6 RADAR	I-LIP 15 RADAR	
		RDUKE I-LIP 2.2 RADAR	1500	3000	4000	
		I-LIP 0.2	I-LIP 1.4	I-LIP 2.2	I-LIP 4.7	
		700	1500	3000	4000	
		1.2 NM	0.8 NM	2.5 NM	4.9 NM	5.4 NM
CATEGORY	A		B		C	D
S-ILS 33L			216/18		200 (200-1/2)	
S-LOC 33L	460/24		444 (500-1/2)		460/45 444 (500-3/4)	
CIRCLING	940-1 1/4 921 (1000-1 1/4)		1040-1 1/2 1021 (1100-1 1/2)		1040-3 1021 (1100-3)	

NE-1, 22 FEB 2024 to 21 MAR 2024

NE-1, 22 FEB 2024 to 21 MAR 2024

LOC/DME I-BOS 110.3 Chan 40	APP CRS 035°	Rwy Idg TDZE Apt Elev	8851 18 19
--	------------------------	-----------------------------	---------------------------------------

ILS or LOC RWY 4R

GENERAL EDWARD LAWRENCE LOGAN INTL (BOS)

GENERAL EDWARD LAWRENCE LOGAN INTL (BOS)

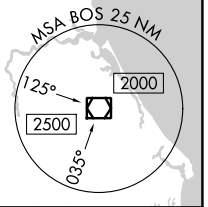
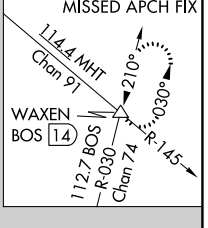
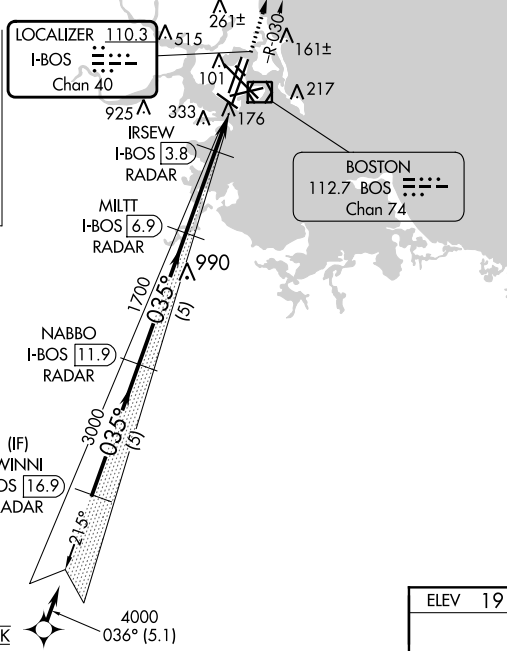
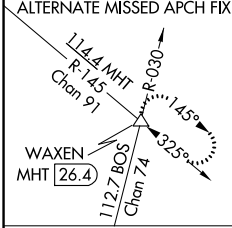
RNAV 1-GPS or RADAR required for procedure entry. DME or RADAR required.

⚠ Circling NA for Cat C/D west of Rwy 4L and 15R. Circling NA to Rwy 14. # For inop ALS increase S-LOC 4R Cat A/B visibility to RVR 5500; Rwy 4R helicopter visibility reduction below 4000 RVR NA. † When vessels taller than 144 feet present, S-ILS 4R NA. Simultaneous approach authorized. Simultaneous operations require use of vertical guidance; maintain last assigned altitude until established on glideslope.

ALSF-2

MISSED APPROACH: Climb to 3000 on BOS VOR/DME R-030 to WAXEN INT/BOS 14 DME and hold.

D-ATIS 135.0	BOSTON APP CON 120.6 263.1	BOSTON TOWER 128.8 257.8 (WEST) 132.225 257.8 (EAST)	GND CON 121.75 121.9	CLNC DEL 121.65 257.8	CPDLC
------------------------	--------------------------------------	--	--------------------------------	---------------------------------	-------



GOSHI	WINNI I-BOS 16.9 RADAR	NABBO I-BOS 11.9 RADAR	MILTT I-BOS 6.9 RADAR	IRSEW I-BOS 3.8 RADAR	BOS R-030	WAXEN
6000	4000	3000	1700	700		
GS 3.00° TCH 51	VGSi and ILS glidepath not coincident (VGSi Angle 3.00/TCH 67).					
	5.1 NM	5 NM	5 NM	3.1 NM	0.9 NM	1.1 NM
CATEGORY	A	B	C	D		
S-ILS 4R	218/18		200 (200-½)			
S-LOC 4R	440/24	422 (500-½)	440/40	422 (500-¾)		
CIRCLING	940-1¼	1040-1½	620-1¾	620-2		
	921 (1000-1¼)	1021 (1100-1½)	601 (700-1¾)	601 (700-2)		
† APPROACH MINIMA WHEN CONTROL TOWER REPORTS TALL VESSELS IN APPROACH AREA						
S-ILS 4R	374/40		356 (400-¾)			
S-LOC 4R #	440/40		422 (500-¾)			

ELEV 19 TDZE 18

TDZ/CL Rwy 4R, 15R and 33L
REIL Rwy 4L, 27 and 32
MIRL Rwy 15L-33R
HIRL Rwy 4L-22R, 4R-22L, 9-27, 14-32 and 15R-33L

FAF to MAP 5.1 NM

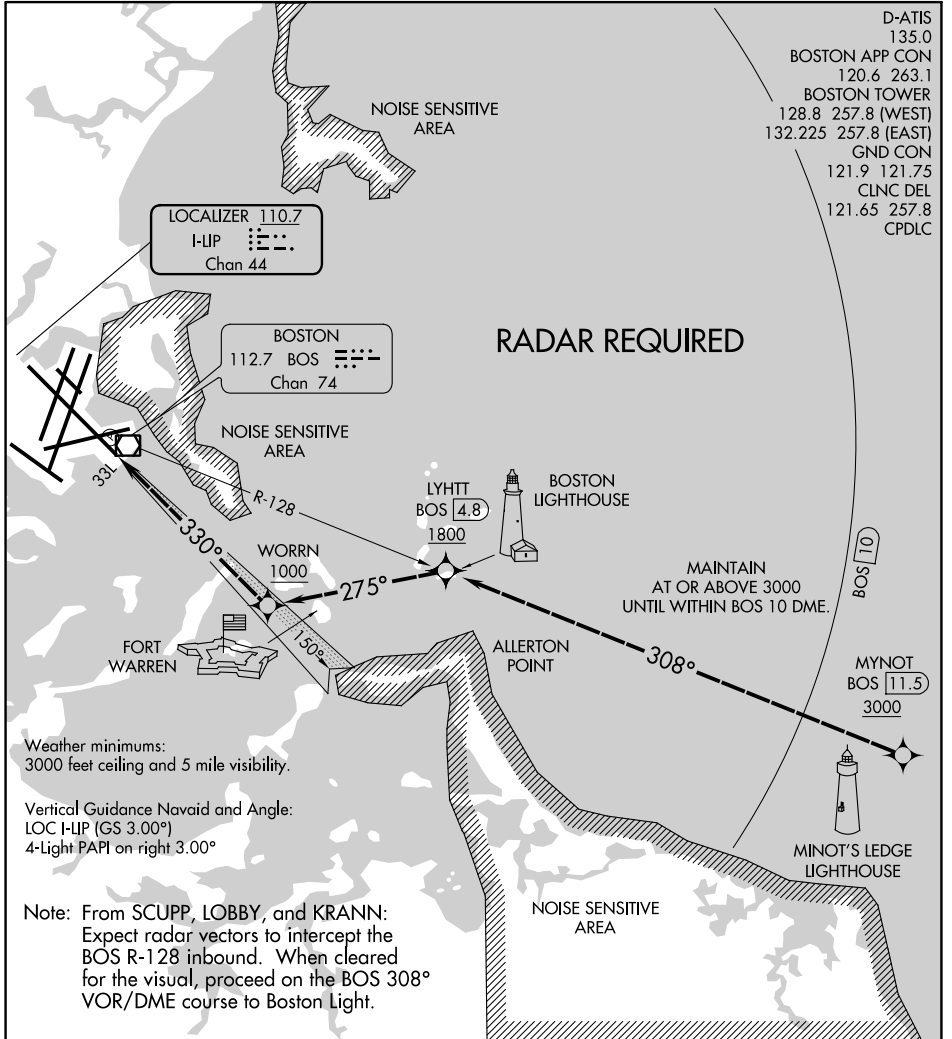
Knots	60	90	120	150	180
Min:Sec	5:06	3:24	2:33	2:02	1:42

NE-1, 22 FEB 2024 to 21 MAR 2024

NE-1, 22 FEB 2024 to 21 MAR 2024

LIGHT VISUAL RWY 33L

GENERAL EDWARD LAWRENCE LOGAN INTL (BOS)
AL-58 (FAA) BOSTON, MASSACHUSETTS



NE-1, 22 FEB 2024 to 21 MAR 2024

NE-1, 22 FEB 2024 to 21 MAR 2024

LIGHT VISUAL RWY 33L

Amdt 1A 12OCT17

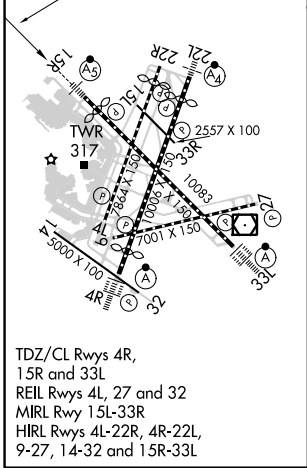
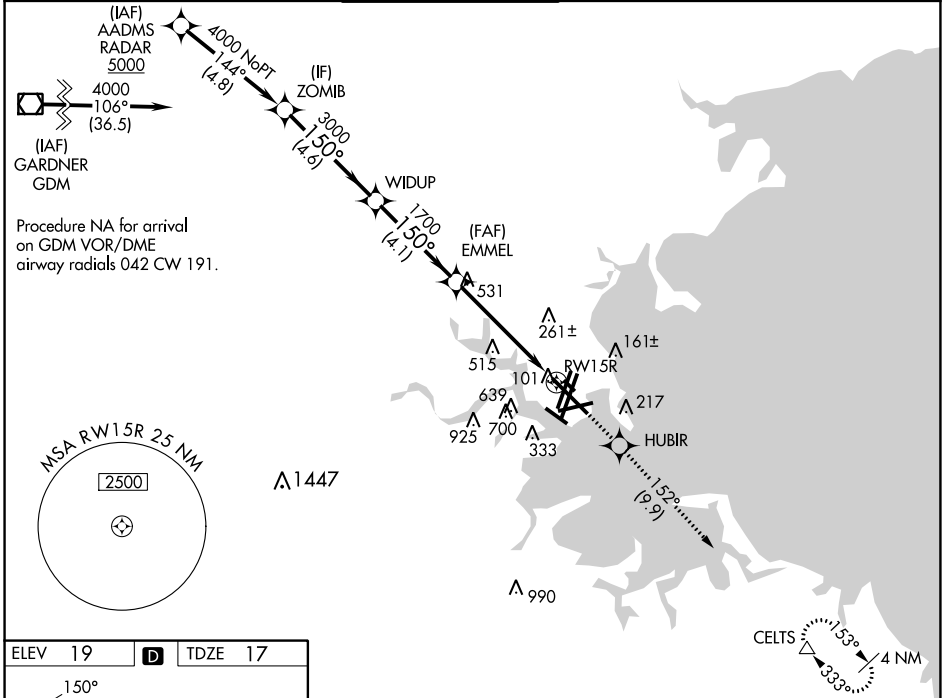
BOSTON, MASSACHUSETTS
GENERAL EDWARD LAWRENCE LOGAN INTL (BOS)
42°22'N-71°00'W

WAAS CH 42925 W15A	APP CRS 150°	Rwy ldg TDZE Apt Elev	9201 17 19
--	------------------------	-----------------------------	---------------------------------------

RNAV (GPS) RWY 15R

GENERAL EDWARD LAWRENCE LOGAN INTL (BOS)

RNP APCH.		MALSR		MISSED APPROACH: Climb to 3000 direct HUBIR and on track 152° to CELTS and hold.		
<p>▼ For uncompensated Baro-VNAV systems, LNAV/VNAV NA below -15°C or above 54°C. Circling NA to Rwy 14. Circling NA for Cats C and D west of Rwys 4L and 15R. For inop ALS, increase LNAV Cats C and D visibility to 1 3/8 SM.</p>						
D-ATIS 135.0	BOSTON APP CON 120.6 263.1	BOSTON TOWER 128.8 257.8 (WEST) 132.225 257.8 (EAST)		GND CON 121.75 121.9	CLNC DEL 121.65 257.8	CPDLC



ELEV 19		D	TDZE 17	
<p>VGSI and RNAV glidepath not coincident (VGSI Angle 3.00/TCH 71).</p>				
ZOMIB		3000	HUBIR	CELTS
4000		↑	tr 152°	△
WIDUP		*LNAV only.		
EMMEL		*1.7 NM to RWY15R		
1700		↓		
GP 3.00°		TCH 60		
4.6 NM		4.1 NM	3.4 NM	1.7 NM
CATEGORY	A	B	C	D
LPV DA	217/18			
LNAV/VNAV DA	567-1 1/8		550 (600-1 1/8)	
LNAV MDA	620/24	603 (700-1/2)		620-1 3/8 603 (700-1 3/8)
CIRCLING	940-1 1/4	1040-1 1/2	620-1 3/4	620-2
	921 (1000-1 1/4)	1021 (1100-1 1/2)	601 (700-1 3/4)	601 (700-2)

NE-1, 22 FEB 2024 to 21 MAR 2024

NE-1, 22 FEB 2024 to 21 MAR 2024

APP CRS	Rwy Idg	5000
331°	TDZE	19
	Apt Elev	19

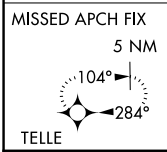
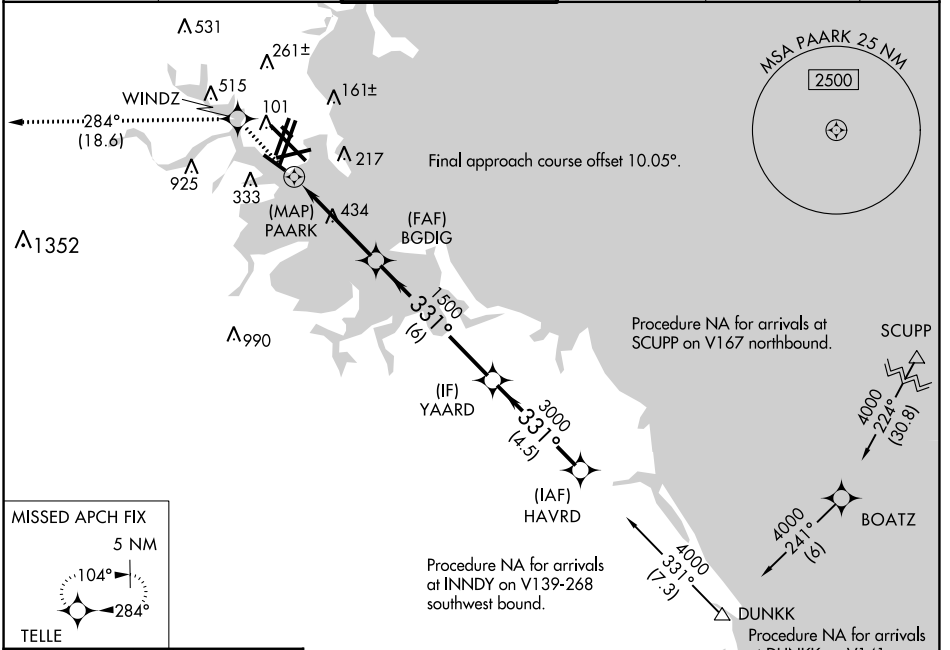
RNAV (GPS) RWY 32

GENERAL EDWARD LAWRENCE LOGAN INTL (BOS)

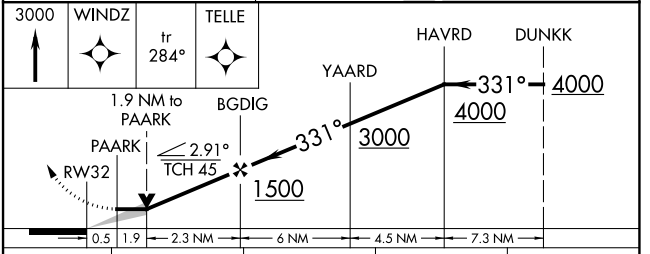
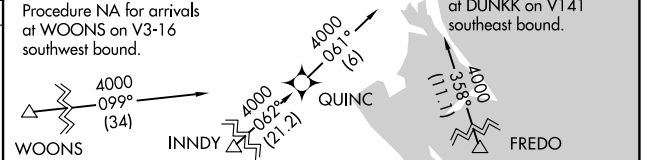
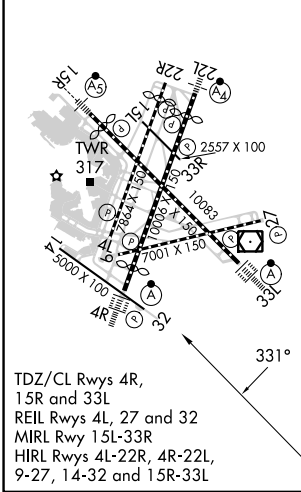
▼ DME/DME RNP-0.3 NA. Circling NA to Rwy 14.
▲ Circling NA for Cats C and D west of Rws 4L and 15R.

MISSED APPROACH: Climb to 3000 direct WINDZ and on track 284° to TELLE and hold.

D-ATIS	BOSTON APP CON	BOSTON TOWER	GND CON	CLNC DEL	CPDLC
135.0	120.6 263.1	128.8 257.8 (WEST) 132.225 257.8 (EAST)	121.75 121.9	121.65 257.8	



ELEV 19	D	TDZE 19
---------	----------	---------



CATEGORY	A	B	C	D
LNAV MDA	820-1 801 (900-1)	820-1¼ 801 (900-1¼)	820-2½	801 (900-2½)
C CIRCLING	960-1¼ 941 (1000-1¼)	1060-1½ 1041 (1100-1½)	820-2½	801 (900-2½)

NE-1, 22 FEB 2024 to 21 MAR 2024

NE-1, 22 FEB 2024 to 21 MAR 2024

WAAS CH 77738 W04B	APP CRS 037°	Rwy Idg 7864 TDZE 14 Apt Elev 19
--	------------------------	---

RNAV (GPS) RWY 4L

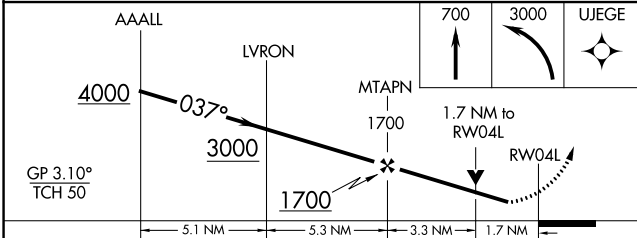
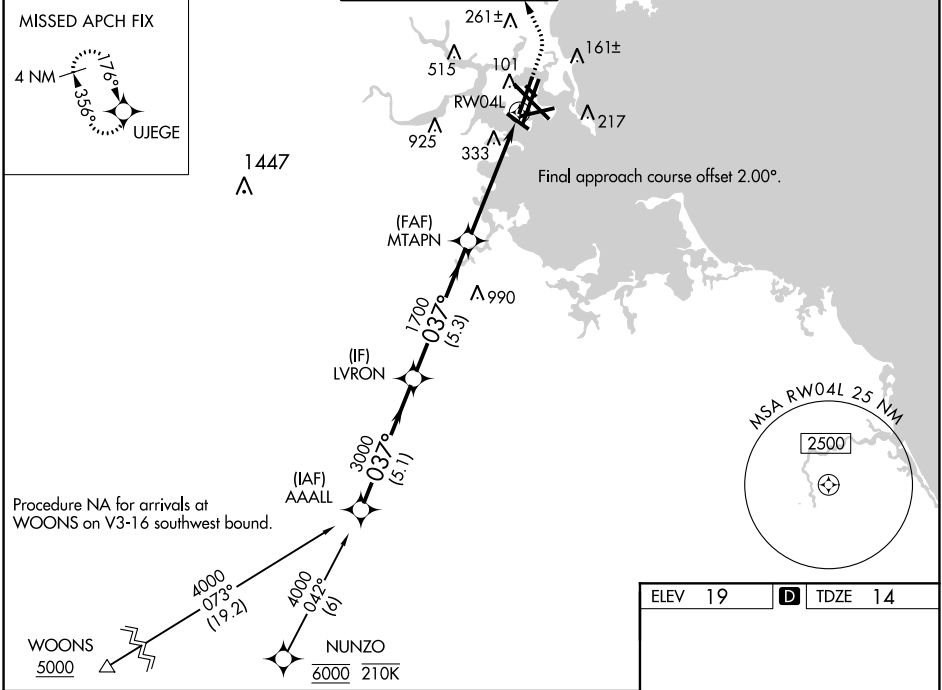
GENERAL EDWARD LAWRENCE LOGAN INTL (BOS)

RNP APCH - GPS.

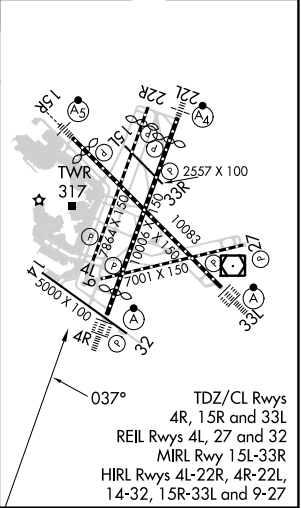
▼ For uncompensated Baro-VNAV systems, LNAV/VNAV NA below -14°C or above 54°C. Rwy 4L helicopter visibility reduction below RVR 4000 NA. When control tower reports tall vessels in approach area: increase LPV DA to 369 and all Cats visibility to RVR 5500. LPV and LNAV/VNAV NA when vessels taller than 137 feet present.

MISSED APPROACH: Climb to 700 then climbing left turn to 3000 direct UJEGE and hold, continue climb-in-hold to 3000.
Missed approach requires minimum climb of 425 feet per NM to 900.

D-ATIS 135.0	BOSTON APP CON 120.6 263.1	BOSTON TOWER 128.8 257.8 (WEST) 132.225 257.8 (EAST)	GND CON 121.75 121.9	CLNC DEL 121.65 257.8	CPDLC
------------------------	--------------------------------------	--	--------------------------------	---------------------------------	-------



ELEV 19	D	TDZE 14
---------	----------	---------



CATEGORY	A	B	C	D
LPV DA		318/45	304 (300-7%)	
LNAV/VNAV DA#		680-17%	666 (700-17%)	
LNAV/VNAV DA		768-2	754 (800-2)	
LNAV MDA	600/55	586 (600-1)	600-1¾	586 (600-1¾)

NE-1, 22 FEB 2024 to 21 MAR 2024

NE-1, 22 FEB 2024 to 21 MAR 2024

WAAS CH 50124 W04A	APP CRS 035°	Rwy Idg 8851 TDZE 18 Apt Elev 19
--	------------------------	---

RNAV (GPS) RWY 4R

GENERAL EDWARD LAWRENCE LOGAN INTL (BOS)

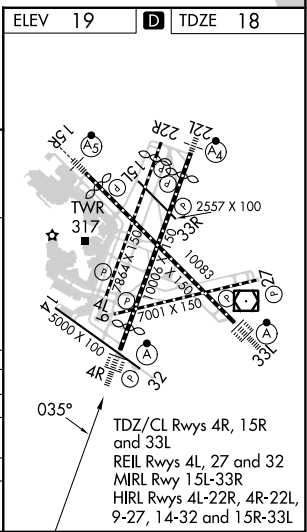
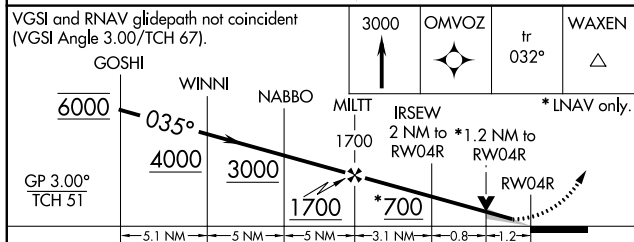
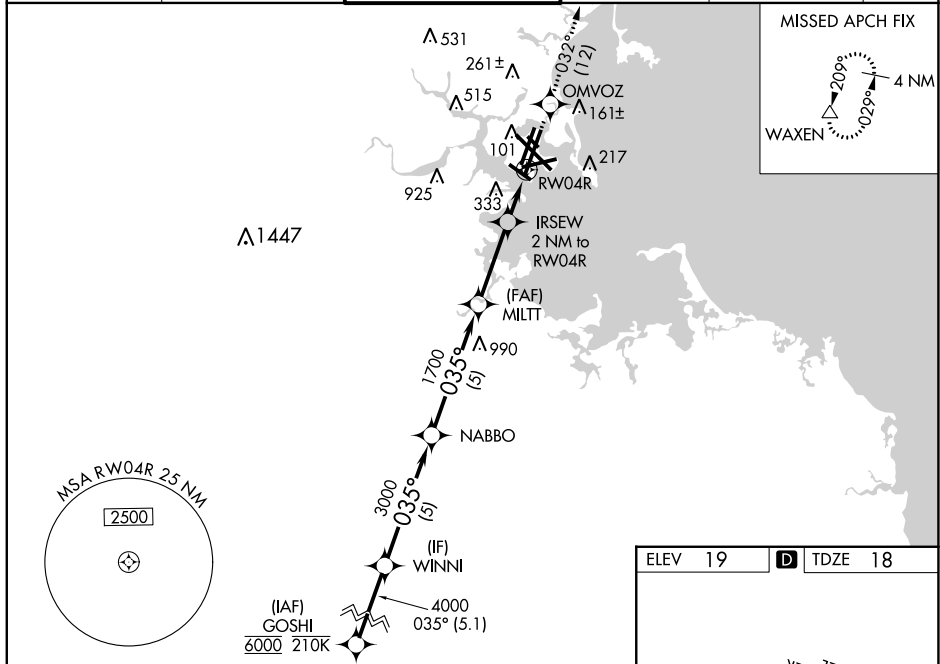
RNP APCH.

▼ Circling NA to Rwy 14. Circling NA for Cats C/D west of Rws 4L and 15R.
 ▲ For inop ALS increase LNAV/VNAV all Cats visibility to 1 3/8 SM. When control tower reports tall vessels in approach area: increase LPV DA to 374 and all Cats visibility to RVR 4000, increase LNAV Cat A/B visibility to RVR 4000; for inop ALS with tall vessels increase LNAV/VNAV all Cats visibility to 1 3/8 SM, LNAV Cat A/B visibility to RVR 5500 and LNAV Cat C/D to 1 3/8 SM. For tall vessels Rwy 4R helicopter visibility reduction below RVR 4000 NA. When vessels taller than 144 feet present, LPV and LNAV/VNAV NA. For uncompensated Baro-VNAV systems, LNAV/VNAV NA below -16°C or above 54°C.

ALSF-2

MISSED APPROACH:
Climb to 3000 direct OMVOZ and on track 032° to WAXEN and hold.

D-ATIS 135.0	BOSTON APP CON 120.6 263.1	BOSTON TOWER 128.8 257.8 (WEST) 132.225 257.8 (EAST)	GND CON 121.75 121.9	CLNC DEL 121.65 257.8	CPDLC
------------------------	--------------------------------------	--	--------------------------------	---------------------------------	-------



CATEGORY	A	B	C	D
LPV DA		218/18	200 (200-1/2)	
LNAV/VNAV DA		514/50	496 (500-1)	
LNAV MDA	480/24	462 (500-1/2)	480/50	462 (500-1)
C CIRCLING	940-1 1/4 921 (1000-1 1/4)	1040-1 1/2 1021 (1100-1 1/2)	620-1 3/4 601 (700-1 3/4)	620-2 601 (700-2)

NE-1, 22 FEB 2024 to 21 MAR 2024

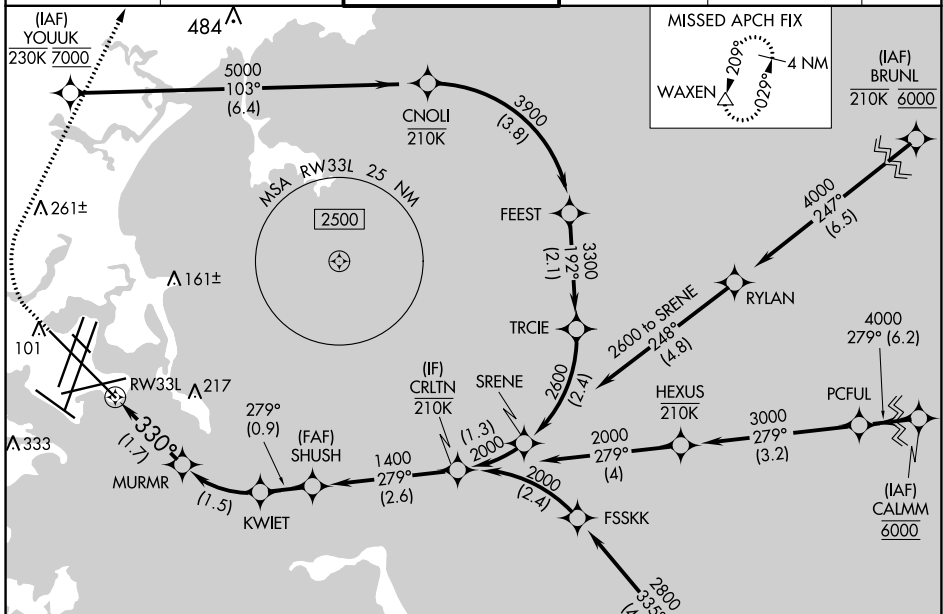
NE-1, 22 FEB 2024 to 21 MAR 2024

APP CRS	Rwy ldg	10083
330°	TDZE	16
	Apt Elev	19

RNAV (RNP) X RWY 33L

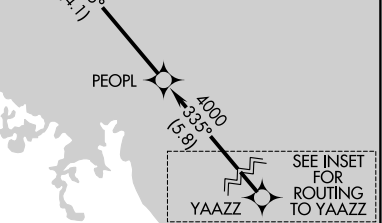
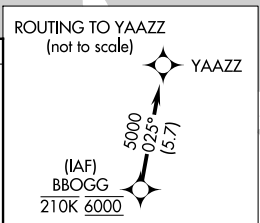
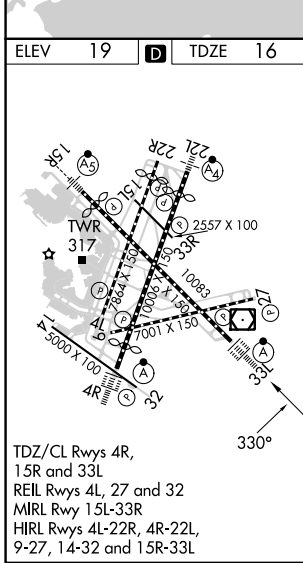
GENERAL EDWARD LAWRENCE LOGAN INTL (BOS)

RNP AR APCH. RF required.		BOSTON TOWER 128.8 257.8 (WEST) 132.225 257.8 (EAST)		GND CON 121.75 121.9	CLNC DEL 121.65 257.8	CPDLC
D-ATIS 135.0	BOSTON APP CON 120.6 263.1					



NE-1, 22 FEB 2024 to 21 MAR 2024

NE-1, 22 FEB 2024 to 21 MAR 2024



VGSI and RNAV glidepath not coincident (VGSI Angle 3.00/TCH 68).			
CRLTN	SHUSH	KWIET	MURMR
2000	1400	1099	612
GP 3.00°	1400	1099	612
TCH 52			330°
	2.6 NM	0.9 NM	1.5 NM
1.7 NM	RWY 33L		
CATEGORY	A	B	C
RNP 0.30 DA	273/24		257 (300-½)

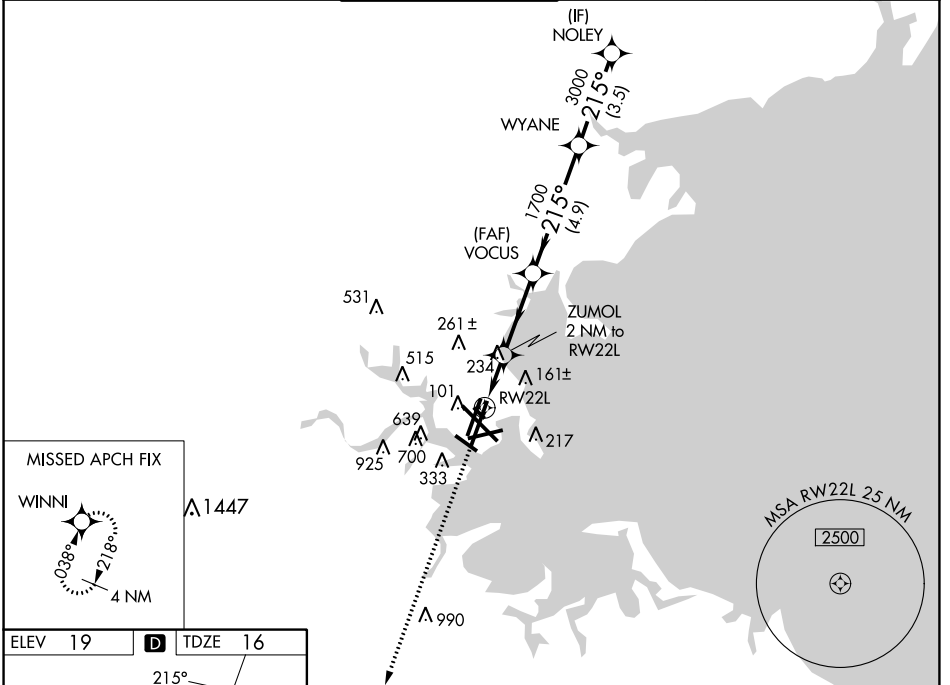
AUTHORIZATION REQUIRED

WAAS CH 45925 W22A	APP CRS 215°	Rwy Idg TDZE Apt Elev	8806 16 19
--	------------------------	-----------------------------	---------------------------------------

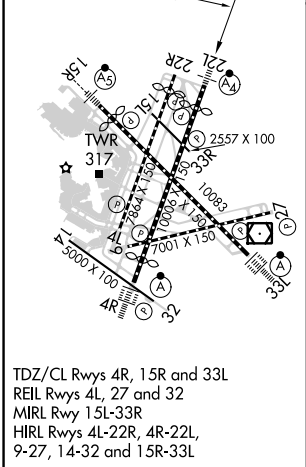
RNAV (GPS) X RWY 22L

GENERAL EDWARD LAWRENCE LOGAN INTL (BOS)

RNP APCH - GPS.		MALSF		MISSED APPROACH: Climb to 3000 direct WINNI and hold.	
<p>▼ Circling NA to Rwy 14. Circling NA for Cats C and D west of Rws 4L and 15R. For inop ALS, increase LNAV/VNAV Cat D visibility to RVR 6000 and LNAV Cat D visibility to 1½ SM. ▲ For uncompensated Baro-VNAV systems, LNAV/VNAV NA below -13°C or above 43°C.</p>					
D-ATIS 135.0	BOSTON APP CON 120.6 263.1	BOSTON TOWER 128.8 257.8 (WEST) 132.225 257.8 (EAST)	GND CON 121.75 121.9	CLNC DEL 121.65 257.8	CPDLC



ELEV 19	D	TDZE 16
---------	----------	---------



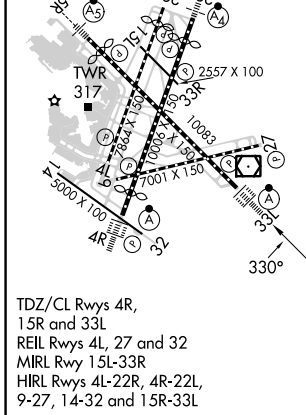
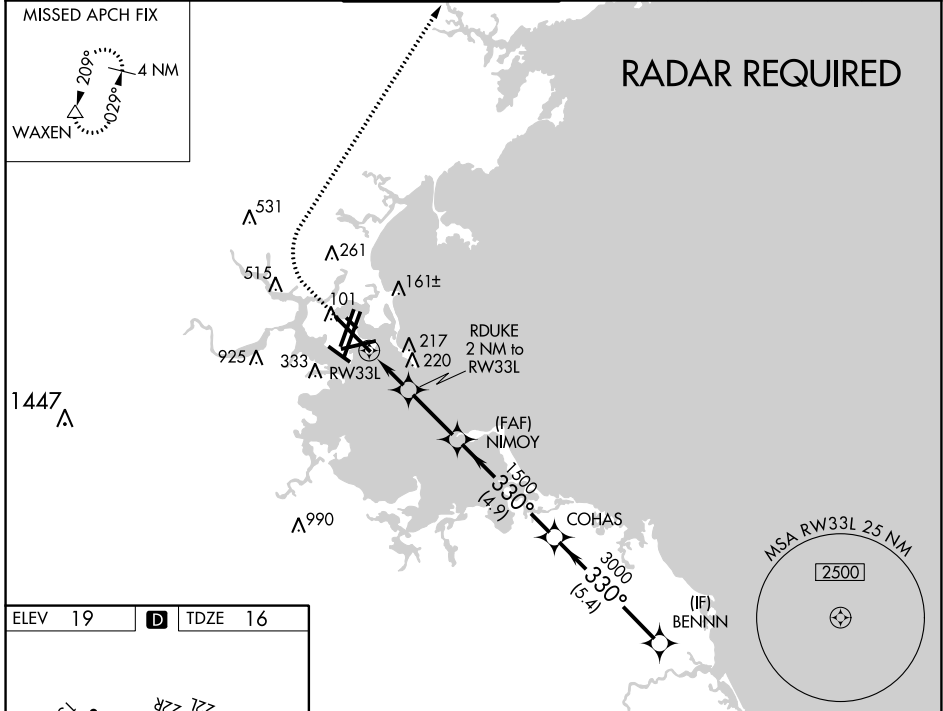
WINNI VOUCS WYANE NOLEY	VGSi and RNAV glidepath not coincident (VGSi Angle 3.00/TCH 71).			
	ZUMOL 2 NM to RW22L	VOUCS 1700	WYANE 3000	NOLEY 4000
	GP 3.00° TCH 55°			
	1.4 NM 0.6 3.1 NM 4.9 NM 3.5 NM			
CATEGORY	A	B	C	D
LPV DA		216/40	200 (200-¾)	
LNAV/VNAV DA		408/50	392 (400-1)	
LNAV MDA	540/40	524 (600-¾)	540-1¼	524 (600-1¼)
C CIRCLING	940-1¼ 921 (1000-1¼)	1040-1½ 1021 (1100-1½)	620-1¾ 601 (700-1¾)	620-2 601 (700-2)

WAAS CH 69525 W33A	APP CRS 330°	Rwy Idg 10083 TDZE 16 Apt Elev 19
--	------------------------	--

RNAV (GPS) Z RWY 33L

GENERAL EDWARD LAWRENCE LOGAN INTL (BOS)

RNP APCH - GPS.		ALSF-2		MISSED APPROACH: Climb to 600 then climbing right turn to 3000 direct WAXEN and hold.	
<p>⚠ For uncompensated Baro-VNAV systems, LNAV/VNAV NA below -14°C or above 54°C. Circling NA for Cats C and D west of Rwys 4L and 15R.</p>					
D-ATIS 135.0	BOSTON APP CON 120.6 263.1	BOSTON TOWER 128.8 257.8	GND CON 121.75 121.9	CLNC DEL 121.65 257.8	CPDLC



600	3000	WAXEN	VGSI and RNAV glidepath not coincident (VGSI Angle 3.00/TCH 68).	BENNN
↑	↷	△		
		1.1 NM to RW33L	RDUKE 2 NM to RW33L	1500
				700
		1.1 NM	0.9 NM	2.5 NM
				4.9 NM
				5.4 NM
				4000
				330°
				3000
				GP 3.00° TCH 57

CATEGORY	A	B	C	D
LPV DA	216/18		200 (200-½)	
LNAV/VNAV DA	324/24		308 (400-½)	
LNAV MDA	440/24	424 (500-½)	440/40	424 (500-¾)
CIRCLING	940-1¼ 921 (1000-1¼)	1040-1½ 1021 (1100-1½)	620-1¾ 601 (700-1¾)	620-2 601 (700-2)

NE-1, 22 FEB 2024 to 21 MAR 2024

NE-1, 22 FEB 2024 to 21 MAR 2024

VOR/DME BOS 112.7 Chan 74	APP CRS 310°	Rwy Idg TDZE Apt Elev N/A N/A 19
---	------------------------	--

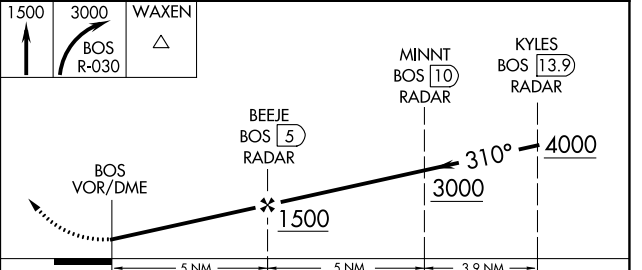
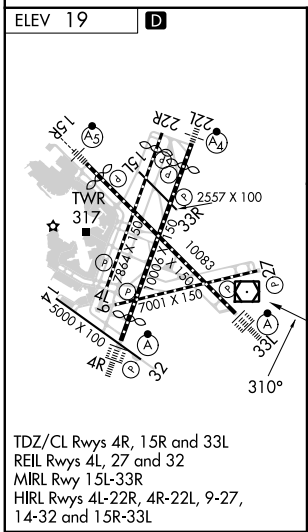
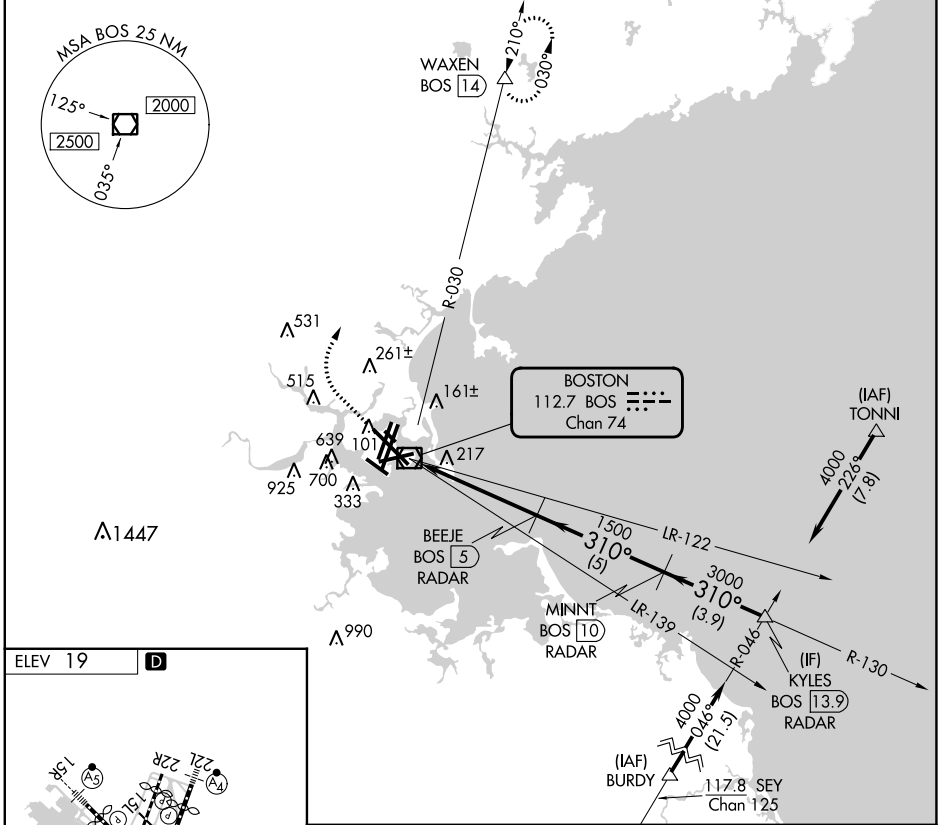
VOR-A

GENERAL EDWARD LAWRENCE LOGAN INTL (BOS)

DME required.		BOSTON TOWER 128.8 257.8 (WEST) 132.225 257.8 (EAST)		GND CON 121.75 121.9	CLNC DEL 121.65 257.8	CPDLC
D-ATIS 135.0	BOSTON APP CON 120.6 263.1					

▼ Circling NA to Rwy 14. Circling NA for Cats C and D west of Rwys 4L and 15R.
▲

MISSED APPROACH: Climb to 1500 then climbing right turn to 3000 on BOS VOR/DME R-030 to WAXEN BOS 14 DME and hold.



CATEGORY	A	B	C	D
C CIRCLING	940-1¼ 921 (1000-1¼)	1040-1½ 1021 (1100-1½)	620-1¾ 601 (700-1¾)	620-2 601 (700-2)

NE-1, 22 FEB 2024 to 21 MAR 2024

NE-1, 22 FEB 2024 to 21 MAR 2024