

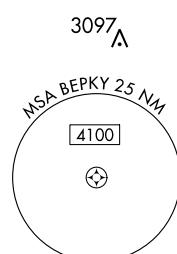
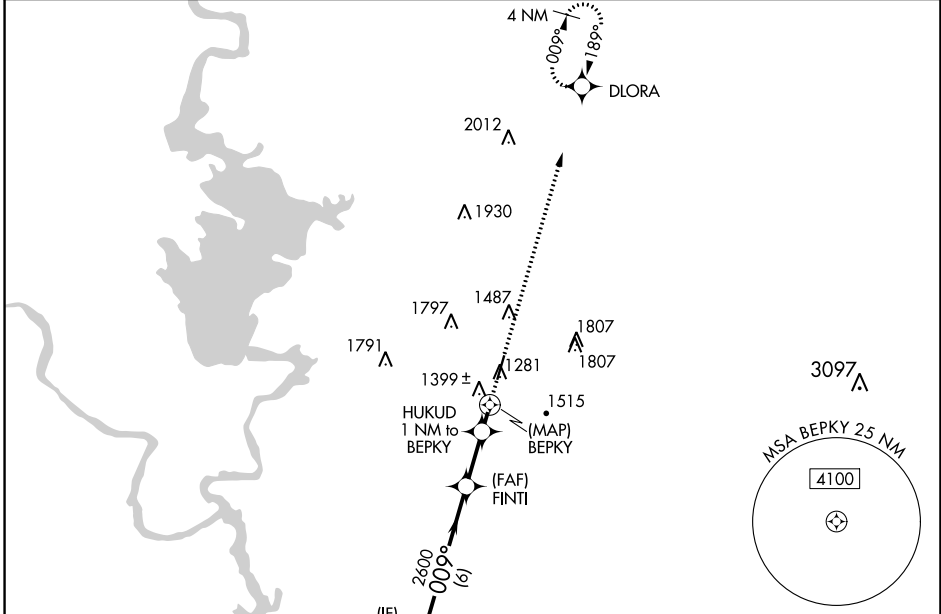
APP CRS 009°	Rwy Idg TDZE Apt Elev	5001 1270 1284
------------------------	-----------------------------	---

RNAV (GPS) RWY 1

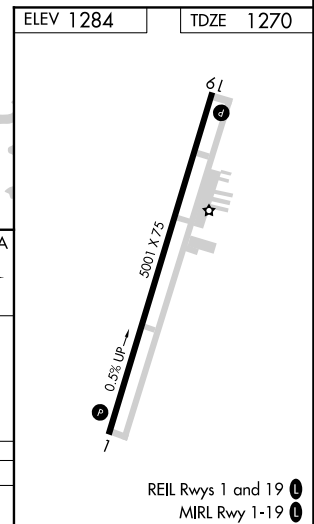
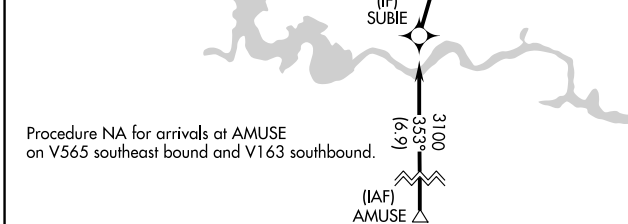
BURNET MUNI KATE CRADDOCK FIELD (BMQ)

RNP APCH.	MISSED APPROACH: Climb to 3500 direct DLORA and hold.
<p>▼ Rwy 1 helicopter visibility reduction below 3/4 SM NA.</p> <p>▲ When local altimeter setting not received, use Lago Vista altimeter setting and increase all MDA 60 feet.</p>	

ASOS 119.925	HOUSTON CENTER 132.35 317.5	UNICOM 122.8 (CTAF) 0
------------------------	---------------------------------------	---------------------------------



Procedure NA for arrivals at AMUSE on V565 southeast bound and V163 southbound.



SUBIE	FINTI		HUKUD 1 NM to BEPKY		DLORA
3100	2600	1940	3500		
6 NM		2 NM	1 NM	1 NM	

CATEGORY	A	B	C	D
LNAV MDA	1660-1 1/4		390 (400-1 1/4)	NA

SC-3, 05 NOV 2020 to 03 DEC 2020

SC-3, 05 NOV 2020 to 03 DEC 2020

APP CRS 189°	Rwy Idg 5001
	TDZE 1284
	Apt Elev 1284

RNAV (GPS) RWY 19

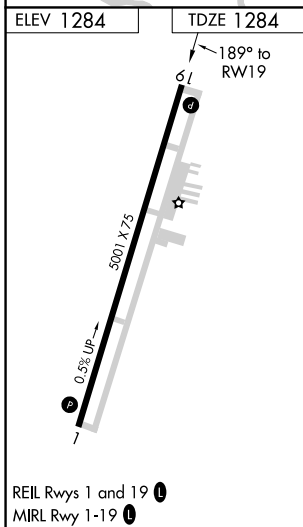
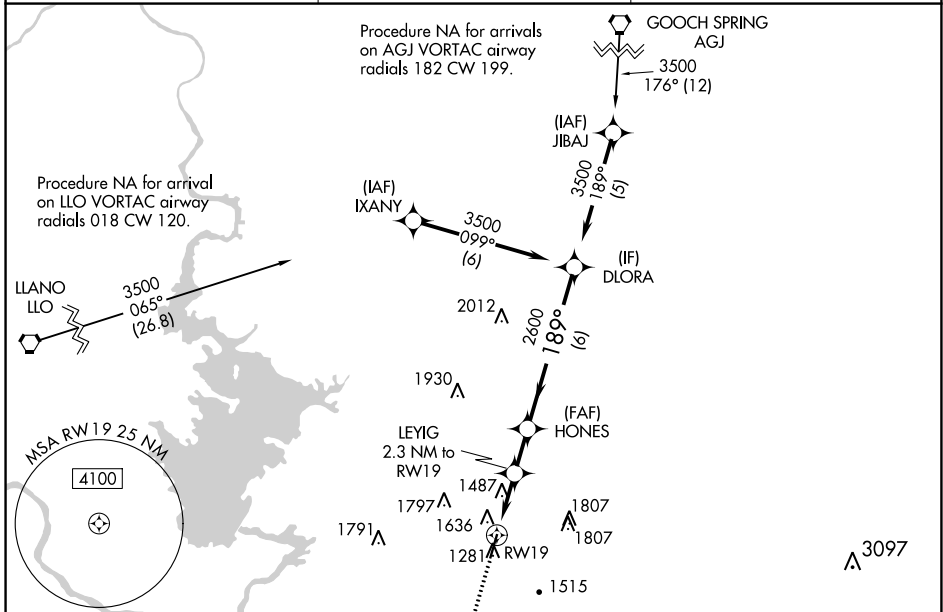
BURNET MUNI KATE CRADDOCK FIELD (BMQ)

RNP APCH.

⚠ When local altimeter setting not received, use Lago Vista altimeter setting and increase all MDA 60 feet and increase LNAV Cats A/B/C visibilities ¼ SM. Procedure NA at night. Rwy 19 helicopter visibility reduction below 1 SM NA.

MISSED APPROACH: Climb to 3100 direct FINTI then via track 180° to AMUSE.

ASOS 119.925	HOUSTON CENTER 132.35 317.5	UNICOM 122.8 (CTAF) 1
------------------------	---------------------------------------	---------------------------------



3100	FINTI	AMUSE		
	⬆	tr 180°		
			HONES	DLORA
			2600	3500
			2060	
			2.3 NM	1.7 NM
			6 NM	
CATEGORY	A	B	C	D
LNAV MDA	1940-1	656 (700-1)	1940-1¾ 656 (700-1¾)	NA

SC-3, 05 NOV 2020 to 03 DEC 2020

SC-3, 05 NOV 2020 to 03 DEC 2020