

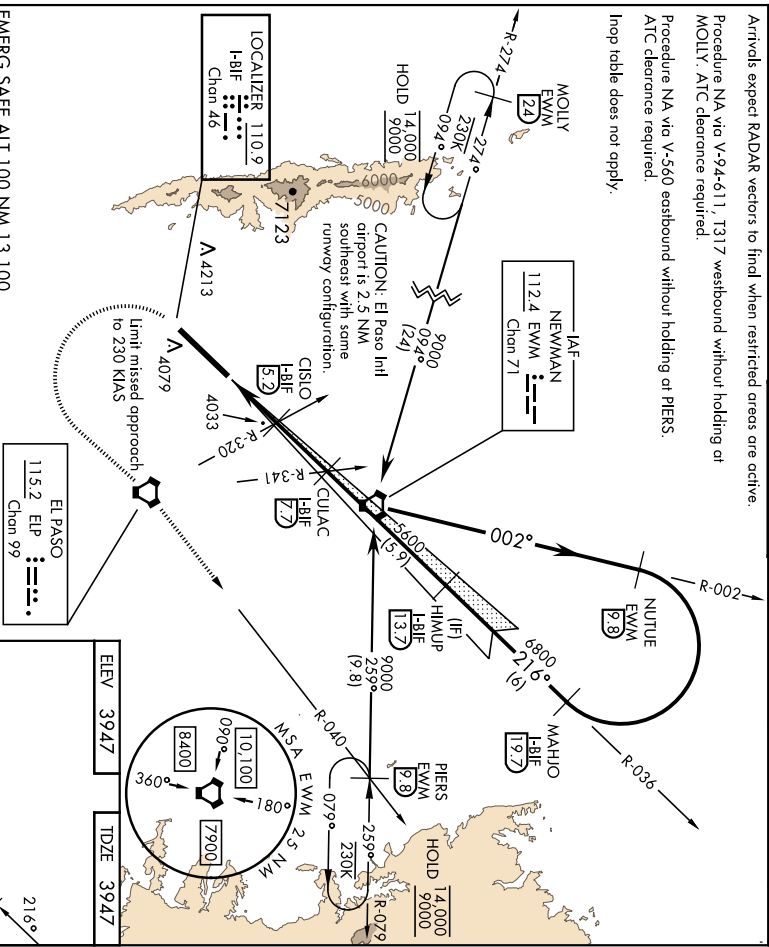
FBF IOC/DME 110.9 Chn 46	APCH CRS 216°	Rwy Idg 13,554	[USA]		BIGGS AAF (KBIF)	
EL PASO ATIS 120.0 254.3		EL PASO APP (S of V16) 119.15 353.5	TOWER * 127.90	SSAIR A3	MISSED APPROACH: Climb to 4600, then climbing left turn to 9000 direct ELP VORTAC. Proceed outbound ELP R-040 to PERS intersection and hold. Continue climb in hold to 9000.	GND CON 121.6 251.125
*Circling NA for CAT DE NW of Rwy 4.		APpt Elev 3947	342.25		EL PASO CLNC DEL 125.0 379.1	ASR

Arrivals expect RADAR vectors to find when restricted areas are active.

Procedure NA via V-9-4-611, 1317 westbound without holding at MOLLY. AIC clearance required.

Procedure NA via V-560 eastbound without holding or PERS. AIC clearance required.

Hold table does not apply.



ELEV	3947	TDZE	3947
------	------	------	------

EMERG SAFE ALT 100 NM 13,100

4600	9000	ELP	EL PASO EWP Chen 99			
VGS1 and glidepath not coincident (VGS1 Angle 3.00/TCH 7.5).						
CATEGORY		A	B	C	D	E
S-ILS 22	4147-¾	200	(200-¾)			
S-LOC 22	4300-1	353	(400-1)			
CIRCLING*	4380-1	4400-1	4550-1¾	4560-2	4560-2¼	
	433 (500-1)	453 (500-1)	613 (700-1¾)	613 (700-2)	613 (700-2¼)	
HIRL Rwy 04-22		FAF to MAP 5.0 NM				
REIL Rwy 04, 22						
Knots	60	90	120	150	180	
Min:Sec	5:00	3:20	2:30	2:00	1:40	

RNAV (GPS) RWY 22

BIGGS AAF (KBIF)

[USA]

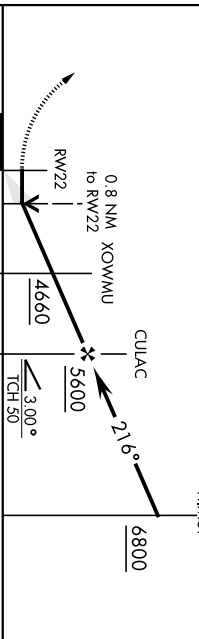
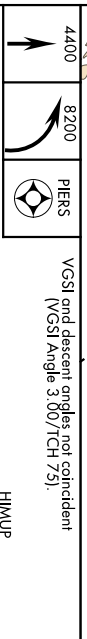
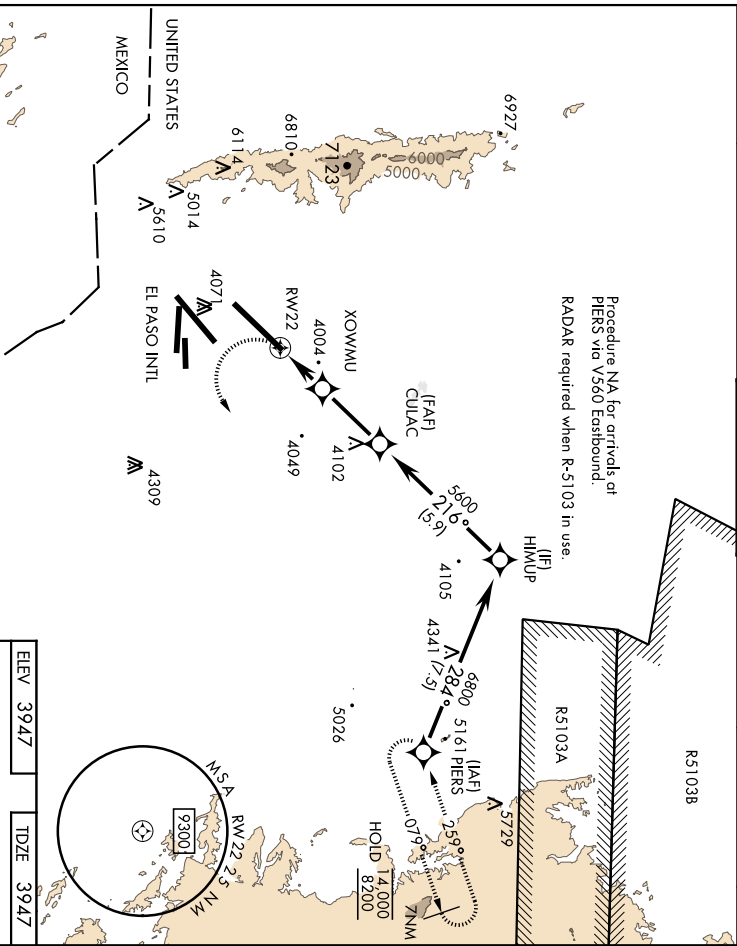
ARCH CRS Rwy. Hgt **13,554**
216° TDZE **3947**
 Apxl Elev **3947**

RNP APCH
▲ * When ALS inop, increase CAT AB vis to 1 mile.
 CAT CD vis to ½ mile.
 ** Circling not authorized for CAT D West of Rwy 4-22.

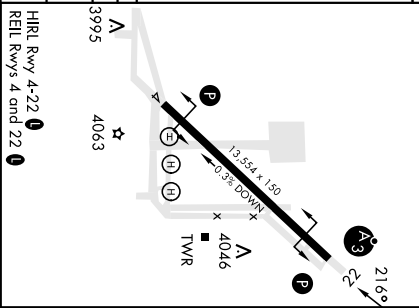
SSALR

MISSED APPROACH: Climb to 4400 then climbing left turn to 8200 direct PIER5 and hold, continue climb-in-hold to 8200.

ATIS 120.0 254.3	EL PASO APP CON 119.15 383.5 S of V16 124.25 298.85 N of V16	TOWER * 127.9 0 342.25	GND CON 121.6 251.125	EL PASO CLNC DEL 125.0 379.1	ASR
-----------------------------------	---	---	--	---	------------



CATEGORY UNAV MDA *	A	B	C	D
4260-¾	313	(400-¾)		



DIRCLING **	4400-1	453	(500-1)	4540-1½	593	(600-1½)	4540-2	593	(600-2)
--------------------	---------------	------------	----------------	----------------	------------	-----------------	---------------	------------	----------------

FORT BLISS, TEXAS
 Amdt 1A 22APR21

BIGGS AAF (KBIF)
RNAV (GPS) RWY 22

VOR or TACAN RMY 22

[USA]

BIGGS AAF (KBIF)

EWMA VORTAC 112.4 Chan 71	APCH CRS 210°	Req'd Idg TDZE Appt Elev 3947 3947 3947
---	-------------------------	---

✎ * Circling CAT DE not authorized W of Rwy 4-22.

SSAIR
 **A3**
 EWM VORTAC and hold, continue climb-in-hold to 8000. TACAN only aircraft continue on EWM R-079 to PERS INT/ EWM V & DME and hold, continue climb-in-hold to 9000).

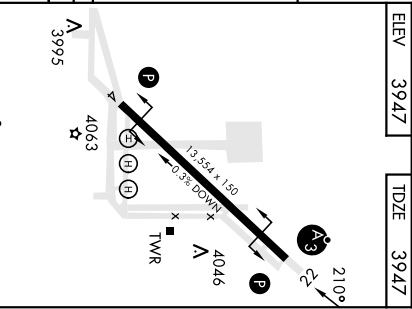
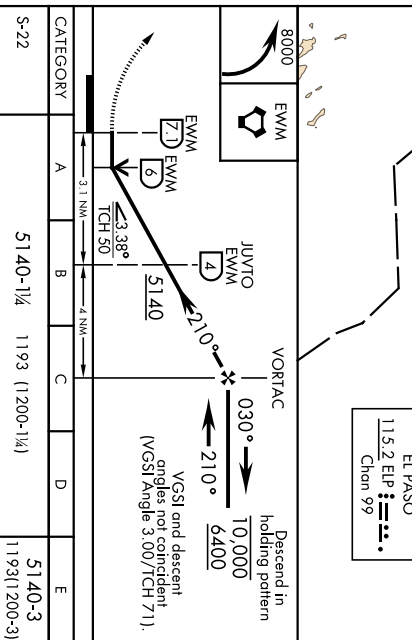
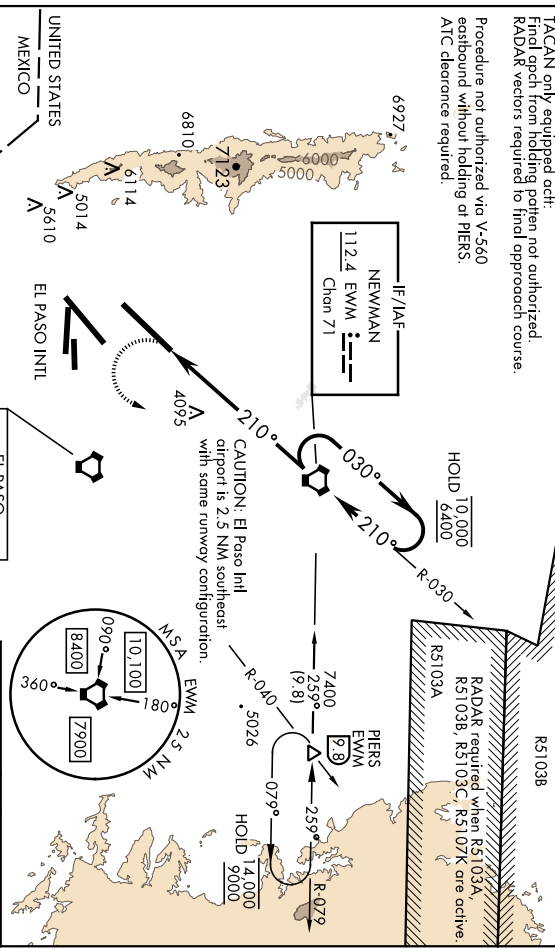
MISSED APPROACH: Climbing left turn to 8000 direct EWM VORTAC and hold, continue climb-in-hold to 8000. TACAN only aircraft continue on EWM R-079 to PERS INT/ EWM V & DME and hold, continue climb-in-hold to 9000).

ATIS	EL PASO APP CON S of V16 119.15 353.5 N of V16 124.25 298.85	TOWER * 127.9  342.25
------	--	---

	GND CON	EL PASO CLNC DEL	ASR
	121.6 251.125	125.0 379.1	

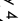

Use El Paso Intl altimeter setting. Inop table does not apply. Arrivals expect RADAR vectors to final when restricted cross are active.	TACAN only equipped a/c: Final approach from holding pattern not authorized. RADAR vectors required to final approach course.
---	---

Procedure not authorized via V-560 eastbound without holding at PERS.



CATEGORY	A	B	C	D	E
	5140-1/4 1193 (1200-1/4)	5140-1/2 1193 (1200-1/2)	5140-3 1193 (1200-3)	5140-3 1193 (1200-3)	5140-3 1193 (1200-3)
S-22	JUVTO FIX MINIMUMS				
S-22	4380-1	433 (500-1)	4380-1/4	433 (500-1/4)	

ELEV	3947	TDZE	3947
------	------	------	------

HPRL Rwy 4-22 
KEIL Rlys 4 and 22 
FAF to MAAP 2.1 NM

Knots	60	90	120	150	180
Min:Sec	7:06	4:44	3:33	2:50	2:22

FORT BLISS, TEXAS
 BIGGS AAF (KBIF)
 VOR or TACAN RMY 22
 Amdt 9 05OCT23
 31° 51' N - 106° 23' W