

WAAS CH <b>99442</b> W <b>17A</b>	APP CRS <b>171°</b>	Rwy Idg <b>6299</b> TDZE <b>3013</b> Apt Elev <b>3055</b>
---	------------------------	---

# RNAV (GPS) RWY 17

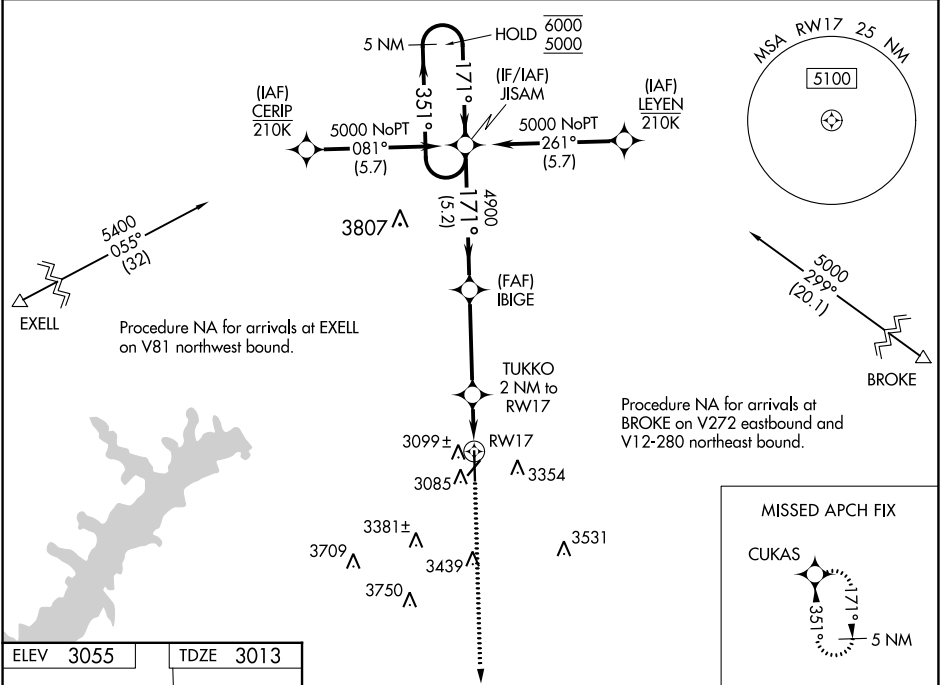
HUTCHINSON COUNTY (BGD)

RNP APCH.

**⚠** For uncompensated Baro-VNAV systems, LNAV/VNAV NA below -14°C or above 51°C.

MISSED APPROACH: Climb to 5100 direct CUKAS and hold.

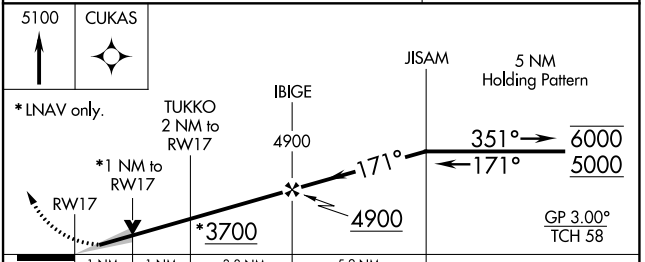
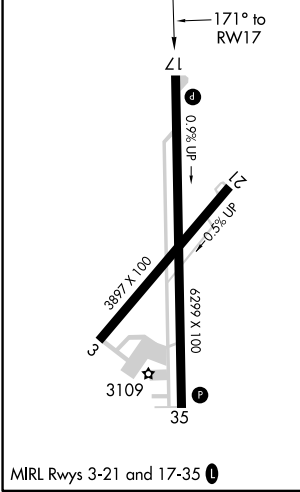
ASOS <b>118.325</b>	AMARILLO APP CON ★ <b>119.5 307.0</b>	UNICOM <b>123.0 (CTAF) 0</b>
------------------------	--	---------------------------------



SC-2, 11 AUG 2022 to 08 SEP 2022

SC-2, 11 AUG 2022 to 08 SEP 2022

ELEV 3055	TDZE 3013
-----------	-----------



CATEGORY	A	B	C	D
LPV DA		3263-1	250 (300-1)	
LNAV/VNAV DA		3280-1	267 (300-1)	
LNAV MDA		3360-1	347 (400-1)	
<b>C</b> CIRCLING	3620-1 565 (600-1)	3660-1 605 (700-1)	3760-2 705 (800-2)	3760-2½ 705 (800-2½)

WAAS CH <b>53442</b> <b>W35A</b>	APP CRS <b>351°</b>	Rwy Idg TDZE Apt Elev	<b>6299</b> <b>3055</b> <b>3055</b>
--	------------------------	-----------------------------	---

# RNAV (GPS) RWY 35

HUTCHINSON COUNTY (B.G.D)

RNP APCH.

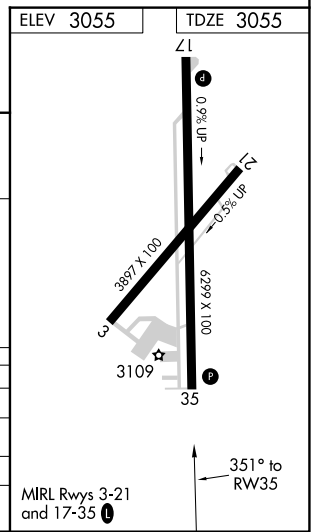
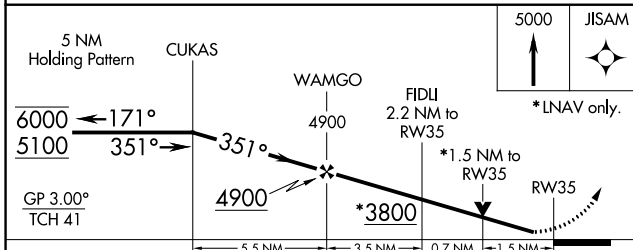
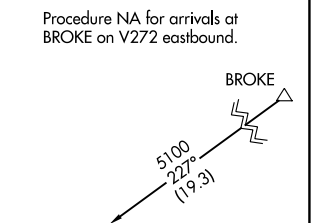
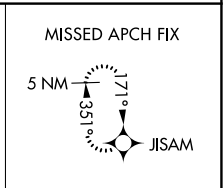
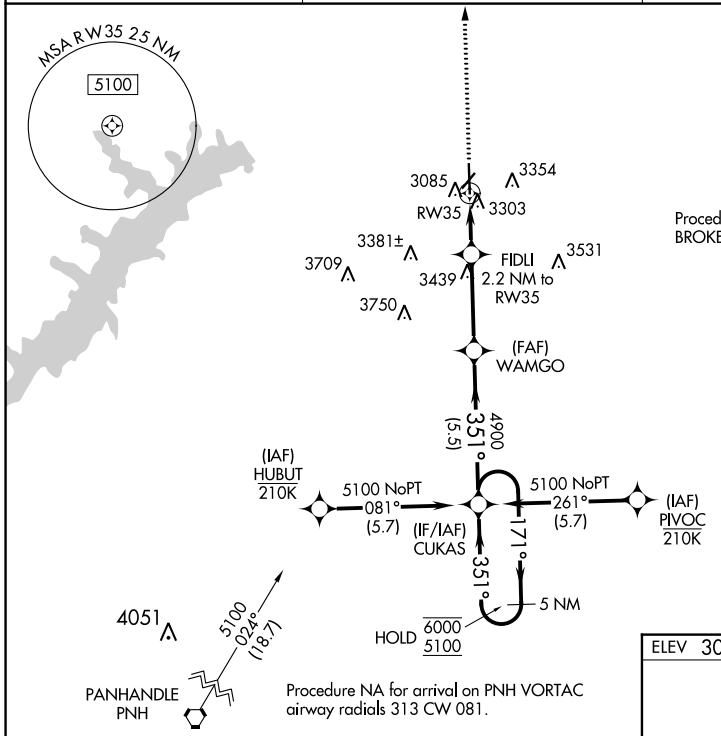
**⚠** Rwy 35 helicopter visibility reduction below 3/4 SM NA. For uncompensated Baro-VNAV systems, LNAV/VNAV NA below -14°C or above 54°C.

MISSED APPROACH: Climb to 5000 direct JISAM and hold.

ASOS  
**118.325**

AMARILLO APP CON ★  
**119.5 307.0**

UNICOM  
**123.0 (CTAF) ①**



CATEGORY	A	B	C	D
LPV DA		3305-1	250 (300-1)	
LNAV/VNAV DA		3554-1 3/8	499 (500-1 3/8)	
LNAV MDA	3560-1	505 (600-1)	3560-1 3/8	505 (600-1 3/8)
CIRCLING	3620-1 565 (600-1)	3660-1 605 (700-1)	3760-2 705 (800-2)	3760-2 1/4 705 (800-2 1/4)