

WAAS CH 99442 W 17A	APP CRS 171°	Rwy Idg 6299 TDZE 3013 Apt Elev 3055
---	------------------------	---

RNAV (GPS) RWY 17

HUTCHINSON COUNTY (BGD)

RNP APCH.

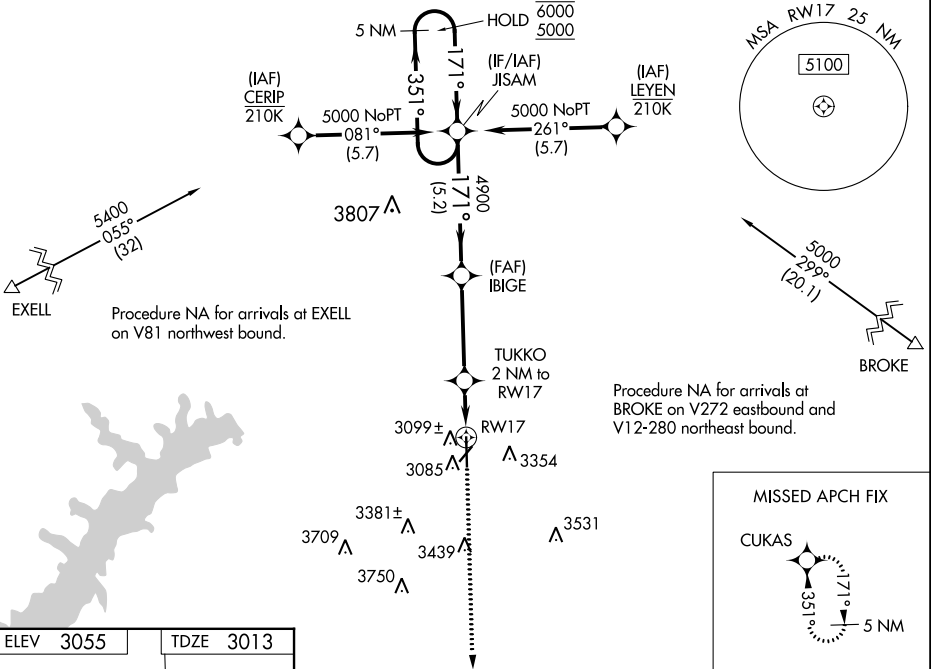
⚠ For uncompensated Baro-VNAV systems, LNAV/VNAV NA below -14°C or above 51°C.

MISSED APPROACH: Climb to 5100 direct CUKAS and hold.

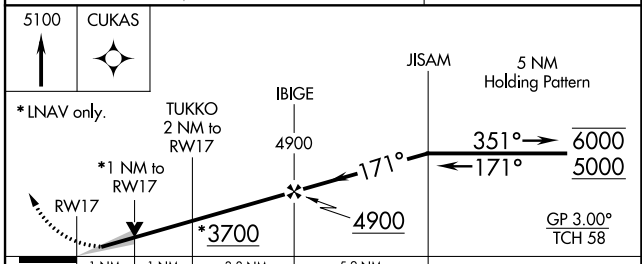
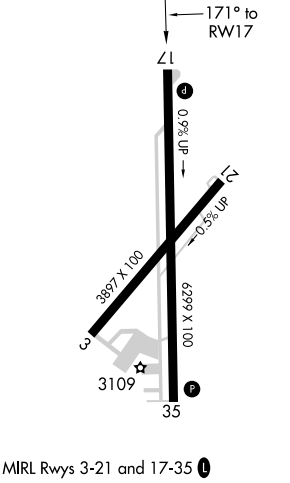
ASOS
118.325

AMARILLO APP CON ★
119.5 307.0

UNICOM
123.0 (CTAF) 0



ELEV 3055	TDZE 3013
-----------	-----------



CATEGORY	A	B	C	D
LPV DA		3263-1	250 (300-1)	
LNAV/VNAV DA		3280-1	267 (300-1)	
LNAV MDA		3360-1	347 (400-1)	
C CIRCLING	3620-1 565 (600-1)	3660-1 605 (700-1)	3760-2 705 (800-2)	3760-2½ 705 (800-2½)

SC-2, 11 AUG 2022 to 08 SEP 2022

SC-2, 11 AUG 2022 to 08 SEP 2022

WAAS CH 53442 W35A	APP CRS 351°	Rwy Idg TDZE Apt Elev	6299 3055 3055
--	------------------------	-----------------------------	---

RNAV (GPS) RWY 35

HUTCHINSON COUNTY (B.G.D)

RNP APCH.

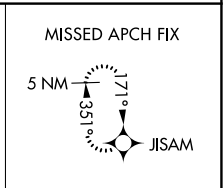
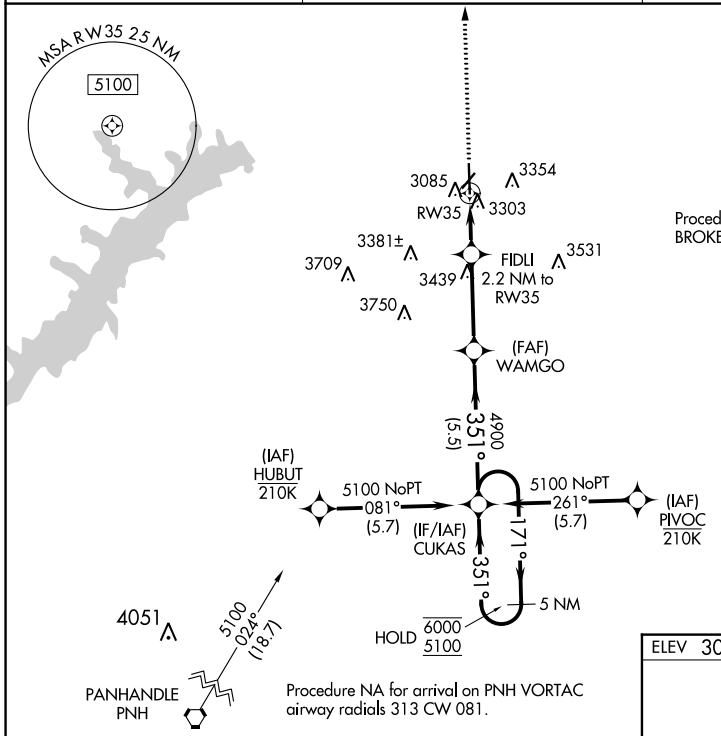
⚠ Rwy 35 helicopter visibility reduction below 3/4 SM NA. For uncompensated Baro-VNAV systems, LNAV/VNAV NA below -14°C or above 54°C.

MISSED APPROACH: Climb to 5000 direct JISAM and hold.

ASOS
118.325

AMARILLO APP CON ★
119.5 307.0

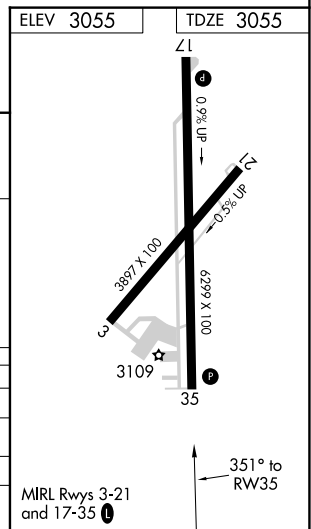
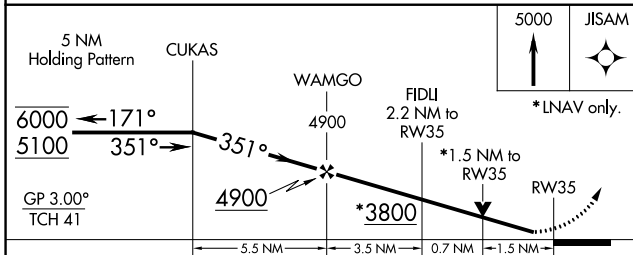
UNICOM
123.0 (CTAF) ①



Procedure NA for arrivals at BROKE on V272 eastbound.

SC-2, 11 AUG 2022 to 08 SEP 2022

SC-2, 11 AUG 2022 to 08 SEP 2022



CATEGORY	A	B	C	D
LPV DA	3305-1 250 (300-1)			
LNAV/VNAV DA	3554-1 3/8 499 (500-1 3/8)			
LNAV MDA	3560-1	505 (600-1)	3560-1 3/8	505 (600-1 3/8)
C CIRCLING	3620-1 565 (600-1)	3660-1 605 (700-1)	3760-2 705 (800-2)	3760-2 1/4 705 (800-2 1/4)

NAME ALTERNATE MINIMUMS

DALLAS-FORT WORTH, TX

DALLAS-FORT WORTH

INTL (DFW).....**CONVERGING ILS Rwy 13R¹**
CONVERGING ILS Rwy 31R²
ILS or LOC Rwy 18R³

¹Categories A, B, C, 900-2½.

²ILS, 1100-4.

³ILS, 700-2.

DECATUR, TX

DECATUR MUNI (LUD).....**RNAV (GPS) Rwy 17**
RNAV (GPS) Rwy 35

NA when local weather not available.

DENTON, TX

DENTON

ENTERPRISE (DTO).....**RNAV (GPS) Rwy 18L**
RNAV (GPS) Rwy 18R
RNAV (GPS) Rwy 36L
RNAV (GPS) Rwy 36R

NA when local weather not available.

Category D, 800-2½.

DUMAS, TX

MOORE

COUNTY (DUX).....**RNAV (GPS) Rwy 1**
RNAV (GPS) Rwy 19

NA when local weather not available.

Category D, 800-2½.

EASTLAND, TX

EASTLAND

MUNI (ETN).....**RNAV (GPS) Rwy 17**
RNAV (GPS) Rwy 35

NA when local weather not available.

Category B, 900-2; Category C, 900-2½.

FORT WORTH, TX

FORT WORTH

ALLIANCE (AFW).....**ILS or LOC Rwy 16L¹**
ILS or LOC Rwy 34R¹
RNAV (GPS) Rwy 16L²
RNAV (GPS) Rwy 16R²
RNAV (GPS) Rwy 34R²

¹LOC, Category E, 800-2½.

²Category E, 800-2½.

FORT WORTH MEACHAM

INTL (FTW).....**ILS or LOC Rwy 16**
RNAV (GPS) Rwy 16
RNAV (GPS) Rwy 34

Category D, 800-2½.

FORT WORTH

SPINKS (FWS).....**RNAV (GPS) Rwy 18R**
RNAV (GPS) Rwy 36L

NA when local weather not available.

NAME ALTERNATE MINIMUMS

GAINESVILLE, TX

GAINESVILLE

MUNI (GLE).....**RNAV (GPS) Rwy 18**
RNAV (GPS) Rwy 36¹

Category D, 800-2½.

¹NA when local weather not available.

GILMER, TX

FOX STEPHENS FLD / GILMER

MUNI (JXI).....**RNAV (GPS) Rwy 18**
RNAV (GPS) Rwy 36

NA when local weather not available.

Category C, 800-2½.

GRAHAM, TX

GRAHAM MUNI (RPH).....**RNAV (GPS) Rwy 3**
RNAV (GPS) Rwy 21

NA when local weather not available.

GRANBURY, TX

GRANBURY

RGNL (GDJ).....**RNAV (GPS) Rwy 14**

NA when local weather not available.

GRAND PRAIRIE, TX

GRAND PRAIRIE

MUNI (GPM).....**RNAV (GPS) Rwy 36**
VOR Rwy 36

NA when local weather not available.

Categories A, B, 800-2½.

GREENVILLE, TX

MAJORS (GVT).....

ILS Y or LOC Y Rwy 17¹²
ILS Z or LOC Z Rwy 17¹²³
RNAV (GPS) Rwy 17³⁴
RNAV (GPS) Rwy 35³⁴
TACAN Rwy 17³⁴
TACAN Rwy 35³⁴
VOR/DME Rwy 17³⁴

¹NA when control tower closed.

²LOC, Category D, 800-2½; Category E, 800-2½.

³NA when local weather not available.

⁴Category D, 800-2½; Category E, 800-2½.

HENDERSON, TX

RUSK COUNTY (RFI).....

RNAV (GPS) Rwy 17

NA when local weather not available.

Category C, 800-2½.

HEREFORD, TX

HEREFORD

MUNI (HRX).....**RNAV (GPS) Rwy 2**
RNAV (GPS) Rwy 20

NA when local weather not available.

Category D, 900-2½.

11 AUG 2022 to 08 SEP 2022

11 AUG 2022 to 08 SEP 2022

NAME ALTERNATE MINIMUMS

HILLSBORO, TX

HILLSBORO
MUNI (INJ).....**RNAV (GPS) Rwy 16**
RNAV (GPS) Rwy 34

NA when local weather not available.

LAMESA, TX

LAMESA
MUNI (LUV).....**RNAV (GPS) Rwy 16**
RNAV (GPS) Rwy 34

Category D, 900-2¼.

LANCASTER, TX

LANCASTER
RGNL (LNC).....**RNAV (GPS) Rwy 31**
NA when local weather not available.
Category C, 800-2¼; Category D, 800-2½.

LONGVIEW, TX

EAST TEXAS
RGNL (GGG).....**ILS or LOC Rwy 13¹**
RNAV (GPS) Rwy 13²
RNAV (GPS) Rwy 18³
RNAV (GPS) Rwy 31²
RNAV (GPS) Rwy 36³
VOR/DME or TACAN Rwy 13²
VOR/DME or TACAN Rwy 31²

NA when local weather not available.

¹ILS, LOC, Category D, 800-2¼;

Category E, 800-2½.

²Category D, 800-2¼; Category E, 800-2½.

³Category D, 800-2¼.

LUBBOCK, TX

LUBBOCK PRESTON SMITH
INTL (LBB).....**ILS or LOC Rwy 17R¹**
ILS or LOC Rwy 26¹
RNAV (GPS) Rwy 8²
RNAV (GPS) Rwy 26²
RNAV (GPS) Y Rwy 17R²
RNAV (GPS) Y Rwy 35L²
VOR/DME or TACAN Rwy 26^{2,3}

¹ILS, Category D, 700-2; Category E, 900-3;

LOC, Category E, 900-3.

²Category E, 900-3.

³NA when local weather not available.

MESQUITE, TX

MESQUITE METRO (HQZ).....**ILS or LOC Rwy 18¹**
LOC/DME BC Rwy 36
RNAV (GPS) Rwy 18
RNAV (GPS) Rwy 36

NA when local weather not available.

¹ILS, Category C, 800-2.

NAME ALTERNATE MINIMUMS

MIDLOTHIAN/WAXAHACHIE, TX

MID-WAY
RGNL (JWY).....**RNAV (GPS) Rwy 18**
RNAV (GPS) Rwy 36¹

Category D, 800-2¼.

¹NA when local weather not available.

MINEOLA/QUITMAN, TX

WOOD COUNTY - COLLINS
FLD (JDD).....**RNAV (GPS) Rwy 18**
RNAV (GPS) Rwy 36

NA when local weather not available.

MINERAL WELLS, TX

MINERAL WELLS
RGNL (MWL).....**RNAV (GPS) Rwy 31**
NA when local weather not available.

MOUNT PLEASANT, TX

MOUNT PLEASANT
RGNL (OSA).....**RNAV (GPS) Rwy 17¹**
RNAV (GPS) Rwy 31
RNAV (GPS) Rwy 35¹

NA when local weather not available.

¹Category D, 800-2¼.

PAMPA, TX

PERRY LEFORS
FLD (PPA).....**RNAV (GPS) Rwy 17**
NA when local weather not available.
Category D, 800-2¼.

PARIS, TX

COX FLD (PRX).....**RNAV (GPS) Rwy 17**
RNAV (GPS) Rwy 35
VOR Rwy 35

NA when local weather not available.

Category D, 800-2¼.

PERRYTON, TX

PERRYTON OCHILTREE
COUNTY (PYX).....**RNAV (GPS) Rwy 17**
RNAV (GPS) Rwy 35

NA when local weather not available.

PLAINVIEW, TX

HALE COUNTY (PVW).....**RNAV (GPS) Rwy 4**
RNAV (GPS) Rwy 22

NA when local weather not available.

Categories C, D, 800-2¼.

ROCKWALL, TX

RAPLH M HALL/ROCKWALL
MUNI (F46).....**RNAV (GPS) Rwy 17**
RNAV (GPS) Rwy 35

NA when local weather not available.

22223

NAME ALTERNATE MINIMUMS

SEMINOLE, TX

GAINES
COUNTY (GNC).....RNAV (GPS) Rwy 35
NA when local weather not available.

SHERMAN/DENSION, TX

NORTH TEXAS RGNL/PERRIN
FLD (GY1).....RNAV (GPS) Rwy 17L¹
RNAV (GPS) Rwy 35R¹
VOR-A

Category D, 800-2¼.
¹NA when local weather not available.

SNYDER, TX

WINSTON
FLD (SNK).....RNAV (GPS) Rwy 35
NA when local weather not available.

STEPHENVILLE, TX

STEPHENVILLE CLARK
RGNL (SEP).....RNAV (GPS) Rwy 14
RNAV (GPS) Rwy 32
NA when local weather not available.
Category D, 800-2¼.

SULPHUR SPRINGS, TX

SULPHUR SPRINGS
MUNI (SLR).....RNAV (GPS) Rwy 1
RNAV (GPS) Rwy 19
VOR-B
NA when local weather not available.

SWEETWATER, TX

AVENGER FLD (SWW).....RNAV (GPS) Rwy 4
RNAV (GPS) Rwy 17
RNAV (GPS) Rwy 22
RNAV (GPS) Rwy 35
NA when local weather not available.
Category D, 800-2¼.

TERRELL, TX

TERRELL MUNI (TRL).....RNAV (GPS) Rwy 18
RNAV (GPS) Rwy 36
NA when local weather not available.

TYLER, TX

TYLER POUNDS
RGNL (TYR).....ILS or LOC Rwy 4¹²³
RNAV (GPS) Rwy 4¹⁴
RNAV (GPS) Rwy 13¹⁴
RNAV (GPS) Rwy 18¹⁴
RNAV (GPS) Rwy 22⁴
RNAV (GPS) Rwy 31¹⁴
RNAV (GPS) Rwy 36¹⁴
VOR Rwy 4¹⁴
VOR Rwy 31¹⁴

¹NA when local weather not available.
²NA when control tower closed.
³LOC, Category D, 800-2¼.
⁴Category D, 800-2¼.

NAME ALTERNATE

VERNON, TX

WILBARGER
COUNTY (F05).....RNAV (GPS) Rwy 2
RNAV (GPS) Rwy 20
NA when local weather not available.

WICHITA FALLS, TX

KICKAPOO
DOWNTOWN (CWC).....RNAV (GPS) Rwy 35
NA when local weather not available.

SHEPPARD AFB/
WICHITA FALLS MUNI (KSPS).....RADAR-1
NA when Sheppard approach control closed.

11 AUG 2022 to 08 SEP 2022

11 AUG 2022 to 08 SEP 2022

22223


TAKEOFF MINIMUMS, (OBSTACLE) DEPARTURE PROCEDURES, AND


DIVERSE VECTOR AREA (RADAR VECTORS)

22223

INSTRUMENT APPROACH PROCEDURE CHARTS


IFR TAKEOFF MINIMUMS AND (OBSTACLE) DEPARTURE PROCEDURES
Civil Airports and Selected Military Airports

ALL USERS: Airports that have Departure Procedures (DPs) designed specifically to assist pilots in avoiding obstacles during the climb to the minimum enroute altitude, and/or airports that have civil IFR takeoff minimums other than standard, are listed below. Takeoff Minimums and Departure Procedures apply to all runways unless otherwise specified. An entry may also be listed that contains only Takeoff Obstacle Notes. Altitudes, unless otherwise indicated, are minimum altitudes in MSL.

DPs specifically designed for obstacle avoidance are referred to as Obstacle Departure Procedures (ODPs) and are textually described below, or published separately as a graphic procedure. If the ODP is published as a graphic procedure, its name will be listed below, and it can be found in either this volume (civil), or the applicable military volume, as appropriate. Users will recognize graphic obstacle DPs by the term "(OBSTACLE)" included in the procedure title; e.g., TETON TWO (OBSTACLE). If not specifically assigned an ODP, SID, or RADAR vector as part of an IFR clearance, an ODP may be required to be flown for obstacle clearance, even though not specifically stated in the IFR clearance. When doing so in this manner, ATC should be informed when the ODP being used contains a specified route to be flown, restrictions before turning, and/or altitude restrictions.

Some ODPs, which are established solely for obstacle avoidance, require a climb in visual conditions to cross the airport, a fix, or a NAVAID in a specified direction, at or above a specified altitude. These procedures are called Visual Climb Over Airport (VCOA). To ensure safe and efficient operations, the pilot must verbally request approval from ATC to fly the VCOA when requesting their IFR clearance.

At some locations where an ODP has been established, a diverse vector area (DVA) may be created to allow RADAR vectors to be used in lieu of an ODP. DVA information will state that headings will be as assigned by ATC and climb gradients, when applicable, will be published immediately following the specified departure procedure.

Graphic DPs designed by ATC to standardize traffic flows, ensure aircraft separation and enhance capacity are referred to as "Standard Instrument Departures (SIDs)". SIDs also provide obstacle clearance and are published under the appropriate airport section. ATC clearance must be received prior to flying a SID.

CIVIL USERS NOTE: Title 14 Code of Federal Regulations Part 91 prescribes standard takeoff rules and establishes takeoff minimums for certain operators as follows: (1) For aircraft, other than helicopters, having two engines or less – one statute mile visibility. (2) For aircraft having more than two engines – one-half statute mile visibility. (3) For helicopters – one-half statute mile visibility. These standard minima apply in the absence of any different minima listed below.

MILITARY USERS NOTE: Civil (nonstandard) takeoff minima are published below. For military takeoff minima, refer to appropriate service directives.

ABILENE, TX
ABILENE RGNL (ABI)
TAKEOFF MINIMUMS AND (OBSTACLE) DEPARTURE PROCEDURES
AMDT 4A 17JUN21 (21168) (FAA)
DEPARTURE PROCEDURE:
Rwy 17L, climb on heading 185° to 3100 before proceeding on course.

TAKEOFF OBSTACLE NOTES:
Rwy 17L, lighting 10' from DER, 5' left of centerline, 2' AGL/1777' MSL.

Rwy 17R, terrain, sign, lighting beginning 8' from DER, 150' left of centerline, up to 1789' MSL.

Lighting beginning 10' from DER, 54' right of centerline, up to 1' AGL/1787' MSL.

Pole 946' from DER, 743' left of centerline, 35' AGL/1821' MSL.

Rwy 35L, lighting 9' from DER, 54' right of centerline, 1' AGL/1759' MSL.

Pole, wind indicator beginning 193' from DER, 516' right of centerline, up to 8' AGL/1769' MSL.

Rwy 35R, lighting 9' from DER, 54' right of centerline, 2' AGL/1791' MSL.

Sign 56' from DER, 428' left of centerline, 2' AGL/1794' MSL.

AMARILLO, TX
RICK HUSBAND AMARILLO INTL (AMA)
TAKEOFF MINIMUMS AND (OBSTACLE)
DEPARTURE PROCEDURES
AMDT 1A 21JUN18 (18172) (FAA)
DEPARTURE PROCEDURE:
Rwy 22, climb heading 218° to 4100 before turning northbound.

Rwy 31, climbing right turn heading 360° to 5400 before turning westbound.

TAKEOFF OBSTACLE NOTES:
Rwy 4, sign 12' from DER, 302' right of centerline, 3' AGL/3605' MSL.

VORTAC 1306' from DER, 849' left of centerline, 42' AGL/3637' MSL.

Rwy 31, sign 22' from DER, 257' right of centerline, 7' AGL/3605' MSL.

Sign 103' from DER, 379' left of centerline, 3' AGL/3606' MSL.


TAKEOFF MINIMUMS, (OBSTACLE) DEPARTURE PROCEDURES, AND


DIVERSE VECTOR AREA (RADAR VECTORS)

22223

TAKEOFF MINIMUMS, (OBSTACLE) DEPARTURE PROCEDURES, AND DIVERSE VECTOR AREA (RADAR VECTORS)

22223

AMARILLO, TX (CON'T)

TRADEWIND (TDW)

TAKEOFF MINIMUMS AND (OBSTACLE) DEPARTURE PROCEDURES

AMDT 3 17NOV11 (11321) (FAA)

TAKEOFF MINIMUMS:

Rwys 5, 23, NA - Environmental.

Rwy 35, 300-1¼ or std. w/min. climb of 248' per NM to 4000.

DEPARTURE PROCEDURE:

Rwy 35, climb heading 004° to 5500 before turning left.

TAKEOFF OBSTACLE NOTES:

Rwy 17, fence beginning 14' from DER, left and right of centerline, up to 6' AGL/3645' MSL.

Vehicle on road 57' from DER, left and right of centerline, up to 17' AGL/3656' MSL.

Poles beginning 297' from DER, 331' right of centerline, up to 34' AGL/3673' MSL.

Trees beginning 121' from DER, 181' right of centerline, up to 55' AGL/3675' MSL.

Trees beginning 175' from DER, 306' left of centerline, up to 55' AGL/3688' MSL.

Rwy 35, fences and signs beginning 18' from DER, left and right of centerline, up to 10' AGL/3659' MSL.

Vehicle on road beginning 60' from DER, left and right of centerline, up to 17' AGL/3666' MSL.

Power lines beginning 124' from DER, left and right of centerline, up to 50' AGL/3679' MSL.

Trees beginning 168' from DER, 142' left of centerline, up to 55' AGL/3698' MSL.

Trees beginning 60' from DER, 166' right of centerline, up to 55' AGL/3698' MSL.

Tower 1.2 NM from DER, 4181' right of centerline, 300' AGL/3912' MSL.

Tower 1.3 NM from DER, 2290' left of centerline, 250' AGL/3910' MSL.

ANDREWS, TX

ANDREWS COUNTY (E11)

TAKEOFF MINIMUMS AND (OBSTACLE) DEPARTURE PROCEDURES

AMDT 1 27AUG09 (09239) (FAA)

TAKEOFF MINIMUMS:

Rwy 20, 400-2¼ or std. w/ min. climb of 229' per NM to 3700.

DEPARTURE PROCEDURE:

Rwy 11, climb heading 114° to 3600 before turning left.

Rwy 29, climb heading 294° to 3600 before turning left.

TAKEOFF OBSTACLE NOTES:

Rwy 34, antenna 1189' from DER, 588' left of centerline, 52' AGL/3236' MSL.

Poles beginning 181' from DER, 470' left of centerline, up to 36' AGL/3210' MSL.

Bush 471' from DER, 92' left of centerline, 7' AGL/3186' MSL.

Tree 1207' from DER, 587' left of centerline, 44' AGL/3228' MSL.

Bushes beginning 282' from DER, 305' right of centerline, up to 10' AGL/3189' MSL.

Tree 4780' from DER, 895' right of centerline, 100' AGL/3304' MSL.

ARLINGTON, TX

ARLINGTON MUNI (GKY)

TAKEOFF MINIMUMS AND (OBSTACLE) DEPARTURE PROCEDURES

AMDT 3 18SEP14 (14261) (FAA)

DEPARTURE PROCEDURE:

Rwy 16, climb heading 162° to 2500 before turning left.

Rwy 34, climb heading 342° to 1400 before turning southeast bound.

TAKEOFF OBSTACLE NOTES:

Rwy 16, REILs beginning 80' from DER, 126' left of centerline, up to 15' AGL/601' MSL.

REILs beginning 77' from DER, 126' right of centerline, up to 19' AGL/603' MSL.

Trees 593' from DER, 479' right of centerline, up to 26' AGL/614' MSL.

Transmission tower 3596' from DER, 1433' left of centerline, 112' AGL/702' MSL.

Rwy 34, trees beginning 228' from DER, 403' left of centerline, up to 35' AGL/654' MSL.

Trees beginning 1090' from DER, 439' right of centerline, up to 61' AGL/670' MSL.

Trees 1525' from DER, 339' left of centerline, up to 72' AGL/681' MSL.

ATHENS, TX

ATHENS MUNI (F44)

TAKEOFF MINIMUMS AND (OBSTACLE) DEPARTURE PROCEDURES

ORIG-A 10OCT19 (19283) (FAA)

TAKEOFF OBSTACLE NOTES:

Rwy 18, trees beginning 86' from DER, 462' left of centerline, up to 49' AGL/482' MSL.

Terrain 209' from DER, 412' right of centerline, 443' MSL.

Trees, fences beginning 209' from DER, 299' right of centerline, up to 19' AGL/460' MSL.

Trees, fences beginning 237' from DER, 318' right of centerline, up to 21' AGL/463' MSL.

Trees, fences, buildings beginning 271' from DER, 299' right of centerline, up to 22' AGL/464' MSL.

Trees beginning 338' from DER, 243' left of centerline, up to 53' AGL/483' MSL.

Pole, trees beginning 398' from DER, 126' right of centerline, up to 32' AGL/471' MSL.

Tree 702' from DER, 528' right of centerline, 58' AGL/485' MSL.

Trees, poles, catenary beginning 738' from DER, 174' right of centerline, up to 64' AGL/493' MSL.

Tree 1037' from DER, 465' left of centerline, 79' AGL/501' MSL.

Tree 1083' from DER, 487' right of centerline, 54' AGL/497' MSL.

CON'T

TAKEOFF MINIMUMS, (OBSTACLE) DEPARTURE PROCEDURES, AND DIVERSE VECTOR AREA (RADAR VECTORS)

22223


TAKEOFF MINIMUMS, (OBSTACLE) DEPARTURE PROCEDURES, AND


DIVERSE VECTOR AREA (RADAR VECTORS)

22223

ATHENS, TX (CON'T)**ATHENS MUNI (F44) (CON'T)****Rwy 18 (CON'T)**, trees, poles, building beginning 1100' from DER, 6' right of centerline, up to 62' AGL/504' MSL.

Trees beginning 1219' from DER, 435' left of centerline, up to 83' AGL/504' MSL.

Tree 1330' from DER, 387' left of centerline, 86' AGL/507' MSL.

Trees beginning 1379' from DER, 302' right of centerline, up to 57' AGL/510' MSL.

Trees, catenary beginning 1420' from DER, 4' left of centerline, up to 94' AGL/512' MSL.

Trees, poles, catenary beginning 1480' from DER, 153' right of centerline, up to 62' AGL/518' MSL.

Trees, catenary, poles beginning 2111' from DER, 102' right of centerline, up to 63' AGL/525' MSL.

Trees beginning 2199' from DER, 1' left of centerline, up to 70' AGL/523' MSL.

Trees, catenary, pole beginning 2280' from DER, 132' right of centerline, up to 68' AGL/536' MSL.

Trees, poles beginning 2404' from DER, 104' right of centerline, up to 76' AGL/536' MSL.

Trees, poles, catenary beginning 2464' from DER, 30' right of centerline, up to 75' AGL/546' MSL.

Trees beginning 2719' from DER, 10' left of centerline, up to 71' AGL/538' MSL.

Trees, poles, catenaries beginning 2786' from DER, 42' right of centerline, up to 84' AGL/561' MSL.

Rwy 36, trees, building, vehicles on road, pole beginning 112' from DER, 250' right of centerline, up to 62' AGL/498' MSL.

Vehicles on road beginning 574' from DER, 543' left of centerline, up to 16' AGL/456' MSL.

Tree 655' from DER, 557' right of centerline, 74' AGL/499' MSL.

Tree 683' from DER, 534' left of centerline, 27' AGL/466' MSL.

Pole 692' from DER, 415' left of centerline, 32' AGL/470' MSL.

Trees beginning 783' from DER, 249' right of centerline, up to 76' AGL/501' MSL.

Trees beginning 872' from DER, 34' right of centerline, up to 81' AGL/505' MSL.

Catenary, pole, trees beginning 889' from DER, 223' left of centerline, up to 34' AGL/475' MSL.

Trees beginning 1149' from DER, 354' left of centerline, up to 71' AGL/505' MSL.

Trees beginning 1206' from DER, 336' left of centerline, up to 74' AGL/509' MSL.

Trees beginning 1484' from DER, 177' left of centerline, up to 71' AGL/510' MSL.

Trees beginning 1513' from DER, 149' right of centerline, up to 76' AGL/511' MSL.

Trees beginning 2151' from DER, 26' left of centerline, up to 75' AGL/519' MSL.

ATLANTA, TX**HALL-MILLER MUNI (ATA)****TAKEOFF MINIMUMS AND (OBSTACLE) DEPARTURE PROCEDURES****AMDT 3 11AUG22 (22223) (FAA)****TAKEOFF MINIMUMS:****Rwys 15, 33**, NA-Environmental.**Rwy 23**, 300-1% or std. w/min. climb of 300' per NM to 500.**DEPARTURE PROCEDURE:****Rwy 5**, climb on heading 048° to 800 before turning left.**TAKEOFF OBSTACLE NOTES:****Rwy 5**, sign, lighting beginning 2' from DER, 104' left of centerline, up to 270' MSL.

Lighting, vehicles on road beginning 8' from DER, 105' right of centerline, up to 272' MSL.

Vegetation 81' from DER, 499' left of centerline, 272' MSL.

Pole 82' from DER, 376' right of centerline, 294' MSL.

Tree, pole beginning 99' from DER, 198' right of centerline, up to 302' MSL.

Tree, fence beginning 101' from DER, 306' left of centerline, up to 44' AGL/311' MSL.

Trees, pole beginning 219' from DER, 178' right of centerline, up to 309' MSL.

Trees beginning 298' from DER, 345' left of centerline, up to 319' MSL.

Trees, poles beginning 530' from DER, 47' left of centerline, up to 322' MSL.

Trees beginning 2019' from DER, 737' right of centerline, up to 324' MSL.

Trees beginning 2453' from DER, 257' right of centerline, up to 359' MSL.

Tower 4143' from DER, 678' left of centerline, 125' AGL/398' MSL.

Rwy 23, lighting 9' from DER, 105' left of centerline, 281' MSL.

Vegetation beginning 12' from DER, 141' right of centerline, up to 299' MSL.

Trees beginning 17' from DER, 247' left of centerline, 336' MSL.

Trees beginning 40' from DER, 322' left of centerline, up to 90' AGL/359' MSL.

Tree, terrain beginning 176' from DER, 363' right of centerline, up to 315' MSL.

Tree 201' from DER, 349' right of centerline, 353' MSL.

Trees beginning 273' from DER, 356' right of centerline, up to 365' MSL.

Trees beginning 292' from DER, 232' left of centerline, up to 371' MSL.

Tree, terrain, vegetation beginning 365' from DER, 184' right of centerline, up to 369' MSL.

Trees, terrain beginning 453' from DER, 51' left of centerline, up to 105' AGL/395' MSL.

Trees, terrain, vegetation, fence beginning 501' from DER, 94' right of centerline, up to 378' MSL.

Tree, terrain, fence beginning 694' from DER, 19' right of centerline, up to 395' MSL.

Trees, terrain, vehicles on road beginning 820' from DER, 8' right of centerline, up to 87' AGL/404' MSL.

Trees beginning 1173' from DER, 117' left of centerline, up to 402' MSL.

Trees, vegetation, buildings beginning 1326' from DER, 21' right of centerline, up to 86' AGL/422' MSL.

Trees beginning 1473' from DER, 548' left of centerline, up to 405' MSL.

Trees beginning 1560' from DER, 535' left of centerline, up to 412' MSL.

Trees beginning 1684' from DER, 15' left of centerline, up to 414' MSL.

Tree 1765' from DER, 825' left of centerline, 419' MSL.

Tree 1791' from DER, 667' left of centerline, 421' MSL.

Trees beginning 1805' from DER, 29' left of centerline, up to 102' AGL/428' MSL.

Trees beginning 4485' from DER, 762' left of centerline, up to 429' MSL.

CON'T

TAKEOFF MINIMUMS, (OBSTACLE) DEPARTURE PROCEDURES, AND


DIVERSE VECTOR AREA (RADAR VECTORS)

22223

TAKEOFF MINIMUMS, (OBSTACLE) DEPARTURE PROCEDURES, AND DIVERSE VECTOR AREA (RADAR VECTORS)

22223

ATLANTA, TX (CON'T)

HALL-MILLER MUNI (ATA) (CON'T)

- Rwy 23 (CON'T)**, trees beginning 4554' from DER, 505' left of centerline, up to 441' MSL.
Trees beginning 4812' from DER, 1667' right of centerline, up to 423' MSL.
Trees, transmission line beginning 5135' from DER, 571' left of centerline, up to 453' MSL.
Tree 1 NM from DER, 1595' left of centerline, 114' AGL/463' MSL.
Trees beginning 1 NM from DER, 1063' right of centerline, up to 447' MSL.
Trees beginning 1 NM from DER, 1299' right of centerline, 451' MSL.
Trees beginning 1.1 NM from DER, 1264' right of centerline, 80' AGL/456' MSL.

BIG SPRING, TX

BIG SPRING MC MAHON-WRINKLE (BPG)

TAKEOFF MINIMUMS AND (OBSTACLE) DEPARTURE PROCEDURES

AMDT 3 08MAR12 (12068) (FAA)

TAKEOFF MINIMUMS:

Rwy 6, 400-1½ w/min. climb of 254' per NM to 3400, or std. w/min. climb of 399' per NM to 3100.

DEPARTURE PROCEDURE:

Rwy 6, climb heading 060° to 3300 before turning right.

Rwy 17, climb heading 175° to 3100 before turning left.

TAKEOFF OBSTACLE NOTES:

- Rwy 6**, trees beginning 160' from DER, 177' right of centerline, up to 25' AGL/2628' MSL.
Trees beginning 424' from DER, 221' left of centerline, up to 38' AGL/2739' MSL.
Poles beginning 1569' from DER, 19' left of centerline, up to 36' AGL/2722' MSL.
Poles beginning 1529' from DER, 178' right of centerline, up to 34' AGL/2628' MSL.
Tank 1.2 NM from DER, 2179' left of centerline, 135' AGL/2859' MSL.

BONHAM, TX

JONES FLD (F00)

TAKEOFF MINIMUMS AND (OBSTACLE) DEPARTURE PROCEDURES

AMDT 2 25AUG11 (22139) (FAA)

DEPARTURE PROCEDURE:

Rwy 17, climb heading 176° to 1100 before turning right.

TAKEOFF OBSTACLE NOTES:

- Rwy 17**, trees 106' from DER, 293' right of centerline, 20' AGL/630' MSL.
Trees 560' from DER, left and right of centerline, 30' AGL/630' MSL.
T-L tower 868' from DER, 575' right of centerline, 38' AGL/655' MSL.
Multiple power poles 1374' from DER, left and right of centerline, 45' AGL/655' MSL.
Rwy 35, trees 1540' from DER, 858' left of centerline, 80' AGL/659' MSL.
Trees 1660' from DER, 812' right of centerline, 80' AGL/699' MSL.

BORGER, TX

HUTCHINSON COUNTY (BGD)

TAKEOFF MINIMUMS AND (OBSTACLE) DEPARTURE PROCEDURES

AMDT 2A 25FEB21 (21056) (FAA)

TAKEOFF MINIMUMS:

Rwy 17, 300- 1½ or std. w/ min. climb of 311' per NM to 3400.

Rwy 21, 300- 1¾ or std. w/ min. climb of 210' per NM to 3400.

TAKEOFF OBSTACLE NOTES:

- Rwy 17**, pole 3' from DER, 487' right of centerline, 3083' MSL.
Vegetation 49' from DER, 283' left of centerline, 3057' MSL.
Building, vehicles on roads, sign beginning 123' from DER, 274' right of centerline, up to 31' AGL/3087' MSL.
Poles, building, trees beginning 544' from DER, 140' right of centerline, up to 38' AGL/3097' MSL.
Trees, pole, sign beginning 967' from DER, 234' right of centerline, up to 3098' MSL.
Tree 1136' from DER, 89' left of centerline, 3084' MSL.
Trees, pole beginning 1167' from DER, 140' right of centerline, up to 3102' MSL.
Pole 1262' from DER, 703' left of centerline, 3090' MSL.
Pole, trees beginning 1310' from DER, 319' left of centerline, up to 3093' MSL.
Trees, poles beginning 1314' from DER, 222' right of centerline, up to 3107' MSL.
Pole 1425' from DER, 464' left of centerline, 3095' MSL.
Poles, tree beginning 1427' from DER, 15' left of centerline, up to 42' AGL/3105' MSL.
Tree 2146' from DER, 805' right of centerline, 3109' MSL.
Tree 2355' from DER, 57' left of centerline, 3117' MSL.
Tower 5300' from DER, 1011' left of centerline, 142' AGL/3246' MSL.
Tower 5322' from DER, 1476' left of centerline, 167' AGL/3262' MSL.
Tower 1.2 NM from DER, 1188' left of centerline, 150' AGL/3264' MSL.
Rwy 21, wind indicator 54' from DER, 496' left of centerline, 3046' MSL.
Fence, vegetation, pole beginning 81' from DER, 101' right of centerline, up to 3052' MSL.
Tree, vegetation, terrain beginning 116' from DER, 54' left of centerline, up to 3061' MSL.
Stack 1.4 NM from DER, 2487' left of centerline, 221' AGL/3255' MSL.
Rwy 35, vegetation 18' from DER, 402' right of centerline, 7' AGL/3003' MSL.
Tree 81' from DER, 171' left of centerline, 10' AGL/3001' MSL.
Ag equip 238' from DER, 406' right of centerline, 24' AGL/3011' MSL.

TAKEOFF MINIMUMS, (OBSTACLE) DEPARTURE PROCEDURES, AND DIVERSE VECTOR AREA (RADAR VECTORS)

22223


**TAKEOFF MINIMUMS, (OBSTACLE) DEPARTURE PROCEDURES, AND
DIVERSE VECTOR AREA (RADAR VECTORS)**


22223

BOWIE, TX**BOWIE MUNI (0F2)****TAKEOFF MINIMUMS AND (OBSTACLE) DEPARTURE PROCEDURES**

ORIG 12MAR09 (09071) (FAA)

TAKEOFF OBSTACLE NOTES:

- Rwy 17**, tree 131' from DER, 311' right of centerline, 100' AGL/1169' MSL.
Trees beginning 122' from DER, 313' left of centerline, up to 100' AGL/1199' MSL.
Rwy 35, tree 418' from DER, 299' left of centerline, 100' AGL/1206' MSL.
Vehicle on road 726' from DER, 471' left of centerline, 15' AGL/1131' MSL.

BRECKENRIDGE, TX**STEPHENS COUNTY (BKD)****TAKEOFF MINIMUMS AND (OBSTACLE) DEPARTURE PROCEDURES**

ORIG 26JUL12 (12208) (FAA)

TAKEOFF MINIMUMS:**Rwys 4, 22, 13, 31** NA - ATC.**TAKEOFF OBSTACLE NOTES:**

- Rwy 17**, Trees beginning 1424' from DER, 214' left and right of centerline, up to 55' AGL/1344' MSL.
Rwy 35, Trees beginning 538' from DER, left and right of centerline, up to 55' AGL/1324' MSL.
Vehicles on road 631' from DER, 205ft right of centerline, up to 15' AGL/1284' MSL.

BRIDGEPORT, TX**BRIDGEPORT MUNI (XBP)****TAKEOFF MINIMUMS AND (OBSTACLE) DEPARTURE PROCEDURES**

AMDT 2 17DEC09 (09351) (FAA)

TAKEOFF MINIMUMS:

- Rwy 18**, 400-2 or std. w/ min. climb of 458' per NM to 1300.
Rwy 36, 300-1¼ or std. w/ min. climb of 427' per NM to 1200.

TAKEOFF OBSTACLE NOTES:

- Rwy 18**, trees beginning 2383' from DER, 504' right of centerline, up to 100' AGL/1169' MSL.
Trees beginning 2438' from DER, 525' left of centerline, up to 100' AGL/1109' MSL.
Tower 1.2 NM from DER, 664' left of centerline, 55' AGL/1046' MSL.
Tower 1.2 NM from DER, 1121' left of centerline, 55' AGL/1042' MSL.
Rwy 36, trees beginning 111' from DER, 21' right of centerline, up to 100' AGL/851' MSL.
Trees beginning 607' from DER, 430' left of centerline, up to 100' AGL/1039' MSL.
Hangar 12' from DER, 424' right of centerline, 17' AGL/827' MSL.
Multiple poles and towers beginning 1064' from DER, 297' left of centerline, 43' AGL/969' MSL.

BROWNFIELD, TX**TERRY COUNTY (BFE)****TAKEOFF MINIMUMS AND (OBSTACLE) DEPARTURE PROCEDURES**

ORIG 22OCT09 (09295) (FAA)

TAKEOFF OBSTACLE NOTES:

- Rwy 2**, aircraft on taxiway beginning at DER, 188' left of centerline, up to 17' AGL/3281' MSL.
Vehicle on roadway, 121' from DER, 519' right of centerline, 15' AGL/3269' MSL.
Hangar 591' from DER, 333' left of centerline, 30' AGL/3289' MSL.
Tree 950' from DER, 179' right of centerline, 34' AGL/3299' MSL.
Rwy 13, vehicles on roadway beginning 71' from DER, 61' left of centerline, up to 15' AGL/3269' MSL.
Rwy 20, tree 2937' from DER, 1108' right of centerline, 75' AGL/3329' MSL.
Rwy 31, vehicles on roadway beginning at DER, 198' left of centerline, up to 15' AGL/3284' MSL.
Aircraft on taxiway beginning at DER, 253' right of centerline, up to 17' AGL/3281' MSL.
Vehicles on roadway beginning 299' from DER, 14' right of centerline up to 15' AGL/3284' MSL.
Hangar 572' from DER, 597' right of centerline, 30' AGL/3299' MSL.
Tree 1832' from DER, 233' right of centerline, 75' AGL/3344' MSL.

11 AUG 2022 to 08 SEP 2022

11 AUG 2022 to 08 SEP 2022

22223

SC-2

TAKEOFF MINIMUMS, (OBSTACLE) DEPARTURE PROCEDURES, AND DIVERSE VECTOR AREA (RADAR VECTORS)

22223

CANADIAN, TX

HEMPHILL COUNTY (HHF)

TAKEOFF MINIMUMS AND (OBSTACLE) DEPARTURE PROCEDURES

AMDT 3B 11AUG22 (22223) (FAA)

TAKEOFF MINIMUMS:

Rwy 4, 300-1¼ or std. w/min. climb of 285' per NM to 2700.

Rwy 18, std. w/min. climb of 295' per NM to 3600 or 1300-3 for VCOA.

DEPARTURE PROCEDURE:

Rwy 22, climb on heading 218° to 3100 before turning left.

VCOA:

Rwy 18, obtain ATC approval for VCOA when requesting IFR clearance. Climb in visual conditions to cross Hemphill County airport at or above 3500 before proceeding on course.

TAKEOFF OBSTACLE NOTES:

Rwy 4, trees, vehicles on road, lighting, terrain, building, pole beginning 8' from DER, 99' right of centerline, up to 49' AGL/2429' MSL.

Lighting 35' from DER, 100' left of centerline, 2379' MSL.

Trees beginning 1032' from DER, 576' left of centerline, up to 2419' MSL.

Trees beginning 1215' from DER, 290' left of centerline, up to 2421' MSL.

Trees beginning 1338' from DER, 216' left of centerline, up to 2422' MSL.

Trees beginning 1438' from DER, 51' left of centerline, up to 2424' MSL.

Tower, tree beginning 1687' from DER, 504' left of centerline, up to 70' AGL/2434' MSL.

Pole 3027' from DER, 1205' right of centerline, 2454' MSL.

Trees beginning 3160' from DER, 830' right of centerline, up to 2459' MSL.

Pole 3360' from DER, 1153' right of centerline, 2466' MSL.

Tree 3451' from DER, 768' right of centerline, 2475' MSL.

Tower, trees, poles beginning 3513' from DER, 838' right of centerline, up to 80' AGL/2513' MSL.

Tower 1 NM from DER, 1' right of centerline, 123' AGL/2549' MSL.

Rwy 18, pole, tree beginning 122' from DER, 384' right of centerline, up to 36' AGL/2427' MSL.

Tree 790' from DER, 246' left of centerline, 2454' MSL.

Tree, terrain beginning 3017' from DER, 1106' right of centerline, up to 2523' MSL.

Tower 1.3 NM from DER, 202' left of centerline, 60' AGL/2614' MSL.

Rwy 22, terrain, lighting beginning 8' from DER, 111' left of centerline, up to 2394' MSL.

Fence 35' from DER, 299' right of centerline, 2396' MSL.

Fence, terrain beginning 48' from DER, 299' left of centerline, up to 8' AGL/2402' MSL.

Vehicles on road 277' from DER, 488' left of centerline, 2406' MSL.

Trees, vehicles on road beginning 400' from DER, 489' left of centerline, up to 49' AGL/2437' MSL.

Rwy 36, vehicles on road, beginning 67' from DER, 147' left of centerline, up to 2376' MSL.

Trees beginning 1172' from DER, 651' right of centerline, up to 2415' MSL.

Trees beginning 1610' from DER, 716' right of centerline, up to 2421' MSL.

Trees beginning 1632' from DER, 698' right of centerline, up to 2426' MSL.

Tower 3723' from DER, 830' left of centerline, 175' AGL/2517' MSL.

CHILDRESS, TX

CHILDRESS MUNI (CDS)

TAKEOFF MINIMUMS AND (OBSTACLE) DEPARTURE PROCEDURES

AMDT1 10MAR11 (11069) (FAA)

TAKEOFF OBSTACLE NOTES:

Rwy 4, trees beginning from 997' from DER, 4' right of centerline, up to 100' AGL/2049' MSL.

Tree 1151' from DER, 93' left of centerline, 100' AGL/2049' MSL.

Rwy 18, post 64' from DER, 49' right of centerline, 5' AGL/1958' MSL.

Trees beginning from 1286' from DER, 630' right of centerline, up to 100' AGL/2008' MSL.

Rwy 22, tree 4873' from DER, 231' left of centerline, 100' AGL/2069' MSL.

Tree 5638' from DER, 1746' right of centerline, 100' AGL/2089' MSL.

Rwy 36, tree 196' from DER, 442' right of centerline, 100' AGL/2049' MSL.

Tree 578' from DER, 387' left of centerline, 100' AGL/2049' MSL.

CISCO, TX

GREGORY M SIMMONS MEML (GZN)

TAKEOFF MINIMUMS AND (OBSTACLE) DEPARTURE PROCEDURES

AMDT 1 15AUG19 (22139) (FAA)

TAKEOFF OBSTACLE NOTES:

Rwy 18, pipeline 31' from DER, 432' right of centerline, 1725' MSL.

Trees beginning 89' from DER, 132' right of centerline, up to 1727' MSL/10' AGL.

Tree 140' from DER, 475' left of centerline, 1739' MSL/42' AGL.

Trees beginning 169' from DER, 388' right of centerline, up to 1737' MSL.

Trees and pole beginning 558' from DER, 80' right of centerline, up to 1742' MSL/36' AGL.

Trees beginning 1020' from DER, 267' left of centerline, up to 1743' MSL/40' AGL.

Rwy 36, wall 48' from DER, 39' left of centerline, 1716' MSL/12' AGL.

Traverse way 99' from DER, left to right of centerline, 1713' MSL.

Traverse way 177' from DER, 26' left of centerline, 1716' MSL.

Traverse way 333' from DER, 71' right of centerline, 1716' MSL.

Trees and poles beginning 381' from DER, 57' right of centerline, up to 1730' MSL/32' AGL.

Trees beginning 642' from DER, 25' right of centerline, up to 1734' MSL/36' AGL.

TAKEOFF MINIMUMS, (OBSTACLE) DEPARTURE PROCEDURES, AND DIVERSE VECTOR AREA (RADAR VECTORS)

22223

SC-2

11 AUG 2022 to 08 SEP 2022

11 AUG 2022 to 08 SEP 2022


TAKEOFF MINIMUMS, (OBSTACLE) DEPARTURE PROCEDURES, AND


DIVERSE VECTOR AREA (RADAR VECTORS)

22223

CLEBURNE, TX**CLEBURNE RGNL (CPT)****TAKEOFF MINIMUMS AND (OBSTACLE) DEPARTURE PROCEDURES**

ORIG-A 27JUN13 (13178) (FAA)

TAKEOFF MINIMUMS:**Rwy 33**, 300-1½ or std. w/ min. climb of 422' per NM to 1200.**TAKEOFF OBSTACLE NOTES:****Rwy 15**, multiple poles, beginning 952' from DER, 425' right of centerline, up to 30' AGL/883' MSL.

Tree 441' from DER, 501' right of centerline, 55' AGL/868' MSL.

Pole 1137' from DER, 742' left of centerline 35' AGL/875' MSL.

Rwy 33, multiple trees, beginning 602' from DER, 300' left of centerline, up to 55' AGL/873' MSL.

Well drilling rig, 3268' from DER, 123' left of centerline, 174' AGL/1043' MSL.

Well drilling rig 1.2 NM from DER, 615' left of centerline, 104' AGL/976' MSL.

Transmission pole, 1817' from DER, 183' left of centerline, 80' AGL/900' MSL.

COMMERCE, TX**COMMERCE MUNI (2F7)****TAKEOFF MINIMUMS AND (OBSTACLE) DEPARTURE PROCEDURES**

AMDT 2 18NOV10 (10322) (FAA)

TAKEOFF MINIMUMS:**Rwy 18**, 300-2 or std. w/ min. climb of 213' per NM to 900.**DEPARTURE PROCEDURE:****Rwy 18**, climb heading 179° to 1100 before turning right.**TAKEOFF OBSTACLE NOTES:****Rwy 18**, vehicle on road 7' from DER, 345' left of centerline, 15' AGL/524' MSL.

Trees 725' from DER, 481' right of centerline, up to 100' AGL/609' MSL.

Power line beginning 1.4 NM from DER, 1425' left of centerline, up to 200' AGL/759' MSL.

Rwy 36, vehicle on road 9' from DER, 307' right of centerline, 15' AGL/534' MSL.

Terrain 15' from DER, 424' left of centerline, 519' MSL.

Trees beginning 688' from DER, 127' right of centerline, up to 100' AGL/619' MSL.

Vehicle on road 708' from DER, on centerline, 15' AGL/534' MSL.

Trees beginning 4694' from DER, 107' right of centerline, up to 100' AGL/639' MSL.

CORSICANA, TX**C DAVID CAMPBELL FLD-CORSICANA MUNI (CRS)****TAKEOFF MINIMUMS AND (OBSTACLE) DEPARTURE PROCEDURES**

ORIG 22SEP11 (22139) (FAA)

TAKEOFF MINIMUMS:**Rwys 2, 20**, NA-Turf.**TAKEOFF OBSTACLE NOTES:****Rwy 14**, trees beginning 188' from DER, 43' left and right of centerline, up to 48' AGL/480' MSL.

Terrain beginning 64' from DER, 16' left and right of centerline, 440' MSL.

Vehicle on road 201' from DER, 349' right of centerline, 15' AGL/446' MSL.

Power lines beginning 1071' from DER, 749' left of centerline, 40' AGL/479' MSL.

Rwy 32, trees beginning 208' from DER, 317' left and right of centerline, up to 51' AGL/500' MSL.

Poles beginning 583' from DER, 384' right of centerline, up to 35' AGL/484' MSL.

Bush, 70' from DER, 493' left of centerline, 11' AGL/460' MSL.

Vehicle on road beginning 482' from DER, on runway centerline, 15' AGL/468' MSL.

CROSBYTON, TX**CROSBYTON MUNI (8F3)****TAKEOFF MINIMUMS AND (OBSTACLE) DEPARTURE PROCEDURES**

ORIG-A 26APR18 (18116) (FAA)

TAKEOFF OBSTACLE NOTES:**Rwy 17**, lighting 8' from DER, 33' left of centerline, 3014' MSL.

Vegetation 81' from DER, 332' right of centerline, 3' AGL/3015' MSL.

Rwy 35, poles and transmission lines, beginning 819' from DER, 273' left and right of centerline, up to 35' AGL/3053' MSL.

Pole 862' from DER, 537' right of centerline, 3047' MSL.


TAKEOFF MINIMUMS, (OBSTACLE) DEPARTURE PROCEDURES, AND


DIVERSE VECTOR AREA (RADAR VECTORS)

22223

TAKEOFF MINIMUMS, (OBSTACLE) DEPARTURE PROCEDURES, AND DIVERSE VECTOR AREA (RADAR VECTORS)

22223

DALHART, TX

DALHART MUNI (DHT)

TAKEOFF MINIMUMS AND (OBSTACLE) DEPARTURE PROCEDURES

ORIG-A 28FEB19 (19059) (FAA)

TAKEOFF MINIMUMS:

Rwy 3, 600-2¼ or std. w/min. climb of 275' per NM to 4500.

TAKEOFF OBSTACLE NOTES:

Rwy 3, tree 122' from DER, 465' left of centerline, 4001' MSL.

Tower 1.8 NM from DER, 1307' right of centerline, 343' AGL/4305' MSL.

Rwy 17, lighting 0' from DER, 46' left of centerline, 1' AGL/3987' MSL.

Lighting 0' from DER, 47' right of centerline, 1' AGL/3987' MSL.

Rwy 21, tree 746' from DER, 122' left of centerline, 4006' MSL.

Rwy 35, wind indicator, tree beginning 91' from DER, 238' left of centerline, up to 13' AGL/4001' MSL.

Tree 251' from DER, 425' right of centerline, 4002' MSL.

Tree 517' from DER, 631' right of centerline, 4018' MSL.

DALLAS, TX

ADDISON (ADS)

TAKEOFF MINIMUMS AND (OBSTACLE) DEPARTURE PROCEDURES

AMDT 6A 24MAR22 (22083) (FAA)

TAKEOFF MINIMUMS:

Rwy 16, 400-2¼ or std. w/min. climb of 325' per NM to 1100.

TAKEOFF OBSTACLE NOTES:

Rwy 16, vehicles on road and in parking lots, railroads, and poles beginning 168' from DER, 118' right of centerline, up to 36' AGL/665' MSL.

NAVAID, sign, vehicles in parking lots, railroads, poles, trees, and buildings beginning 316' from DER, 1' left of centerline, up to 50' AGL/683' MSL.

Pole and trees beginning 1705' from DER, 46' right of centerline up to 59' AGL/690' MSL.

Buildings beginning 3191' from DER, left and right of centerline, up to 149' AGL/787' MSL.

Building 1.1 NM from DER, 279' left of centerline, 229' AGL/850' MSL.

Building 1.9 NM from DER, 970' right of centerline, 345' AGL/975' MSL.

Building 2.1 NM from DER, 58' right of centerline, 362' AGL/973' MSL.

Rwy 34, service road and buildings beginning 45' from DER, 458' right of centerline, up to 10' AGL/653' MSL.

Sign, vehicles in parking lots, poles, buildings, and trees beginning 641' from DER, 335' left of centerline, up to 34' AGL/693' MSL.

Sign, vehicles on road and in parking lots, poles, buildings, and trees beginning 651' from DER, 455' right of centerline, up to 37' AGL/696' MSL.

Buildings, poles, and trees beginning 1597' from DER, 3' right of centerline, up to 54' AGL/723' MSL.

Buildings, poles, and trees beginning 1667' from DER, 4' left of centerline, up to 47' AGL/716' MSL.

DALLAS EXEC (RBD)

TAKEOFF MINIMUMS AND (OBSTACLE) DEPARTURE PROCEDURES

AMDT 8 08NOV18 (21112) (FAA)

TAKEOFF MINIMUMS:

Rwy 17, 400-2¼ or std. w/min. climb of 220' per NM to 1200.

DEPARTURE PROCEDURE:

Rwy 13, climb heading 129° to 1800 before turning westbound.

Rwy 17, climb heading 174° to 2600 before turning westbound.

Rwy 31, climb heading 309° to 1500 before turning southbound.

Rwy 35, climb heading 354° to 1400 before turning southbound.

TAKEOFF OBSTACLE NOTES:

Rwy 13, lighting 19' from DER, 116' left of centerline, 7' AGL/653' MSL.

Lighting 20' from DER, 115' right of centerline, 6' AGL/651' MSL.

Fence 108' from DER, 347' left of centerline, 10' AGL/658' MSL.

Rwy 17, lighting 39' from DER, 116' right of centerline, 663' MSL.

Lighting 40' from DER, 160' left of centerline, 5' AGL/664' MSL.

Tree 62' from DER, 436' left of centerline, 688' MSL.

Trees beginning 119' from DER, 301' right of centerline, up to 684' MSL.

Trees beginning 122' from DER, 404' left of centerline, up to 41' AGL/692' MSL.

Trees beginning 365' from DER, 340' left of centerline, up to 702' MSL.

Tower 2.2 NM from DER, 598' left of centerline, 310' AGL/1024' MSL.

Antenna 2.2 NM from DER, 583' left of centerline, 312' AGL/1026' MSL.

Rwy 31, tree 46' from DER, 256' left of centerline, 681' MSL.

Trees beginning 81' from DER, 267' left of centerline, up to 683' MSL.

Tree 159' from DER, 296' right of centerline, 672' MSL.

Trees beginning 186' from DER, 304' left of centerline, up to 33' AGL/699' MSL.

Trees beginning 347' from DER, 297' left of centerline, up to 700' MSL.

Trees beginning 583' from DER, 72' right of centerline, up to 703' MSL.

Tree 1818' from DER, 745' left of centerline, 722' MSL.

Tree 2326' from DER, 802' left of centerline, 738' MSL.

Tree 2535' from DER, 829' left of centerline, 740' MSL.

Rwy 35, terrain 4' from DER, 10' right of centerline, 651' MSL.

Trees, lighting beginning 9' from DER, 118' left of centerline, up to 37' AGL/675' MSL.

CON'T

TAKEOFF MINIMUMS, (OBSTACLE) DEPARTURE PROCEDURES, AND DIVERSE VECTOR AREA (RADAR VECTORS)

22223

TAKEOFF MINIMUMS, (OBSTACLE) DEPARTURE PROCEDURES, AND DIVERSE VECTOR AREA (RADAR VECTORS)

22223

DALLAS, TX (CON'T)

DALLAS EXEC (RBD) (CON'T)

Rwy 35 (CON'T), lighting 41' from DER, 159' right of centerline, 656' MSL.
Building, trees beginning 82' from DER, 309' right of centerline, up to 671' MSL.
Trees beginning 231' from DER, 521' left of centerline, up to 679' MSL.
Trees beginning 402' from DER, 370' left of centerline, up to 680' MSL.
Trees beginning 980' from DER, 284' right of centerline, up to 682' MSL.
Tree 1288' from DER, 779' right of centerline, 685' MSL.
Trees beginning 1386' from DER, 704' right of centerline, up to 691' MSL.

DALLAS LOVE FLD (DAL)

TAKEOFF MINIMUMS AND (OBSTACLE) DEPARTURE PROCEDURES AMDT 17 17AUG17 (21112) (FAA)

TAKEOFF MINIMUMS:

Rwy 13L, std. w/min. climb of 290' per NM to 1700.
Rwy 13R, std. w/min. climb of 320' per NM to 1700.

DEPARTURE PROCEDURE:

Rwys 31L/R, climb heading 313° to 1300 before turning left.

TAKEOFF OBSTACLE NOTES:

Rwy 13L, pole 844' from DER, 637' left of centerline, 31' AGL/521' MSL.
Pole 1166' from DER, 604' left of centerline, 32' AGL/525' MSL.
Rwy 13R, pole 662' from DER, 601' right of centerline, 29' AGL/501' MSL.
Sign 778' from DER, 669' left of centerline, 30' AGL/503' MSL.
Sign 1423' from DER, 763' left of centerline, 42' AGL/516' MSL.
Stack 2234' from DER, 979' left of centerline, 62' AGL/537' MSL.
Rwy 31L, lights 10' from DER, 55' left and 55' right of centerline, 1' AGL/477' MSL.
Rwy 31R, pole 39' from DER, 500' left of centerline, 27' AGL/487' MSL.
Pole 1531' from DER, 720' right of centerline, 61' AGL/521' MSL.

MCKINNEY NTL (TKI)

TAKEOFF MINIMUMS AND (OBSTACLE) DEPARTURE PROCEDURES AMDT 2A 23JUN16 (21112) (FAA)

TAKEOFF OBSTACLE NOTES:

Rwy 18, tree 2445' from DER, 689' right of centerline, 70' AGL/653' MSL.
Rwy 36, tree 1126' from DER, 703' right of centerline, 35' AGL/610' MSL.

DALLAS-FORT WORTH, TX

DALLAS-FORT WORTH INTL (DFW)

TAKEOFF MINIMUMS AND (OBSTACLE) DEPARTURE PROCEDURES AMDT 7 27JAN22 (22027) (FAA)

TAKEOFF MINIMUMS:

Rwy 35R, 300-1¼ or std. w/min. climb of 230' per NM to 800, or alternatively, with std. takeoff minimums and a normal 200' per NM climb gradient, takeoff must occur no later than 1700 feet prior to DER.

DEPARTURE PROCEDURE:

Rwy 35R, climb heading 356° to 1200 before proceeding on course.

TAKEOFF OBSTACLE NOTES:

Rwy 13R, sign 104' from DER, 479' left of centerline, 3' AGL/581' MSL.
Rwy 18L, terrain 1' from DER, 497' right of centerline, 577' MSL.
Rwy 31L, sign 113' from DER, 390' right of centerline, 5' AGL/594' MSL.
Tree 785' from DER, 696' right of centerline, 624' MSL.
Trees beginning 795' from DER, 618' left of centerline, up to 630' MSL.
Trees beginning 933' from DER, 712' right of centerline, up to 631' MSL.
Trees beginning 1241' from DER, 743' right of centerline, up to 641' MSL.
Trees beginning 1501' from DER, 741' right of centerline, up to 649' MSL.
Tree 2034' from DER, 873' left of centerline, 654' MSL.
Pole 3402' from DER, 1399' right of centerline, 708' MSL.
Transmission line 3433' from DER, 1401' right of centerline, 110' AGL/718' MSL.
Transmission lines beginning 4097' from DER, 1407' right of centerline, up to 105' AGL/730' MSL.
Rwy 31R, sign 206' from DER, 552' left of centerline, 10' AGL/559' MSL.
Pole 378' from DER, 255' right of centerline, 15' AGL/564' MSL.
Antenna, building beginning 718' from DER, 633' left of centerline, up to 49' AGL/604' MSL.
Rwy 35L, sign 67' from DER, 431' left of centerline, 4' AGL/569' MSL.
Terrain 134' from DER, 495' left of centerline, 570' MSL.
Tank 1992' from DER, 971' left of centerline, 77' AGL/643' MSL.
Rwy 35R, building 5468' from DER, 795' right of centerline, 144' AGL/680' MSL.
Buildings beginning 1.1 NM from DER, 206' right of centerline, up to 173' AGL/714' MSL.
Building 1.4 NM from DER, 2751' left of centerline, 204' AGL/742' MSL.

11 AUG 2022 to 08 SEP 2022

11 AUG 2022 to 08 SEP 2022

TAKEOFF MINIMUMS, (OBSTACLE) DEPARTURE PROCEDURES, AND DIVERSE VECTOR AREA (RADAR VECTORS)

22223

SC-2



22223

DECATUR, TX**DECATUR MUNI (LUD)****TAKEOFF MINIMUMS AND (OBSTACLE) DEPARTURE PROCEDURES**

AMDT 3 18SEP14 (14261) (FAA)

TAKEOFF MINIMUMS:**Rwy 35**, std. w/min. climb of 320' per NM to 3500, or 1600-3 for climb in visual conditions.**DEPARTURE PROCEDURE:****Rwy 17**, climb heading 163° to 1700 before proceeding North.**Rwy 35**, obtain ATC approval for climb in visual conditions when requesting IFR clearance. Climb in visual conditions to cross Decatur Muni airport at or above 2500 before proceeding on course.**TAKEOFF OBSTACLE NOTES:****Rwy 17**, trees and poles beginning 120' from DER, 372' left of centerline, up to 51' AGL/1071' MSL.

Terrain and trees beginning 327' from DER, 452' right of centerline, up to 18' AGL/1067' MSL.

Poles 766' from DER, 45' right of centerline, up to 33' AGL/1065' MSL.

Poles 2287' from DER, 662' left of centerline, up to 54' AGL/1095' MSL.

Stacks and buildings beginning 2495' from DER, 786' right of centerline, up to 62' AGL/1112' MSL.

Tower 5149' from DER, 895' right of centerline, 117' AGL/1173' MSL.

Rwy 35, trees beginning 378' from DER, 276' right of centerline, up to 31' AGL/1050' MSL.**DENTON, TX****DENTON ENTERPRISE (DTO)****TAKEOFF MINIMUMS AND (OBSTACLE) DEPARTURE PROCEDURES**

AMDT 4 31DEC20 (20366) (FAA)

TAKEOFF OBSTACLE NOTES:**Rwy 18L**, tree 303' from DER, 525' right of centerline, 636' MSL.

Trees beginning 372' from DER, 571' right of centerline, up to 54' AGL/654' MSL.

Rwy 18R, vegetation 81' from DER, 489' left of centerline, 634' MSL.

Tree 85' from DER, 447' left of centerline, 637' MSL.

Tree 151' from DER, 415' right of centerline, 15' AGL/636' MSL.

Tree 225' from DER, 475' right of centerline, 638' MSL.

Tree 290' from DER, 562' right of centerline, 642' MSL.

Tree 374' from DER, 458' right of centerline, 643' MSL.

Trees beginning 432' from DER, 128' right of centerline, up to 41' AGL/651' MSL.

Trees beginning 595' from DER, 8' left of centerline, up to 652' MSL.

Tree 790' from DER, 323' right of centerline, 62' AGL/660' MSL.

Trees beginning 913' from DER, 1' right of centerline, up to 68' AGL/663' MSL.

Tree 1070' from DER, 90' left of centerline, 49' AGL/654' MSL.

Trees beginning 1098' from DER, 3' left of centerline, up to 67' AGL/664' MSL.

Rwy 36L, terrain 13' from DER, 193' left of centerline, 646' MSL.

NAVAID, vegetation beginning 123' from DER, 220' right of centerline, up to 48' AGL/684' MSL.

Fence 141' from DER, 436' left of centerline, 648' MSL.

Pole, tree beginning 184' from DER, 331' left of centerline, up to 672' MSL.

Tree 2314' from DER, 700' left of centerline, 68' AGL/704' MSL.

Rwy 36R, tree 574' from DER, 541' right of centerline, 659' MSL.

Trees beginning 716' from DER, 519' right of centerline, up to 682' MSL.

Tree 864' from DER, 496' left of centerline, 663' MSL.

Tree 1278' from DER, 554' left of centerline, 672' MSL.

DUMAS, TX**MOORE COUNTY (DUX)****TAKEOFF MINIMUMS AND (OBSTACLE) DEPARTURE PROCEDURES**

ORIG 11FEB10 (10042) (FAA)

TAKEOFF OBSTACLE NOTES:**Rwy 1**, multiple poles beginning 766' from DER, 455' right of centerline, up to 31' AGL/3724' MSL.

Multiple poles and buildings beginning 55' from DER, 438' left of centerline, up to 30' AGL/3723' MSL.

Vehicle on road 47' from DER, on centerline, 15' AGL/3712' MSL.

Trees 1240' from DER, 764' left of centerline, up to 100' AGL/3789' MSL.

Trees 2049' from DER, 933' right of centerline, up to 100' AGL/3790' MSL.

Rwy 19, trees 226' from DER, 538' right of centerline, up to 100' AGL/3809' MSL.

Trees 228' from DER, 533' left of centerline, up to 100' AGL/3804' MSL.

Rwy 14, tree 879' from DER, on centerline, 100' AGL/3788' MSL.**Rwy 32**, tree 1480' from DER, 15' left of centerline, 100' AGL/3794' MSL.

11 AUG 2022 to 08 SEP 2022

11 AUG 2022 to 08 SEP 2022

22223

SC-2

TAKEOFF MINIMUMS, (OBSTACLE) DEPARTURE PROCEDURES, AND DIVERSE VECTOR AREA (RADAR VECTORS)

22223

EASTLAND, TX

EASTLAND MUNI (ETN)

TAKEOFF MINIMUMS AND (OBSTACLE) DEPARTURE PROCEDURES

AMDT 1 13JAN11 (11013) (FAA)

TAKEOFF MINIMUMS:

Rwy 35, std. w/min. climb of 215' per NM to 2300 or alternatively, with std. takeoff minimums and normal 200' per NM climb gradient, takeoff must occur no later than 1100' prior to DER, or 1000-3 for climb in visual conditions.

DEPARTURE PROCEDURE:

Rwy 17, climb heading 175° to 2000' before turning East.

Rwy 35, for climb in visual conditions: cross Eastland Muni at or above 2300 MSL before proceeding on course.

TAKEOFF OBSTACLE NOTES:

Rwy 17, tree 48' from DER, 317' left of centerline, 27' AGL/1466' MSL.

Tree 521' from DER, 541' left of centerline, 34' AGL/1465' MSL.

Tree 896' from DER, 408' left of centerline, 55' AGL/1482' MSL.

Pole 460' from DER, 439' left of centerline, 21' AGL/1457' MSL.

Pole 640' from DER, 466' left of centerline, 31' AGL/1463' MSL.

Pole 650' from DER, 277' left of centerline, 28' AGL/1465' MSL.

Numerous trees and bushes beginning 15' from DER, 248' right of center line, up to 100' AGL/1488' MSL.

Fence 81' from DER, 250' right of centerline, 4' AGL/1449' MSL.

Train on rail 497' from DER left and right of centerline, 23' AGL/1463' MSL.

Rwy 35, numerous trees beginning 38' from DER, right and left of center line, up to 100' AGL/1580' MSL.

Numerous poles starting 1188' from DER, 64' right of centerline, up to 40' AGL/1588' MSL.

Pole 1683' from DER, 51' left of centerline, 21' AGL/1568' MSL.

Pole 2610' from DER, 166' left of centerline, 20' AGL/1561' MSL.

Catenary 1068' from DER, left to right of centerline, 52' AGL/1581' MSL.

Ground 76' from DER, left and right of centerline, 1565' MSL.

Vehicle on road 1291' from DER, left and right of centerline, 15' AGL/1572 MSL.

Oil well 1287' from DER, 293' left of centerline, 16' AGL/1519' MSL.

Oil well 2033' from DER, 499' right of centerline, 14' AGL/1531' MSL.

ENNIS, TX

ENNIS MUNI (F41)

TAKEOFF MINIMUMS AND (OBSTACLE) DEPARTURE PROCEDURES

ORIG-A 30JAN10 (20030) (FAA)

TAKEOFF OBSTACLE NOTES:

Rwy 16, vehicle on road 362' from DER, 561' right of centerline, 15' AGL/494' MSL.

Trees beginning 870' from DER, left and right of centerline, up to 100'/AGL 579' MSL.

Rwy 34, vehicles on road beginning 423' from DER, left and right of centerline, up to 15' AGL/534' MSL.

Trees beginning 40' from DER, 300' left of centerline, up to 100' AGL/609' MSL.

Trees beginning 40' from DER, 300' right of centerline, up to 100' AGL/609' MSL.

FLOYDADA, TX

FLOYDADA MUNI (41F)

TAKEOFF MINIMUMS AND (OBSTACLE) DEPARTURE PROCEDURES

ORIG 22OCT09 (09295) (FAA)

TAKEOFF OBSTACLE NOTES:

Rwy 17, silo 3320' from DER, 355' right of centerline, 149' AGL/3329' MSL.

Building 3648' from DER, 248' right of centerline, 108' AGL/3289' MSL.

Rwy 35, road and vehicle beginning 525' from DER, 19' left and right of centerline, up to 15' AGL/3202' MSL.

FOLLETT, TX

FOLLETT-LIPSCOMB COUNTY (T93)

TAKEOFF MINIMUMS AND (OBSTACLE) DEPARTURE PROCEDURES

ORIG 03JUN10 (10154) (FAA)

TAKEOFF OBSTACLE NOTES:

Rwy 17, tree 3005' from DER, 346' right of centerline, 50' AGL/2689' MSL.

Tree 444' from DER, 595' left of centerline, 50' AGL/2639' MSL.

Vehicle 546' from DER, 350' left of centerline, 15' AGL/2624' MSL.

Rwy 35, tree 643' from DER, 624' right of centerline, 50' AGL/2579' MSL.

11 AUG 2022 to 08 SEP 2022

11 AUG 2022 to 08 SEP 2022

22223

SC-2

TAKEOFF MINIMUMS, (OBSTACLE) DEPARTURE PROCEDURES, AND DIVERSE VECTOR AREA (RADAR VECTORS)

22223

FORT WORTH, TX

BOURLAND FLD (50F)

TAKEOFF MINIMUMS AND (OBSTACLE) DEPARTURE PROCEDURES

AMDT 2 18SEP14 (21112) (FAA)

TAKEOFF MINIMUMS:

Rwy 17, 300-2 or std. w/min. climb of 512' per NM to 1300.

DEPARTURE PROCEDURE:

Rwy 17, climb heading 165° to 1400 before turning right.

TAKEOFF OBSTACLE NOTES:

Rwy 17, trees beginning 9' from DER, 87' right of centerline, up to 60' AGL/886' MSL.

Trees beginning 17' from DER, 113' left of centerline, up to 57' AGL/886' MSL.

Trees 188' from DER, 28' left of centerline, up to 15' AGL/844' MSL.

Terrain, pole, vehicles on road, and trees beginning 680' from DER, 15' right of centerline, up to 38' AGL/988' MSL.

Terrain, vehicles on road, and trees beginning 871' from DER, 10' left of centerline, up to 47' AGL/987' MSL.

Trees 2723' from DER, 533' right of centerline, up to 32' AGL/1011' MSL.

Transmission tower 1.4 NM from DER, 2471' right of centerline, 123' AGL/1123' MSL.

Transmission tower 1.5 NM from DER, 2849' right of centerline, 93' AGL/1092' MSL.

Rwy 35, terrain, fences, vehicles in parking lot, vehicles on road, signs, poles, and trees beginning 22' from DER, 30' left of centerline, up to 26' AGL/935' MSL.

Terrain, fences, vehicles on road, poles, trees, and signs beginning 165' from DER, 42' right of centerline, up to 42' AGL/925' MSL.

Terrain, vehicles in parking lot, vehicles on road, and trees beginning 1013' from DER, 29' right of centerline, up to 15' AGL/956' MSL.

Terrain, vehicles in parking lot, vehicles on road, and trees beginning 2606' from DER, 328' right of centerline, up to 16' AGL/995' MSL.

Terrain, vehicles in parking lot, vehicles on road, and trees beginning 2433' from DER, 663' left of centerline, up to 17' AGL/1006' MSL.

FORT WORTH ALLIANCE (AFW)

TAKEOFF MINIMUMS AND (OBSTACLE) DEPARTURE PROCEDURES

AMDT 2 29MAR18 (18088) (FAA)

TAKEOFF MINIMUMS:

Rwy 16L, 16R, 300-2¼ or std. w/min. climb of 220' per NM to 1100, or alternatively with std. takeoff minimums and a normal 200' per NM climb gradient, takeoff must occur no later than 1900 feet prior to DER.

DEPARTURE PROCEDURE:

Rwy 16R, climb heading 166° to 1100 before turning right.

TAKEOFF OBSTACLE NOTES:

Rwy 16L, vehicles on road beginning 59' from DER, 481' left of centerline, up to 677' MSL.

Multiple poles beginning 1069' from DER, 689' left of centerline, up to 43' AGL/700' MSL.

Water tower 1.7 NM from DER, 3109' right of centerline, 154' AGL/961' MSL.

Rwy 16R, fence 3' from DER, 249' right of centerline, 8' AGL/669' MSL.

Vehicles on road beginning 5' from DER, 10' right of centerline, up to 677' MSL.

Pole 1303' from DER, 518' right of centerline, 36' AGL/698' MSL.

Pole 1579' from DER, 876' right of centerline, 37' AGL/709' MSL.

Water tower 1.7 NM from DER, 2509' right of centerline, 154' AGL/961' MSL.

FORT WORTH MEACHAM INTL (FTW)

TAKEOFF MINIMUMS AND (OBSTACLE) DEPARTURE PROCEDURES

AMDT 8 08NOV18 (18312) (FAA)

TAKEOFF MINIMUMS:

Rwy 34, 300-2 or std. w/min. climb of 225' per NM to 1100, or alternatively, with std. takeoff minimums and a normal 200' per NM climb gradient, takeoff must occur no later than 2000' prior to DER.

Rwy 35, 300-1¼ or std. w/min. climb of 210' per NM to 900, or alternatively, with std. takeoff minimums and a normal 200' per NM climb gradient, takeoff must occur no later than 1200' prior to DER.

DEPARTURE PROCEDURE:

Rwy 16, climb heading 166° to 1600 before proceeding on course.

Rwy 17, climb heading 164° to 1600 before proceeding on course.

TAKEOFF OBSTACLE NOTES:

Rwy 16, traverse way 587' from DER, 644' left of centerline, 689' MSL.

Rwy 17, vegetation 16' from DER, 159' right of centerline, 674' MSL.

Pole 140' from DER, 454' left of centerline, 34' AGL/677' MSL.

Trees and building beginning 506' from DER, 464' left of centerline, up to 69' AGL/718' MSL.

Tower, antennas, pole, and buildings beginning 956' from DER, 374' left of centerline, up to 59' AGL/722' MSL.

Rwy 34, traverse ways beginning 5' from DER, 236' left of centerline, up to 722' MSL.

Tree and poles beginning 974' from DER, 681' right of centerline, up to 746' MSL.

Pole 2351' from DER, 986' right of centerline, 39' AGL/770' MSL.

Pole 2469' from DER, 1138' right of centerline, 35' AGL/774' MSL.

Pole 2628' from DER, 1167' right of centerline, 47' AGL/787' MSL.

Elevator and building beginning 1.5 NM from DER, 2768' right of centerline, 254' AGL/970' MSL.

Rwy 35, trees and traverse way beginning 0' from DER, 248' left of centerline, up to 690' MSL.

Terrain beginning 19' from DER, 342' right of centerline, up to 687' MSL.

Trees beginning 302' from DER, 479' left of centerline, up to 51' AGL/691' MSL.

Traverse way, terrain, poles, and fence beginning 328' from DER, 229' right of centerline, up to 697' MSL.

Terrain 978' from DER, 695' right of centerline, 701' MSL.

CON'T

TAKEOFF MINIMUMS, (OBSTACLE) DEPARTURE PROCEDURES, AND DIVERSE VECTOR AREA (RADAR VECTORS)

22223

SC-2

11 AUG 2022 to 08 SEP 2022

11 AUG 2022 to 08 SEP 2022


TAKEOFF MINIMUMS, (OBSTACLE) DEPARTURE PROCEDURES, AND


DIVERSE VECTOR AREA (RADAR VECTORS)

22223

FORT WORTH, TX (CON'T)**FORT WORTH MEACHAM INTL (FTW) (CON'T)**

Rwy 35 (CON'T), traverse way, terrain, and fence beginning 990' from DER, 661' right of centerline, up to 713' MSL.
 Traverse way, fence, and terrain beginning 1008' from DER, 118' right of centerline, up to 714' MSL.
 Tree 1342' from DER, 838' left of centerline, 29' AGL/705' MSL.
 Traverse way and dam beginning 1343' from DER, 1' right of centerline, up to 715' MSL.
 Sign 1531' from DER, 282' left of centerline, 6' AGL/707' MSL.
 Traverse way beginning 1584' from DER, 718' right of centerline, 720' MSL.
 Pole 3020' from DER, 1209' left of centerline, 62' AGL/755' MSL.
 Transmission line beginning 6006' from DER, 1288' left of centerline, up to 99' AGL/821' MSL.
 Transmission line 1 NM from DER, 1957' left of centerline, 98' AGL/826' MSL.

FORT WORTH SPINKS (FWS)**TAKEOFF MINIMUMS AND (OBSTACLE) DEPARTURE PROCEDURES**

AMDT 3A 27JAN22 (22083) (FAA)

TAKEOFF MINIMUMS:**Rwys 18L, 36R**, NA-Environmental**DEPARTURE PROCEDURE:****Rwy 18R**, climb heading 177° to 1200 before turning right.**TAKEOFF OBSTACLE NOTES:**

Rwy 18R, transmission line 2482' from DER, 1003' right of centerline, 64' AGL/752' MSL.
 Tree 4909' from DER, 1556' left of centerline, 830' MSL.
Rwy 36L, transmission line 2942' from DER, 1189' left of centerline, 95' AGL/795' MSL.

KENETH COPELAND (4T2)**TAKEOFF MINIMUMS AND (OBSTACLE) DEPARTURE PROCEDURES**

ORIG 05JAN17 (17005) (FAA)

TAKEOFF OBSTACLE NOTES:

Rwy 17, trees, wall, and rd beginning 7' from DER, 65' right of centerline, up to 79' AGL/732' MSL.
 Wsk, grd, and trees beginning 46' from DER, 214' left of centerline, up to 24' AGL/685' MSL.
 Trees beginning 470' from DER, 291' left of centerline, up to 41' AGL/710' MSL.
 Trees beginning 1902' from DER, 390' left of centerline, up to 79' AGL/727' MSL.
 Trees beginning 1986' from DER, 559' left of centerline, up to 82' AGL/729' MSL.
 Trees beginning 2382' from DER, 885' left of centerline, up to 86' AGL/742' MSL.
Rwy 35, wall 2' from DER, 228' right of centerline, 3' AGL/691' MSL.
 Grd 7' from DER, 189' left of centerline, 1' AGL/689' MSL.
 Grd beginning 8' from DER, 359' right of centerline, up to 698' MSL.
 Tree 53' from DER, 354' left of centerline, 21' AGL/700' MSL.
 Trees, grd beginning 117' from DER, 200' right of centerline, up to 30' AGL/716' MSL.
 Rd, trees beginning 241' from DER, 271' right of centerline, up to 20' AGL/719' MSL.
 Trees beginning 285' from DER, 487' left of centerline, up to 43' AGL/714' MSL.
 Trees beginning 913' from DER, 610' right of centerline, up to 44' AGL/728' MSL.
 Trees beginning 1000' from DER, 235' right of centerline, up to 44' AGL/728' MSL.
 Trees beginning 2040' from DER, 99' left of centerline, up to 99' AGL/751' MSL.

FORT WORTH NAS JRB (CARSWELL FLD) (KNFW)**FORT WORTH, TX****TAKEOFF MINIMUMS AND (OBSTACLE) DEPARTURE PROCEDURES**

AMDT 1 24FEB22 (22055) (USN)

TAKEOFF OBSTACLE NOTES:

Rwy 18, antenna 1' from DER, 249' right of centerline, 13' AGL/652' MSL.
 Terrain 0' from DER, 500' left of centerline, 653' MSL.
 Terrain 1014' from DER, 772' right of centerline, 677' MSL.
 Terrain 380' from DER, 602' right of centerline, 667' MSL.

11 AUG 2022 to 08 SEP 2022

11 AUG 2022 to 08 SEP 2022


TAKEOFF MINIMUMS, (OBSTACLE) DEPARTURE PROCEDURES, AND


DIVERSE VECTOR AREA (RADAR VECTORS)

22223

TAKEOFF MINIMUMS, (OBSTACLE) DEPARTURE PROCEDURES, AND DIVERSE VECTOR AREA (RADAR VECTORS)

22223

GAINESVILLE, TX

GAINESVILLE MUNI (GLE)

TAKEOFF MINIMUMS AND (OBSTACLE) DEPARTURE PROCEDURES

AMDT 1 05JAN17 (17005) (FAA)

TAKEOFF OBSTACLE NOTES:

- Rwy 13**, trees beginning 13' from DER, 147' left of centerline, up to 12' AGL/804' MSL.
Tree 185' from DER, 513' left of centerline, 18' AGL/809' MSL.
- Rwy 18**, REIL 41' from DER, 126' right of centerline, 2' AGL/794' MSL.
REIL 42' from DER, 125' left of centerline, 3' AGL/794' MSL.
Tree 85' from DER, 468' left of centerline, 24' AGL/815' MSL.
Tree and poles beginning 156' from DER, 502' left of centerline, up to 32' AGL/822' MSL.
Vent on bldg and poles beginning 478' from DER, 500' left of centerline, up to 827' MSL.
- Rwy 31**, tree 18' from DER, 237' right of centerline, 22' AGL/847' MSL.
Trees beginning 23' from DER, 271' right of centerline, up to 24' AGL/850' MSL.
Trees and fence beginning 148' from DER, 335' right of centerline, up to 28' AGL/855' MSL.
Vent on bldg 613' from DER, 641' left of centerline, 854' MSL.
Vent on bldg and bldgs beginning 737' from DER, 524' left of centerline, up to 857' MSL.
Trees beginning 1610' from DER, 519' left of centerline, up to 873' MSL.
Trees beginning 1711' from DER, 114' left of centerline, up to 64' AGL/885' MSL.
Trees beginning 1824' from DER, 29' left of centerline, up to 886' MSL.
Trees beginning 1940' from DER, 52' left of centerline, up to 76' AGL/890' MSL.
Trees beginning 1990' from DER, 8' left of centerline, up to 77' AGL/895' MSL.
Tree 2227' from DER, 142' right of centerline, 68' AGL/885' MSL.
Tree 2597' from DER, 674' right of centerline, 69' AGL/893' MSL.
- Rwy 36**, REIL 37' from DER, 124' left of centerline, 3' AGL/847' MSL.
REIL 37' from DER, 124' right of centerline, 3' AGL/847' MSL.
Bush, grd, and fence beginning 115' from DER, 299' right of centerline, up to 868' MSL.
Fence and grd beginning 150' from DER, 417' left of centerline, up to 5' AGL/864' MSL.
Tree, bush, and grd beginning 337' from DER, 369' left of centerline, up to 865' MSL.
Fence and grd beginning 596' from DER, 400' left of centerline, up to 868' MSL.
Bush 799' from DER, 514' right of centerline, 871' MSL.
Fence 806' from DER, 364' left of centerline, 869' MSL.
Tree 947' from DER, 429' right of centerline, 873' MSL.
Tree 1060' from DER, 459' left of centerline, 878' MSL.
Poles and trees beginning 1233' from DER, 57' left of centerline, up to 31' AGL/890' MSL.
Poles and tree beginning 1289' from DER, 131' right of centerline, up to 33' AGL/882' MSL.
Tree 2642' from DER, 466' left of centerline, 922' MSL.

GILMER, TX

FOX STEPHENS FLD/GILMER MUNI (JXI)

TAKEOFF MINIMUMS AND (OBSTACLE) DEPARTURE PROCEDURES

AMDT 1 19SEP13 (22195) (FAA)

TAKEOFF MINIMUMS:

- Rwy 18**, 300-1 or std. w/min. climb of 445' per NM to 700.

DEPARTURE PROCEDURE:

- Rwy 18**, climb heading 177° to 1000 before turning left.

TAKEOFF OBSTACLE NOTES:

- Rwy 18**, trees beginning 262' from DER, 226' left of centerline, up to 100' AGL/529' MSL.
Trees beginning 495' from DER, 125' right of centerline, up to 100' AGL/569' MSL.
- Rwy 36**, trees beginning 12' from DER, 131' left of centerline, up to 100' AGL/510' MSL.
Trees beginning 236' from DER, 34' right of centerline, up to 100' AGL/509' MSL.
Tree 2400' from DER, 436' left of centerline, 100' AGL/519' MSL.
Light tower 2806' from DER, 825' right of centerline, 150' AGL/540' MSL.
Light tower 3277' from DER, 1284' right of centerline, 150' AGL/546' MSL.
Tree 3820' from DER, 728' left of centerline, 100' AGL/539' MSL.

GLADEWATER, TX

GLADEWATER MUNI (07F)

TAKEOFF MINIMUMS AND (OBSTACLE) DEPARTURE PROCEDURES

AMDT 1 02JUN11 (11153) (FAA)

TAKEOFF MINIMUMS:

- Rwy 17**, 300-1¼ or std. w/min. climb of 285' per NM to 600.
Rwy 32, 300-1.
Rwy 35, Std. w/min. climb of 280' per NM to 1300 or 1100-2 ½ for climb in visual conditions.

DEPARTURE PROCEDURE:

- Rwy 32**, climb heading 320° to 1100 before turning right.
Rwy 35, for climb in visual conditions cross Gladewater Municipal Airport at or above 1200 before proceeding on course.

CON'T

11 AUG 2022 to 08 SEP 2022

11 AUG 2022 to 08 SEP 2022

TAKEOFF MINIMUMS, (OBSTACLE) DEPARTURE PROCEDURES, AND DIVERSE VECTOR AREA (RADAR VECTORS)

22223

SC-2

TAKEOFF MINIMUMS, (OBSTACLE) DEPARTURE PROCEDURES, AND DIVERSE VECTOR AREA (RADAR VECTORS)

22223

GLADEWATER, TX (CON'T)

GLADEWATER MUNI (07F) (CON'T)

TAKEOFF OBSTACLE NOTES:

- Rwy 14**, vehicles on roadway beginning 450' from DER, left and right of centerline, up to 17' AGL/311' MSL.
- Trees beginning 770' from DER, left and right of centerline, up to 100' AGL/394' MSL.
- Power lines 3524' from DER, left to right of centerline, 150' AGL/420' MSL.
- Rwy 17**, vehicles on roadway beginning 212' from DER, left and right of centerline, up to 17' AGL/311' MSL.
- Trees beginning 624' from DER, left and right of centerline, up to 100' AGL/509' MSL.
- Power lines 1807' from DER, left to right of centerline, 150' AGL/439' MSL.
- Rwy 32**, trees beginning 12' from DER, left and right of centerline, up to 100' AGL/429' MSL.
- Rwy 35**, trees beginning 47' from DER, left and right of centerline, up to 100' AGL/429' MSL.
- Power lines 1.4 NM from DER, 844' right of centerline, 75' AGL/520' MSL.

GRAFORD, TX

POSSUM KINGDOM (F35)

TAKEOFF MINIMUMS AND (OBSTACLE) DEPARTURE PROCEDURES

ORIG-A 03JUN10 (10154) (FAA)

TAKEOFF MINIMUMS:

- Rwy 20**, 400-2½ or std. w/ a min. climb of 212' per NM to 1500 or alternatively, with standard takeoff minimums and a normal 200' per NM climb gradient, takeoff must occur no later than 1600' prior to DER.

DEPARTURE PROCEDURE:

- Rwy 20**, climb heading 204° to 1500 before turning left.

TAKEOFF OBSTACLE NOTES:

- Rwy 2**, trees beginning 31' from DER, 22' left of centerline, up to 100' AGL/1099' MSL.
- Trees beginning 1023' from DER, 114' right of centerline, up to 100' AGL/1129' MSL.
- Rwy 20**, vehicle on roadway 116' from DER, 498' right of centerline, 15' AGL/1024' MSL.
- Trees beginning 494' from DER, 126' right of centerline, up to 100' AGL/1109' MSL.
- Trees beginning 977' from DER, 115' left of centerline, up to 100' AGL/1109' MSL.
- Trees beginning 2.29 miles from DER, 1679' left of centerline, up to 100' AGL/1329' MSL.

GRAHAM, TX

GRAHAM MUNI (RPH)

TAKEOFF MINIMUMS AND (OBSTACLE) DEPARTURE PROCEDURES

AMDT 3 20JUN19 (19171) (FAA)

TAKEOFF MINIMUMS:

- Rwy 3**, 300-1% or std. w/min. climb of 210' per NM to 1400.
- Rwy 36**, 300-1%.

DEPARTURE PROCEDURE:

- Rwy 18**, climb heading 190° to 2000 before turning east.
- Rwy 21**, climb heading 227° to 2000 before turning north.

TAKEOFF OBSTACLE NOTES:

- Rwy 3**, trees beginning 46' from DER, 91' right of centerline, up to 1149' MSL.
- Tree 92' from DER, 240' left of centerline, 1123' MSL.
- Tree 253' from DER, 253' left of centerline, 1131' MSL.
- Tree 322' from DER, 354' left of centerline, 1133' MSL.
- Tree 424' from DER, 290' left of centerline, 1140' MSL.
- Tree 439' from DER, 90' left of centerline, 1145' MSL.
- Tree 550' from DER, 313' left of centerline, 1146' MSL.
- Tree 554' from DER, 219' left of centerline, 1148' MSL.
- Pole, tower, tree beginning 599' from DER, 11' left of centerline, up to 38' AGL/1154' MSL.
- Trees beginning 734' from DER, 88' right of centerline, up to 1151' MSL.
- Tree 1.3 NM from DER, 2322' left of centerline, 100' AGL/1329' MSL.
- Rwy 18**, trees beginning 102' from DER, 31' left of centerline, up to 100' AGL/1199' MSL.
- Tree 179' from DER, 282' right of centerline, 100' AGL/1199' MSL.
- Rwy 21**, trees beginning 24' from DER, 32' left of centerline, up to 1127' MSL.
- Tree 33' from DER, 373' right of centerline, 1124' MSL.
- Pole, tree beginning 35' from DER, 82' right of centerline, up to 29' AGL/1139' MSL.
- Pole, tree, transmission line beginning 229' from DER, 252' right of centerline, up to 45' AGL/1159' MSL.
- Transmission line beginning 1598' from DER, 106' left of centerline, up to 80' AGL/1170' MSL.
- Rwy 36**, other 0' from DER, 53' left of centerline, 7' AGL/1113' MSL.
- Pole 21' from DER, 195' left of centerline, 30' AGL/1141' MSL.
- Vehicles on roadway beginning 48' from DER, 148' left of centerline, up to 17' AGL/1156' MSL.
- Pole, tree, transmission line beginning 229' from DER, 252' right of centerline, up to 45' AGL/1159' MSL.
- Pole 86' from DER, 381' left of centerline, 50' AGL/1168' MSL.
- Vehicles on roadway, bldg beginning 165' from DER, 115' right of centerline, up to 17' AGL/1126' MSL.
- Tree, bldg beginning 212' from DER, 65' left of centerline, up to 100' AGL/1259' MSL.
- Bldg 369' from DER, 47' right of centerline, 20' AGL/1129' MSL.
- Tree 923' from DER, 735' left of centerline, 100' AGL/1339' MSL.

11 AUG 2022 to 08 SEP 2022

11 AUG 2022 to 08 SEP 2022

TAKEOFF MINIMUMS, (OBSTACLE) DEPARTURE PROCEDURES, AND DIVERSE VECTOR AREA (RADAR VECTORS)

22223

SC-2

TAKEOFF MINIMUMS, (OBSTACLE) DEPARTURE PROCEDURES, AND DIVERSE VECTOR AREA (RADAR VECTORS)

22223

GRANBURY, TX

GRANBURY RGNL (GDJ)

TAKEOFF MINIMUMS AND (OBSTACLE) DEPARTURE PROCEDURES

AMDT 2 05MAY11 (11125) (FAA)

TAKEOFF MINIMUMS:

Rwy 14, 300-1.

DEPARTURE PROCEDURE:

Rwy 14, climb heading 144° to 1700 before turning right.

TAKEOFF OBSTACLE NOTES:

Rwy 14, vehicles on road beginning 1020' from DER, on centerline, 15' AGL/814' MSL.

Trees and power poles beginning at DER, 75' right of centerline, up to 100' AGL/879' MSL.

Trees, power poles, light poles and vehicles on road beginning at DER, 251' left of centerline, up to 100' AGL/899' MSL.

Rwy 32, train on railroad tracks, transmission poles and tree beginning 339' from DER, 107' right of centerline,

76' AGL/845' MSL.

Trees, vehicles on road and bush beginning 14' from DER, 198' left of centerline, up to 46' AGL/815' MSL.

GRAND PRAIRIE, TX

GRAND PRAIRIE MUNI (GPM)

TAKEOFF MINIMUMS AND (OBSTACLE) DEPARTURE PROCEDURES

AMDT 5A 17JUN21 (21168) (FAA)

DEPARTURE PROCEDURE:

Rwy 18, climb on heading 192° to 2500 before proceeding on course.

Rwy 36, climb on heading 357° to 1400 before turning southbound.

TAKEOFF OBSTACLE NOTES:

Rwy 18, antenna, tower, vehicles on road.

Sign, pole, and trees beginning 190' from DER, 410' right of centerline, up to 37' AGL/620' MSL.

Rwy 36, pole 2686' from DER, 121' left of centerline, 75' AGL/653' MSL.

GREENVILLE, TX

MAJORS (GVT)

TAKEOFF MINIMUMS AND (OBSTACLE) DEPARTURE PROCEDURES

AMDT 1 25SEP08 (08269) (FAA)

TAKEOFF OBSTACLE NOTES:

Rwy 17, trees beginning 1832' from DER, 397' right of centerline, up to 49' AGL/578' MSL.

GRUVER, TX

GRUVER MUNI (E19)

TAKEOFF MINIMUMS AND (OBSTACLE) DEPARTURE PROCEDURES

ORIG 20OCT11 (11293) (FAA)

TAKEOFF OBSTACLE NOTES:

Rwy 2, fence beginning 10' from DER, 284' right of centerline, 4' AGL/3191' MSL.

Rwy 20, vehicle on road 87' from DER, 467' left of centerline, 15' AGL/3219' MSL.

Fence beginning 22' from DER, 204' right of centerline, 4' AGL/3209' MSL.

HASKELL, TX

HASKELL MUNI (15F)

TAKEOFF MINIMUMS AND (OBSTACLE) DEPARTURE PROCEDURES

AMDT 1 04APR91 (91094) (FAA)

TAKEOFF MINIMUMS:

Rwy 18, 600-2 or std. with a min. climb of 340' per NM to 2300.

DEPARTURE PROCEDURE:

Rwy 18, climb runway heading to 2300 before proceeding on course.

HENDERSON, TX

RUSK COUNTY (RFI)

TAKEOFF MINIMUMS AND (OBSTACLE) DEPARTURE PROCEDURES

AMDT 2 08APR10 (10098) (FAA)

TAKEOFF MINIMUMS:

Rwy 12, 300-1.

Rwy 30, 300-1½ or std. w/ min. climb of 282' per NM to 700.

DEPARTURE PROCEDURE:

Rwy 12, climb heading 123° to 1100 before turning northbound.

Rwy 30, climb heading 303° to 2100 before turning northbound.

Rwy 35, climb heading 347° to 1900 before turning westbound.

TAKEOFF OBSTACLE NOTES:

Rwy 12, multiple trees beginning 143' from DER, 440' right of centerline, up to 100' AGL/549' MSL.

Multiple trees beginning 237' from DER, 59' left of centerline, up to 100' AGL/609' MSL.

Vehicle on road beginning 652' from DER, 401' left of centerline, up to 15' AGL/464' MSL.

Terrain beginning 82' from DER, 18' right of centerline 447' MSL.

Terrain beginning 291' from DER, 132' left of centerline, 506' MSL.

CON'T

TAKEOFF MINIMUMS, (OBSTACLE) DEPARTURE PROCEDURES, AND DIVERSE VECTOR AREA (RADAR VECTORS)

22223

TAKEOFF MINIMUMS, (OBSTACLE) DEPARTURE PROCEDURES, AND DIVERSE VECTOR AREA (RADAR VECTORS)

22223

HENDERSON, TX (CON'T)

RUSK COUNTY (RFI) (CON'T)

Rwy 17, multiple trees beginning 399' from DER, 86' right of centerline, up to 100' AGL/539' MSL.

Multiple trees beginning 163' from DER, 103' left of centerline, up to 100' AGL/549' MSL.

Rwy 30, multiple trees beginning 640' from DER, 116' right of centerline, up to 100' AGL/539' MSL.

Multiple trees beginning 478' from DER, 141' left of centerline, up to 100' AGL/539' MSL.

Terrain beginning 41' from DER, 334' right of centerline, 0' AGL/437' MSL.

Terrain beginning 102' from DER, 459' left of centerline, 0' AGL/437' MSL.

Rwy 35, vehicle on road beginning 145' from DER, 333' right of centerline, up to 15' AGL/454' MSL.

Trees beginning 1155' from DER, 353' right of centerline, up to 100' AGL/549' MSL.

Trees beginning 158' from DER, 269' left of centerline, up to 100' AGL/539' MSL.

HEREFORD, TX

HEREFORD MUNI (HRX)

TAKEOFF MINIMUMS AND (OBSTACLE) DEPARTURE PROCEDURES

ORIG 11FEB10 (10042) (FAA)

TAKEOFF MINIMUMS:

Rwys 14, 32, NA-Environmental.

TAKEOFF OBSTACLE NOTES:

Rwy 2, tree 68' from DER, 495' left of centerline, 50' AGL/3834' MSL.

Trees beginning 280' from DER, 535' right of centerline, up to 50' AGL/3834' MSL.

Trees beginning 984' from DER, 504' left of centerline, up to 50' AGL/3834' MSL.

Rwy 20, trees beginning 61' from DER, 461' right of centerline, up to 50' AGL/3839' MSL.

Trees beginning 497' from DER, 606' left of centerline, up to 50' AGL/3839' MSL.

Tree 1603' from DER, 760' right of centerline, 50' AGL/3829' MSL.

HIGGINS, TX

HIGGINS/LIPSCOMB COUNTY (1X1)

TAKEOFF MINIMUMS AND (OBSTACLE) DEPARTURE PROCEDURES

ORIG 03JUN10 (21336) (FAA)

TAKEOFF OBSTACLE NOTES:

Rwy 36, vehicles on road beginning at DER, 225' left of centerline and 317' right of centerline, up to 15' AGL/2594' MSL.

Trees beginning 427' from DER, on centerline, up to 60' AGL/2639' MSL.

HILLSBORO, TX

HILLSBORO MUNI (INJ)

TAKEOFF MINIMUMS AND (OBSTACLE) DEPARTURE PROCEDURES

ORIG 16FEB06 (06047) (FAA)

TAKEOFF MINIMUMS:

Rwy 16, 600-3 or std. w/ min. climb of 250' per NM to 1500, or 1100-2 ½ for climb in visual conditions.

DEPARTURE PROCEDURE:

Rwy 16, for climb in visual conditions: Cross Hillsboro Muni Airport at or above 1600 before proceeding on course.

LANCASTER, TX

LANCASTER RGNL (LNC)

TAKEOFF MINIMUMS AND (OBSTACLE) DEPARTURE PROCEDURES

AMDT 3 18SEP14 (14261) (FAA)

TAKEOFF MINIMUMS:

Rwy 31, 300-1¼ or std. w/min. climb of 205' per NM to 800, or alternatively, with standard takeoff minimums and a normal 200' per NM climb gradient, takeoff must occur no later than 1200' prior to DER.

DEPARTURE PROCEDURE:

Rwy 31, climb heading 314° to 1800 before turning left.

TAKEOFF OBSTACLE NOTES:

Rwy 31, trees 888' from DER, 637' right of centerline, up to 35' AGL/536' MSL.

Trees beginning 1133' from DER, 479' left of centerline, up to 45' AGL/541' MSL.

Transmission tower 1 NM from DER, 1685' right of centerline, 127' AGL/661' MSL.

LEVELLAND, TX

LEVELLAND MUNI (LLN)

TAKEOFF MINIMUMS AND (OBSTACLE) DEPARTURE PROCEDURES

AMDT 4A 02DEC21 (21336) (FAA)

TAKEOFF MINIMUMS:

Rwy 35, 400-2¼ or std. w/min. climb of 251' per NM to 4000.

DEPARTURE PROCEDURE:

Rwy 26, for climb in visual conditions cross Levelland Muni airport at or above 4400 before proceeding on course.

TAKEOFF OBSTACLE NOTES:

Rwy 8, tree 61' from DER, 451' left of centerline, 55' AGL/3564' MSL.

Rwy 26, pole 53' from DER, 308' right of centerline, 24' AGL/3543' MSL.

Tree 265' from DER, 414' right of centerline, 31' AGL/3550' MSL.

CON'T

TAKEOFF MINIMUMS, (OBSTACLE) DEPARTURE PROCEDURES, AND DIVERSE VECTOR AREA (RADAR VECTORS)

22223

SC-2

TAKEOFF MINIMUMS, (OBSTACLE) DEPARTURE PROCEDURES, AND DIVERSE VECTOR AREA (RADAR VECTORS)

22223

LEVELLAND, TX (CON'T)

LEVELLAND MUNI (LLN) (CON'T)

Rwy 17, vehicle on road 4' from DER, 387' left of centerline, 15' AGL/3522' MSL.

Vehicle on road 205' from DER, 388' left of centerline, 15' AGL/3521' MSL.

Tree 1291' from DER, 188' right of centerline, 55' AGL/3564' MSL.

Rwy 26, building 1271' from DER, 811' left of centerline, 80' AGL/3593' MSL.

Rwy 35, building 124' from DER, 492' left of centerline, 29' AGL/3518' MSL.

Poles beginning 1186' from DER, 235' left of centerline, up to 54' AGL/3543' MSL.

Trees beginning 1250' from DER, left and right of centerline, up to 55' AGL/3561' MSL.

LITTLEFIELD, TX

LITTLEFIELD TAYLOR BROWN MUNI (LIU)

TAKEOFF MINIMUMS AND (OBSTACLE) DEPARTURE PROCEDURES

ORIG 27JUN13 (13178) (FAA)

TAKEOFF OBSTACLE NOTES:

Rwy 1, trees beginning 391' from DER, 238' right of centerline, up to 55' AGL/3655' MSL.

Trees beginning 466' from DER, 277' left of centerline, up to 55' AGL/3655' MSL.

Rwy 13, power poles beginning 623' from DER, across centerline, up to 35' AGL/3630' MSL.

Trees beginning 1080' from DER, 694' left of centerline, up to 55' AGL/3650' MSL.

Rwy 19, poles beginning 665' from DER, 353' left of centerline, up to 52' AGL/3638' MSL.

Trees beginning 715' from DER, 521' left of centerline, up to 61' AGL/3644' MSL.

Trees beginning 765' from DER, 576' right of centerline, up to 74' AGL/3657' MSL.

Rwy 31, vehicle on road 365' from DER, left and right of centerline, up to 15' AGL/3635' MSL.

LONGVIEW, TX

EAST TEXAS RGNL (GGG)

TAKEOFF MINIMUMS AND (OBSTACLE) DEPARTURE PROCEDURES

AMDT 1 20NOV08 (08325) (FAA)

TAKEOFF OBSTACLE NOTES:

Rwy 13, multiple trees 720' from DER, 547' left of centerline, up to 50' AGL/404' MSL.

Multiple trees 1381' from DER, 600' right of centerline, up to 55' AGL/409' MSL.

Rwy 18, multiple trees beginning 790' from DER, left and right of centerline, up to 94' AGL/459' MSL.

Rwy 31, tree 1489' from DER, 842' left of centerline, 49' AGL/406' MSL.

Tree 1737' from DER, 755' right of centerline, 63' AGL/420' MSL.

Rwy 36, multiple trees beginning 1590' from DER, 520' left of centerline, up to 84' AGL/438' MSL.

Tree 2384' from DER, 18' right of centerline, 65' AGL/419' MSL.

LUBBOCK, TX

LUBBOCK PRESTON SMITH INTL (LBB)

TAKEOFF MINIMUMS AND (OBSTACLE) DEPARTURE PROCEDURES

AMDT 1 26JUL12 (12208) (FAA)

TAKEOFF OBSTACLE NOTES:

Rwy 17L, vehicle on road, 556' from DER, 162' left of centerline 15' AGL/3279' MSL.

Rwy 26, aircraft on taxiway 1174' from DER, on centerline, 42' AGL/ 3297' MSL.

Rwy 35R, aircraft on taxiway 218' from DER 422' left or right of centerline, 42' AGL/3317' MSL.

Rod on control tower, 2330' from DER, 877' left of centerline 136' AGL/3379' MSL.

MARSHALL, TX

HARRISON COUNTY (ASL)

TAKEOFF MINIMUMS AND (OBSTACLE) DEPARTURE PROCEDURES

ORIG 09FEB12 (12040) (FAA)

TAKEOFF MINIMUMS:

Rwy 2, 300-1 or std w/min. climb of 440' per NM to 600.

Rwy 33, 300-1/4.

TAKEOFF OBSTACLE NOTES:

Rwy 2, trees beginning 207' from DER, left and right of centerline, up to 100' AGL/439' MSL.

Trees beginning 1281' from DER, 371' right of centerline, up to 100' AGL/489' MSL.

Trees beginning 3102' from DER, 163' left of centerline, up to 100' AGL/509' MSL.

Power lines beginning 3119' from DER, left and right of centerline, up to 120' AGL/509' MSL.

Rwy 15, trees beginning 81' from DER, 472' right of centerline, up to 94' AGL/394' MSL.

Trees beginning 180' from DER, 212' left of centerline, up to 90' AGL/410' MSL.

Trees beginning 1872' from DER, left and right of centerline, up to 121' AGL/401' MSL.

Rwy 20, numerous trees, buildings, and poles beginning 31' from DER, left and right of centerline, up to 100' AGL/469' MSL.

Rwy 33, trees beginning 264' from DER, left and right of centerline, up to 100' AGL/459' MSL.

Light poles beginning 573' from DER, 365' left of centerline, up to 120' AGL/509' MSL.

Power lines beginning 1649' from DER, left and right of centerline, up to 120' AGL/509' MSL.

Trees beginning 1953' from DER, left and right of centerline, up to 100' AGL/529' MSL.

TAKEOFF MINIMUMS, (OBSTACLE) DEPARTURE PROCEDURES, AND DIVERSE VECTOR AREA (RADAR VECTORS)

22223

SC-2

TAKEOFF MINIMUMS, (OBSTACLE) DEPARTURE PROCEDURES, AND DIVERSE VECTOR AREA (RADAR VECTORS)

22223

MESQUITE, TX

MESQUITE METRO (HQZ)

TAKEOFF MINIMUMS AND (OBSTACLE) DEPARTURE PROCEDURES

AMDT 4A 25JUN15 (15176) (FAA)

TAKEOFF OBSTACLE NOTES:

- Rwy 18**, fence and trees beginning abeam DER, 362' left of centerline, up to 5' AGL/447' MSL.
Sign, vehicles on road, and trees beginning 254' from DER, 453' left of centerline, up to 49' AGL/478' MSL.
Rwy 36, trees beginning 45' from DER, 389' right of centerline, up to 29' AGL/452' MSL.
Pole 814' from DER, 288' right of centerline, 27' AGL/467' MSL.
Building, pole, and trees beginning 53' from DER, 497' left of centerline, up to 41' AGL/483' MSL.

MIDLOTHIAN/WAXAHACHIE, TX

MID-WAY RGNL (JWY)

TAKEOFF MINIMUMS AND (OBSTACLE) DEPARTURE PROCEDURES

AMDT 2 18SEP14 (14261) (FAA)

DEPARTURE PROCEDURE:

- Rwy 18**, climb heading 178° to 1700 before proceeding northbound.
Rwy 36, climb heading 013° to 2700 before turning left.

TAKEOFF OBSTACLE NOTES:

- Rwy 18**, vehicles on road, catenaries, and poles beginning 159' from DER, 465' right of centerline, up to 39' AGL/712' MSL.
Trees beginning 956' from DER, 594' left of centerline, up to 71' AGL/722' MSL.
Rwy 36, trees beginning 6' from DER, 334' left of centerline, up to 34' AGL/753' MSL.
Trees beginning 82' from DER, 251' right of centerline, up to 40' AGL/759' MSL.
Catenaries and trees beginning 1067' from DER, 629' left of centerline, up to 37' AGL/765' MSL.

MINEOLA/QUITMAN, TX

WOOD COUNTY - COLLINS FLD (JDD)

TAKEOFF MINIMUMS AND (OBSTACLE) DEPARTURE PROCEDURES

AMDT 1A 21MAY20 (22027) (FAA)

TAKEOFF MINIMUMS:

- Rwy 18**, 300-2 or std. w/min. climb gradient of 270' per NM to 700.

TAKEOFF OBSTACLE NOTES:

- Rwy 36**, trees beginning 50' from DER, 158' left of centerline, up to 438' MSL.
Trees beginning 83' from DER, 393' right of centerline, up to 61' AGL/460' MSL.
Tree 367' from DER, 500' left of centerline, 441' MSL.
Trees beginning 415' from DER, 448' right of centerline, up to 465' MSL.
Trees beginning 480' from DER, 551' left of centerline, up to 447' MSL.
Trees beginning 654' from DER, 375' left of centerline, up to 464' MSL.
Trees beginning 878' from DER, 573' right of centerline, up to 475' MSL.
Trees beginning 1090' from DER, 19' right of centerline, up to 482' MSL.
Tree 1656' from DER, 150' left of centerline, 470' MSL.
Trees beginning 1683' from DER, 68' left of centerline, up to 471' MSL.
Trees beginning 2074' from DER, 91' left of centerline, up to 472' MSL.
Trees beginning 2149' from DER, 17' right of centerline, up to 79' AGL/484' MSL.
Trees beginning 2304' from DER, 34' left of centerline, up to 473' MSL.
Tree 3512' from DER, 1145' left of centerline, 492' MSL.
Tree 3631' from DER, 992' left of centerline, 495' MSL.
Rwy 18, trees beginning 48' from DER, 252' left of centerline, up to 482' MSL.
Trees beginning 49' from DER, 285' right of centerline, up to 507' MSL.
Tree 127' from DER, 344' left of centerline, 491' MSL.
Trees beginning 136' from DER, 440' right of centerline, up to 68' AGL/512' MSL.
Tree 189' from DER, 265' left of centerline, 500' MSL.
Tree, terrain, vehicles on road, pole beginning 199' from DER, 64' left of centerline, up to 69' AGL/509' MSL.
Trees beginning 269' from DER, 283' right of centerline, up to 73' AGL/518' MSL.
Tree, terrain, vehicles on road beginning 278' from DER, 12' right of centerline, up to 79' AGL/519' MSL.
Tree, terrain beginning 727' from DER, 82' left of centerline, up to 524' MSL.
Tree, terrain beginning 906' from DER, 61' left of centerline, up to 528' MSL.
Tree, terrain beginning 1006' from DER, 61' left of centerline, up to 530' MSL.
Tree, terrain beginning 1242' from DER, 136' left of centerline, up to 533' MSL.
Tree, terrain beginning 1385' from DER, 361' left of centerline, up to 538' MSL.
Trees beginning 1474' from DER, 599' left of centerline, up to 539' MSL.
Tree, vehicles on road beginning 1584' from DER, 49' left of centerline, up to 543' MSL.
Trees beginning 2134' from DER, 224' right of centerline, up to 529' MSL.
Trees beginning 2166' from DER, 50' right of centerline, up to 541' MSL.
Trees beginning 2619' from DER, 559' right of centerline, up to 561' MSL.
Trees beginning 2717' from DER, 330' right of centerline, up to 571' MSL.
Trees beginning 2891' from DER, 320' right of centerline, up to 574' MSL.
Trees beginning 3136' from DER, 34' right of centerline, up to 580' MSL.
Trees beginning 3819' from DER, 34' right of centerline, up to 584' MSL.
Tree 4116' from DER, 1067' left of centerline, 546' MSL.
Trees beginning 4137' from DER, 785' left of centerline, up to 549' MSL.
Tree 4436' from DER, 339' left of centerline, 554' MSL.

CON'T

TAKEOFF MINIMUMS, (OBSTACLE) DEPARTURE PROCEDURES, AND DIVERSE VECTOR AREA (RADAR VECTORS)

22223



TAKEOFF MINIMUMS, (OBSTACLE) DEPARTURE PROCEDURES, AND DIVERSE VECTOR AREA (RADAR VECTORS)



22223

MINEOLA/QUITMAN, TX (CON'T)

WOOD COUNTY - COLLINS FLD (JDD) (CON'T)

Rwy 18 (CON'T), tree 4475' from DER, 243' left of centerline, 555' MSL.
Antenna, tree beginning 4534' from DER, 410' left of centerline, up to 64' AGL/558' MSL.
Trees beginning 4559' from DER, 116' left of centerline, up to 567' MSL.
Trees beginning 4573' from DER, 37' right of centerline, up to 585' MSL.
Trees beginning 4643' from DER, 60' left of centerline, up to 568' MSL.
Vegetation, tree beginning 4799' from DER, 328' left of centerline, up to 100' AGL/576' MSL.
Tree 4880' from DER, 863' left of centerline, 584' MSL.
Tree 4929' from DER, 1291' left of centerline, 590' MSL.
Tree 4980' from DER, 1064' left of centerline, 591' MSL.
Tree, vegetation beginning 4997' from DER, 509' left of centerline, up to 592' MSL.
Trees beginning 5107' from DER, 384' left of centerline, up to 92' AGL/597' MSL.
Vegetation, tree beginning 5243' from DER, 289' right of centerline, up to 100' AGL/599' MSL.
Vegetation 1 NM from DER, 2038' right of centerline, 100' AGL/602' MSL.
Vegetation beginning 1.1 NM from DER, 2026' right of centerline, up to 100' AGL/606' MSL.
Vegetation 1.1 NM from DER, 2270' right of centerline, 100' AGL/612' MSL.
Vegetation 1.2 NM from DER, 2259' right of centerline, 100' AGL/619' MSL.

MINERAL WELLS, TX

MINERAL WELLS RGNL (MWL)

TAKEOFF MINIMUMS AND (OBSTACLE) DEPARTURE PROCEDURES

AMDT 2A 26MAR20 (20086) (FAA)

TAKEOFF MINIMUMS:

Rwy 31, 500-3 or std. w/min. climb of 265' per NM to 1600.

DEPARTURE PROCEDURE:

Rwy 31, climb on heading 305° to 2000 before turning right..

TAKEOFF OBSTACLE NOTES:

Rwy 13, terrain 73' from DER, 214' right of centerline, 975' MSL.
Trees beginning 91' from DER, 200' left of centerline, up to 980' MSL.
Tree 362' from DER, 222' right of centerline, 985' MSL.
Tree 366' from DER, 252' right of centerline, 986' MSL.
Rwy 17, tree 502' from DER, 279' right of centerline, 100' AGL/1059' MSL.
Tree 525' from DER, 618' left of centerline, 100' AGL/1069' MSL.
Tree 1687' from DER, 804' left of centerline, 100' AGL/1089' MSL.
Rwy 31, tree 187' from DER, 485' left of centerline, 932' MSL.
Trees beginning 284' from DER, 130' left of centerline, up to 960' MSL.
Trees beginning 337' from DER, 46' right of centerline, up to 946' MSL.
Trees beginning 930' from DER, 49' left of centerline, up to 964' MSL.
Tower 2.4 NM from DER, 2602' left of centerline, 277' AGL/1349' MSL.
Tower 2.5 NM from DER, 1673' left of centerline, 307' AGL/1377' MSL.
Rwy 35, tree 575' from DER, 21' right of centerline, 30' AGL/946' MSL.
Tree 582' from DER, 614' left of centerline, 31' AGL/940' MSL.
Tree 908' from DER, 696' right of centerline, 100' AGL/1019' MSL.
Tree 1251' from DER, 93' left of centerline, 100' AGL/1009' MSL.
Tree 1407' from DER, 391' right of centerline, 100' AGL/1009' MSL.

MOUNT PLEASANT, TX

MOUNT PLEASANT RGNL (OSA)

TAKEOFF MINIMUMS AND (OBSTACLE) DEPARTURE PROCEDURES

ORIG 15JAN09 (09015) (FAA)

TAKEOFF MINIMUMS:

Rwy 35, 300-1¼ or std. w/ min. climb of 309' per NM to 700, or alternatively, with standard takeoff minimums and a normal 200' per NM climb gradient, takeoff must occur no later than 1,600' prior to DER.

TAKEOFF OBSTACLE NOTES:

Rwy 17, trees 1231' from DER, 679' right of centerline, 100' AGL/399' MSL.
Rwy 35, tower 1.04 NM from DER, 1261' right of centerline, 180' AGL/539' MSL.
Trees 695' from DER, 614' left of centerline, 100' AGL/469' MSL.

MOUNT VERNON, TX

FRANKLIN COUNTY (F53)

TAKEOFF MINIMUMS AND (OBSTACLE) DEPARTURE PROCEDURES

AMDT 1 13JAN11 (11013) (FAA)

TAKEOFF MINIMUMS:

Rwy 13, 400-2½ or std. w/ min. climb of 238' per NM to 900.

TAKEOFF OBSTACLE NOTES:

Rwy 13, trees beginning 1598' from DER, 84' left of centerline, up to 100' AGL/529' MSL.
Tower and trees beginning 2889' from DER, 1022' right of centerline, up to 280' AGL/780' MSL.
Rwy 31, trees beginning 446' from DER, 175' left of centerline, up to 100' AGL/479' MSL.
Tower and trees beginning 3439' from DER, 452' right of centerline, up to 113' AGL/500' MSL.



TAKEOFF MINIMUMS, (OBSTACLE) DEPARTURE PROCEDURES, AND DIVERSE VECTOR AREA (RADAR VECTORS)



22223

SC-2


TAKEOFF MINIMUMS, (OBSTACLE) DEPARTURE PROCEDURES, AND


DIVERSE VECTOR AREA (RADAR VECTORS)

22223

OLNEY, TX**OLNEY MUNI (ONY)****TAKEOFF MINIMUMS AND (OBSTACLE) DEPARTURE PROCEDURES**

ORIG 10JAN13 (13010) (FAA)

TAKEOFF OBSTACLE NOTES:**Rwy 4**, trees beginning 923' from DER, 721' right of centerline, up to 34' AGL/1303' MSL.**Rwy 13**, vehicles on road beginning 700' from DER, left and right of centerline, up to 15' AGL/1264' MSL.

Trees beginning 745' from DER, 428' left of centerline, up to 55' AGL/1304' MSL.

Rwy 22, vehicles on road beginning 272' from DER, 556' right of centerline, up to 15' AGL/1284' MSL.

Trees beginning 930' from DER, left and right of centerline, up to 55' AGL/1324' MSL.

Rwy 31, vehicles on road beginning 845' from DER, left and right of centerline, up to 15' AGL/1294' MSL.**Rwy 35**, trees beginning 502' from DER, 428' right of centerline, up to 22' AGL/1293' MSL.

Trees beginning 517' from DER, 22' left of centerline, 30' AGL/1299' MSL.

PADUCAH, TX**DAN E RICHARDS MUNI (3F6)****TAKEOFF MINIMUMS AND (OBSTACLE) DEPARTURE PROCEDURES**

AMDT 1 20JUN19 (19171) (FAA)

TAKEOFF MINIMUMS:**Rwy 36**, 300-2 or std. w/min. climb of 240' per NM to 2400.**DEPARTURE PROCEDURE:****Rwy 36**, climb heading 355° to 2400 before turning left.**TAKEOFF OBSTACLE NOTES:****Rwy 18**, fence abeam DER, 93' right of centerline, 5' AGL/1855' MSL.

Power lines beginning abeam DER, 360' left of centerline southbound parallel to departure course, up to 37' AGL/1886' MSL.

Vehicle on road 30' from DER, 369' left of centerline, 15' AGL/1864' MSL.

Tree 2823' from DER, 1104' right of centerline, 100' AGL/1929' MSL.

Rwy 36, fence abeam DER, 100' left of centerline, 4' AGL/1863' MSL.

Power lines beginning abeam DER, 360' right of centerline northbound parallel to departure course, up to 37' AGL/1886' MSL.

Tree 1480' from DER, 804' left of centerline, 100' AGL/1969' MSL.

PAMPA, TX**PERRY LEFORS FLD (PPA)****TAKEOFF MINIMUMS AND (OBSTACLE) DEPARTURE PROCEDURES**

ORIG 10JAN13 (21252) (FAA)

TAKEOFF OBSTACLE NOTES:**Rwy 35**, pole 771' from DER, 409' left of centerline, 33' AGL/3272' MSL.**PANHANDLE, TX****PANHANDLE-CARSON COUNTY (T45)****TAKEOFF MINIMUMS AND (OBSTACLE) DEPARTURE PROCEDURES**

ORIG 30JUN11 (11181) (FAA)

TAKEOFF OBSTACLE NOTES:**Rwy 35**, vehicle on road 95' from DER, 270' right of centerline, up to 15' AGL/3464' MSL.

Vehicle on road 218' from DER, up to 10' AGL/3466' MSL.

Rwy 17, vehicle on road 77' from DER, 228' right of centerline, up to 15' AGL/3469' MSL.

Vehicle on road 279' from DER, 277' left of centerline, up to 15' AGL/3464' MSL.

Electric pole 512' from DER 253' left of centerline, up to 55' AGL/ 3509' MSL.

House 650' from DER, 133' left of centerline, up to 20' AGL/3469' MSL.

PARIS, TX**COX FLD (PRX)****TAKEOFF MINIMUMS AND (OBSTACLE) DEPARTURE PROCEDURES**

ORIG 23NOV06 (21140) (FAA)

TAKEOFF OBSTACLE NOTES:**Rwy 17**, multiple trees beginning 88' from DER, 299' right of centerline, up to 50' AGL/558' MSL.**Rwy 35**, bushes and pole beginning 406' from DER, 402' left of centerline up to 35' AGL/573' MSL.

Multiple trees beginning 161' from DER, 81' right of centerline, up to 50' AGL/578' MSL.

Rwy 32, multiple trees beginning 716' from DER, 488' right of centerline, up to 50' AGL/568' MSL.

11 AUG 2022 to 08 SEP 2022

11 AUG 2022 to 08 SEP 2022


TAKEOFF MINIMUMS, (OBSTACLE) DEPARTURE PROCEDURES, AND


DIVERSE VECTOR AREA (RADAR VECTORS)

22223



TAKEOFF MINIMUMS, (OBSTACLE) DEPARTURE PROCEDURES, AND DIVERSE VECTOR AREA (RADAR VECTORS)



22223

PERRYTON, TX

PERRYTON OCHILTREE COUNTY (PYX)

TAKEOFF MINIMUMS AND (OBSTACLE) DEPARTURE PROCEDURES

AMDT 1 05JAN17 (17005) (FAA)

TAKEOFF MINIMUMS:

Rwys 4, 22, NA-Environmental.

DEPARTURE PROCEDURE:

Rwy 17, climb heading 173° to 3500 before turning right.

TAKEOFF OBSTACLE NOTES:

Rwy 17, vehicles on road 525' from DER, crossing extended runway centerline, 2929' MSL.

Poles and power line beginning 554' from DER, 391' left of centerline, 26' AGL/2941' MSL.

Poles and power line beginning 559' from DER, 389' right of centerline, 24' AGL/2940' MSL.

Rwy 35, pole 14' from DER, 185' left of centerline, 13' AGL/2928' MSL.

Poles and power line beginning 715' from DER, 359' left of centerline, up to 33' AGL/2946' MSL.

PLAINS, TX

YOAKUM COUNTY (F98)

TAKEOFF MINIMUMS AND (OBSTACLE) DEPARTURE PROCEDURES

ORIG 25SEP08 (08269) (FAA)

TAKEOFF OBSTACLE NOTES:

Rwy 3, tree 948' from DER, 725' left of centerline, 50' AGL/3769' MSL.

Rwy 17, vehicle on road 99' from DER, 476' right of centerline, 15' AGL/3699' MSL.

Rwy 35, vehicle on road 546' from DER, 527' left of centerline, 15' AGL/3714' MSL.

PLAINVIEW, TX

HALE COUNTY (PVW)

TAKEOFF MINIMUMS AND (OBSTACLE) DEPARTURE PROCEDURES

ORIG 05APR12 (12096) (FAA)

TAKEOFF MINIMUMS:

Rwy 4, 300-1½ or std. w/min. climb of 420' per NM to 3700.

TAKEOFF OBSTACLE NOTES:

Rwy 4, fuel pump 137' from DER, 368' right of centerline, 5' AGL/3371' MSL.

Building 261' from DER, 444' right of centerline, 33' AGL/3394' MSL.

Pole 264' from DER, 394' right of centerline, 27' AGL/3388' MSL.

Trees beginning 2817' from DER, 1064' right of centerline, up to 100' AGL/3454' MSL.

Tower 4696' from DER, 1750' left of centerline, 209' AGL/3558' MSL.

Multiple elevators beginning 6190' from DER, 339' left of centerline, up to 200' AGL/3555' MSL.

Rwy 13, trees beginning 1218' from DER, 530' right of centerline, up to 100' AGL/3469' MSL.

Trees beginning 2137' from DER, 479' left of centerline, up to 100' AGL/3469' MSL.

Rwy 22, multiple trees, poles and antennas beginning 1121' from DER, 311' left of centerline, up to 100' AGL/3474' MSL.

Rwy 31, pole 1186' from DER, 204' right of centerline, 35' AGL/3405' MSL.

Trees beginning 4035' from DER, 841' left of centerline, up to 100' AGL/3479' MSL.

Trees beginning 4144' from DER, 1318' right of centerline, up to 100' AGL/3479' MSL.

ROCKWALL, TX

RALPH M HALL/ROCKWALL MUNI (F46)

TAKEOFF MINIMUMS AND (OBSTACLE) DEPARTURE PROCEDURES

AMDT 1 18SEP14 (14261) (FAA)

TAKEOFF OBSTACLE NOTES:

Rwy 17, vehicles on road beginning 19' from DER, on centerline and left and right of centerline, up to 15' AGL/584' MSL.

Trees beginning 128' from DER, 354' left of centerline, up to 30' AGL/599' MSL.

Trees beginning 135' from DER, 205' right of centerline, up to 30' AGL/589' MSL.

Trees beginning 810' from DER, on centerline and left and right of centerline, up to 100' AGL/679' MSL.

Rwy 35, transmission line and transmission towers beginning 362' from DER, on centerline and left and right of centerline, up to 91' AGL/607' MSL.

11 AUG 2022 to 08 SEP 2022

11 AUG 2022 to 08 SEP 2022



TAKEOFF MINIMUMS, (OBSTACLE) DEPARTURE PROCEDURES, AND DIVERSE VECTOR AREA (RADAR VECTORS)



22223

TAKEOFF MINIMUMS, (OBSTACLE) DEPARTURE PROCEDURES, AND DIVERSE VECTOR AREA (RADAR VECTORS)

22223

SEMINOLE, TX

GAINES COUNTY (GNC)

TAKEOFF MINIMUMS AND (OBSTACLE) DEPARTURE PROCEDURES

ORIG 29JUL10 (10210) (FAA)

TAKEOFF MINIMUMS:

Rwy 35, std. w/ min. climb of 612' per NM to 3600 or 300-1 w/ min. climb of 235' per NM to 3900, or 900-3 for climb in visual conditions.

DEPARTURE PROCEDURE:

Rwy 35, climb heading 350° to 4000 before turning right. For climb in visual conditions cross Gaines County airport at or above 4100 before proceeding on course.

TAKEOFF OBSTACLE NOTES:

Rwy 17, brush beginning 147' from DER 388' right of centerline, 30' AGL/3280' MSL.

Tree 231' from DER, 356' right of centerline, 60' AGL/3293' MSL.

House 865' from DER, 531' left of centerline, 25' AGL/3289' MSL.

Pole 1238' from DER, 650' right of centerline, 30' AGL/3297' MSL.

Rwy 35, tower 2898' from DER, 1016' left of centerline, 169' AGL/3440' MSL.

SEYMOUR, TX

SEYMOUR MUNI (60F)

TAKEOFF MINIMUMS AND (OBSTACLE) DEPARTURE PROCEDURES

ORIG 09FEB12 (12040) (FAA)

TAKEOFF OBSTACLE NOTES:

Rwy 17, vehicles on roadway beginning 27' from DER, left and right of centerline, up to 17' AGL/1356' MSL.

Aircraft on taxiway 36' from DER, 175' left of centerline, up to 25' AGL/1364' MSL.

Buildings beginning 73' from DER, 251' left of centerline, up to 40' AGL/1379' MSL.

Trees beginning 710' from DER, 225' left of centerline, up to 100' AGL/1459' MSL.

Rwy 35, vehicles on roadway beginning 35' from DER, 202' left of centerline, up to 17' AGL/1356' MSL.

Trees beginning 421' from DER, 7' right of centerline, up to 100' AGL/1439' MSL.

SHEPPARD AFB/WICHITA FALLS MUNI (KSPS)

WICHITA FALLS, TX

TAKEOFF MINIMUMS AND (OBSTACLE) DEPARTURE PROCEDURES

AMDT 2 02DEC21 (21336) (USAF)

DEPARTURE PROCEDURE:

Rwys 15L/C/R, climb on hdg 153° to 2500' before turning westbound.

Rwy 18, climb hdg 160° to 2500', intercept SPS VORTAC R-120 outbound. Cross SPS R-120/8 DME (HUNEP) at or below 2500', then climb and maintain 5000' or higher as assigned. Turn on course after reaching 3100'.

Rwy 36, climb hdg 355° to 1500' then proceed on course.

TAKEOFF OBSTACLE NOTES:

Rwy 18, light pole 837' from DER, 726' left of centerline, 31' AGL/1040' MSL.

Rwy 36, large frame aircraft parking 337' from DER, 542' left of centerline, 56' AGL/1053' MSL.

Large frame aircraft parking 451' from DER, 573' left of centerline, 56' AGL/1053' MSL.

SHERMAN, TX

SHERMAN MUNI (SWI)

TAKEOFF MINIMUMS AND (OBSTACLE) DEPARTURE PROCEDURES

AMDT 1 22AUG13 (13234) (FAA)

TAKEOFF MINIMUMS:

Rwy 34, 300-1½ or std. w/min. climb of 267' per NM to 1100.

DEPARTURE PROCEDURE:

Rwy 34, climb heading 343° to 1500 before turning right.

TAKEOFF OBSTACLE NOTES:

Rwy 16, trees beginning 8' from DER, 237' right of centerline up to 55' AGL/755' MSL.

Sign 19' from DER, 133' left of centerline, 1' AGL/713' MSL.

Trees beginning 25' from DER, 314' left of centerline, up to 69' AGL/775' MSL.

Pole 332' from DER, 522' right of centerline, 30' AGL/740' MSL.

Poles beginning 406' from DER, 574' left of centerline up to 37' AGL/747' MSL.

Transmission tower lighted 695' from DER, 242' left of centerline, 23' AGL/733' MSL.

Rwy 34, fence beginning 50' from DER, 38' right of centerline, up to 13' AGL/753' MSL.

Trees beginning 80' from DER, 3' left of centerline, up to 72' AGL/822' MSL.

Oil rig 140' from DER, 300' right of centerline, 31' AGL/771' MSL.

Trees beginning 252' from DER, 15' right of centerline, up to 79' AGL/839' MSL.

Poles beginning 419' from DER, 250' right of centerline, up to 44' AGL/802' MSL.

Light support structure 1074' from DER, 271' right of centerline, 40' AGL/784' MSL.

Building 1499' from DER, 847' right of centerline, 35' AGL/795' MSL.

Tower 1.2 NM from DER, 1026' left of centerline, 164' AGL/938' MSL.

11 AUG 2022 to 08 SEP 2022

11 AUG 2022 to 08 SEP 2022

TAKEOFF MINIMUMS, (OBSTACLE) DEPARTURE PROCEDURES, AND DIVERSE VECTOR AREA (RADAR VECTORS)

22223

SC-2



TAKEOFF MINIMUMS, (OBSTACLE) DEPARTURE PROCEDURES, AND DIVERSE VECTOR AREA (RADAR VECTORS)



22223

SHERMAN-DENISON, TX

NORTH TEXAS RGNL/PERRIN FLD (GYI)

TAKEOFF MINIMUMS AND (OBSTACLE) DEPARTURE PROCEDURES

AMDT 1 15AUG19 (21112) (FAA)

TAKEOFF MINIMUMS:

Rwy 13, 300-1% or std. w/min. climb of 305' per NM to 1000.

Rwy 17L, 300-1% or std. w/min. climb of 280' per NM to 1000.

DEPARTURE PROCEDURE:

Rwy 17L, climb heading 176° to 1800 before turning right.

Rwy 17R, climb heading 176° to 1500 before turning right.

TAKEOFF OBSTACLE NOTES:

Rwy 13, trees beginning 3257' from DER, 658' right of centerline, up to 100' AGL/859' MSL.

Antenna 3391' from DER, 1277' left of centerline, 57' AGL/837' MSL.

Tree 3655' from DER, 195' left of centerline, 100' AGL/869' MSL.

Tree 4468' from DER, 1653' left of centerline, 100' AGL/909' MSL.

Trees beginning 4670' from DER, 485' left of centerline, up to 100' AGL/919' MSL.

Tree 4712' from DER, 1125' right of centerline, 100' AGL/869' MSL.

Tree 5479' from DER, 1170' right of centerline, 100' AGL/879' MSL.

Trees beginning 5847' from DER, 619' left of centerline, up to 100' AGL/949' MSL.

Tree 1.3 NM from DER, 2555' left of centerline, 100' AGL/959' MSL.

Rwy 17L, pole 1088' from DER, 739' left of centerline, 38' AGL/779' MSL.

Rig 3711' from DER, 821' left of centerline, 96' AGL/861' MSL.

Tree 5188' from DER, 1821' right of centerline, 100' AGL/929' MSL.

Tree 1.3 NM from DER, 2492' right of centerline, 100' AGL/969' MSL.

Trees beginning 1566' from DER, 457' left of centerline, 55' AGL/859' MSL.

Rwy 31, bldg 1164' from DER, 248' right of centerline, 30' AGL/759' MSL.

Tree 1584' from DER, 880' right of centerline, 100' AGL/829' MSL.

Trees beginning 1852' from DER, 606' left of centerline, up to 100' AGL/819' MSL.

Rwy 35L, tree 661' from DER, 560' left of centerline, 100' AGL/819' MSL.

Rwy 35R, planes on twy 77' from DER, 236' right of centerline, 25' AGL/789' MSL.

SLATON, TX

CITY OF SLATON/LARRY T NEAL MEML (F49)

TAKEOFF MINIMUMS AND (OBSTACLE) DEPARTURE PROCEDURES

ORIG 05JAN17 (20366) (FAA)

TAKEOFF MINIMUMS:

Rwy 18, 400-2 or std. w/min. climb of 263' per NM to 3600.

TAKEOFF OBSTACLE NOTES:

Rwy 18, equip 85' from DER, 369' left of centerline, 3115' MSL.

Trees beginning 278' from DER, 269' right of centerline, up to 39' AGL/3145' MSL.

Tower 1.7 NM from DER, 698' right of centerline, 348' AGL/3457' MSL.

Rwy 36, tree 124' from DER, 518' left of centerline, 9' AGL/3127' MSL.

Tree 711' from DER, 592' left of centerline, 3142' MSL.

Poles beginning 712' from DER, 261' left of centerline, up to 3146' MSL.

Tree 831' from DER, 642' left of centerline, 46' AGL/3156' MSL.

Trees beginning 858' from DER, 642' left of centerline, up to 48' AGL/3158' MSL.

SNYDER, TX

WINSTON FLD (SNK)

TAKEOFF MINIMUMS AND (OBSTACLE) DEPARTURE PROCEDURES

ORIG 10JUL03 (21252) (FAA)

DEPARTURE PROCEDURE:

Rwy 26, climb via heading 263° to 3000 prior to turning northbound.

SPEARMAN, TX

MAJOR SAMUEL B CORNELIUS FLD (E42)

TAKEOFF MINIMUMS AND (OBSTACLE) DEPARTURE PROCEDURES

ORIG 15JAN09 (22139) (FAA)

TAKEOFF MINIMUMS:

Rwy 20, 300-1% or std. w/min. climb of 286' per NM to 3500.

TAKEOFF OBSTACLE NOTES:

Rwy 20, vehicle on road 174' from DER, 496' right of centerline, 15' AGL/3094' MSL.

Tower 4330' from DER, 575' left of centerline, 100' AGL/3228' MSL.

Tower 1.26 NM from DER, 2533' left of centerline, 250' AGL/3355' MSL.

11 AUG 2022 to 08 SEP 2022

11 AUG 2022 to 08 SEP 2022



TAKEOFF MINIMUMS, (OBSTACLE) DEPARTURE PROCEDURES, AND DIVERSE VECTOR AREA (RADAR VECTORS)



22223

SC-2



TAKEOFF MINIMUMS, (OBSTACLE) DEPARTURE PROCEDURES, AND DIVERSE VECTOR AREA (RADAR VECTORS)



22223

STAMFORD, TX

ARLEDGE FLD (F56)

TAKEOFF MINIMUMS AND (OBSTACLE) DEPARTURE PROCEDURES

ORIG 11FEB10 (21308) (FAA)

TAKEOFF MINIMUMS:

Rwys 8, 13, 26, 31, NA-Environmental.

TAKEOFF OBSTACLE NOTES:

Rwy 17, trees beginning 772' from DER, 532' left of centerline, up to 100' AGL/1659' MSL.

Tree 2215' from DER, 966' right of centerline, up to 100' AGL/1659' MSL.

Rwy 35, tree 3284' from DER, 901' left of centerline, up to 100' AGL/1669' MSL.

Trees beginning 1267' from DER, 712' right of centerline, up to 100' AGL/1664' MSL.

STEPHENVILLE, TX

STEPHENVILLE CLARK RGNL (SEP)

TAKEOFF MINIMUMS AND (OBSTACLE) DEPARTURE PROCEDURES

ORIG-A 20JUN19 (19171) (FAA)

TAKEOFF OBSTACLE NOTES:

Rwy 14, trees, vehicles on road beginning 199' from DER, 32' right of centerline, up to 1327' MSL.

Trees beginning 220' from DER, 207' right of centerline, up to 1340' MSL.

Tree 296' from DER, 254' left of centerline, 1317' MSL.

Tree 339' from DER, 435' left of centerline, 1323' MSL.

Trees beginning 501' from DER, 366' left of centerline, up to 1326' MSL.

Rwy 32, tree 128' from DER, 446' right of centerline, 1364' MSL.

Pole 230' from DER, 387' left of centerline, 26' AGL/1337' MSL.

Trees, pole beginning 242' from DER, 244' right of centerline, up to 1369' MSL.

Tree, pole beginning 258' from DER, 400' left of centerline, up to 1342' MSL.

Trees, pole beginning 746' from DER, 3' right of centerline, up to 1370' MSL.

Tree 859' from DER, 31' left of centerline, 1349' MSL.

Tree 871' from DER, 140' left of centerline, 1353' MSL.

Tree 1053' from DER, 250' left of centerline, 1355' MSL.

STRATFORD, TX

STRATFORD FIELD (H70)

TAKEOFF MINIMUMS AND (OBSTACLE)

DEPARTURE PROCEDURES

AMDT 4A 21JUN18 (18172) (FAA)

TAKEOFF MINIMUMS:

Rwy 22, 400-2 or std. w/min. climb of 350' per NM to 4200.

SULPHUR SPRINGS, TX

SULPHUR SPRINGS MUNI (SLR)

TAKEOFF MINIMUMS AND (OBSTACLE) DEPARTURE PROCEDURES

AMDT 1 25AUG11 (11237) (FAA)

TAKEOFF OBSTACLE NOTES:

Rwy 1, tree 1' from DER, 140' left of centerline, 27' AGL/484' MSL.

Tree 108' from DER, 265' right of centerline, 13' AGL/470' MSL.

Rwy 19, trees beginning 82' from DER, 265' right of centerline, up to 100' AGL/609' MSL.

Trees beginning 119' from DER, 454' left of centerline, up to 53' AGL/552' MSL.

Vehicle on road 492' from DER, 2' left of centerline, 17' AGL/518' MSL.

Poles beginning 1155' from DER, 143' left of centerline, up to 40' AGL/536' MSL.

Poles beginning 1521' from DER, 158' right of centerline, up to 53' AGL/552' MSL.

Tank 1835' from DER, 14' right of centerline, 55' AGL/553' MSL.

Chimney 1862' from DER, 172' right of centerline, 48' AGL/544' MSL.

Chimneys beginning 1887' from DER, 106' left of centerline, up to 44' AGL/543' MSL.

SWEETWATER, TX

AVENGER FLD (SWW)

TAKEOFF MINIMUMS AND (OBSTACLE) DEPARTURE PROCEDURES

ORIG 20OCT11 (21336) (FAA)

TAKEOFF OBSTACLE NOTES:

Rwy 4, multiple trees, poles and vehicles on road beginning 19' from DER, 7' left of centerline, up to 79' AGL/2370' MSL.

Multiple trees, poles and vehicles on road beginning 39' from DER, 5' right of centerline, up to 60' AGL/2353' MSL.

Rwy 17, sign 12' from DER, 250' right of centerline, 2' AGL/2375' MSL.

Light 49' from DER, 90' right of centerline, 3' AGL/2372' MSL.

Multiple vehicles on road beginning 750' from DER, 8' right of centerline, up to 15' AGL/2390' MSL.

Multiple poles and vehicles on road beginning 755' from DER, 1' left of centerline, up to 54' AGL/2407' MSL.

Telephone line 943' from DER, 278' left of centerline, 48' AGL/2401' MSL.

Rwy 22, terrain 49' from DER, 219' right of centerline, 2383' MSL.

Multiple trees, poles, and buildings beginning 298' from DER, 261' right of centerline, up to 61' AGL/2420' MSL.

CON'T



TAKEOFF MINIMUMS, (OBSTACLE) DEPARTURE PROCEDURES, AND DIVERSE VECTOR AREA (RADAR VECTORS)



22223

SC-2

TAKEOFF MINIMUMS, (OBSTACLE) DEPARTURE PROCEDURES, AND DIVERSE VECTOR AREA (RADAR VECTORS)

22223

SWEETWATER, TX (CON'T)

AVENGER FLD (SWW) (CON'T)

Rwy 35, multiple trees beginning 14' from DER, 361' left of centerline, up to 27' AGL/2367' MSL.
Light 49' from DER, 90' left of centerline, 2' AGL/2342' MSL.
Light 50' from DER, 90' right of centerline, 2' AGL/2342' MSL.
Multiple trees beginning 70' from DER, 187' right of centerline, up to 60' AGL/2355' MSL.

TERRELL, TX

TERRELL MUNI (TRL)

TAKEOFF MINIMUMS AND (OBSTACLE) DEPARTURE PROCEDURES

AMDT 1A 24MAR22 (22083) (FAA)

TAKEOFF OBSTACLE NOTES:

Rwy 18, tree 1087' from DER, 511' right of centerline, 486' MSL.
Tree 1220' from DER, 399' right of centerline, 488' MSL.
Tree 1552' from DER, 200' right of centerline, 498' MSL.
Rwy 36, fence 206' from DER, 349' right of centerline, 8' AGL/481' MSL.
Pole 215' from DER, 401' right of centerline, 16' AGL/488' MSL.
Pole 250' from DER, 408' right of centerline, 25' AGL/496' MSL.
Pole 295' from DER, 524' right of centerline, 504' MSL.
Poles beginning 295' from DER, 298' right of centerline, up to 34' AGL/504' MSL.
Trees beginning 636' from DER, 319' right of centerline, up to 519' MSL.
Trees, poles and lite beginning 770' from DER, 110' left of centerline, up to 510' MSL.
Trees and poles beginning 1186' from DER, 336' left of centerline, up to 522' MSL.

TYLER, TX

TYLER POUNDS RGNL (TYR)

TAKEOFF MINIMUMS AND (OBSTACLE) DEPARTURE PROCEDURES

AMDT 3A 25FEB21 (21056) (FAA)

TAKEOFF OBSTACLE NOTES:

Rwy 4, tree 485' from DER, 602' left of centerline, 549' MSL.
Trees beginning 630' from DER, 305' right of centerline, up to 578' MSL.
Tree 868' from DER, 568' left of centerline, 560' MSL.
Rwy 13, vegetation 12' from DER, 290' right of centerline, 547' MSL.
Tree 172' from DER, 413' right of centerline, 557' MSL.
Tree 519' from DER, 598' right of centerline, 581' MSL.
Trees beginning 642' from DER, 514' left of centerline, up to 608' MSL.
Rwy 18, tree 150' from DER, 321' right of centerline, 565' MSL.
Trees beginning 384' from DER, 139' right of centerline, up to 588' MSL.
Tree, pole beginning 970' from DER, 337' left of centerline, up to 586' MSL.
Rwy 22, vehicles on road, fence beginning 55' from DER, 429' right of centerline, up to 556' MSL.
Pole beginning 497' from DER, 521' right of centerline, up to 30' AGL/572' MSL.
Pole 1146' from DER, 805' right of centerline, 35' AGL/576' MSL.
Tree 1208' from DER, 795' right of centerline, 578' MSL.
Tree 1360' from DER, 700' left of centerline, 591' MSL.
Tree 1664' from DER, 803' left of centerline, 593' MSL.
Building 1812' from DER, 810' right of centerline, 60' AGL/598' MSL.
Rwy 31, tree 504' from DER, 533' right of centerline, 542' MSL.
Trees beginning 542' from DER, 573' right of centerline, up to 555' MSL.
Tree 908' from DER, 689' left of centerline, 548' MSL.
Tree 1341' from DER, 856' right of centerline, 567' MSL.
Trees beginning 1384' from DER, 666' left of centerline, up to 556' MSL.
Trees beginning 1504' from DER, 754' right of centerline, up to 568' MSL.
Rwy 36, building 759' from DER, 561' right of centerline, 25' AGL/540' MSL.
Tree 1103' from DER, 26' right of centerline, 555' MSL.
Tree 1131' from DER, 1' left of centerline, 51' AGL/546' MSL.
Trees beginning 1178' from DER, 350' right of centerline, up to 567' MSL.
Tree 1867' from DER, 338' left of centerline, 567' MSL.
Tree 1980' from DER, 456' left of centerline, 568' MSL.

VERNON, TX

WILBARGER COUNTY (F05)

TAKEOFF MINIMUMS AND (OBSTACLE) DEPARTURE PROCEDURES

ORIG 29JUL10 (10210) (FAA)

TAKEOFF OBSTACLE NOTES:

Rwy 2, vehicle on road 401' from DER, 587' right of centerline, up to 15' AGL/1269' MSL.
Pole 329' from DER, 525' right of centerline, up to 30' AGL/1284' MSL.
Ground 56' from DER, 399' left of centerline, 1258' MSL.
Rwy 20, vehicle on road 451' from DER, 604' right of centerline, up to 15' AGL/1279' MSL.
Rwy 34, trees beginning 1178' from DER, 530' right of centerline, up to 60' AGL/1309' MSL.
Vehicle on road 472' from DER, 445' left of centerline, up to 15' AGL/1274' MSL.

TAKEOFF MINIMUMS, (OBSTACLE) DEPARTURE PROCEDURES, AND DIVERSE VECTOR AREA (RADAR VECTORS)

22223



TAKEOFF MINIMUMS, (OBSTACLE) DEPARTURE PROCEDURES, AND DIVERSE VECTOR AREA (RADAR VECTORS)



22223

WEATHERFORD, TX

PARKER COUNTY (WEA)

TAKEOFF MINIMUMS AND (OBSTACLE) DEPARTURE PROCEDURES

ORIG 17NOV11 (11321) (FAA)

DEPARTURE PROCEDURE:

Rwy 35, climb heading 355° to 1600 before turning left.

TAKEOFF OBSTACLE NOTES:

Rwy 17, trees beginning 430' from DER, left and right of centerline, up to 35' AGL/1016' MSL.

Houses beginning 952' from DER, 76' left of centerline, up to 30' AGL/1012' MSL.

Utility poles beginning 1958' from DER, 185' right of centerline, up to 55' AGL/1037' MSL.

Rwy 35, trees beginning 25' from DER, 176' left of centerline, up to 35' AGL/1014' MSL.

Vehicle on road 105' from DER, across centerline, 17' AGL/1007' MSL.

Sign and pole 193' from DER, 295' right of centerline, 30' AGL/1008' MSL.

WHEELER, TX

WHEELER MUNI (T59)

TAKEOFF MINIMUMS AND (OBSTACLE) DEPARTURE PROCEDURES

ORIG 29JUL10 (10210) (FAA)

TAKEOFF OBSTACLE NOTES:

Rwy 17, hanger 360' from DER, 399' left of centerline, 15' AGL/2504' MSL.

Utility pole 593' from DER, 513' right of centerline, 30' AGL/2509' MSL.

Utility pole 623' from DER, 507' left of centerline, 30' AGL/2499' MSL.

Tree 2656' from DER, 887' right of centerline, 50' AGL/2569' MSL.

Rwy 35, tree 2267' from DER, 776' right of centerline, 50' AGL/2497' MSL.

WICHITA FALLS, TX

KICKAPOO DOWNTOWN (CWC)

TAKEOFF MINIMUMS AND (OBSTACLE) DEPARTURE PROCEDURES

AMDT 3 20JUN19 (19171) (FAA)

TAKEOFF MINIMUMS:

Rwy 35, 300-1¼ or std. w/min. climb of 360' per NM to 1500.

DEPARTURE PROCEDURE:

Rwy 17, climb heading 176° to 1700 before proceeding on course.

Rwy 35, climb heading 356° to 2100 before proceeding on course.

TAKEOFF OBSTACLE NOTES:

Rwy 17, poles, vehicle on road, signs, trees beginning 307' from DER, on centerline, up to 54' AGL/1056' MSL.

Vehicle on road beginning 320' from DER, 178' left of centerline, up to 1018' MSL.

Vehicle on road beginning 562' from DER, 213' left of centerline, up to 1019' MSL.

Vehicle on road 713' from DER, 138' left of centerline, 1021' MSL.

Transmission line beginning 2136' from DER, 393' left of centerline, up to 97' AGL/1089' MSL.

Transmission line 2473' from DER, 103' right of centerline, 80' AGL/1081' MSL.

Transmission line 2648' from DER, 600' right of centerline, 85' AGL/1083' MSL.

Transmission line 2752' from DER, 897' right of centerline, 75' AGL/1075' MSL.

Rwy 35, pole 176' from DER, 312' left of centerline, 33' AGL/1008' MSL.

Pole 1.3 NM from DER, 1889' right of centerline, 153' AGL/1274' MSL.

WICHITA VALLEY (F14)

TAKEOFF MINIMUMS AND (OBSTACLE) DEPARTURE PROCEDURES

AMDT 1A 22APR21 (21112) (FAA)

TAKEOFF MINIMUMS:

Rwys 4, 16, 22, 34, NA - Environmental.

Rwy 13, std. w/min. climb of 334' per NM to 2400.

TAKEOFF OBSTACLE NOTES:

Rwy 13, vehicle on road 269' from DER, 516' right of centerline, 17' AGL/996' MSL.

Trees beginning 385' from DER, 104' right of centerline, up to 100' AGL/1079' MSL.

Railroad 445' from DER, 546' right of centerline, 23' AGL/1002' MSL.

Rwy 31, pole 975' from DER, 627' right of centerline, 35' AGL/1035' MSL.

Pole 1047' from DER, 593' right of centerline, 33' AGL/1040' MSL.

Pole beginning 1132' from DER, 749' right of centerline, up to 35' AGL/1043' MSL.

Pole 1379' from DER, 859' right of centerline, 38' AGL/1045' MSL.

WINNSBORO, TX

WINNSBORO MUNI (F51)

TAKEOFF MINIMUMS AND (OBSTACLE) DEPARTURE PROCEDURES

ORIG 04AUG83 (83216) (FAA)

DEPARTURE PROCEDURE:

Rwys 1, 19, climb runway heading to 1000 prior to turn.

11 AUG 2022 to 08 SEP 2022

11 AUG 2022 to 08 SEP 2022



TAKEOFF MINIMUMS, (OBSTACLE) DEPARTURE PROCEDURES, AND DIVERSE VECTOR AREA (RADAR VECTORS)



22223

SC-2