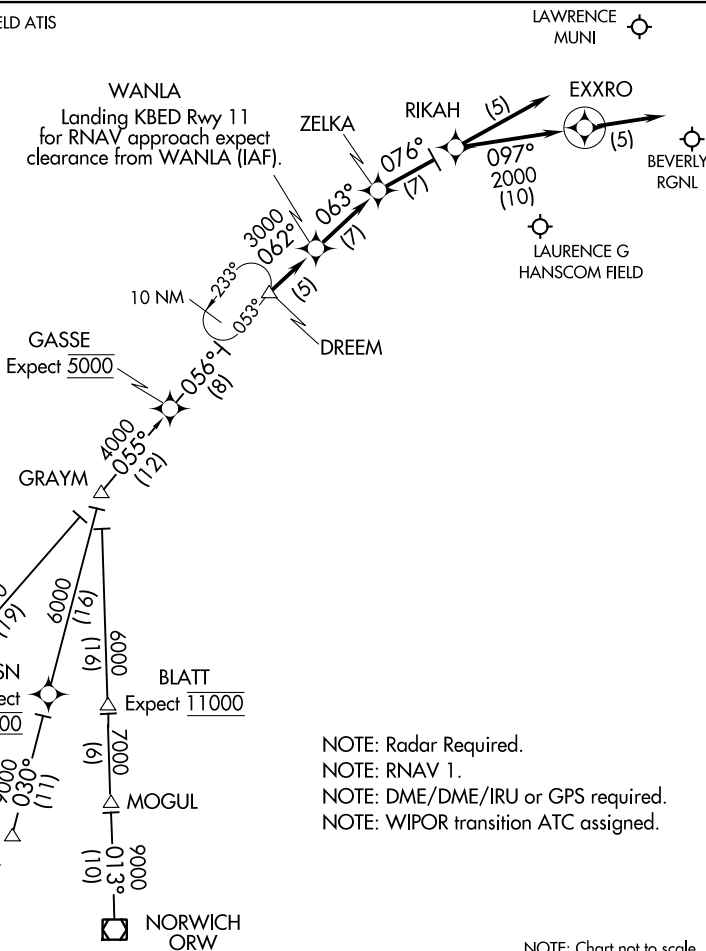


# DREEM TWO ARRIVAL (RNAV)

BEDFORD, MASSACHUSETTS

LAURENCE G HANSCOM FIELD ATIS  
 124.6  
 BEVERLY RGNL ATIS  
 119.2  
 LAWRENCE MUNI ATIS  
 126.75  
 BOSTON APP CON  
 124.4 279.6  
 BRADLEY APP CON  
 119.0 327.1



NOTE: Radar Required.  
 NOTE: RNAV 1.  
 NOTE: DME/DME/IRU or GPS required.  
 NOTE: WIPOR transition ATC assigned.

NOTE: Chart not to scale.

HARTFORD TRANSITION (HFD.DREEM2):  
NORWICH TRANSITION (ORW.DREEM2):  
WIPOR TRANSITION (WIPOR.DREEM2):

LANDING BVY ALL RWYS, BED RWY 23 & 29: From DREEM on track 062° to WANLA, then on track 063° to ZELKA, then on track 076° to RIKAH, then on track 097° to EXXRO, then on track 097°. Expect radar vectors to destination airport and final approach course.

LANDING BED RWY 11: From DREEM on track 062° to WANLA, then on track 063° to ZELKA. Expect ILS approach.

LANDING LWM ALL RWYS: From DREEM on track 062° to WANLA, then on track 063° to ZELKA, then on track 076° to RIKAH, then on track 076°, expect radar vectors to final approach course.

# DREEM TWO ARRIVAL (RNAV)

BEDFORD, MASSACHUSETTS

# GRAY FIVE ARRIVAL

AL-626 (FAA)

BEDFORD, MASSACHUSETTS

LAURENCE G HANSCOM FIELD ATIS  
124.6  
BEVERLY RGNL ATIS  
119.2  
LAURENCE MUNI ATIS  
126.75  
BOSTON APP CON  
124.4 279.6  
BRADLEY APP CON  
119.0 327.1  
BOSTON CENTER  
133.42 307.9

GARDNER  
110.6 GDM  
Chan 43

LAWRENCE MUNI

FITCHBURG MUNI

BEVERLY RGNL

LAURENCE G HANSCOM FIELD

WESTOVER  
114.0 CEF  
Chan 87

GRAYM  
N42°06.07'  
W72°01.89'

DREEM  
N42°21.71'  
W71°44.57'

At DREEM INT:  
RNAV Equipped Aircraft: Proceed direct destination. Expect RADAR vectors to approach course.  
NON-RNAV Equipped Aircraft: Expect RADAR vectors to approach course

GASSE  
N42°15.77'  
W71°51.29'  
Expect 5000

DVANY  
N41°51.74'  
W72°18.19'  
Expect 11000

HARTFORD  
114.9 HFD  
Chan 96  
N41°38.47'-W72°32.85'

PAISN  
N41°50.38'  
W72°07.04'

BLATT  
N41°49.62'  
W72°00.92'  
Expect 11000

PROVIDENCE  
115.6 PVD  
Chan 103

WIPOR  
N41°39.38'  
W72°10.63'

L-33-34, H-10-12

MOGUL  
N41°43.38'  
W72°00.55'

NORWICH  
110.0 ORW  
Chan 37  
N41°33.38'-W71°59.96'  
L-33-34, H-10-12

Note: RADAR required.  
Note: STAR applicable to aircraft requesting 11000 and above.  
Note: ATC may assign STAR to aircraft at and below 10000.

NOTE: Chart not to scale.

### ARRIVAL ROUTE DESCRIPTION

HARTFORD TRANSITION (HFD.GRAYM5): From over HFD VOR/DME on HFD R-053 to GRAYM INT. Thence. . . .

NORWICH TRANSITION (ORW.GRAYM5): From over ORW VOR/DME on ORW R-011 to GRAYM INT. Thence. . . .

. . . . From over GRAYM INT on HFD R-053 to GASSE INT then to DREEM INT.

At DREEM INT:

RNAV EQUIPPED AIRCRAFT: Proceed direct destination expect radar vectors to approach course.

NON-RNAV EQUIPPED AIRCRAFT: Expect radar vectors to approach course.

# GRAY FIVE ARRIVAL

BEDFORD, MASSACHUSETTS

NE-1, 19 JUL 2018 to 16 AUG 2018

NE-1, 19 JUL 2018 to 16 AUG 2018

ZELKA ZELKA2] 07DEC17

ZELKA TWO ARRIVAL (RNAV)

BEDFORD, MASSACHUSETTS

BOSTON APP CON  
124.4 279.6  
LAURENCE G HANSCOM FIELD ATIS  
124.6  
BEVERLY RGNL ATIS  
119.2  
LAURENCE MUNI ATIS  
126.75

  
LAURENCE  
MUNI

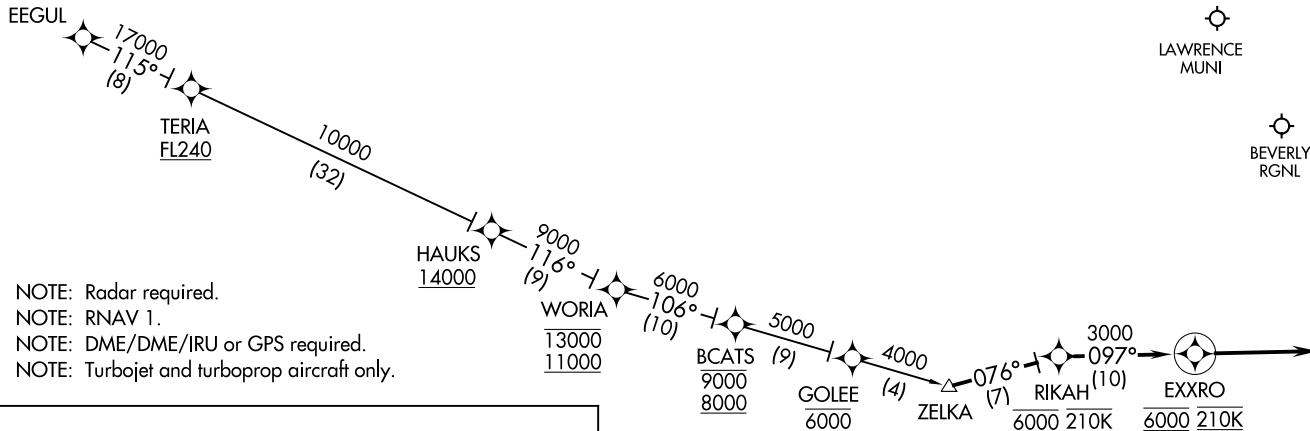
  
BEVERLY  
RGNL

  
LAURENCE G  
HANSCOM FIELD

ZELKA ZELKA2] 17341

AL-626 (FAA)

BEDFORD, MASSACHUSETTS



- NOTE: Radar required.
- NOTE: RNAV 1.
- NOTE: DME/DME/IRU or GPS required.
- NOTE: Turbojet and turboprop aircraft only.

### ARRIVAL ROUTE DESCRIPTION

#### EEGUL TRANSITION (EEGUL.ZELKA2):

From ZELKA on track 076° to cross RIKAH at 6000 and 210K, then on track 097° to cross EXXRO at 6000 and at 210K, then on track 097°. Expect radar vectors to destination airport and final approach course.



NOTE: Chart not to scale.