

WAAS CH <b>90515</b> <b>W07A</b>	APP CRS <b>068°</b>	Rwy Idg TDZE <b>1532</b> Apt Elev <b>1538</b>	<b>3500</b>
--	------------------------	---	-------------

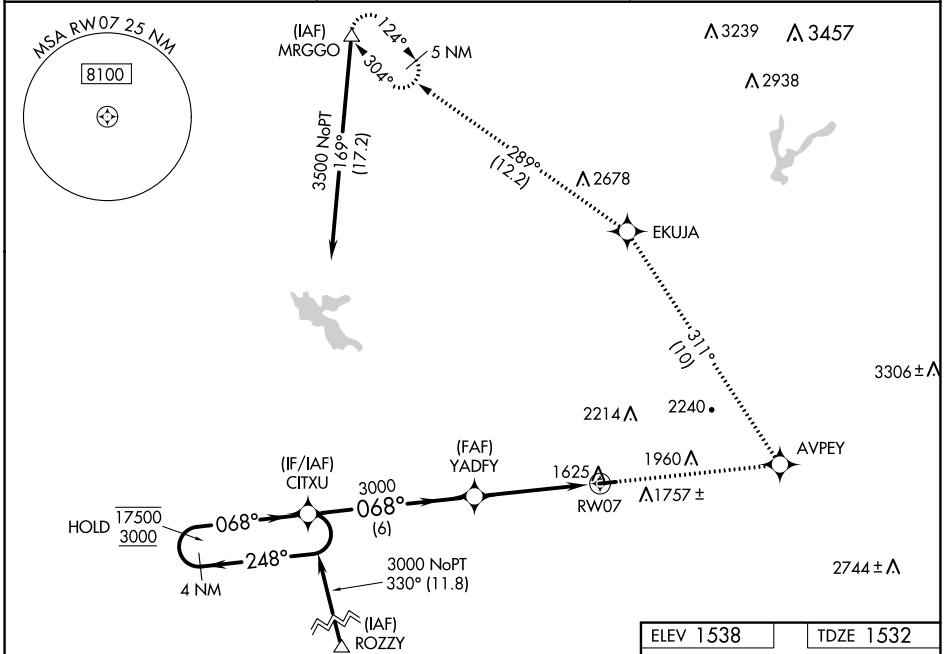
# RNAV (GPS) RWY 7

AUBURN MUNI (AUN)

RNP APCH.  
 ⚠ Circling Rwy 25 NA at night. Rwy 7 helicopter visibility reduction below 3/4 SM NA. For uncompensated Baro-VNAV systems, LNAV/VNAV NA below -18°C or above 54°C.

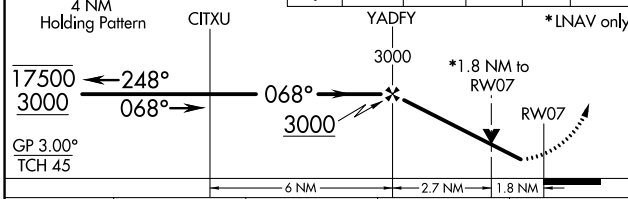
MISSED APPROACH: Climb to 5000 direct AVPEY and left turn on track 311° to EKUJA and on track 289° to MRGGO and hold.

AWOS-3 <b>119.375</b>	NORCAL APP CON <b>125.4 317.5</b>	UNICOM <b>122.7 (CTAF)</b>
--------------------------	--------------------------------------	-------------------------------

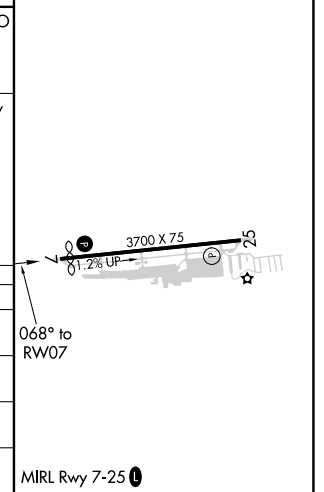


ELEV 1538	TDZE 1532
-----------	-----------

VGSI and RNAV glidepath not coincident (VGSI Angle 3.00/TCH 21).  
 5000 AVPEY tr 311° EKUJA tr 289° MRGGO



CATEGORY	A	B	C	D
LPV DA	1848-1¼	316 (400-1¼)		NA
LNAV/VNAV DA	1968-1¾	436 (500-1¾)		NA
LNAV MDA	2100-1	568 (600-1)		NA
Ⓢ CIRCLING	2200-1 662 (700-1)	2400-1¼ 862 (900-1¼)		NA



SW-2, 27 JAN 2022 to 24 FEB 2022

SW-2, 27 JAN 2022 to 24 FEB 2022