

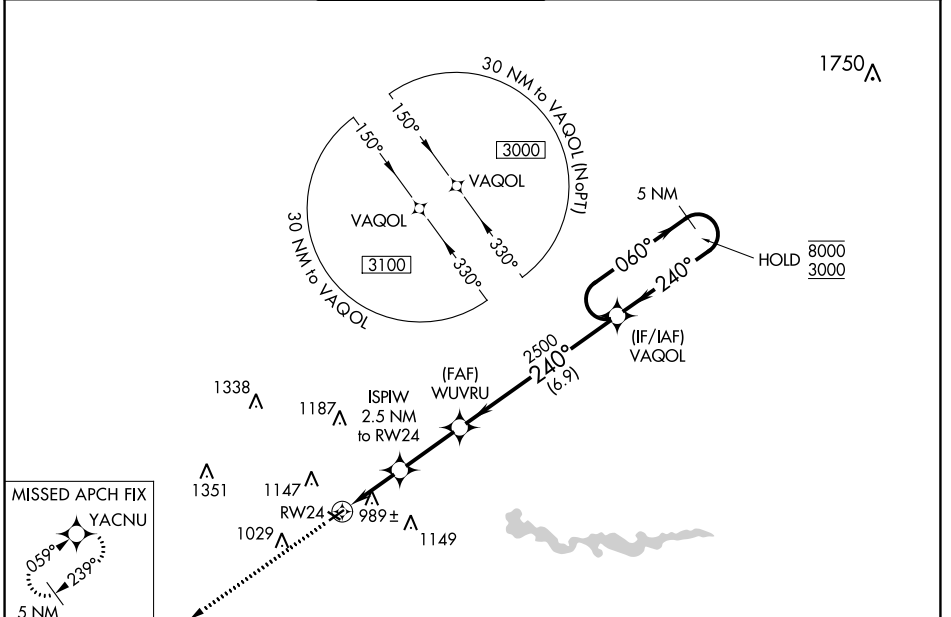
WAAS CH 61120 W24A	APP CRS 240°	Rwy Idg TDZE Apf Elev	3505 831 839
--	------------------------	-----------------------------	---

RNAV (GPS) RWY 24

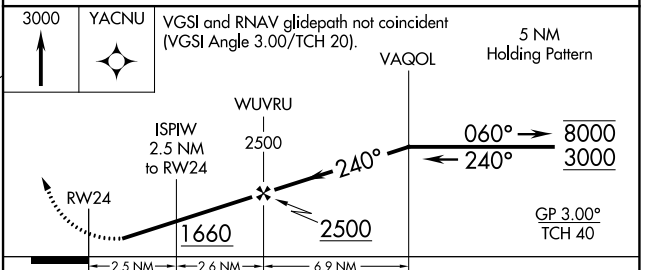
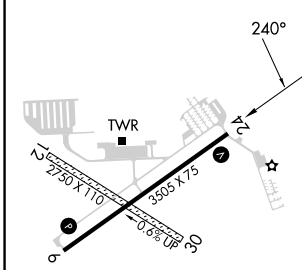
ANN ARBOR MUNI (A.R.B)

RNP APCH - GPS.		ANN ARBOR TOWER * 120.3 (CTAF) 0		GND CON 121.6	CLNC DEL 121.6	UNICOM 123.0
<p>⚠ Circling NA to Rwy 12 and 30. Rwy 24 helicopter visibility reduction below $\frac{3}{4}$ SM NA. For uncompensated Baro-VNAV systems, LNAV/VNAV NA below -16°C or above 38°C.</p>				<p>MISSED APPROACH: Climb to 3000 direct YACNU and hold.</p>		

ATIS 134.55	DETROIT APP CON 118.95 284.0	ANN ARBOR TOWER * 120.3 (CTAF) 0	GND CON 121.6	CLNC DEL 121.6	UNICOM 123.0
-----------------------	--	---	-------------------------	--------------------------	------------------------



ELEV 839	TDZE 831
-----------------	-----------------



CATEGORY	A	B	C	D
LPV DA	1132-1 301 (300-1)			
LNAV/VNAV DA	1170-1 339 (400-1)			
LNAV MDA	1300-1 469 (500-1)		1300-1 $\frac{3}{8}$ 469 (500-1 $\frac{3}{8}$)	

EC-1, 22 FEB 2024 to 21 MAR 2024

EC-1, 22 FEB 2024 to 21 MAR 2024

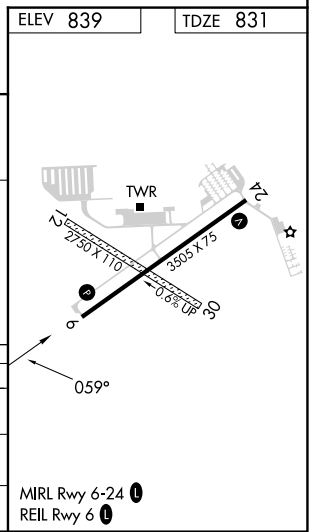
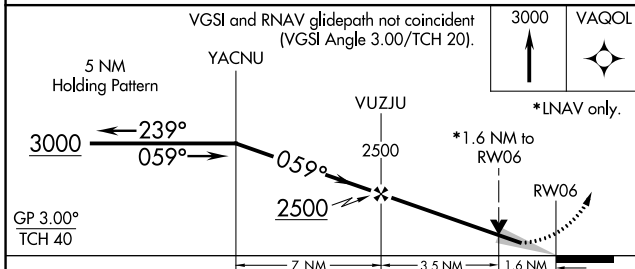
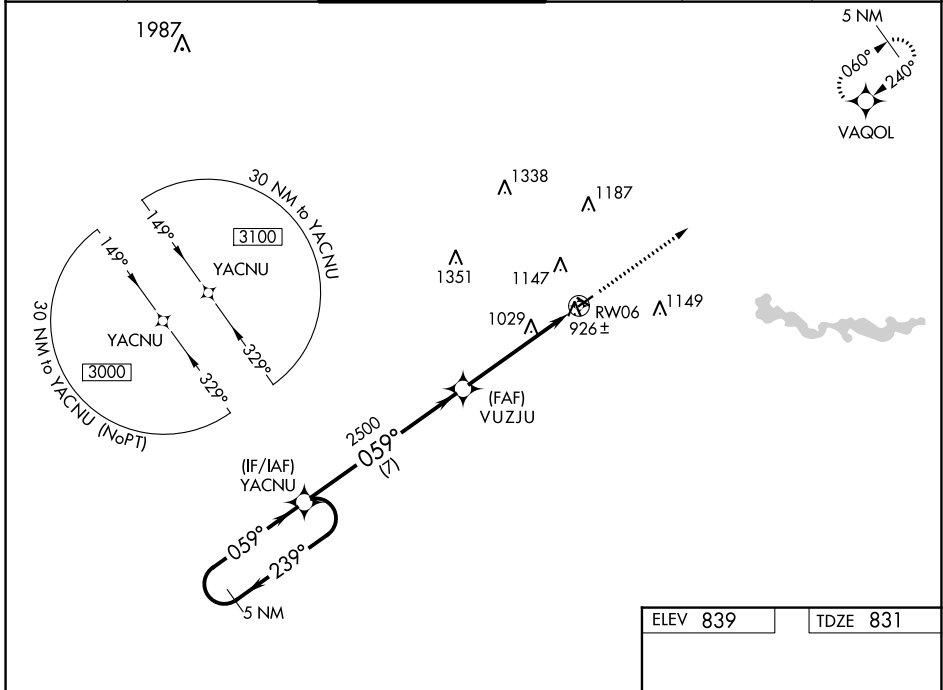
WAAS CH 77601 W06A	APP CRS 059°	Rwy Idg TDZE Apt Elev	3505 831 839
--	------------------------	-----------------------------	---

RNAV (GPS) RWY 6

ANN ARBOR MUNI (ARB)

RNP APCH.	MISSED APPROACH: Climb to 3000 direct VAQOL and hold.
<p>⚠ For uncompensated Baro-VNAV systems, LNAV/VNAV NA below -16°C or above 38°C. VDP and Baro-VNAV NA when using Willow Run altimeter setting. When local altimeter setting not received, use Willow Run altimeter setting and increase all DA/MDA 40 feet; increase LNAV Cats C and D visibility 1/8 SM.</p>	

ATIS 134.55	DETROIT APP CON 118.95 284.0	ANN ARBOR TOWER ★ 120.3 (CTAF) 0	GND CON 121.6	CLNC DEL 121.6	UNICOM 123.0
-----------------------	--	--	-------------------------	--------------------------	------------------------



CATEGORY	A	B	C	D
LPV DA	1081-1 250 (300-1)			
LNAV/VNAV DA	1097-1 266 (300-1)			
LNAV MDA	1360-1	529 (600-1)	1360-1½	529 (600-1½)

EC-1, 22 FEB 2024 to 21 MAR 2024

EC-1, 22 FEB 2024 to 21 MAR 2024

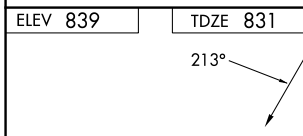
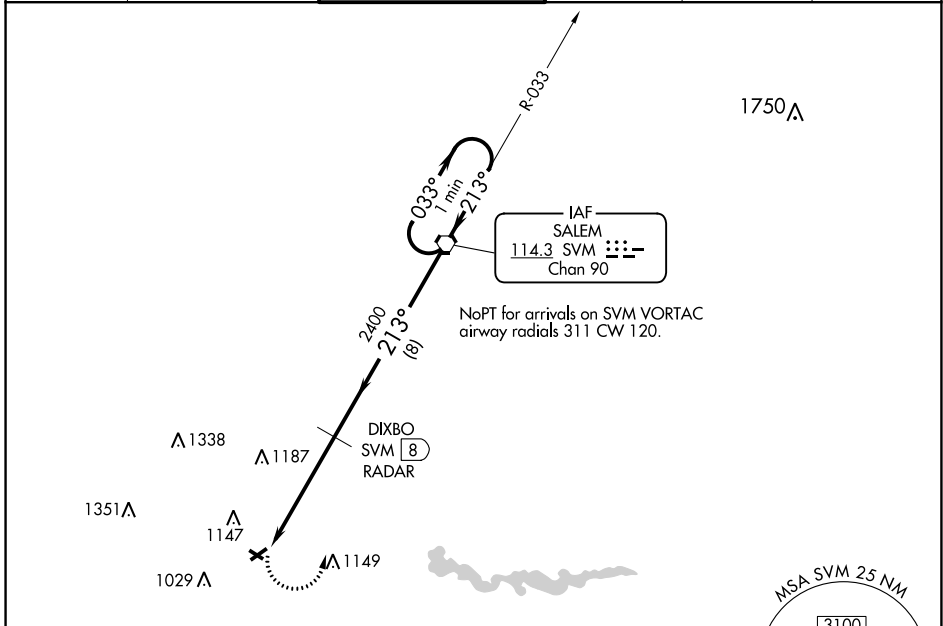
VORTAC SVM 114.3 Chan 90	APP CRS 213°	Rwy Idg TDZE Apt Elev	3505 831 839
--	------------------------	-----------------------------	---

VOR RWY 24
ANN ARBOR MUNI (ARB)

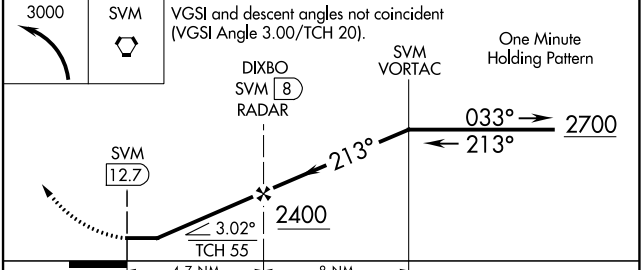
⚠ Inop table does not apply. Rwy 24 helicopter visibility reduction below 3/4 SM NA.
 ⚠ When local altimeter setting not received, use Willow Run altimeter setting and increase all MDAs 40 feet and increase visibility S-24 Cat C/D visibility 1/8 SM and Circling Cat C/D visibility 1/4 SM. Circling NA to Rwys 12 and 30.

MISSED APPROACH: Climbing left turn to 3000 direct SVM VORTAC and hold.

ATIS 134.55	DETROIT APP CON 118.95 284.0	ANN ARBOR TOWER * 120.3 (CTAF) 0	GND CON 121.6	CLNC DEL 121.6	UNICOM 123.0
-----------------------	--	--	-------------------------	--------------------------	------------------------



DME or RADAR REQUIRED



ELEV 839	TDZE 831
MIRL Rwy 6-24 (1)	
REIL Rwy 6 (1)	
FAF to MAP 4.7 NM	
Knots	60 90 120 150 180
Min:Sec	4:42 3:08 2:21 1:53 1:34

CATEGORY	A	B	C	D
S-24	1460-1	629 (700-1)	1460-1 3/4 629 (700-1 3/4)	1460-1 3/4 629 (700-1 3/4)
CIRCLING	1500-1	661 (700-1)	1500-1 3/4 661 (700-1 3/4)	1640-2 1/2 801 (900-2 1/2)

VORTAC SVM 114.3 Chan 90	APP CRS 035°	Rwy Idg TDZE Apt Elev	3505 831 839
--	------------------------	-----------------------------	---

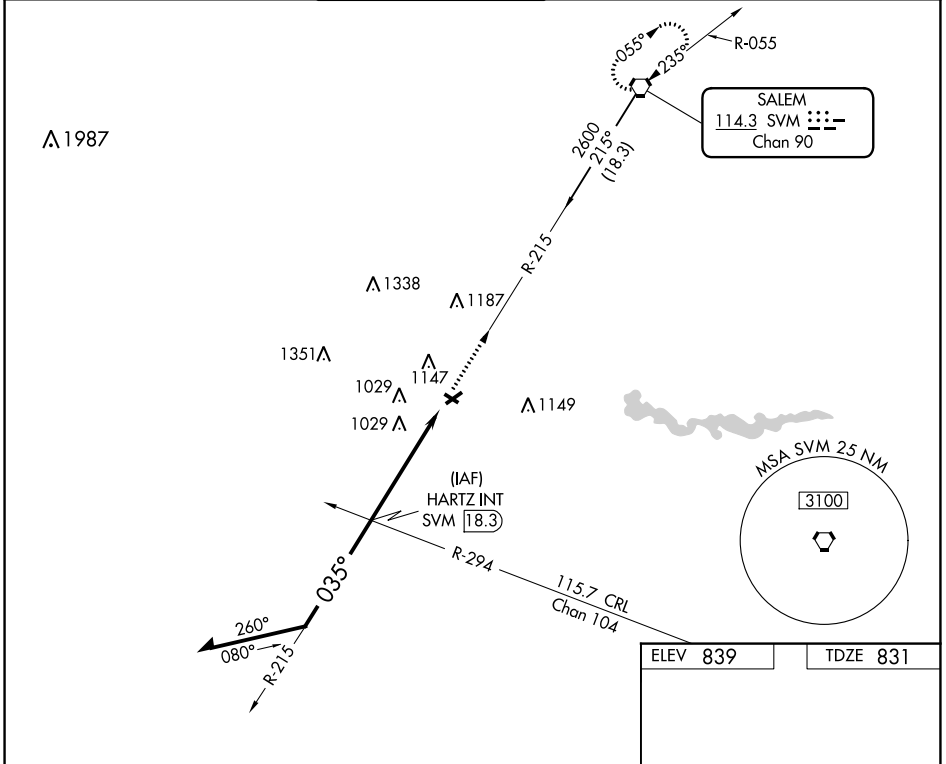
VOR RWY 6

ANN ARBOR MUNI (A.R.B)

▼ When local altimeter setting not received, use Willow Run altimeter setting and increase all MDA 40 feet and Cat C/D visibility 1/8 mile and Circling Cat C/D visibility 1/4 mile.
 ▲ Rwy 6 helicopter visibility reduction below 3/4 SM NA. Circling NA to Rwy 12 and 30.

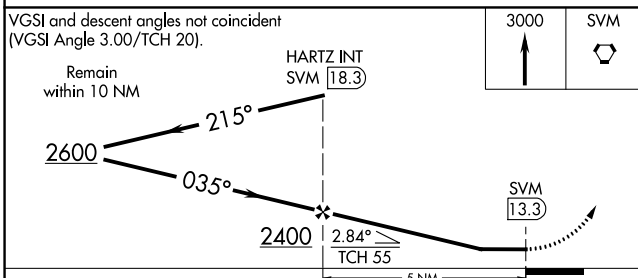
MISSED APPROACH: Climb to 3000 direct SVM VORTAC and hold.

ATIS 134.55	DETROIT APP CON 118.95 284.0	ANN ARBOR TOWER * 120.3 (CTAF) 0	GND CON 121.6	CLNC DEL 121.6	UNICOM 123.0
-----------------------	--	--	-------------------------	--------------------------	------------------------

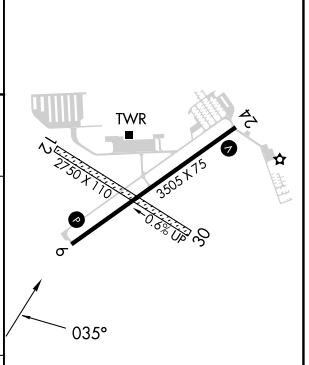


EC-1, 22 FEB 2024 to 21 MAR 2024

EC-1, 22 FEB 2024 to 21 MAR 2024



ELEV 839	TDZE 831
----------	----------



CATEGORY	A	B	C	D
S-6	1360-1	529 (600-1)	1360-1½	529 (600-1½)
CIRCLING	1500-1	661 (700-1)	1500-1¾	1640-2½
			661 (700-1¾)	801 (900-2½)

FAF to MAP 5 NM					
Knots	60	90	120	150	180
Min:Sec	5:00	3:20	2:30	2:00	1:40