

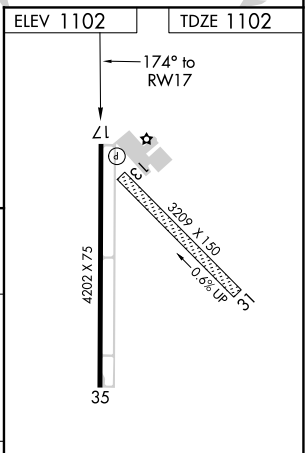
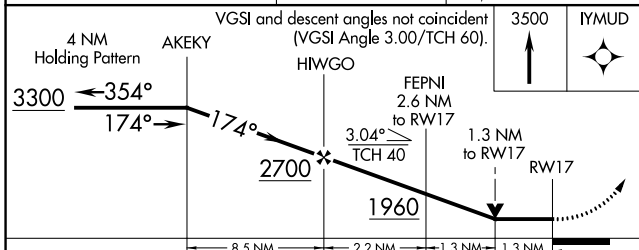
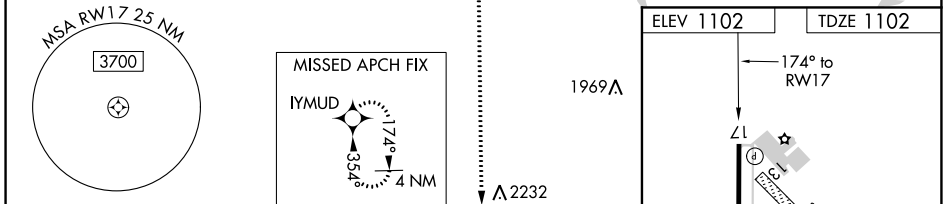
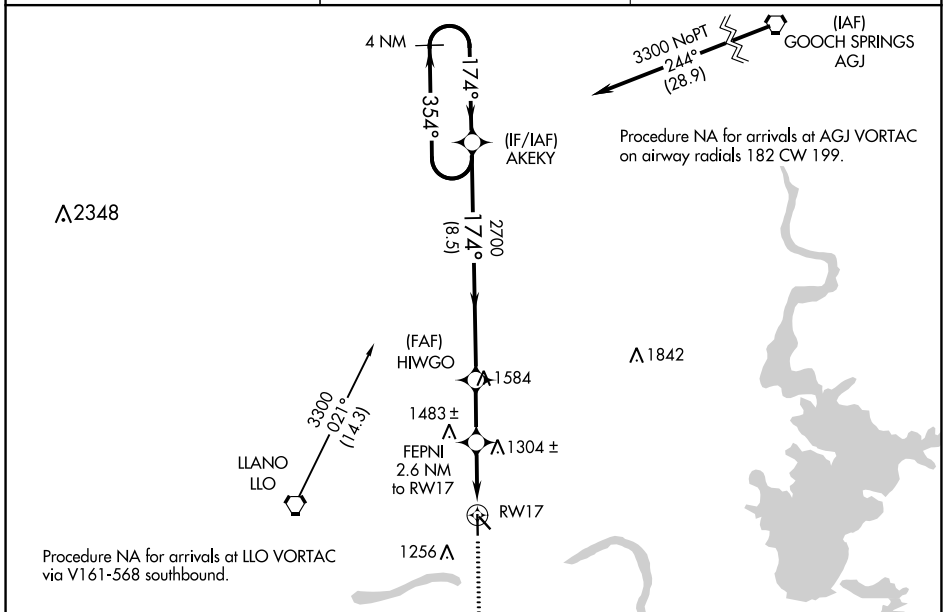
APP CRS	Rwy Idg	4202
174°	TDZE	1102
	Apt Elev	1102

RNAV (GPS) RWY 17

LLANO MUNI (A.QO)

RNP APCH.	MISSED APPROACH: Climb to 3500 direct IYMUD and hold.
<p>▽ When local altimeter setting not received, use Burnet altimeter setting and increase all MDA 80 feet. VDP NA when using Burnet altimeter setting. Rwy 17 helicopter visibility reduction below 3/4 SM NA.</p> <p>▲</p>	

AWOS-3 119.425	HOUSTON CENTER 132.35 317.5	UNICOM 123.05 (CTAF) ①
--------------------------	---------------------------------------	---



CATEGORY	A	B	C	D
LNAV MDA	1560-1	458 (500-1)	NA	NA

MIRL Rwy 17-35	①
----------------	----------

SC-3, 17 JUN 2021 to 15 JUL 2021

SC-3, 17 JUN 2021 to 15 JUL 2021

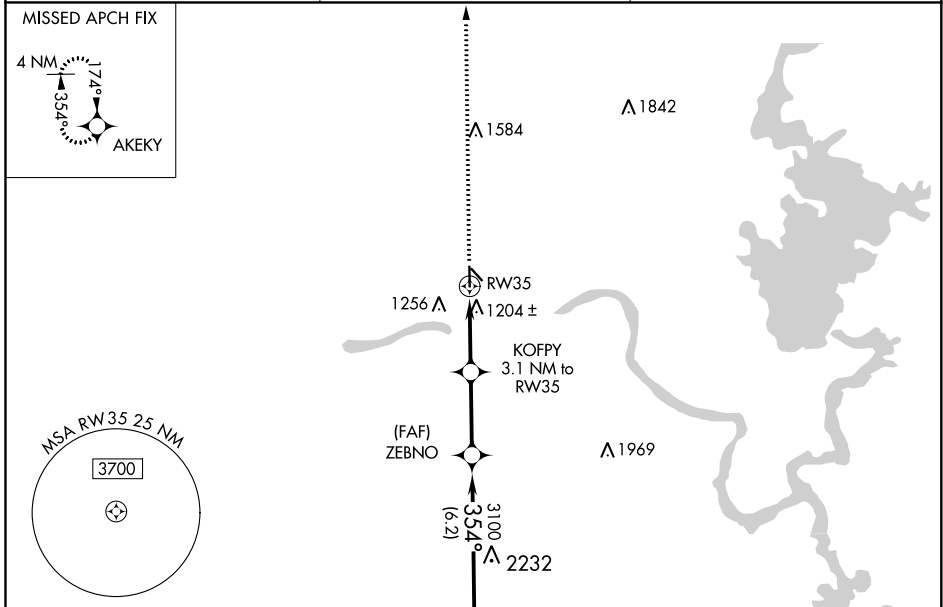
APP CRS	Rwy Idg	4202
354°	TDZE	1102
	Apt Elev	1102

RNAV (GPS) RWY 35

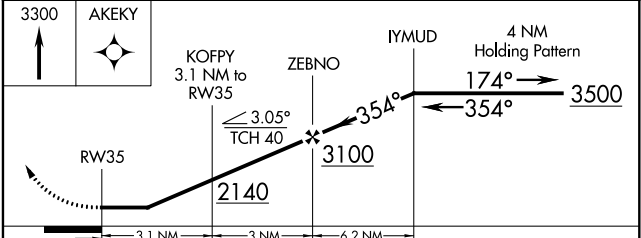
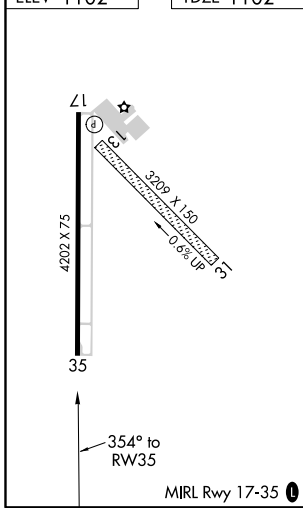
LLANO MUNI (A.QO)

RNP APCH.		MISSED APPROACH: Climb to 3300 direct AKEY and hold.
	Procedure NA at night. Rwy 35 helicopter visibility reduction below 1 SM NA.	
	When local altimeter setting not received, use Burnet altimeter setting and increase all MDA 80 feet.	

AWOS-3 119.425	HOUSTON CENTER 132.35 317.5	UNICOM 123.05 (CTAF)
--------------------------	---------------------------------------	---------------------------------



ELEV 1102	TDZE 1102
-----------	-----------



CATEGORY	A	B	C	D
LNAV MDA	1560-1	458 (500-1)	NA	

SC-3, 17 JUN 2021 to 15 JUL 2021

SC-3, 17 JUN 2021 to 15 JUL 2021

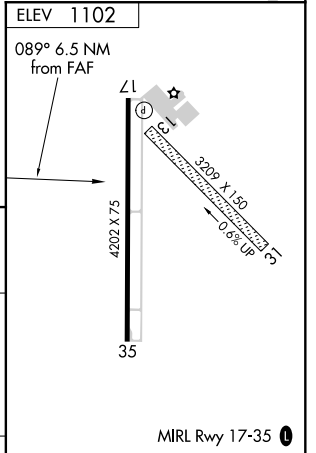
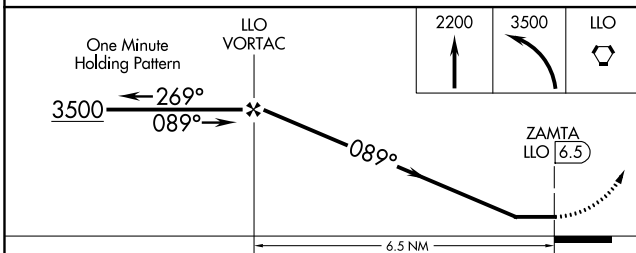
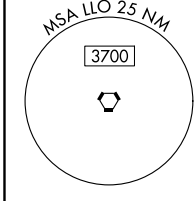
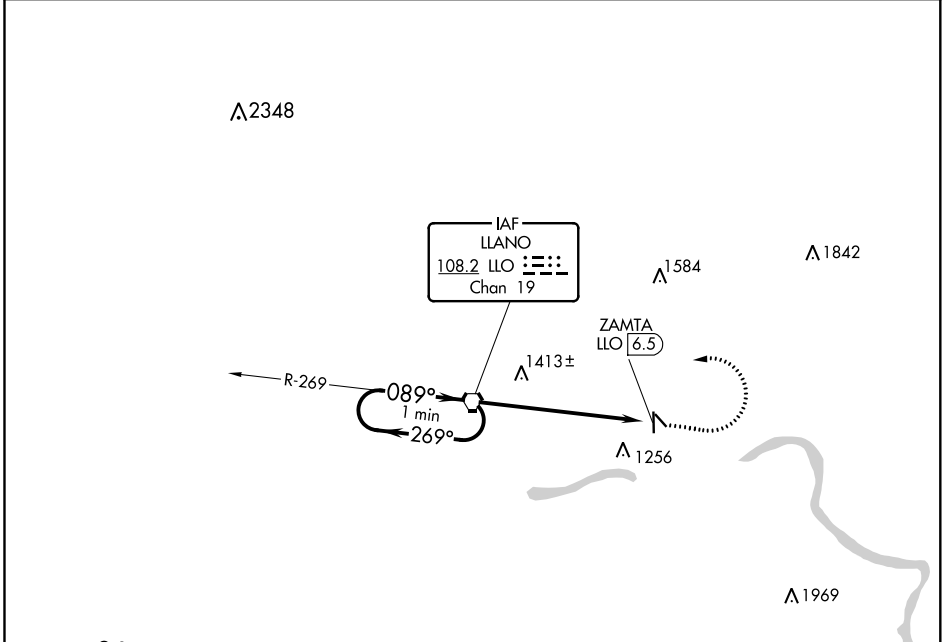
VORTAC LLO 108.2 Chan 19	APP CRS 089°	Rwy Idg TDZE Apt Elev	N/A N/A 1102
---------------------------------------	------------------------	-----------------------------	---

VOR-A
LLANO MUNI (A.QO)

⚠ Circling Rwy 13, 31 NA. Circling Rwy 35 NA at night. When local altimeter setting not received, use Burnt altimeter setting and increase all MDA 80 feet.

MISSED APPROACH: Climb to 2200 then climbing left turn to 3500 direct LLO VORTAC.

AWOS-3 119.425	HOUSTON CENTER 132.35 317.5	UNICOM 123.05 (CTAF) ①
--------------------------	---------------------------------------	---



CATEGORY	A	B	C	D	FAF to MAP 6.5 NM					
	1720-1	618 (700-1)		NA	Knots	60	90	120	150	180
C CIRCLING					Min:Sec	6:30	4:20	3:15	2:36	2:10

SC-3, 17 JUN 2021 to 15 JUL 2021

SC-3, 17 JUN 2021 to 15 JUL 2021