

WAAS CH <b>90534</b> <b>W18A</b>	APP CRS <b>182°</b>	Rwy Idg TDZE <b>675</b> Apt Elev <b>686</b>	<b>4799</b> <b>675</b> <b>686</b>
--	------------------------	---	---

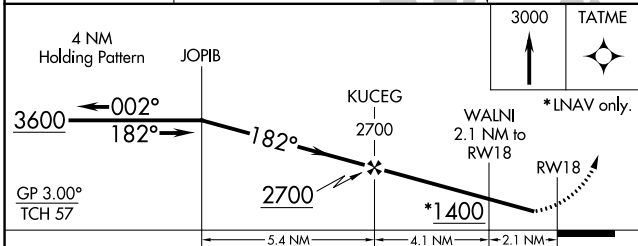
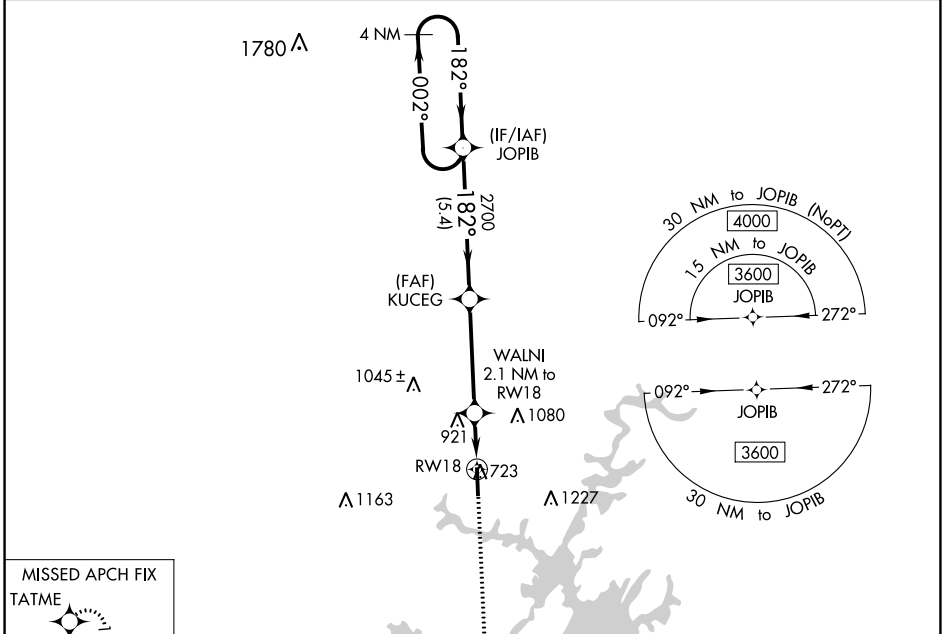
# RNAV (GPS) RWY 18

THOMAS C RUSSELL FIELD (A.L.X)

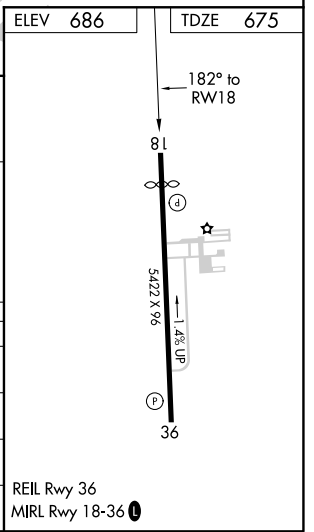
**⚠** For uncompensated Baro-VNAV systems, LNAV/VNAV NA below -16°C (4°F) or above 54°C (130°F). Rwy 18 helicopter visibility reduction below 1 SM NA. DME/DME RNP-0.3 NA.

MISSED APPROACH: Climb to 3000 direct TATME and hold.

AWOS-3PT <b>118.325</b>	MONTGOMERY APP CON * <b>121.2 269.05</b>	UNICOM <b>122.7 (CTAF) 0</b>
----------------------------	---	---------------------------------



CATEGORY	A	B	C	D
LPV DA		1061-1 $\frac{1}{4}$	386 (400-1 $\frac{1}{4}$ )	
LNAV/ VNAV DA		1214-1 $\frac{3}{4}$	539 (600-1 $\frac{3}{4}$ )	
LNAV MDA	1160-1	485 (500-1)	1160-1 $\frac{3}{8}$	485 (500-1 $\frac{5}{8}$ )
<b>C</b> CIRCLING	1180-1 494 (500-1)	1240-1 554 (600-1)	1540-2 $\frac{1}{2}$ 854 (900-2 $\frac{1}{2}$ )	1540-2 $\frac{3}{4}$ 854 (900-2 $\frac{3}{4}$ )



SE-4, 05 NOV 2020 to 03 DEC 2020

SE-4, 05 NOV 2020 to 03 DEC 2020

WAAS CH <b>61231</b> <b>W36A</b>	APP CRS <b>002°</b>	Rwy ldg TDZE <b>648</b> Apt Elev <b>686</b>	<b>5422</b> <b>648</b> <b>686</b>
--	------------------------	---	---

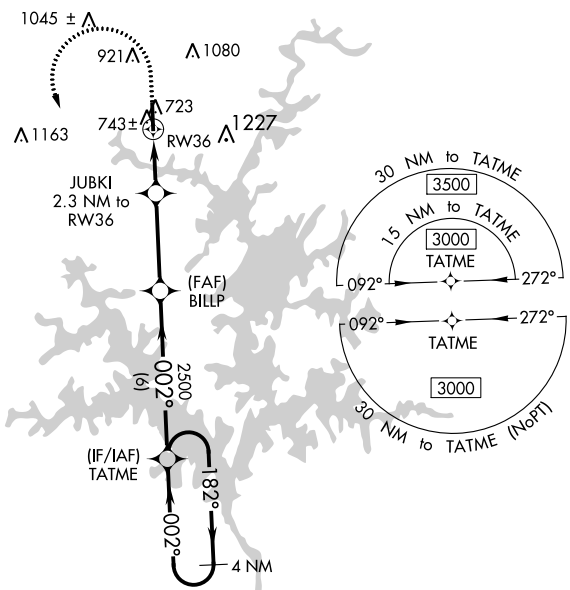
# RNAV (GPS) RWY 36

THOMAS C RUSSELL FIELD (A.L.X)

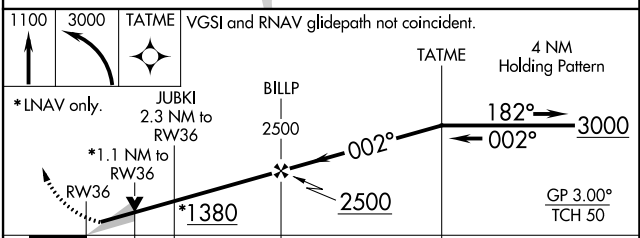
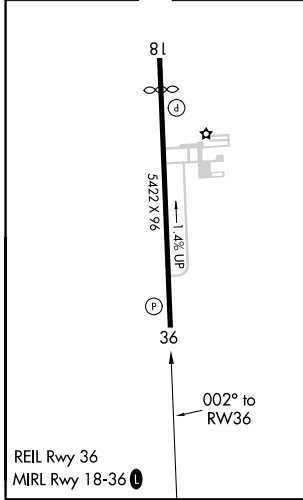
**⚠** For uncompensated Baro-VNAV systems, LNAV/VNAV NA below -16°C (4°F) or above 54°C (130°F). DME/DME RNP-0.3 NA.

MISSED APPROACH: Climb to 1100 then climbing left turn to 3000 direct TATME and hold.

AWOS-3PT <b>118.325</b>	MONTGOMERY APP CON ★ <b>121.2 269.05</b>	UNICOM <b>122.7 (CTAF) 0</b>
----------------------------	---	---------------------------------



ELEV <b>686</b>	TDZE <b>648</b>
-----------------	-----------------



CATEGORY	A	B	C	D
LPV DA		898-1	250 (300-1)	
LNAV/ LNAV DA		940-1½	292 (300-1½)	
LNAV MDA	1000-1	352 (400-1)	1000-1½	352 (400-1½)
<b>C</b> CIRCLING	1180-1 494 (500-1)	1240-1 554 (600-1)	1540-2½ 854 (900-2½)	1540-2¾ 854 (900-2¾)

SE-4, 05 NOV 2020 to 03 DEC 2020

SE-4, 05 NOV 2020 to 03 DEC 2020