

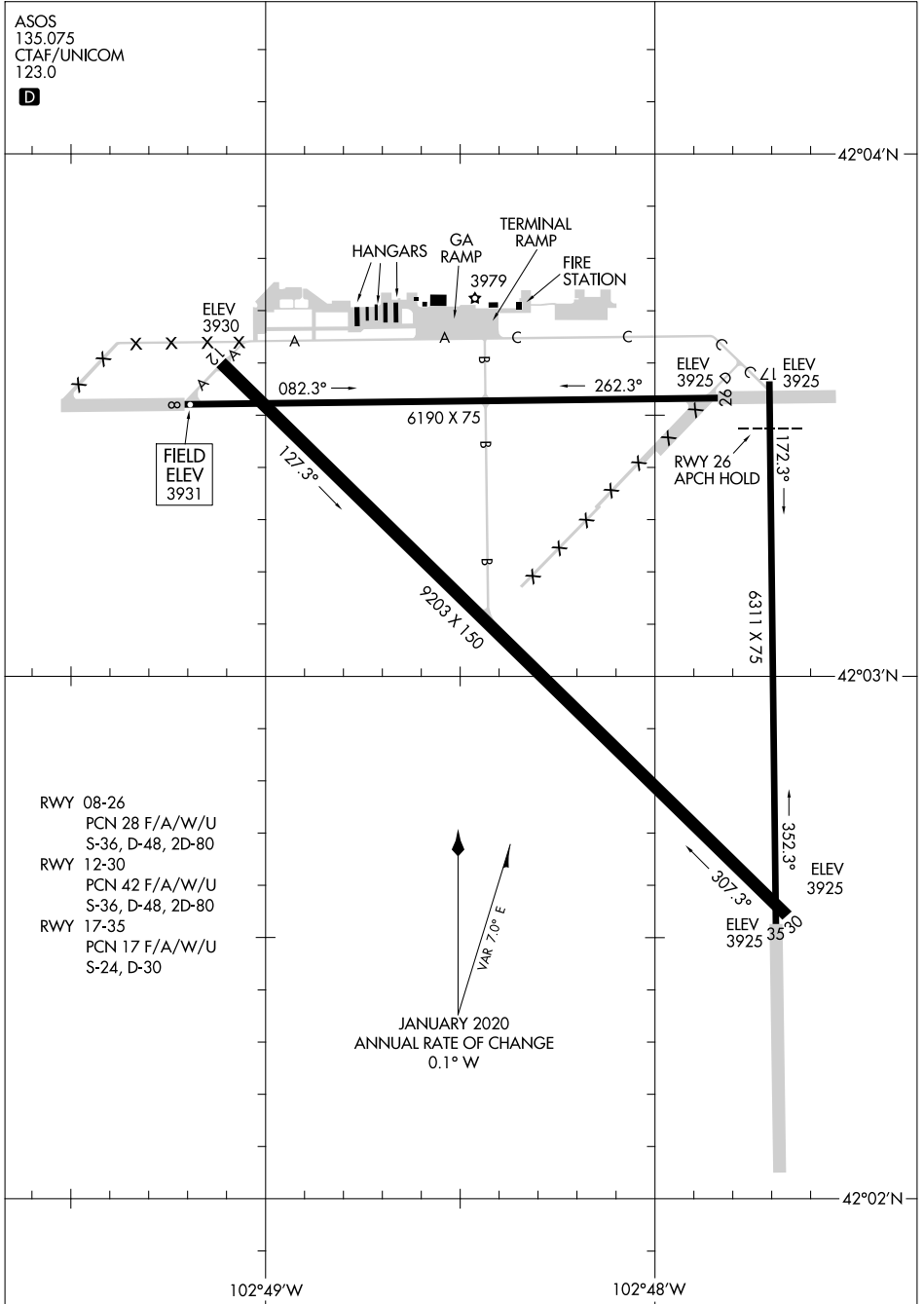
21280

# AIRPORT DIAGRAM

AL-16 (FAA)

ALLIANCE MUNI (AIA)  
ALLIANCE, NEBRASKA

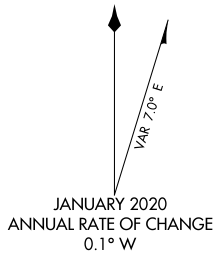
ASOS  
135.075  
CTAF/UNICOM  
123.0



NC-2, 22 FEB 2024 to 21 MAR 2024

NC-2, 22 FEB 2024 to 21 MAR 2024

- RWY 08-26  
PCN 28 F/A/W/U  
S-36, D-48, 2D-80
- RWY 12-30  
PCN 42 F/A/W/U  
S-36, D-48, 2D-80
- RWY 17-35  
PCN 17 F/A/W/U  
S-24, D-30



# AIRPORT DIAGRAM

21280

ALLIANCE, NEBRASKA  
ALLIANCE MUNI (AIA)

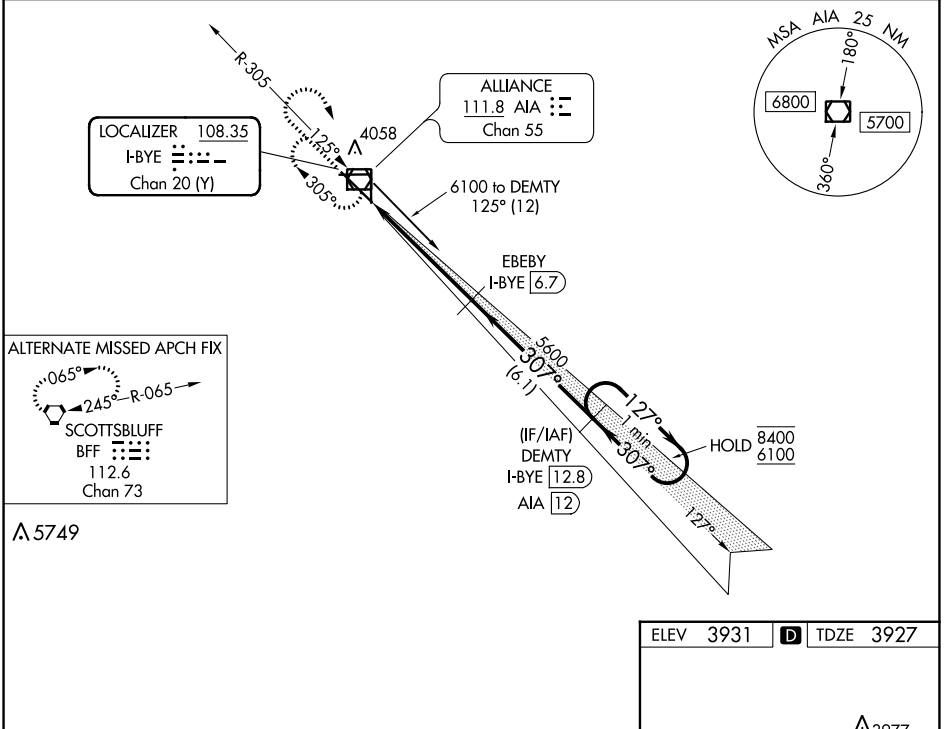
LOC/DME I-BYE <b>108.35</b> Chan 20 (Y)	APP CRS <b>307°</b>	Rwy Idg <b>9202</b> TDZE <b>3927</b> Apt Elev <b>3931</b>
---	------------------------	---

# ILS or LOC RWY 30

ALLIANCE MUNI (AIA)

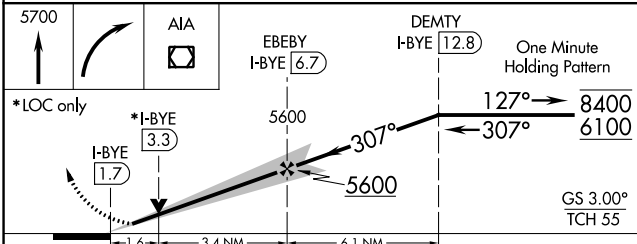
DME required. ▲ NA For inop ALS, increase S-LOC 30 Cats C/D visibility to 1½ SM.	MALSR 	MISSED APPROACH: Climb to 5700 then right turn direct AIA VOR/DME and hold.
--	-----------	---

ASOS <b>135.075</b>	DENVER CENTER <b>127.95 338.2</b>	UNICOM <b>123.0 (CTAF) 0</b>
------------------------	--------------------------------------	---------------------------------

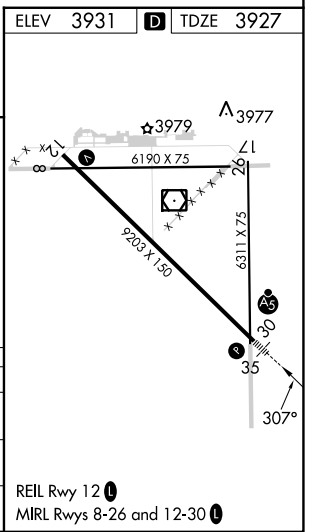


NC-2, 22 FEB 2024 to 21 MAR 2024

NC-2, 22 FEB 2024 to 21 MAR 2024



CATEGORY	A	B	C	D
S-ILS 30	4127-½ 200 (200-½)			
S-LOC 30	4500-½ 573 (600-½)	4500-1¼ 573 (600-1¼)		
CIRCLING	4500-1 569 (600-1)	4520-1 589 (600-1)	4580-1¾ 649 (700-1¾)	4640-2¼ 709 (800-2¼)



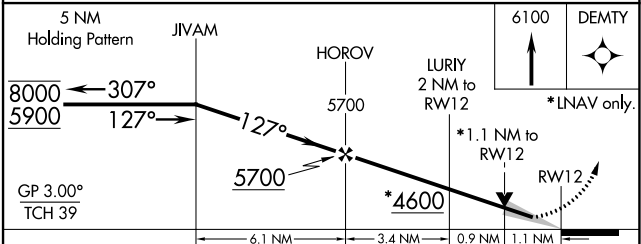
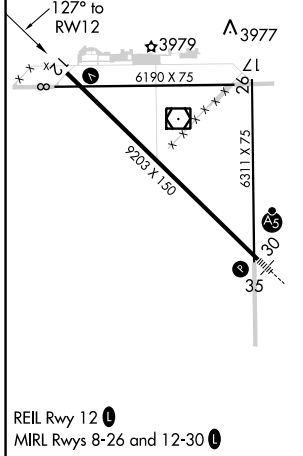
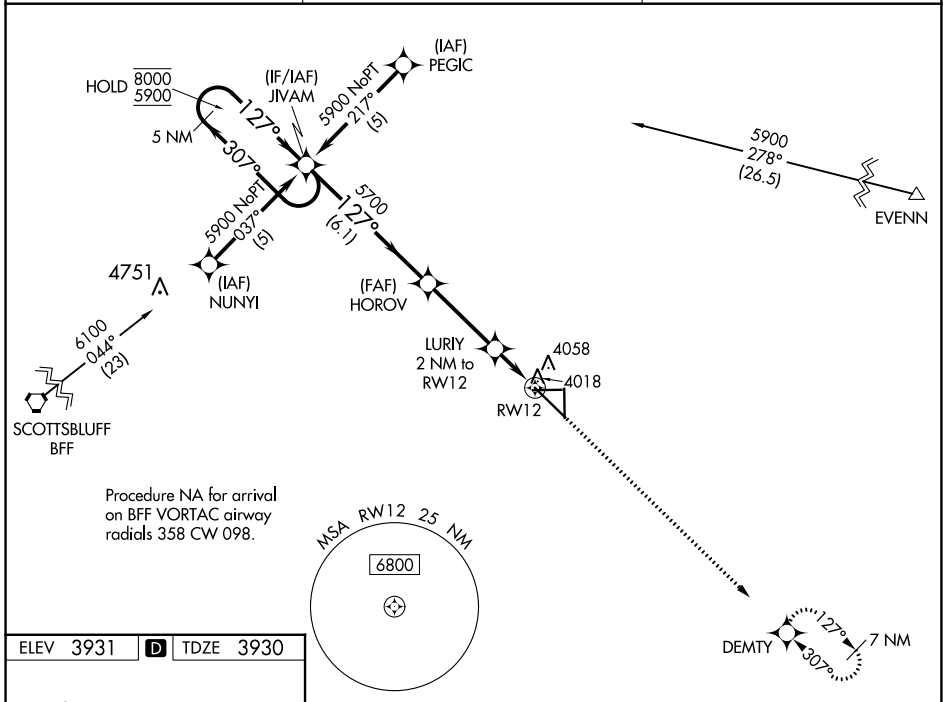
WAAS CH <b>61202</b> <b>W12A</b>	APP CRS <b>127°</b>	Rwy Idg <b>9202</b> TDZE <b>3930</b> Apt Elev <b>3931</b>
--	------------------------	---

# RNAV (GPS) RWY 12

ALLIANCE MUNI (A1A)

RNP APCH. ⚠ For uncompensated Baro-VNAV systems, LNAV/VNAV NA below -22°C or above 54°C.	MISSED APPROACH: Climb to 6100 direct DEMYT and hold.
---	---

ASOS <b>135.075</b>	DENVER CENTER <b>127.95 338.2</b>	UNICOM <b>123.0 (CTAF) 0</b>
------------------------	--------------------------------------	---------------------------------



CATEGORY	A	B	C	D
LPV DA	4180-1 250 (300-1)			
LNAV/VNAV DA	4273-1¼ 343 (400-1¼)			
LNAV MDA	4320-1 390 (400-1)	4320-1½ 390 (400-1½)	4320-1¼ 390 (400-1¼)	4320-1¼ 390 (400-1¼)
CIRCLING	4460-1 529 (600-1)	4520-1 589 (600-1)	4580-1¾ 649 (700-1¾)	4640-2¼ 709 (800-2¼)

NC-2, 22 FEB 2024 to 21 MAR 2024

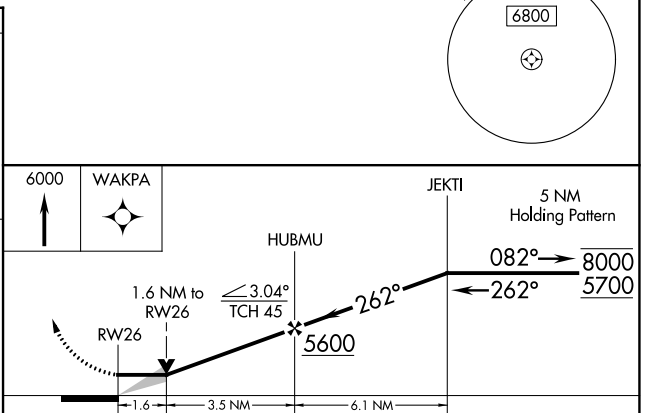
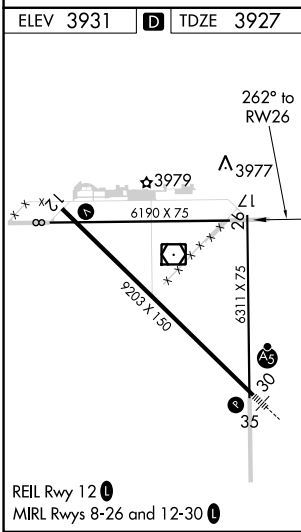
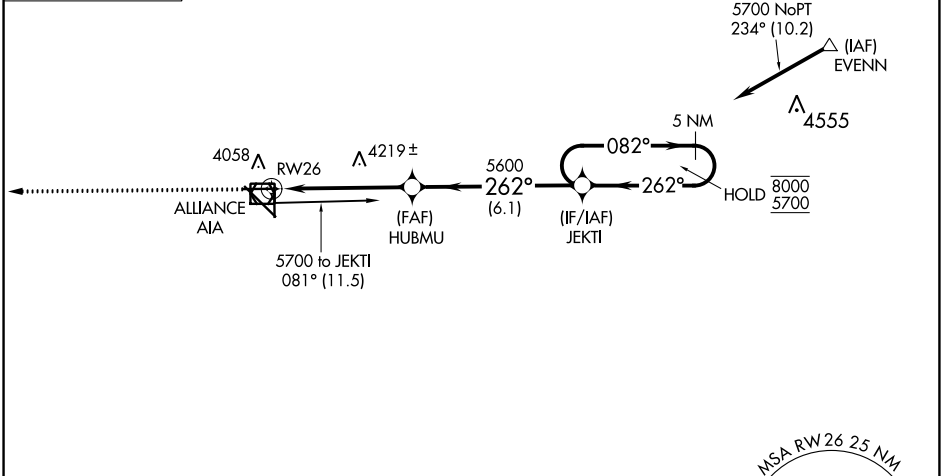
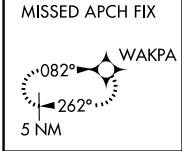
NC-2, 22 FEB 2024 to 21 MAR 2024

APP CRS	Rwy Idg	<b>6200</b>
<b>262°</b>	TDZE	<b>3927</b>
	Apt Elev	<b>3931</b>

# RNAV (GPS) RWY 26

ALLIANCE MUNI (AIA)

RNP APCH.		MISSED APPROACH: Climb to 6000 direct WAKPA and hold.
ASOS	DENVER CENTER	UNICOM
<b>135.075</b>	<b>127.95 338.2</b>	<b>123.0 (CTAF) 0</b>



CATEGORY	A	B	C	D
LNAV MDA	4480-1	553 (600-1)	4480-1 <sup>5</sup> / <sub>8</sub> 553 (600-1 <sup>5</sup> / <sub>8</sub> )	4480-1 <sup>3</sup> / <sub>4</sub> 553 (600-1 <sup>3</sup> / <sub>4</sub> )
CIRCLING	4480-1 549 (600-1)	4520-1 589 (600-1)	4580-1 <sup>3</sup> / <sub>4</sub> 649 (700-1 <sup>3</sup> / <sub>4</sub> )	4640-2 <sup>1</sup> / <sub>4</sub> 709 (800-2 <sup>1</sup> / <sub>4</sub> )

NC-2, 22 FEB 2024 to 21 MAR 2024

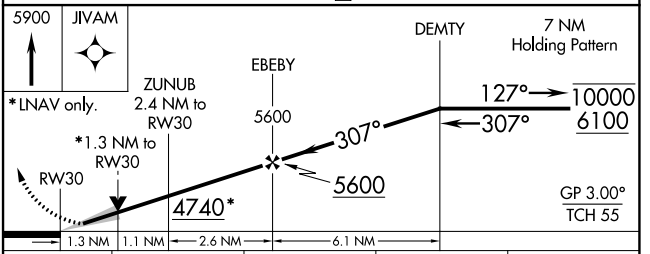
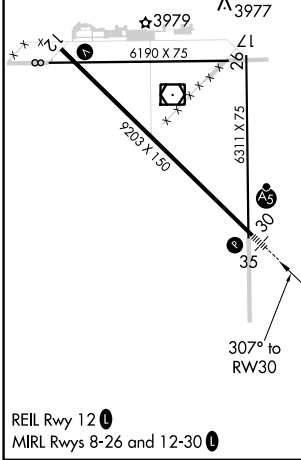
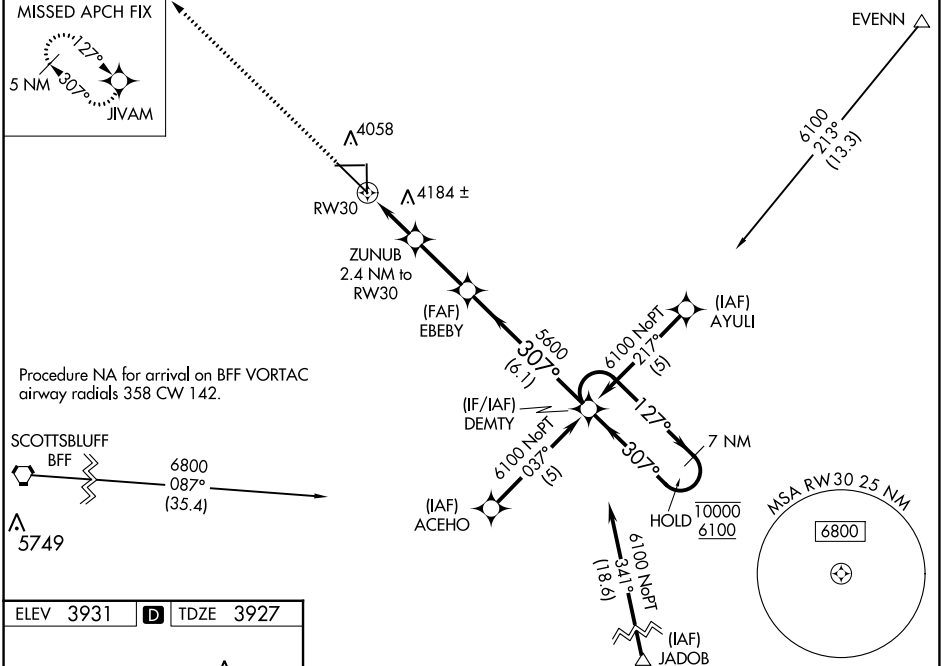
NC-2, 22 FEB 2024 to 21 MAR 2024

WAAS CH <b>82102</b> <b>W30A</b>	APP CRS <b>307°</b>	Rwy Idg <b>9202</b> TDZE <b>3927</b> Apt Elev <b>3931</b>
--	------------------------	---

# RNAV (GPS) RWY 30

ALLIANCE MUNI (AIA)

RNP APCH.	MALSR 	MISSED APPROACH: Climb to 5900 direct JIVAM and hold.
ASOS <b>135.075</b>	DENVER CENTER <b>127.95 338.2</b>	UNICOM <b>123.0 (CTAF) 0</b>



CATEGORY	A	B	C	D
LPV DA	4127-1/2 200 (200-1/2)			
LNAV/VNAV DA	4221-1/2 294 (300-1/2)			
LNAV MDA	4400-1/2 473 (500-1/2)		4400-1 473 (500-1)	
CIRCLING	4460-1 529 (600-1)	4520-1 589 (600-1)	4580-1 3/4 649 (700-1 3/4)	4640-2 1/4 709 (800-2 1/4)

NC-2, 22 FEB 2024 to 21 MAR 2024

NC-2, 22 FEB 2024 to 21 MAR 2024

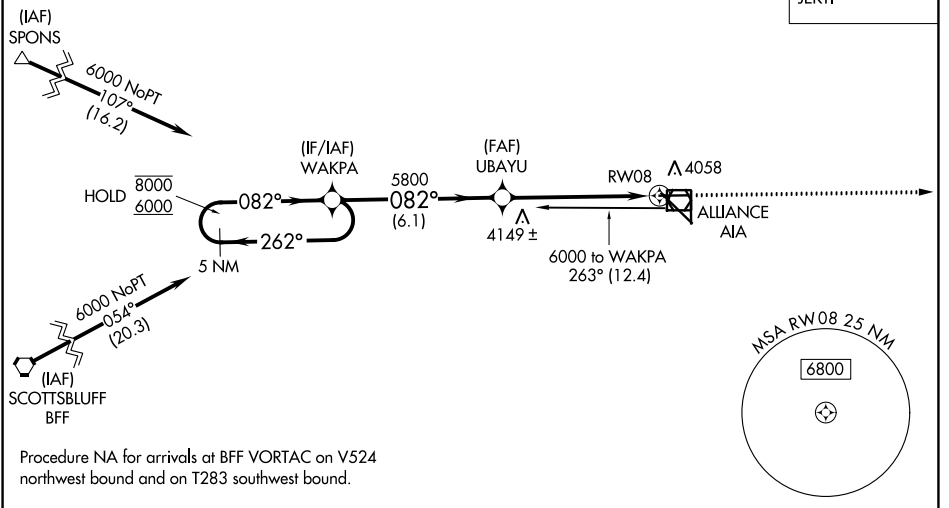
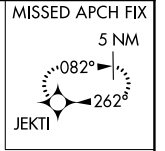
APP CRS	Rwy Idg	<b>6190</b>
<b>082°</b>	TDZE	<b>3931</b>
	Apt Elev	<b>3931</b>

# RNAV (GPS) RWY 8

ALLIANCE MUNI (AIA)

RNP APCH.	MISSED APPROACH: Climb to 5700 direct JEKTI and hold.
-----------	---

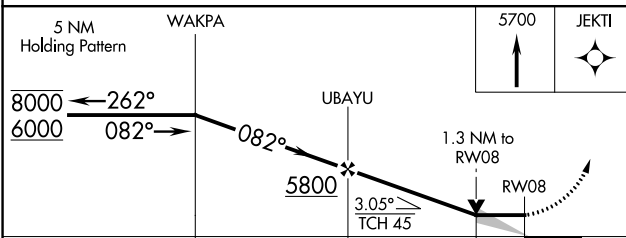
ASOS <b>135.075</b>	DENVER CENTER <b>127.95 338.2</b>	UNICOM <b>123.0 (CTAF) 1</b>
------------------------	--------------------------------------	---------------------------------



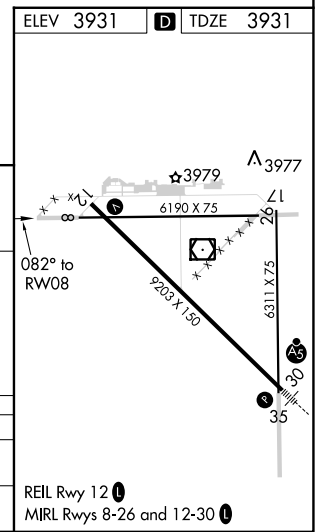
NC-2, 22 FEB 2024 to 21 MAR 2024

NC-2, 22 FEB 2024 to 21 MAR 2024

ELEV 3931	<b>D</b> TDZE 3931
-----------	--------------------



CATEGORY	A	B	C	D
LNVA MDA	4400-1	469 (500-1)	4400-1 $\frac{3}{8}$ 469 (500-1 $\frac{3}{8}$ )	4400-1 $\frac{1}{2}$ 469 (500-1 $\frac{1}{2}$ )
CIRCLING	4460-1 529 (600-1)	4520-1 589 (600-1)	4580-1 $\frac{3}{4}$ 649 (700-1 $\frac{3}{4}$ )	4640-2 $\frac{1}{4}$ 709 (800-2 $\frac{1}{4}$ )



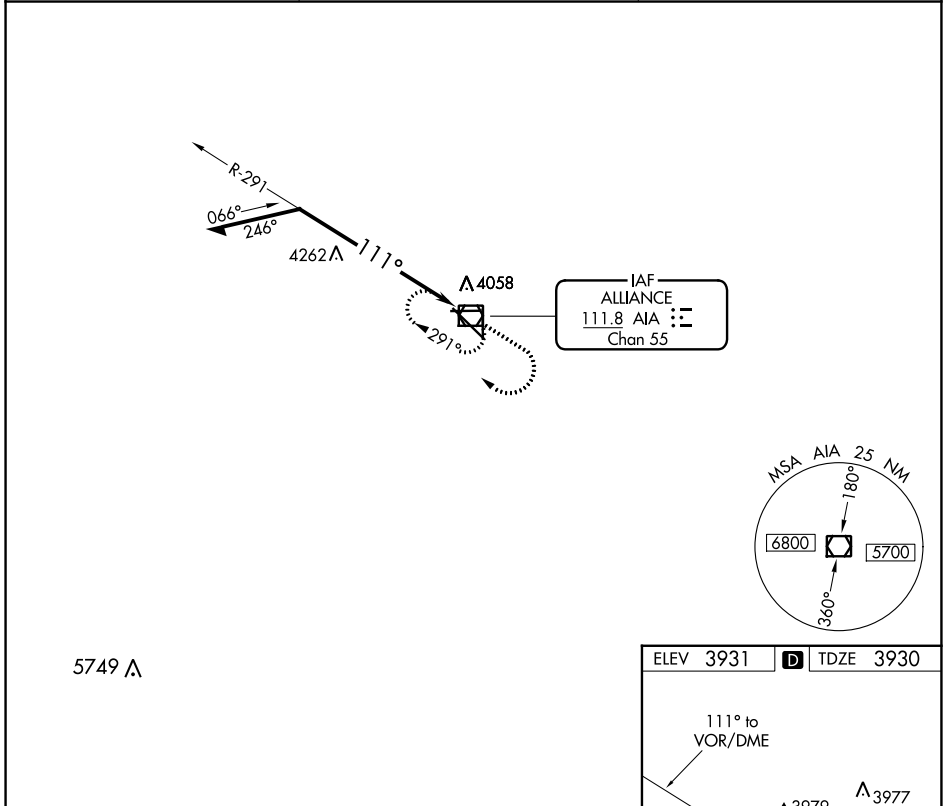
VOR/DME AIA <b>111.8</b> Chan <b>55</b>	APP CRS <b>111°</b>	Rwy Idg TDZE Apt Elev	<b>9202</b> <b>3930</b> <b>3931</b>
---	------------------------	-----------------------------	---

# VOR RWY 12

ALLIANCE MUNI (AIA)

**A** MISSED APPROACH: Climb to 5800 then right turn direct AIA VOR/DME and hold.

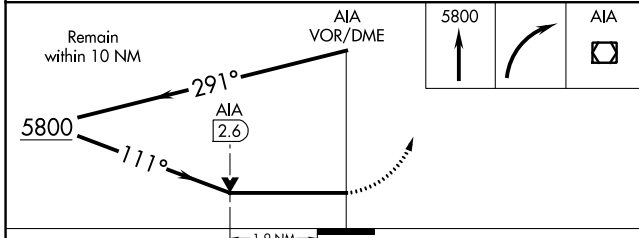
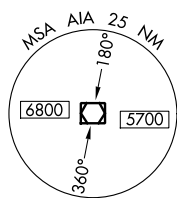
ASOS <b>135.075</b>	DENVER CENTER <b>127.95 338.2</b>	UNICOM <b>123.0 (CTAF) 0</b>
------------------------	--------------------------------------	---------------------------------



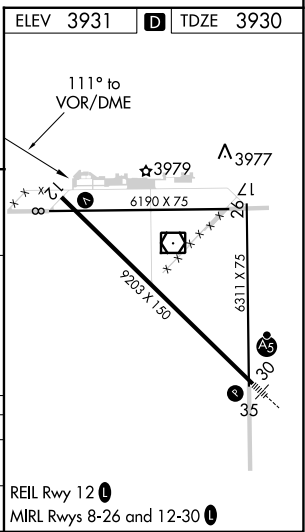
NC-2, 22 FEB 2024 to 21 MAR 2024

NC-2, 22 FEB 2024 to 21 MAR 2024

5749 A



CATEGORY	A	B	C	D
S-12	4580-1 650 (700-1)		4580-1 650 (700-1 7/8)	4580-2 650 (700-2)
CIRCLING	4580-1 649 (700-1)		4580-1 649 (700-1 7/8)	4640-2 709 (800-2 1/4)



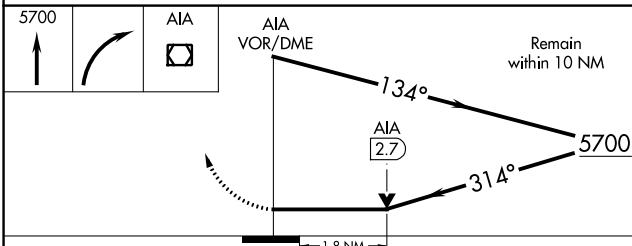
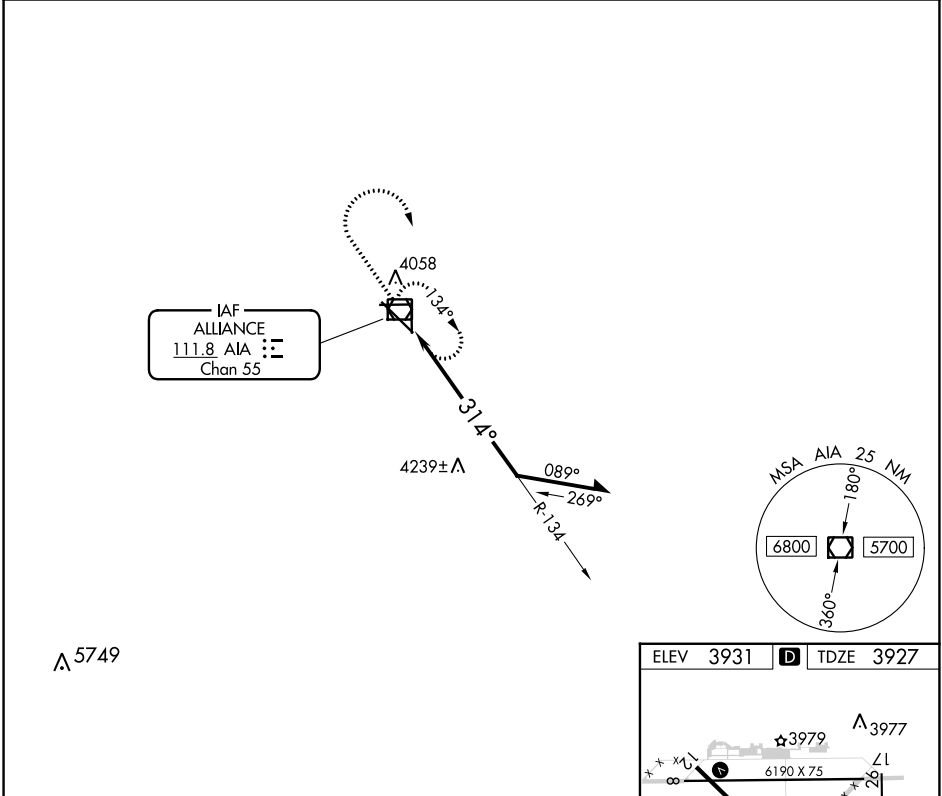
VOR/DME AIA <b>111.8</b> Chan <b>55</b>	APP CRS <b>314°</b>	Rwy Idg <b>9202</b> TDZE <b>3927</b> Apt Elev <b>3931</b>
---	------------------------	---

# VOR RWY 30

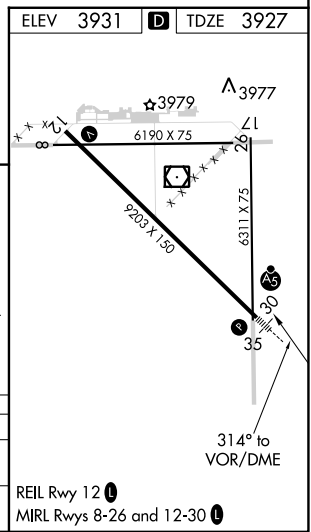
ALLIANCE MUNI (AIA)

<b>▲</b> For inop ALS, increase S-30 Cats A/B visibility to 1 SM and S-30 Cats C/D visibility to 1 1/4 SM.	<b>MALS</b> 	<b>MISSED APPROACH:</b> Climb to 5700 then right turn direct AIA VOR/DME and hold.

ASOS <b>135.075</b>	DENVER CENTER <b>127.95 338.2</b>	UNICOM <b>123.0 (CTAF) <b>l</b></b>
------------------------	--------------------------------------	--



CATEGORY	A	B	C	D
S-30	4540-3/4 613 (700-3/4)		4540-1 1/8 613 (700-1 1/8)	4540-1 1/2 613 (700-1 1/2)
CIRCLING	4540-1 609 (700-1)		4580-1 3/4 649 (700-1 3/4)	4640-2 1/4 709 (800-2 1/4)



NC-2, 22 FEB 2024 to 21 MAR 2024

NC-2, 22 FEB 2024 to 21 MAR 2024



INSTRUMENT APPROACH PROCEDURE CHARTS

**A** IFR ALTERNATE AIRPORT MINIMUMS

Pilots must review the IFR Alternate Minimums Notes to determine alternate airport suitability.

**A**NA designation on the approach chart means that pilots may not use that approach as an alternate due to unmonitored facility, absence of weather reporting service, or lack of adequate navigation coverage. Approaches with the **A**NA designation are not listed in this section. **A** designation on the approach chart indicates that the approach procedure has non-standard minimums (for aircraft other than helicopters) or restrictions (for all users) for its use as an alternate.

Alternate Minima (ref: 14 CFR 91.169)

	Precision Approach	Non-Precision Approach
Standard	<b>600-2</b>	<b>800-2</b>
<b>A</b> Non-Standard or restrictions	As indicated below	As indicated below
Helicopters	For the selected approach: Ceiling: 200' above published ceiling Visibility: the greater of 1 SM visibility or the published visibility	
US Military (USA/USN/USAF)	See Service Regulations	

**Note:** For alternate airport flight planning purposes, precision approach operations include: ILS, PAR, and GLS, and Non-Precision approach operations include: NDB, VOR, LOC, TACAN, LDA, SDF, ASR, RNAV (GPS) and RNAV (RNP).

NAME ALTERNATE MINIMUMS

**ABILENE, KS**

ABILENE  
MUNI (K78).....RNAV (GPS) Rwy 17<sup>1</sup>  
RNAV (GPS) Rwy 35  
VOR-A

Category C, 900-2½.  
<sup>1</sup>NA when local weather not available.

**ALLIANCE, NE**

ALLIANCE MUNI (AIA).....RNAV (GPS) Rwy 8  
RNAV (GPS) Rwy 12  
RNAV (GPS) Rwy 26  
RNAV (GPS) Rwy 30  
VOR Rwy 12  
VOR Rwy 30

NA when local weather not available.  
Category D, 800-2¼.

**AINSWORTH, NE**

AINSWORTH  
RGNL (ANW).....RNAV (GPS) Rwy 13<sup>1</sup>  
RNAV (GPS) Rwy 17<sup>1</sup>  
RNAV (GPS) Rwy 31<sup>1</sup>  
RNAV (GPS) Rwy 35<sup>1</sup>  
VOR Rwy 35<sup>2</sup>

<sup>1</sup>NA when local weather not available.  
<sup>2</sup>Category D, 800-2¼.

NAME ALTERNATE MINIMUMS

**ALBION, NE**

ALBION  
MUNI (BVN).....RNAV (GPS) Rwy 15  
RNAV (GPS) Rwy 33  
NA when local weather not available.

**AUGUSTA, KS**

AUGUSTA  
MUNI (3AU).....RNAV (GPS) Rwy 36  
VOR/DME-A  
NA when local weather not available.

**AURORA, NE**

AURORA MUNI-AL POTTER  
FIELD (AUH).....RNAV (GPS) Rwy 16  
RNAV (GPS) Rwy 34  
VOR-A<sup>1</sup>

NA when local weather not available.  
<sup>1</sup>Category D, 800-2¼.

22 FEB 2024 to 21 MAR 2024

22 FEB 2024 to 21 MAR 2024

NAME ALTERNATE MINIMUMS

**BEATRICE, NE**

BEATRICE MUNI (BIE).....RNAV (GPS) Rwy 14<sup>1</sup>  
RNAV (GPS) Rwy 18<sup>1</sup>  
RNAV (GPS) Rwy 32<sup>1</sup>  
RNAV (GPS) Rwy 36<sup>1</sup>  
VOR Rwy 18<sup>2</sup>  
VOR Rwy 36<sup>1</sup>

NA when local weather not available.  
<sup>1</sup>Category D, 800-2½.  
<sup>2</sup>Categories A, B, 900-2; Category C, 900-2½;  
Category D, 900-2¾.

**BLAIR, NE**

BLAIR EXEC (BTA).....RNAV (GPS) Rwy 13  
RNAV (GPS) Rwy 31

NA when local weather not available.

**BROKEN BOW, NE**

BROKEN BOW MUNI/KEITH  
GLAZE FIELD (BBW).....RNAV (GPS) Rwy 14  
RNAV (GPS) Rwy 32  
VOR Rwy 14  
VOR/DME Rwy 32

NA when local weather not available.

**BURLINGTON, KS**

COFFEY COUNTY (UKL).....RNAV (GPS) Rwy 18  
RNAV (GPS) Rwy 36

NA when local weather not available.  
Category C, 800-2¼.

**CHADRON, NE**

CHADRON MUNI (CDR).....ILS or LOC Rwy 3<sup>1</sup>  
NDB Rwy 21<sup>2</sup>  
RNAV (GPS) Rwy 3<sup>2</sup>  
RNAV (GPS) Rwy 12  
RNAV (GPS) Rwy 21<sup>2</sup>  
RNAV (GPS) Rwy 30

NA when local weather not available.  
<sup>1</sup>LOC, Category D, 1000-3.  
<sup>2</sup>Category D, 1000-3.

**CHANUTE, KS**

CHANUTE MARTIN  
JOHNSON (CNU).....RNAV (GPS) Rwy 36  
VOR-A

NA when local weather not available.

**COFFEYVILLE, KS**

COFFEYVILLE  
MUNI (CFV).....RNAV (GPS) Rwy 17  
RNAV (GPS) Rwy 35<sup>1</sup>

Category D, 800-2½.  
<sup>1</sup>NA when local weather not available.

**COLBY, KS**

SHALZ FLD (CBK).....RNAV (GPS) Rwy 17  
RNAV (GPS) Rwy 35

NA when local weather not available.

NAME ALTERNATE MINIMUMS

**COLDWATER, KS**

COMANCHE  
COUNTY (3K8).....RNAV (GPS) Rwy 17  
RNAV (GPS) Rwy 35

NA when local weather not available.  
Category C, 900-2½.

**COLUMBUS, NE**

COLUMBUS  
MUNI (OLU).....VOR Rwy 14  
Category D, 800-2¼.

**CONCORDIA, KS**

BLOSSER MUNI (CNK).....RNAV (GPS) Rwy 18  
RNAV (GPS) Rwy 36

NA when local weather not available.

**DODGE CITY, KS**

DODGE CITY  
RGNL (DDC).....ILS or LOC Rwy 14<sup>13</sup>  
RNAV (GPS) Rwy 2<sup>3</sup>  
RNAV (GPS) Rwy 14<sup>2</sup>  
RNAV (GPS) Rwy 20<sup>3</sup>  
RNAV (GPS) Rwy 32<sup>23</sup>  
VOR Rwy 14<sup>23</sup>  
VOR Rwy 32<sup>23</sup>

<sup>1</sup>LOC, Category D, 800-2¼.  
<sup>2</sup>Category D, 800-2¼.  
<sup>3</sup>NA when local weather not available.

**ELKHART, KS**

ELKHART-MORTON  
COUNTY (EHA).....RNAV (GPS) Rwy 4  
RNAV (GPS) Rwy 17  
RNAV (GPS) Rwy 22  
RNAV (GPS) Rwy 35

NA when local weather not available.

**ELLSWORTH, KS**

ELLSWORTH  
MUNI (9K7).....RNAV (GPS) Rwy 17  
RNAV (GPS) Rwy 35

NA when local weather not available.  
Category C, 1000-2¾.

**FREMONT, NE**

FREMONT MUNI (FET).....RNAV (GPS) Rwy 14  
RNAV (GPS) Rwy 32

NA when local weather not available.  
Category C, 900-2½.

22 FEB 2024 to 21 MAR 2024

22 FEB 2024 to 21 MAR 2024

NAME ALTERNATE MINIMUMS

**GARDEN CITY, KS**

GARDEN CITY  
 RGNL (GCK).....ILS or LOC Rwy 35  
   RNAV (GPS) Rwy 12  
   RNAV (GPS) Rwy 17  
   RNAV (GPS) Rwy 30  
   RNAV (GPS) Rwy 35  
   VOR/DME Rwy 17  
   VOR/DME Rwy 30  
   VOR Rwy 35

NA when local weather not available.

**GOODLAND, KS**

RENNER FLD/GOODLAND  
 MUNI (GLD).....ILS or LOC Rwy 30  
   RNAV (GPS) Rwy 12  
   RNAV (GPS) Rwy 23  
   RNAV (GPS) Rwy 30  
   VOR Rwy 30

NA when local weather not available.

**GORDON, NE**

GORDON MUNI (GRN).....NDB Rwy 22  
 Categories A, B, 900-2.

**GRAND ISLAND, NE**

CENTRAL NEBRASKA  
 RGNL (GRI).....ILS or LOC Rwy 35<sup>1</sup>  
   LOC/DME BC Rwy 17<sup>2</sup>  
   RNAV (GPS) Rwy 13<sup>2</sup>  
   RNAV (GPS) Rwy 17<sup>2</sup>  
   RNAV (GPS) Rwy 31<sup>2</sup>  
   RNAV (GPS) Rwy 35<sup>2</sup>  
   VOR Rwy 13<sup>2</sup>  
   VOR Rwy 17<sup>2</sup>  
   VOR/DME Rwy 31<sup>2</sup>  
   VOR/DME Rwy 35<sup>2</sup>

NA when local weather not available.

<sup>1</sup>LOC, Category D, 800-2¼.

<sup>2</sup>Category D, 800-2¼.

**GRANT, NE**

GRANT MUNI (GGF).....NDB Rwy 33  
   RNAV (GPS) Rwy 15  
   RNAV (GPS) Rwy 33  
   VOR/DME Rwy 15

NA when local weather not available.

**GREAT BEND, KS**

GREAT BEND  
 MUNI (GBD) .....RNAV (GPS) Rwy 17  
   RNAV (GPS) Rwy 35

NA when local weather not available.

Category D, 800-2½.

**HASTINGS, NE**

HASTINGS MUNI (HSI).....RNAV (GPS) Rwy 4  
   RNAV (GPS) Rwy 14  
   RNAV (GPS) Rwy 32  
   VOR Rwy 32

NA when local weather not available.

NAME ALTERNATE MINIMUMS

**HAYS, KS**

HAYS RGNL (HYS).....RNAV (GPS) Rwy 4  
   RNAV (GPS) Rwy 16  
   RNAV (GPS) Rwy 22  
   RNAV (GPS) Rwy 34  
   VOR Rwy 16  
   VOR Rwy 34  
   VOR/DME Rwy 16  
   VOR/DME Rwy 34

NA when local weather not available.

Category D, 800-2¼.

**HEBRON, NE**

HEBRON MUNI (HJH).....RNAV (GPS) Rwy 12  
 NA when local weather not available.

**HILL CITY, KS**

HILL CITY MUNI (HLC).....RNAV (GPS) Rwy 18  
   RNAV (GPS) Rwy 36

NA when local weather not available.

**HOLDREGE, NE**

BREWSTER FLD (HDE).....RNAV (GPS) Rwy 18<sup>1</sup>  
   RNAV (GPS) Rwy 36<sup>1</sup>  
   VOR-A<sup>2</sup>

NA when local weather not available.

<sup>1</sup>Category D, 800-2¼.

<sup>2</sup>Category C, 800-2¼; Category D, 800-2½.

**HUGOTON, KS**

HUGOTON  
 MUNI (HQG).....RNAV (GPS) Rwy 2  
   RNAV (GPS) Rwy 20

NA when local weather not available.

Category C, 900-2½.

**HUTCHINSON, KS**

HUTCHINSON  
 RGNL (HUT).....ILS or LOC Rwy 13<sup>12</sup>  
   LOC BC Rwy 31<sup>13</sup>  
   NDB Rwy 13<sup>3</sup>  
   RNAV (GPS) Rwy 4<sup>4</sup>  
   RNAV (GPS) Rwy 13<sup>34</sup>  
   RNAV (GPS) Rwy 31<sup>3</sup>  
   RNAV (GPS) Rwy 35<sup>4</sup>

<sup>1</sup>NA when control tower closed.

<sup>2</sup>ILS, Category C, 700-2, Category D, 1200-3;

LOC, Category D, 1200-3.

<sup>3</sup>Category D, 1200-3.

<sup>4</sup>NA when local weather not available.

**IMPERIAL, NE**

IMPERIAL MUNI (IML).....RNAV (GPS) Rwy 13  
   RNAV (GPS) Rwy 31

NA when local weather not available.

NAME ALTERNATE MINIMUMS

**INDEPENDENCE, KS**

INDEPENDENCE  
MUNI (IDP).....RNAV (GPS) Rwy 17  
RNAV (GPS) Rwy 35  
VOR-A<sup>1</sup>

Category D, 900-2 $\frac{3}{4}$ .  
<sup>1</sup>NA when local weather not available.

**JOHNSON, KS**

STANTON COUNTY  
MUNI (JHN).....RNAV (GPS) Rwy 17  
RNAV (GPS) Rwy 35

NA when local weather not available.  
Category D, 800-2 $\frac{1}{4}$ .

**KEARNEY, NE**

KEARNEY  
RGNL (EAR).....RNAV (GPS) Rwy 13  
RNAV (GPS) Rwy 18<sup>1</sup>  
RNAV (GPS) Rwy 36<sup>1</sup>  
VOR Rwy 18<sup>1</sup>

NA when local weather not available.  
<sup>1</sup>Category D, 800-2 $\frac{1}{4}$ .

**KIMBALL, NE**

KIMBALL MUNI/ROBERT E ARRAJ  
FLD (IBM).....RNAV (GPS) Rwy 10  
RNAV (GPS) Rwy 28

NA when local weather not available.

**LARNED, KS**

LARNED-PAWNEE  
COUNTY (LQR).....RNAV (GPS) Rwy 17  
RNAV (GPS) Rwy 35

NA when local weather not available.

**LAWRENCE, KS**

LAWRENCE RGNL (LWC).....ILS or LOC Rwy 33<sup>1</sup>  
RNAV (GPS) Rwy 15<sup>2</sup>  
RNAV (GPS) Rwy 33<sup>2</sup>  
VOR/DME-A<sup>2</sup>

NA when local weather not available.  
<sup>1</sup>LOC, Category C, 800-2 $\frac{1}{4}$ .  
<sup>2</sup>Category C, 800-2 $\frac{1}{4}$ .

**LEXINGTON, NE**

JIM KELLY FLD (LXN).....RNAV (GPS) Rwy 32  
NA when local weather not available.

**LIBERAL, KS**

LIBERAL MID-AMERICA  
RGNL (LBL).....ILS or LOC Rwy 35  
RNAV (GPS) Rwy 4<sup>1</sup>  
RNAV (GPS) Rwy 17<sup>1</sup>  
RNAV (GPS) Rwy 22<sup>1</sup>  
RNAV (GPS) Rwy 35

NA when local weather not available.  
<sup>1</sup>Category C, 800-2 $\frac{1}{4}$ ; Category D, 800-2 $\frac{1}{2}$ .

NAME ALTERNATE MINIMUMS

**LINCOLN, NE**

LINCOLN (LNK).....ILS Y or LOC Y Rwy 18<sup>12</sup>  
ILS Y or LOC Y Rwy 36<sup>12</sup>  
RNAV (GPS) Rwy 14<sup>3</sup>  
RNAV (GPS) Rwy 17<sup>3</sup>  
RNAV (GPS) Rwy 18<sup>3</sup>  
RNAV (GPS) Rwy 32<sup>3</sup>  
RNAV (GPS) Rwy 35<sup>3</sup>  
RNAV (GPS) Rwy 36<sup>3</sup>  
VOR Rwy 17<sup>3</sup>  
VOR Y Rwy 18<sup>3</sup>

NA when local weather not available.  
<sup>1</sup>NA when control tower closed.  
<sup>2</sup>LOC, Category E, 900-3.  
<sup>3</sup>Category D, 800-2 $\frac{1}{4}$ .

**LYONS, KS**

LYONS-RICE COUNTY  
MUNI (LYO).....RNAV (GPS) Rwy 17  
RNAV (GPS) Rwy 35  
VOR-A

NA when local weather not available.

**MANHATTAN, KS**

MANHATTAN  
RGNL (MHK).....ILS or LOC Rwy 3<sup>1</sup>  
RNAV (GPS) Rwy 3<sup>2</sup>  
RNAV (GPS) Rwy 21<sup>2</sup>  
VOR Rwy 3<sup>2</sup>  
VOR-F<sup>2</sup>

NA when local weather not available.  
<sup>1</sup>LOC, Category C, 900-2 $\frac{1}{2}$ ; Category D, 900-2 $\frac{3}{4}$ .  
<sup>2</sup>Category C, 900-2 $\frac{1}{2}$ ; Category D, 900-2 $\frac{1}{4}$ .

**MARYSVILLE, KS**

MARYSVILLE  
MUNI (MYZ).....RNAV (GPS) Rwy 16  
NA when local weather not available.  
Categories A, B, 900-2; Category C, 900-2 $\frac{1}{4}$ .

**MC COOK, NE**

MC COOK BEN NELSON  
RGNL (MCK).....ILS or LOC/DME Rwy 12<sup>1</sup>  
RNAV (GPS) Rwy 12<sup>2</sup>  
RNAV (GPS) Rwy 22<sup>2</sup>  
RNAV (GPS) Rwy 30<sup>2</sup>  
VOR Rwy 30<sup>2</sup>

NA when local weather not available.  
<sup>1</sup>LOC, Category C 800-2 $\frac{1}{4}$ .  
<sup>2</sup>Category C 800-2 $\frac{1}{4}$ .

**NEBRASKA CITY, NE**

NEBRASKA CITY  
MUNI (AFK).....NDB Rwy 15  
NDB Rwy 33  
RNAV (GPS) Rwy 15  
RNAV (GPS) Rwy 33

NA when local weather not available.

22 FEB 2024 to 21 MAR 2024

22 FEB 2024 to 21 MAR 2024

NAME ALTERNATE MINIMUMS

**NEWTON, KS**

NEWTON-CITY-COUNTY (EWK).....ILS or LOC Rwy 17  
RNAV (GPS) Rwy 17  
RNAV (GPS) Rwy 35

NA when local weather not available.

**NORFOLK, NE**

NORFOLK RGNL/KARL STEFAN MEML  
FLD (OFK).....ILS or LOC Rwy 2<sup>1</sup>  
RNAV (GPS) Rwy 2<sup>2</sup>  
RNAV (GPS) Rwy 14<sup>2</sup>  
RNAV (GPS) Rwy 20<sup>2</sup>  
RNAV (GPS) Rwy 32<sup>2</sup>  
VOR Rwy 14<sup>2</sup>  
VOR Rwy 32<sup>2</sup>

NA when local weather not available.

<sup>1</sup>LOC, Category D, 800-2½.

<sup>2</sup>Category D, 800-2½.

**NORTH PLATTE, NE**

NORTH PLATTE RGNL/LEE BIRD  
FLD (LBF).....ILS or LOC Rwy 30<sup>1</sup>  
RNAV (GPS) Rwy 12<sup>2</sup>  
RNAV (GPS) Rwy 30<sup>2</sup>  
RNAV (GPS) Rwy 35<sup>2</sup>  
VOR Rwy 35<sup>3</sup>

<sup>1</sup>LOC, Category D, 800-2½.

<sup>2</sup>Category D, 800-2½.

<sup>3</sup>Category C, 800-2¼; Category D, 800-2½.

**NORTON, KS**

NORTON MUNI (NRN).....RNAV (GPS) Rwy 16  
RNAV (GPS) Rwy 34

NA when local weather not available.

**OAKLEY, KS**

OAKLEY  
MUNI (OEL).....RNAV (GPS) Rwy 34  
Category C, 800-2¼.

NA when local weather not available.

**OBERLIN, KS**

OBERLIN MUNI (OIN).....NDB Rwy 35  
RNAV (GPS) Rwy 17  
RNAV (GPS) Rwy 35

NA when local weather not available.

**OGALLALA, NE**

SEARLE FLD (OGA).....RNAV (GPS) Rwy 8  
RNAV (GPS) Rwy 13  
RNAV (GPS) Rwy 26  
RNAV (GPS) Rwy 31  
VOR Rwy 26

NA when local weather not available.

NAME ALTERNATE MINIMUMS

**OLATHE, KS**

NEW CENTURY  
AIRCENTER (IXD).....RNAV (GPS) Rwy 4  
RNAV (GPS) Rwy 18  
RNAV (GPS) Rwy 22  
RNAV (GPS) Rwy 36

NA when local weather not available.

**OMAHA, NE**

EPPLEY  
AIRFIELD (OMA).....ILS or LOC Rwy 14L<sup>1</sup>  
ILS or LOC Rwy 14R<sup>1</sup>  
ILS or LOC Rwy 18<sup>1</sup>  
ILS or LOC Rwy 32L<sup>1</sup>  
ILS or LOC Rwy 32R<sup>1</sup>  
ILS or LOC Rwy 36<sup>1</sup>  
RNAV (GPS) Y Rwy 14L<sup>2</sup>  
RNAV (GPS) Y Rwy 14R<sup>2</sup>  
RNAV (GPS) Y Rwy 18<sup>2</sup>  
RNAV (GPS) Y Rwy 32L<sup>2</sup>  
RNAV (GPS) Y Rwy 32R<sup>2</sup>  
RNAV (GPS) Y Rwy 36<sup>2</sup>

<sup>1</sup>LOC, Categories C, D, 1100-3.

<sup>2</sup>Categories C, D, 1100-3.

MILLARD (MLE).....RNAV (GPS) Rwy 12  
RNAV (GPS) Rwy 30

NA when local weather not available.

**O'NEILL, NE**

THE O'NEILL MUNI-JOHN L BAKER  
FLD (ONL).....RNAV (GPS) Rwy 13  
RNAV (GPS) Rwy 31  
VOR Rwy 13<sup>1</sup>  
VOR Rwy 31<sup>1</sup>

NA when local weather not available.

<sup>1</sup>Category D, 900-2½.

**ORD, NE**

EVELYN SHARP FLD (ODX).....NDB Rwy 13<sup>1</sup>  
RNAV (GPS) Rwy 13  
RNAV (GPS) Rwy 31

NA when local weather not available.

<sup>1</sup>Categories A, B, 1000-2.

**OTTAWA, KS**

OTTAWA  
MUNI (OWI).....RNAV (GPS) Rwy 17  
RNAV (GPS) Rwy 35

NA when local weather not available.

Category C, 800-2¼.

**PARSONS, KS**

TRI-CITY (PPF).....RNAV (GPS) Rwy 17  
RNAV (GPS) Rwy 35  
VOR Rwy 17

NA when local weather not available.

22 FEB 2024 to 21 MAR 2024

22 FEB 2024 to 21 MAR 2024

NAME ALTERNATE MINIMUMS

**PITTSBURG, KS**

ATKINSON MUNI (PTS).....RNAV (GPS) Rwy 4<sup>1</sup>  
RNAV (GPS) Rwy 17<sup>2</sup>  
RNAV (GPS) Rwy 22<sup>1</sup>  
RNAV (GPS) Rwy 35<sup>2</sup>

<sup>1</sup>NA when local weather not available.  
<sup>2</sup>Category D, 800-2½.

**PLATTSMOUTH, NE**

PLATTSMOUTH MUNI/DOUGLAS V DUEY  
FLD (PMV).....NDB Rwy 34  
RNAV (GPS) Rwy 16  
RNAV (GPS) Rwy 34

NA when local weather not available.

**PRATT, KS**

PRATT RGNL (PTT).....RNAV (GPS) Rwy 17  
RNAV (GPS) Rwy 35

NA when local weather not available.

**RUSSELL, KS**

RUSSEL MUNI (RSL).....RNAV (GPS) Rwy 17  
RNAV (GPS) Rwy 35  
VOR/DME-A

NA when local weather not available.  
Category C, 800-2¼.

**SALINA, KS**

SALINA RGNL (SLN).....ILS or LOC Rwy 35<sup>12</sup>  
NDB Rwy 35<sup>3</sup>  
RNAV (GPS) Rwy 12<sup>4</sup>  
RNAV (GPS) Rwy 30<sup>4</sup>  
VOR Rwy 17<sup>45</sup>

<sup>1</sup>LOC, NA when control tower closed.  
<sup>2</sup>LOC, Category E, 800-2¼.  
<sup>3</sup>NA when control tower closed.  
<sup>4</sup>NA when local weather not available.  
<sup>5</sup>Category E, 800-2¼.

**SAINT FRANCIS, KS**

CHEYENNE COUNTY MUNI (SYF).....NDB-A  
RNAV (GPS) Rwy 14  
RNAV (GPS) Rwy 32

NA when local weather not available.

**SCOTT CITY, KS**

SCOTT CITY  
MUNI (TQK).....RNAV (GPS) Rwy 17  
RNAV (GPS) Rwy 35

NA when local weather not available.  
Category D, 800-2¼.

NAME ALTERNATE MINIMUMS

**SCOTTSBLUFF, NE**

WESTERN NEBRASKA RGNL/WILLIAM B  
HEILIG FLD (BFF).....ILS or LOC Rwy 30<sup>1</sup>  
ILS or LOC/DME Rwy 12<sup>1</sup>  
RNAV (GPS) Rwy 5<sup>2</sup>  
RNAV (GPS) Rwy 12<sup>2</sup>  
RNAV (GPS) Rwy 23<sup>2</sup>  
RNAV (GPS) Rwy 30<sup>2</sup>  
VOR/DME Rwy 5<sup>2</sup>  
VOR or TACAN Rwy 23<sup>2</sup>

NA when local weather not available.

<sup>1</sup>LOC, Category D, 800-2½.  
<sup>2</sup>Category D, 800-2½.

**SIDNEY, NE**

SIDNEY MUNI/LLOYD W CARR  
FLD (SNY).....RNAV (GPS) Rwy 13  
RNAV (GPS) Rwy 31  
VOR/DME Rwy 13  
VOR/DME Rwy 31

NA when local weather not available.

**SYRACUSE, KS**

SYRACUSE-HAMILTON COUNTY  
MUNI (3K3).....RNAV (GPS) Rwy 18<sup>1</sup>  
RNAV (GPS) Rwy 36<sup>2</sup>

NA when local weather not available.  
<sup>1</sup>Categories A, B, 800-2¼; Category C, 900-2½.  
<sup>2</sup>Category C, 900-2½.

**TEKAMAH, NE**

TEKAMAH MUNI (TQE).....RNAV (GPS) Rwy 15  
RNAV (GPS) Rwy 33

Category C, 800-2¼.

**THEDFORD, NE**

THOMAS COUNTY (TIF).....RNAV (GPS) Rwy 11  
RNAV (GPS) Rwy 29

NA when local weather not available.

**TOPEKA, KS**

TOPEKA RGNL (FOE).....ILS or LOC Rwy 31<sup>12</sup>  
RNAV (GPS) Rwy 3  
RNAV (GPS) Rwy 13  
RNAV (GPS) Rwy 21  
RNAV (GPS) Rwy 31

NA when local weather not available.

<sup>1</sup>LOC, Category E, 800-2¼.  
<sup>2</sup>NA when control tower closed.

**PHILIP BILLARD**

MUNI (TOP).....ILS or LOC Rwy 13  
NA when control tower closed.  
ILS, Category C, 800-2.

22 FEB 2024 to 21 MAR 2024

22 FEB 2024 to 21 MAR 2024

24025

NAME ALTERNATE MINIMUMS

**ULYSSES, KS**

ULYSSES (ULS).....RNAV (GPS) Rwy 12  
RNAV (GPS) Rwy 17  
RNAV (GPS) Rwy 30

NA when local weather not available.  
Category C, 900-2½.

**VALENTINE, NE**

MILLER FLD (VTN).....NDB Rwy 32  
RNAV (GPS) Rwy 3<sup>1</sup>  
RNAV (GPS) Rwy 14  
RNAV (GPS) Rwy 21  
RNAV (GPS) Rwy 32

Category B, 1000-2.  
<sup>1</sup>NA when local weather not available.

**WAHOO, NE**

WAHOO  
MUNI (AHQ).....RNAV (GPS) Rwy 20  
NA when local weather not available.

**WAYNE, NE**

WAYNE MUNI/STAN MORRIS  
FLD (LCG).....RNAV (GPS) Rwy 18  
RNAV (GPS) Rwy 23  
NA when local weather not available.

**WICHITA, KS**

COLONEL JAMES  
JABARA (AAO).....ILS or LOC Rwy 18<sup>1</sup>  
RNAV (GPS) Rwy 18<sup>2</sup>  
RNAV (GPS) Rwy 36<sup>2</sup>  
RNAV (GPS)-E<sup>2</sup>

NA when local weather not available.  
<sup>1</sup>LOC, Category D, 800-2½.  
<sup>2</sup>Category D, 800-2½.

WICHITA DWIGHT D EISENHOWER

NL (ICT).....ILS or LOC Rwy 1L<sup>1</sup>  
ILS or LOC Rwy 1R<sup>1</sup>  
ILS or LOC Rwy 19L<sup>2</sup>  
ILS or LOC Rwy 19R<sup>1</sup>  
NDB Rwy 1R<sup>3,4</sup>  
RNAV (GPS) Rwy 1R<sup>5</sup>  
VOR Rwy 14<sup>6</sup>

<sup>1</sup>ILS, Category E, 700-2¼;  
LOC Category E, 800-2¼.  
<sup>2</sup>ILS, Categories C, D, 700-2; Category E, 700- 2¼;  
LOC, Category E, 800-2¼.  
<sup>3</sup>NA when local weather not available.  
<sup>4</sup>Categories C, D, 1200-2.  
<sup>5</sup>Category E, 800-2¼.  
<sup>6</sup>Categories A, B, 900-2; Category C, 900-2¼;  
Category D, 900-3.

**WINFIELD/ARKANSAS CITY, KS**

STROTHER  
FLD (WLD).....RNAV (GPS) Rwy 35  
NA when local weather not available.

NAME ALTERNATE MINIMUMS

**YORK, NE**

YORK MUNI (JYR).....RNAV (GPS) Rwy 17  
RNAV (GPS) Rwy 35

NA when local weather not available.

22 FEB 2024 to 21 MAR 2024

22 FEB 2024 to 21 MAR 2024

24025

M7