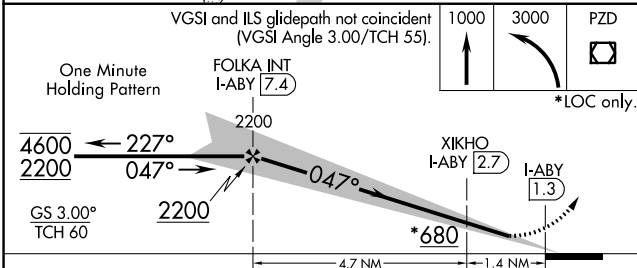
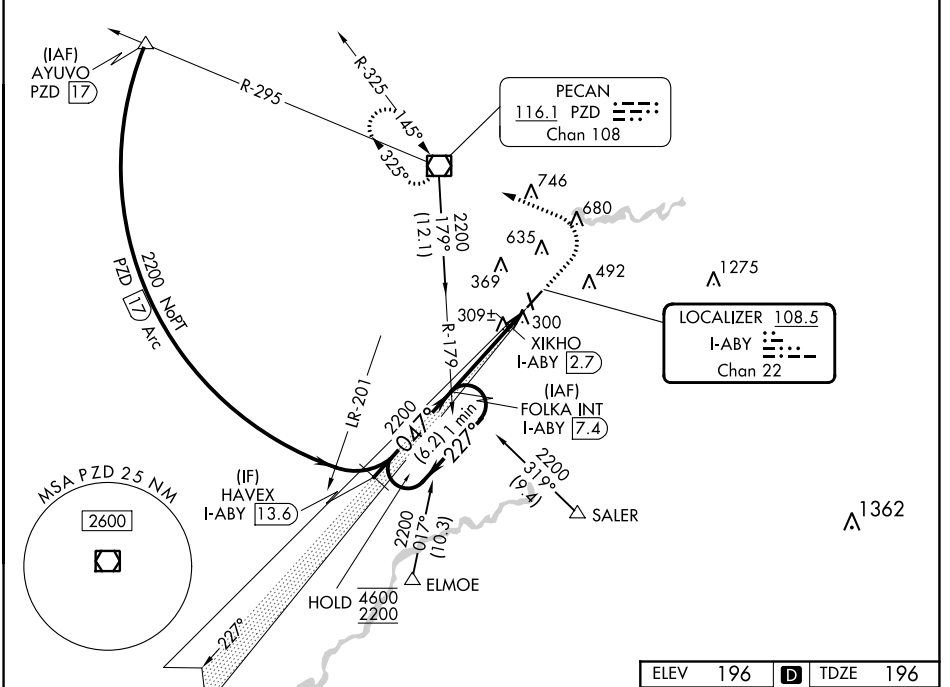


LOC/DME I-ABY <b>108.5</b> Chan <b>22</b>	APP CRS <b>047°</b>	Rwy Idg <b>6601</b> TDZE <b>196</b> Apt Elev <b>196</b>
---	------------------------	---

# ILS or LOC RWY 5

SOUTHWEST GEORGIA RGNL (ABY)

From ELMOE and SALER: RNAV-1 GPS required.		MALSR 	MISSED APPROACH: Climb to 1000 then climbing left turn to 3000 direct PZD VOR/DME and hold.	
 For inop ALS, increase S-LOC 5 Cats C/D visibility to 1½ SM and XIKHO fix minimums S-LOC 5 Cats C/D visibility to RVR 5500.				
ATIS <b>133.05</b>	JACKSONVILLE CENTER <b>125.75 363.075</b>	ALBANY TOWER * <b>120.25 (CTAF) 0336.4</b>	GND CON <b>121.9 348.6</b>	UNICOM <b>122.95</b>



ELEV 196		TDZE 196
HIRL Rwy 5-23 MIRL Rwy 17-35 REIL Rwy 35 REIL Rws 17 and 23		
FAF to MAP 6.1 NM		
Knots	60	90 120 150 180
Min:Sec	6:06	4:04 3:03 2:26 2:02

CATEGORY	A	B	C	D
S-ILS 5		396/24	200 (200-½)	
S-LOC 5	680/24	484 (500-½)	680/50	484 (500-1)
CIRCLING	680-1	484 (500-1)	940-2¼ 744 (800-2¼)	940-2½ 744 (800-2½)
XIKHO FIX MINIMUMS (DME REQUIRED)				
S-LOC 5	560/24	364 (400-½)	560/35	364 (400-¾)
CIRCLING	640-1 444 (500-1)	660-1 464 (500-1)	940-2¼ 744 (800-2¼)	940-2½ 744 (800-2½)

SE-4, 22 FEB 2024 to 21 MAR 2024

SE-4, 22 FEB 2024 to 21 MAR 2024

WAAS CH <b>48815</b> <b>W17A</b>	APP CRS <b>167°</b>	Rwy Idg <b>5219</b> TDZE <b>196</b> Apt Elev <b>196</b>
--	------------------------	---

# RNAV (GPS) RWY 17

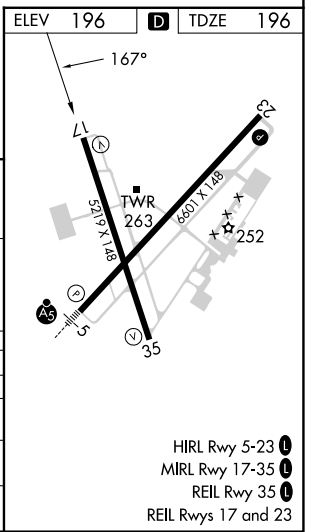
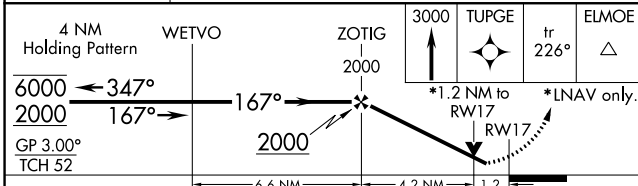
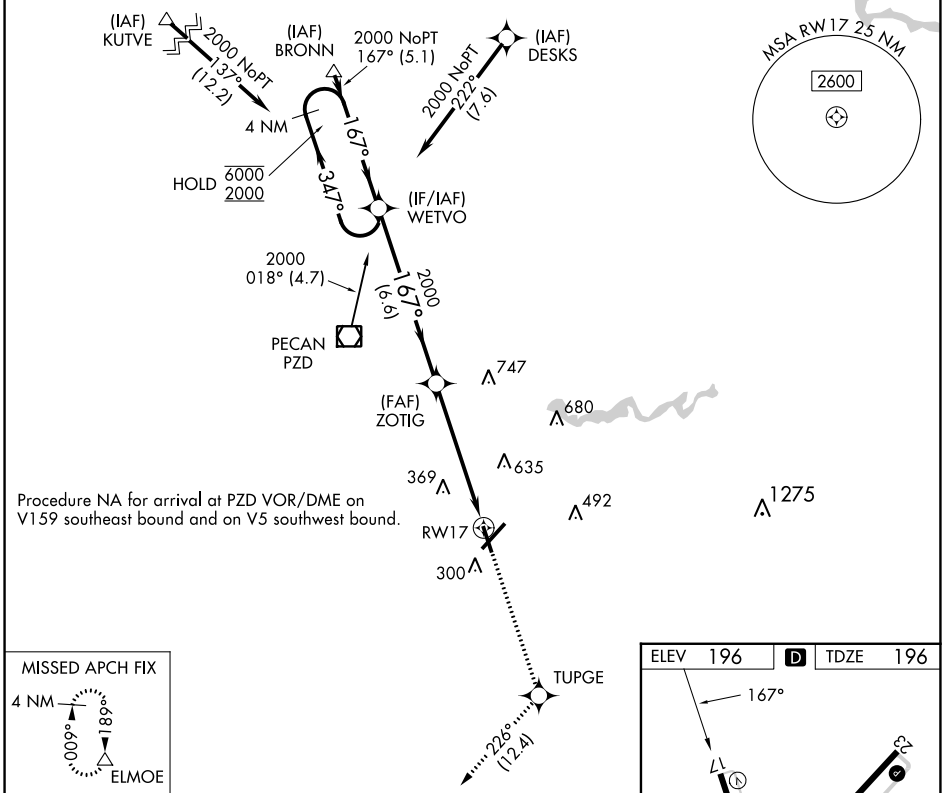
SOUTHWEST GEORGIA RGNL (ABY)

RNP APCH.

▼ Rwy 17 helicopter visibility reduction below 3/4 SM NA. For uncompensated Baro-VNAV systems, LNAV/VNAV NA below -7°C or above 54°C.

MISSED APPROACH: Climb to 3000 direct TUPGE and on track 226° to ELMOE and hold.

ATIS <b>133.05</b>	JACKSONVILLE CENTER <b>125.75 363.075</b>	ALBANY TOWER * <b>120.25 (CTAF) 0336.4</b>	GND CON <b>121.9 348.6</b>	UNICOM <b>122.95</b>
-----------------------	--	---	-------------------------------	-------------------------



4 NM Holding Pattern	WETVO	ZOTIG	TUPGE	ELMOE
6000 ← 347°	2000	2000	3000	tr 226°
GP 3.00°			*1.2 NM to RWY 17	*LNAV only.
TCH 52				
	6.6 NM	4.2 NM	1.2	
CATEGORY	A	B	C	D
LPV DA		534-1 1/4	338 (400-1 1/4)	
LNAV/VNAV DA		603-1 1/2	407 (500-1 1/2)	
LNAV MDA	640-1	444 (500-1)	640-1 1/4 444 (500-1 1/4)	640-1 1/2 444 (500-1 1/2)
CIRCLING	640-1 444 (500-1)	660-1 464 (500-1)	940-2 1/4 744 (800-2 1/4)	940-2 1/2 744 (800-2 1/2)

SE-4, 22 FEB 2024 to 21 MAR 2024

SE-4, 22 FEB 2024 to 21 MAR 2024

- HIRL Rwy 5-23
- MIRL Rwy 17-35
- REIL Rwy 35
- REIL Rwy 17 and 23

ALBANY, GEORGIA

AL-8 (FAA)

23334

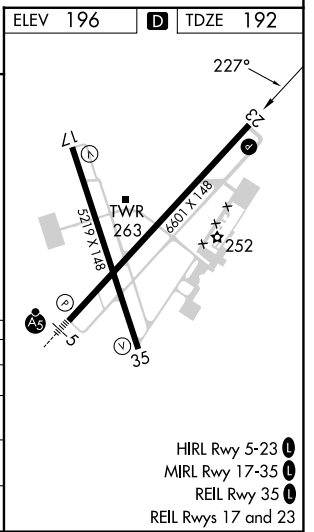
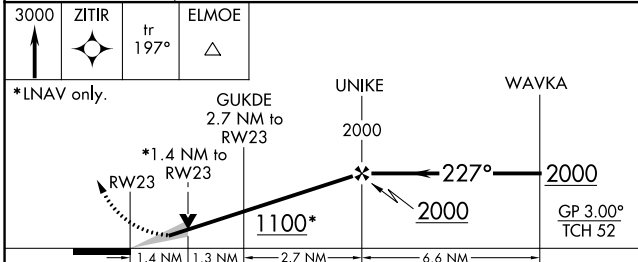
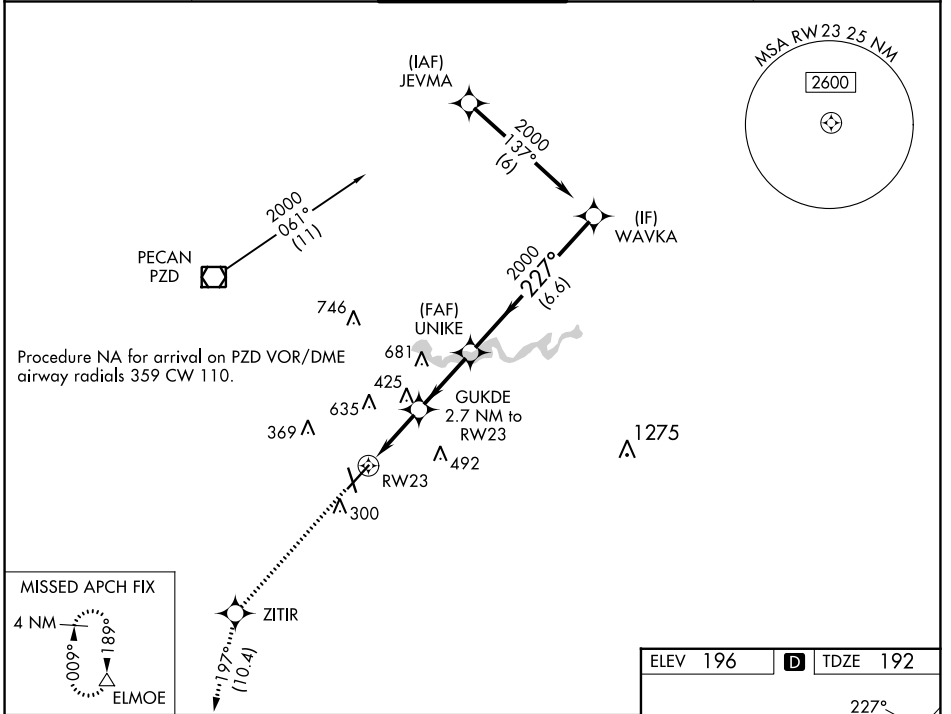
WAAS CH <b>53613</b> <b>W23A</b>	APP CRS <b>227°</b>	Rwy Idg <b>6601</b> TDZE <b>192</b> Apt Elev <b>196</b>
--	------------------------	---

# RNAV (GPS) RWY 23

SOUTHWEST GEORGIA RGNL (ABY)

RNP APCH.   
 ▼ For uncompensated Baro-VNAV systems, LNAV/VNAV NA below -7°C or above 54°C.   
 MISSED APPROACH: Climb to 3000 direct ZITIR and on track 197° to ELMOE and hold.

ATIS <b>133.05</b>	JACKSONVILLE CENTER <b>125.75 363.075</b>	ALBANY TOWER * <b>120.25 (CTAF) 0336.4</b>	GND CON <b>121.9 348.6</b>	UNICOM <b>122.95</b>
-----------------------	--	---	-------------------------------	-------------------------



CATEGORY	A	B	C	D
LPV DA		531-1¼	339 (400-1¼)	
LNAV/VNAV DA		611-1½	419 (500-1½)	
LNAV MDA	680-1	488 (500-1)	680-1¼ 488 (500-1¼)	680-1½ 488 (500-1½)
CIRCLING	680-1	484 (500-1)	940-2¼ 744 (800-2¼)	940-2½ 744 (800-2½)

ALBANY, GEORGIA  
Amdt 1C 26MAR20

31°32'N-84°12'W

SOUTHWEST GEORGIA RGNL (ABY)  
**RNAV (GPS) RWY 23**

SE-4, 22 FEB 2024 to 21 MAR 2024

SE-4, 22 FEB 2024 to 21 MAR 2024

WAAS CH <b>97415</b> <b>W35A</b>	APP CRS <b>347°</b>	Rwy Idg <b>5219</b> TDZE <b>196</b> Apt Elev <b>196</b>
--	------------------------	---

# RNAV (GPS) RWY 35

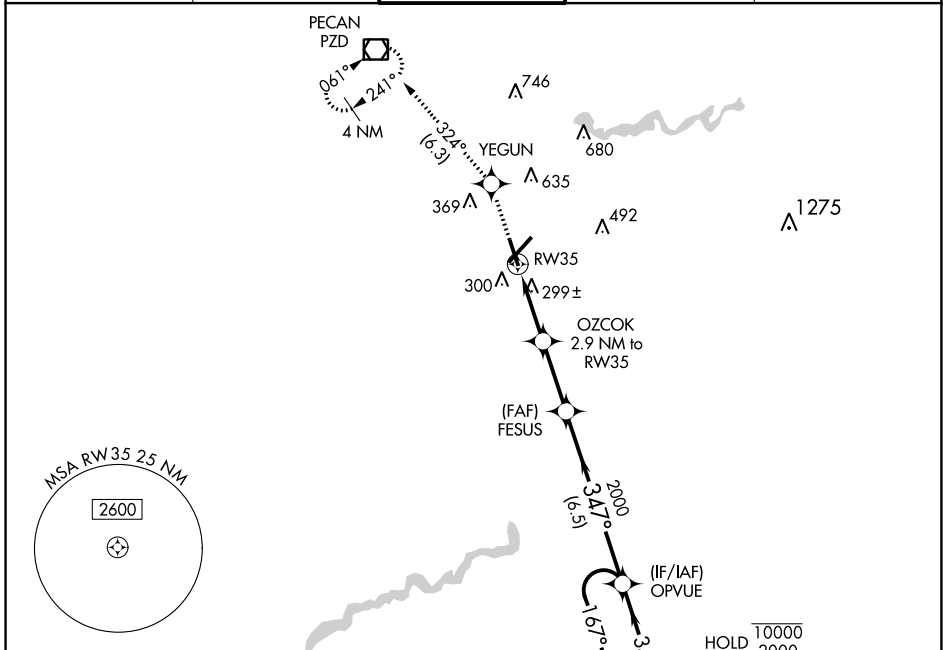
SOUTHWEST GEORGIA RGNL (ABY)

RNP APCH.

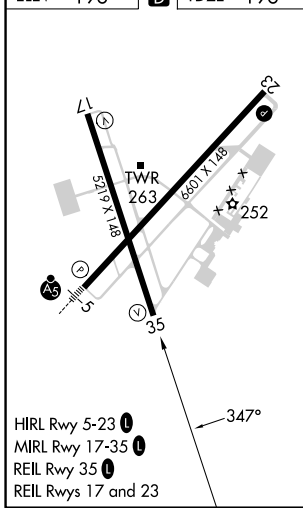
▼ For uncompensated Baro-VNAV systems, LNAV/VNAV NA below -7°C or above 54°C. Rwy 35 helicopter visibility reduction below 3/4 SM NA.

MISSED APPROACH: Climb to 2000 direct YEGUN and on track 324° to PZD VOR/DME and hold.

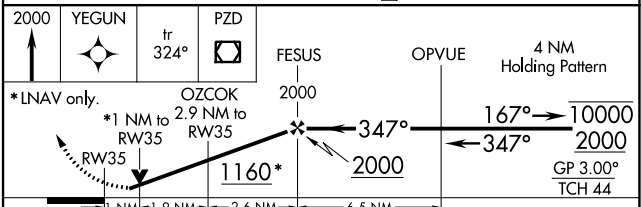
ATIS <b>133.05</b>	JACKSONVILLE CENTER <b>125.75 363.075</b>	ALBANY TOWER * <b>120.25 (CTAF) 0336.4</b>	GND CON <b>121.9 348.6</b>	UNICOM <b>122.95</b>
-----------------------	--	---	-------------------------------	-------------------------



ELEV 196	<b>D</b> TDZE 196
----------	-------------------



ALBANY, GEORGIA  
Amdt 2C 26MAR20



CATEGORY	A	B	C	D
LPV DA		495-1	299 (300-1)	
LNAV/VNAV DA		475-1	279 (300-1)	
LNAV MDA		560-1	364 (400-1)	
<b>C</b> CIRCLING	640-1 444 (500-1)	660-1 464 (500-1)	940-2 1/4 744 (800-2/4)	940-2 1/2 744 (800-2 1/2)

# RNAV (GPS) RWY 35

SE-4, 22 FEB 2024 to 21 MAR 2024

SE-4, 22 FEB 2024 to 21 MAR 2024

WAAS CH <b>78000</b> W05A	APP CRS <b>047°</b>	Rwy Idg <b>6601</b> TDZE <b>196</b> Apt Elev <b>196</b>
---------------------------------	------------------------	---

# RNAV (GPS) RWY 5

SOUTHWEST GEORGIA RGNL (A.B.Y)

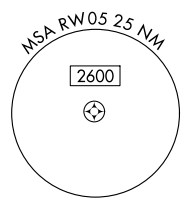
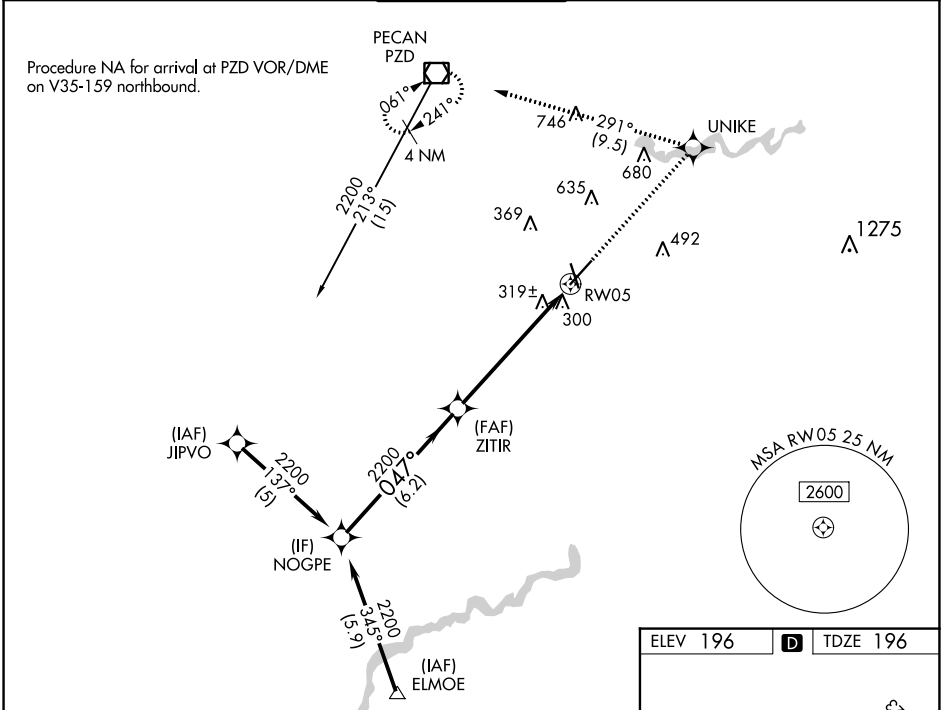
RNP APCH.

**▼** For uncompensated Baro-VNAV systems, LNAV/VNAV NA below -7°C or above 54°C. For inop ALS, increase LNAV Cat D visibility to RVR 6000.  
**▲** \*\* RVR 1800 authorized with use of FD or AP or HUD to DA.

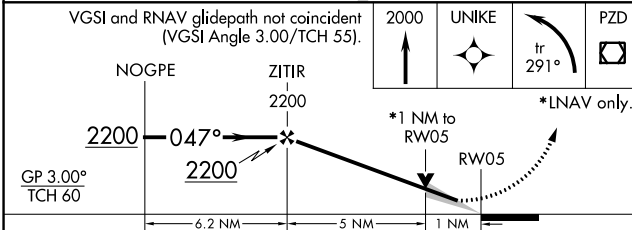
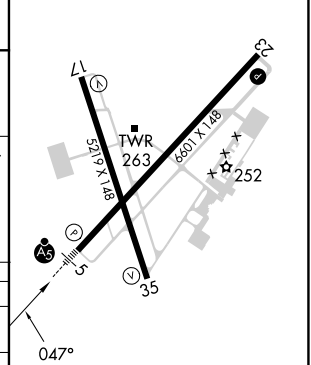


MISSED APPROACH: Climb to 2000 direct UNIKE and left turn on track 291° to PZD VOR/DME and hold.

ATIS <b>133.05</b>	JACKSONVILLE CENTER <b>125.75 363.075</b>	ALBANY TOWER * <b>120.25 (CTAF) 0336.4</b>	GND CON <b>121.9 348.6</b>	UNICOM <b>122.95</b>
-----------------------	--	---	-------------------------------	-------------------------



ELEV 196	<b>D</b>	TDZE 196
----------	----------	----------



CATEGORY	A	B	C	D
LPV DA**	396/24		200 (200-½)	
LNAV/VNAV DA	635/50		439 (500-1)	
LNAV MDA	580/24		384 (400-½)	
<b>C</b> CIRCLING	640-1	660-1	940-2¼	940-2½
	444 (500-1)	464 (500-1)	744 (800-2¼)	744 (800-2½)

HIRL Rwy 5-23 **1**  
 MIRL Rwy 17-35 **1**  
 REIL Rwy 35 **1**  
 REIL Rwy 17 and 23 **1**

SE-4, 22 FEB 2024 to 21 MAR 2024

SE-4, 22 FEB 2024 to 21 MAR 2024

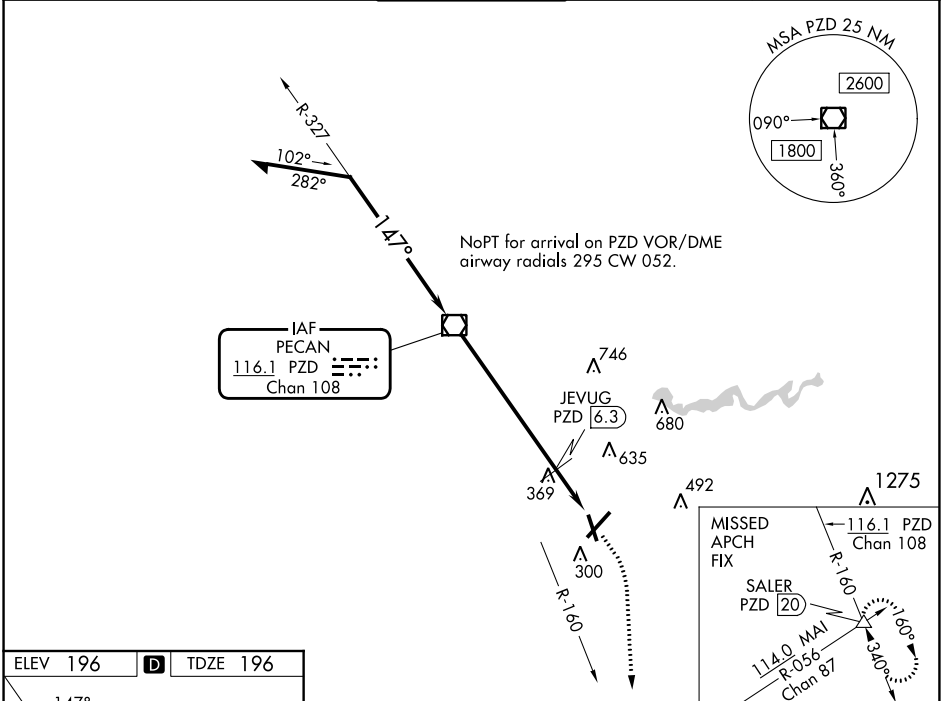
VOR/DME PZD <b>116.1</b> Chan <b>108</b>	APP CRS <b>147°</b>	Rwy Idg <b>5219</b> TDZE <b>196</b> Apt Elev <b>196</b>
--	------------------------	---

# VOR RWY 17

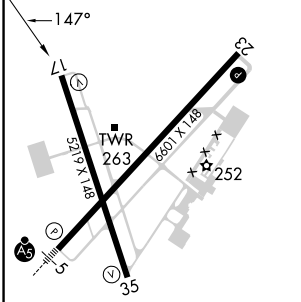
SOUTHWEST GEORGIA RGNL (ABY)

**▼** Rwy 17 helicopter visibility reduction below 3/4 SM NA.  
**▲** MISSED APPROACH: Climb to 1000 then climbing right turn to 3000 on heading 170° and PZD VOR/DME R-160 to SALER INT/20 DME and hold.

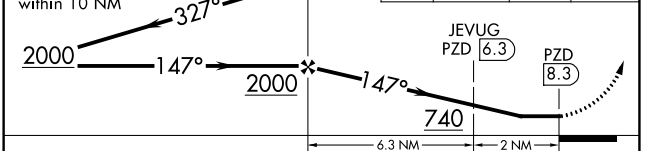
ATIS <b>133.05</b>	JACKSONVILLE CENTER <b>125.75 363.075</b>	ALBANY TOWER * <b>120.25(CTAF) 0336.4</b>	GND CON <b>121.9 348.6</b>	UNICOM <b>122.95</b>
-----------------------	--	--	-------------------------------	-------------------------



ELEV <b>196</b>	<b>D</b>	TDZE <b>196</b>
-----------------	----------	-----------------



VGSI and descent angles not coincident (VGSI Angle 3.00/TCH 52).  
 Remain within 10 NM



CATEGORY	A	B	C	D
S-17	740-1	544 (600-1)	740-1½	544 (600-1½)
<b>C</b> CIRCLING	740-1	544 (600-1)	940-2¼ 744 (800-2¼)	940-2½ 744 (800-2½)
JEVUG FIX MINIMUMS				
S-17	640-1	444 (500-1)	640-1¾	444 (500-1¾)
<b>C</b> CIRCLING	640-1 444 (500-1)	660-1 464 (500-1)	940-2¼ 744 (800-2¼)	940-2½ 744 (800-2½)

FAF to MAP 8.3 NM					
Knots	60	90	120	150	180
Min:Sec	8:18	5:32	4:09	3:19	2:46

HIRL Rwy 5-23 **①**  
 MIRL Rwy 17-35 **①**  
 REIL Rwy 35 **①**  
 REIL Rws 17 and 23

SE-4, 22 FEB 2024 to 21 MAR 2024

SE-4, 22 FEB 2024 to 21 MAR 2024