

WAAS CH 63134 W21A	APP CRS 215°	Rwy Idg TDZE Apt Elev	3398 941 943
--	------------------------	-----------------------------	---

RNAV (GPS) RWY 21

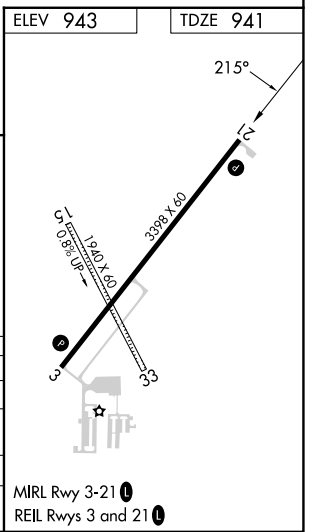
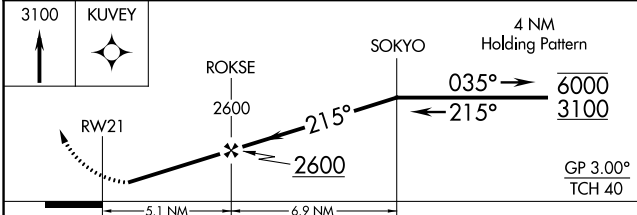
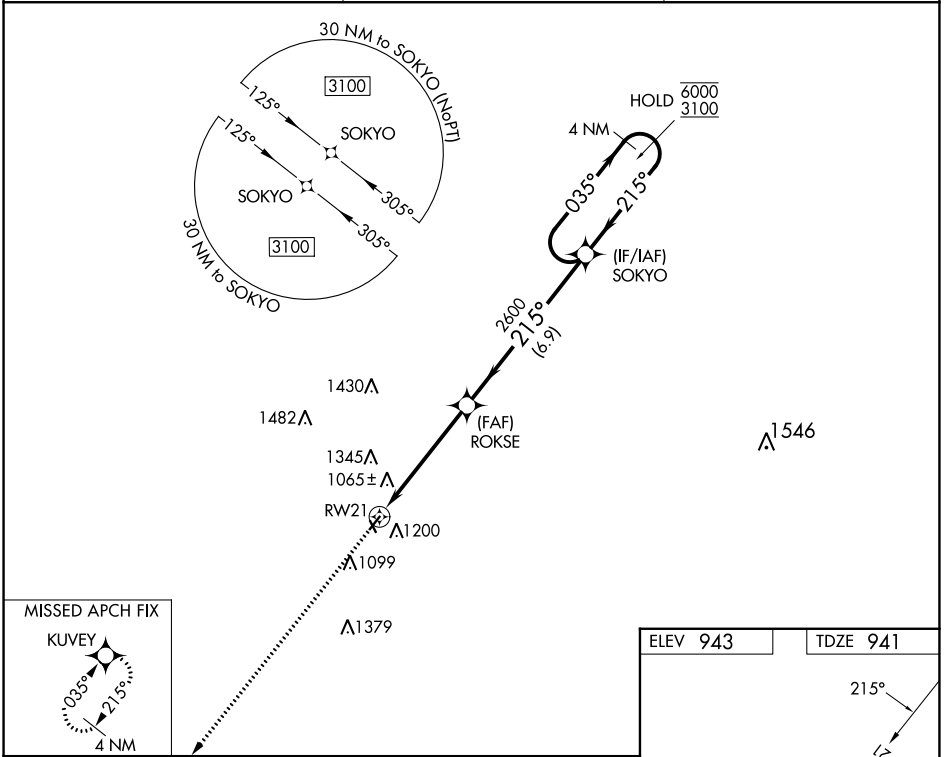
MIAMI COUNTY (K81)

RNP APCH - GPS.

NA Baro-VNAV NA. Use New Century Aircenter altimeter setting; when not received, use Johnson County Exec altimeter setting and increase all DA 8 feet and all MDA 20 feet; increase LPV and LNAV/VNAV all Cnts visibility 1/8 mile. Rwy 21 helicopter visibility reduction below 3/4 SM NA. Circling NA to Rwys 15 and 33.

MISSED APPROACH: Climb to 3100 direct KUYEV and hold.

IXD ASOS 135.325	KANSAS CITY APP CON 118.9 251.075	UNICOM 122.8 (CTAF) 0
----------------------------	---	---------------------------------



CATEGORY	A	B	C	D
LPV DA	1252-1	311 (400-1)		NA
LNAV/VNAV DA	1429-1 1/8	488 (500-1 1/8)		NA
LNAV MDA	1520-1	579 (600-1)		NA
C CIRCLING	1580-1	637 (700-1)		NA

NC-2, 22 FEB 2024 to 21 MAR 2024

NC-2, 22 FEB 2024 to 21 MAR 2024

WAAS CH 49134 W03A	APP CRS 035°	Rwy Idg 3398 TDZE 941 Apt Elev 943
--	------------------------	---

RNAV (GPS) RWY 3

MIAMI COUNTY (K81)

RNP APCH - GPS.

NA Baro-VNAV NA. Use New Century Aircenter altimeter setting; when not received, use Johnson County Exec altimeter setting and increase all DA 8 feet and all MDA 20 feet. Rwy 3 helicopter visibility reduction below 3/4 SM NA. Circling NA to Rwy 15 and 33.

MISSED APPROACH: Climb to 3100 direct SOKYO and hold.

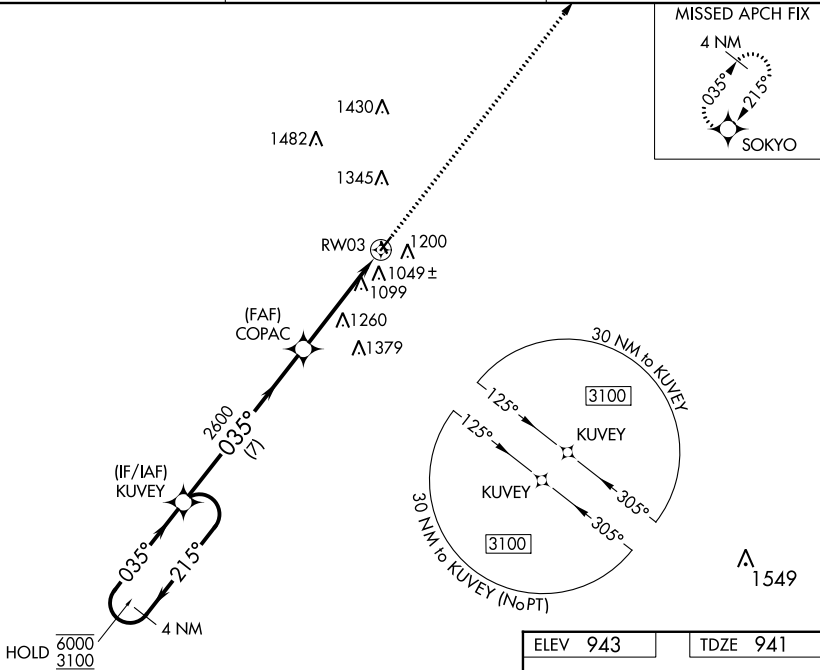
IXD ASOS
135.325

KANSAS CITY APP CON
118.9 251.075

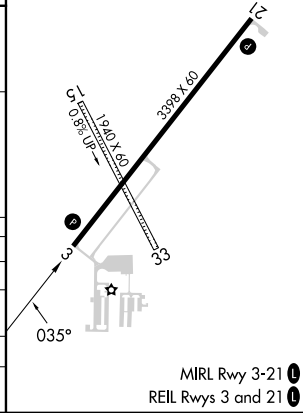
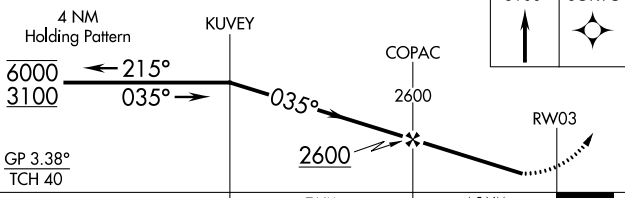
UNICOM
122.8 (CTAF) 0

NC-2, 22 FEB 2024 to 21 MAR 2024

NC-2, 22 FEB 2024 to 21 MAR 2024



ELEV 943	TDZE 941
----------	----------



CATEGORY	A	B	C	D
LPV DA	1284-1	343 (400-1)		NA
LNNAV/VNAV DA	1274-1	333 (400-1)		NA
LNNAV MDA	1640-1	699 (700-1)		NA
C CIRCLING	1640-1	697 (700-1)		NA