

APP CRS **190°**  
 Rwy Idg **5201**  
 TDZE **726**  
 Apt Elev **726**

# RNAV (GPS) RWY 19

JAMES A RHODES (JRO)

RNP APCH - GPS.

Procedure NA at night.  
 Rwy 19 helicopter visibility reduction below 1 SM NA.

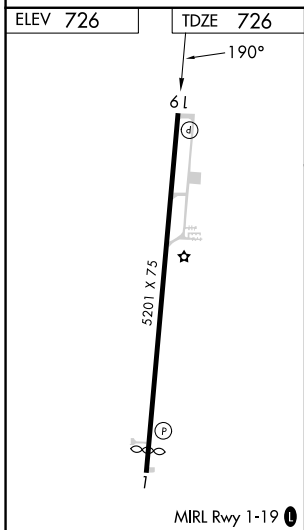
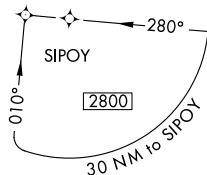
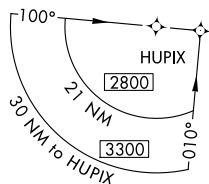
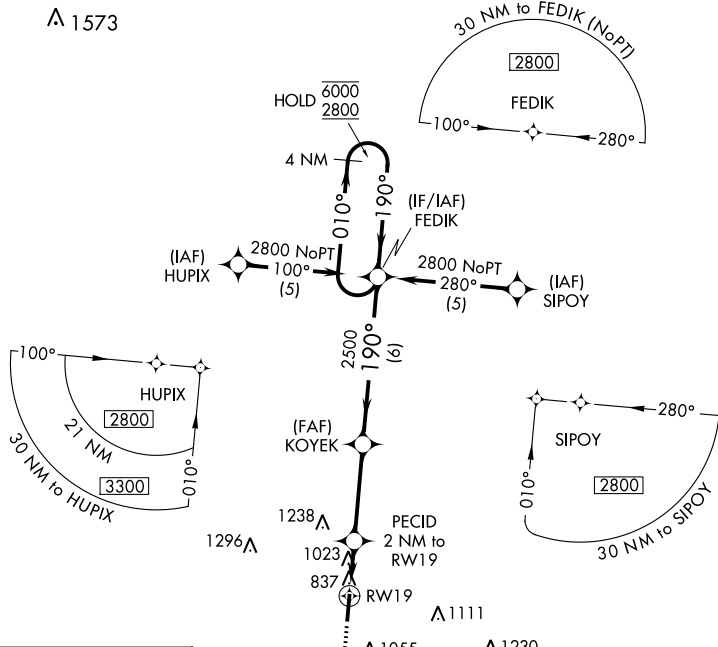
MISSED APPROACH: Climb to 2800 direct OSATE and hold.

AWOS-3  
**118.825**

HUNTINGTON APP CON  
**128.4 270.1**

UNICOM  
**122.7 (CTAF) 0**

▲ 1573



ELEV 726	TDZE 726	MISSED APCH FIX OSATE	
2800	OSATE	VGSi and descent angles not coincident (VGSi Angle 4.00/TCH 45).	
KOEYK		FEDIK 4 NM Holding Pattern	
PECID 2 NM to RWY 19		RWY 19	
RWY 19		RWY 19	
3.32° TCH 40		1460	
2500		6000	
190°		010°	
190°		2800	
2 NM		3.5 NM	
6 NM			
CATEGORY	A	B	C
LNAV MDA	1280-1	554 (600-1)	1280-1½ 554 (600-1½)
CIRCLING	1340-1 614 (700-1)	1480-1 754 (800-1)	1680-3 954 (1000-3)

EC-2, 22 FEB 2024 to 21 MAR 2024

EC-2, 22 FEB 2024 to 21 MAR 2024