

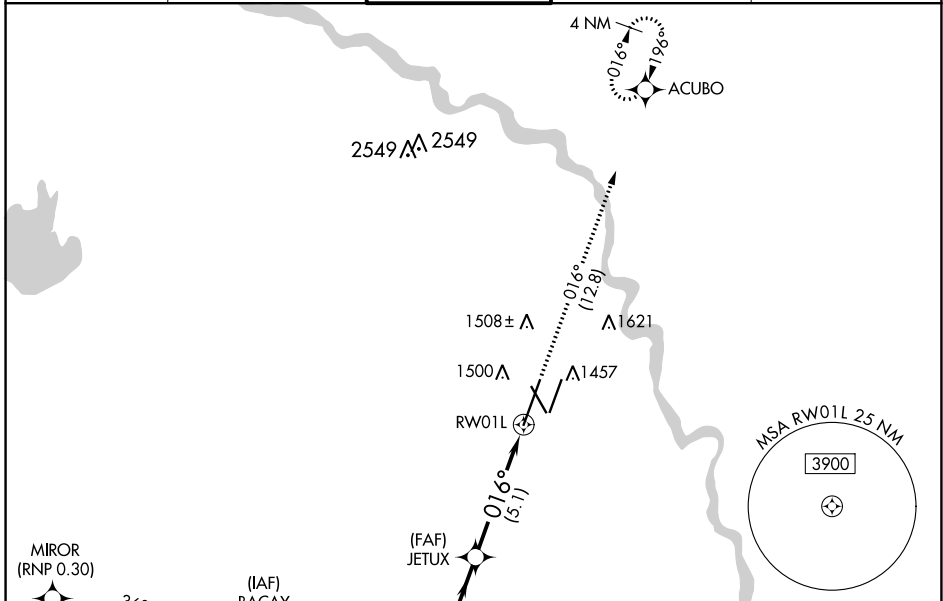
APP CRS	Rwy Idg	10302
016°	TDZE	1314
	Apt Elev	1333

RNAV (RNP) Z RWY 1L

WICHITA DWIGHT D EISENHOWER NTL (ICT)

RNP AR APCH	<p>Simultaneous approach authorized. Use of FD or AP providing RNAV track guidance required during simultaneous operations. For uncompensated Baro-VNAV systems, procedure NA below -15°C or above 54°C. For inop ALS, increase RNP 0.15 all Cats visibility to RVR 4500 and RNP 0.30 all Cats visibility to RVR 5500.</p>	<p>ALSF-2</p>	<p>MISSED APPROACH: Climb to 4200 on track 016° to ACUBO and hold.</p>
-------------	--	---------------	--

<p>ATIS</p> <p>125.15</p>	<p>WICHITA APP CON</p> <p>126.7 353.5</p>	<p>WICHITA TOWER</p> <p>118.2 257.8</p>	<p>GND CON</p> <p>121.9 348.6</p>	<p>CLNC DEL</p> <p>125.7</p>
----------------------------------	--	--	--	-------------------------------------

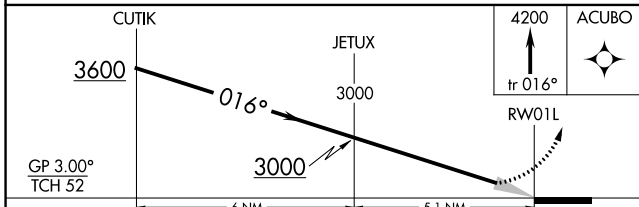
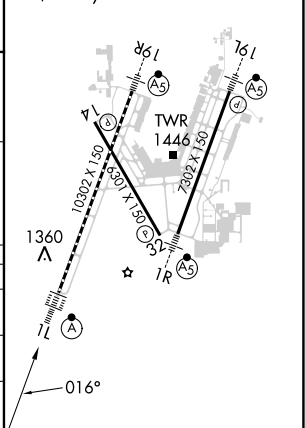


NC-2, 22 FEB 2024 to 21 MAR 2024

NC-2, 22 FEB 2024 to 21 MAR 2024

ELEV 1333	D TDZE 1314
-----------	--------------------

HIRL all Rwys
REIL Rws 14 and 32
TDZ/CL Rwy 1L



CATEGORY	A	B	C	D
RNP 0.15 DA		1626/28	312 (300-3%)	
RNP 0.30 DA		1676/35	362 (400-3%)	

AUTHORIZATION REQUIRED