

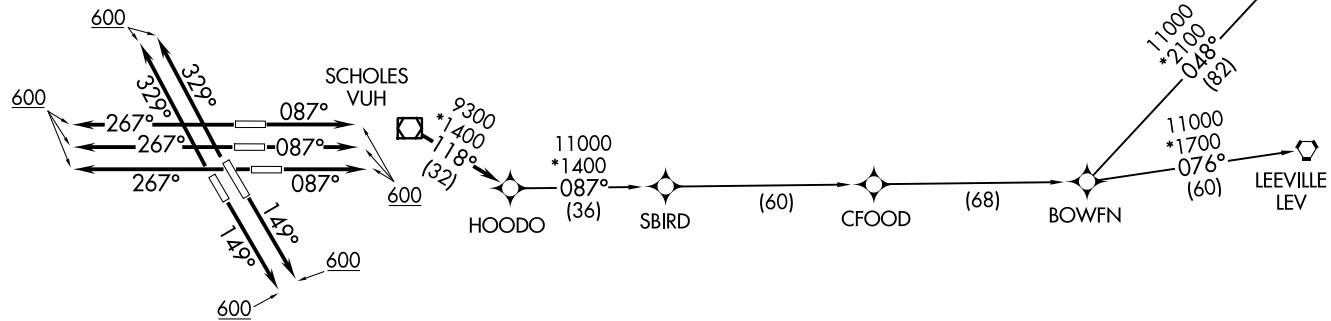
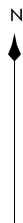
HOODO SEVEN DEPARTURE (RNAV)  
(HOODO7.HOODO) 07OCT21

HOUSTON, TEXAS  
GEORGE BUSH INTCNL/HOUSTON (IAH)

D-ATIS  
124.05  
CLNC DEL  
128.1  
CPDLC  
GND CON  
118.575 (Rwys 8L/R, 9, 26L/R, 27)  
121.7 (Rwys 15L/R, 33L/R)  
HOUSTON TOWER  
120.725 290.2 (Rwys 8L, 26R)  
125.35 290.2 (Rwys 8R, 26L)  
127.3 288.25 (Rwys 15L/R, 33L/R)  
135.15 290.2 (Rwys 9, 27)  
HOUSTON DEP CON  
127.125 269.075

NOTE: RNAV 1.  
NOTE: RADAR required.  
NOTE: ATC assigned only.  
NOTE: DME/DME/IRU or GPS required.  
NOTE: For non-GPS equipped aircraft, LCH, LLA, TBD, and LEV DME's must be operational.

**TOP ALTITUDE:  
16000**



TAKEOFF MINIMUMS  
Rwys 8L/R, 9, 15L/R, 26L/R, 27, 33L/R:  
Standard with minimum climb of 500' per NM to 600.

NOTE: Chart not to scale.

(NARRATIVE ON FOLLOWING PAGE)

(HOODO7.HOODO) 21280  
HOODO SEVEN DEPARTURE (RNAV)

AL-5461 (FAA)

HOUSTON, TEXAS  
GEORGE BUSH INTCNL/HOUSTON (IAH)



DEPARTURE ROUTE DESCRIPTION

TAKEOFF RUNWAYS 8L/R, 9: Climb on heading 087° to 600, for RADAR vectors to VUH VOR/DME, thence . . . .

TAKEOFF RUNWAYS 15L/R: Climb on heading 149° to 600, for RADAR vectors to VUH VOR/DME, thence . . . .

TAKEOFF RUNWAYS 26L/R, 27: Climb on heading 267° to 600, for RADAR vectors to VUH VOR/DME, thence . . . .

TAKEOFF RUNWAYS 33L/R: Climb on heading 329° to 600, for RADAR vectors to VUH VOR/DME, thence . . . .

. . . . on track 118° to HOODO, then on (transition). Maintain 16000.

Expect filed altitude 10 minutes after departure.

BOWFN TRANSITION (HOODO7.BOWFN)

CFOOD TRANSITION (HOODO7.CFOOD)

HARVEY TRANSITION (HOODO7.HRV)

LEEVILLE TRANSITION (HOODO7.LEV)

SBIRD TRANSITION (HOODO7.SBIRD)

SC-5, 22 FEB 2024 to 21 MAR 2024

SC-5, 22 FEB 2024 to 21 MAR 2024