

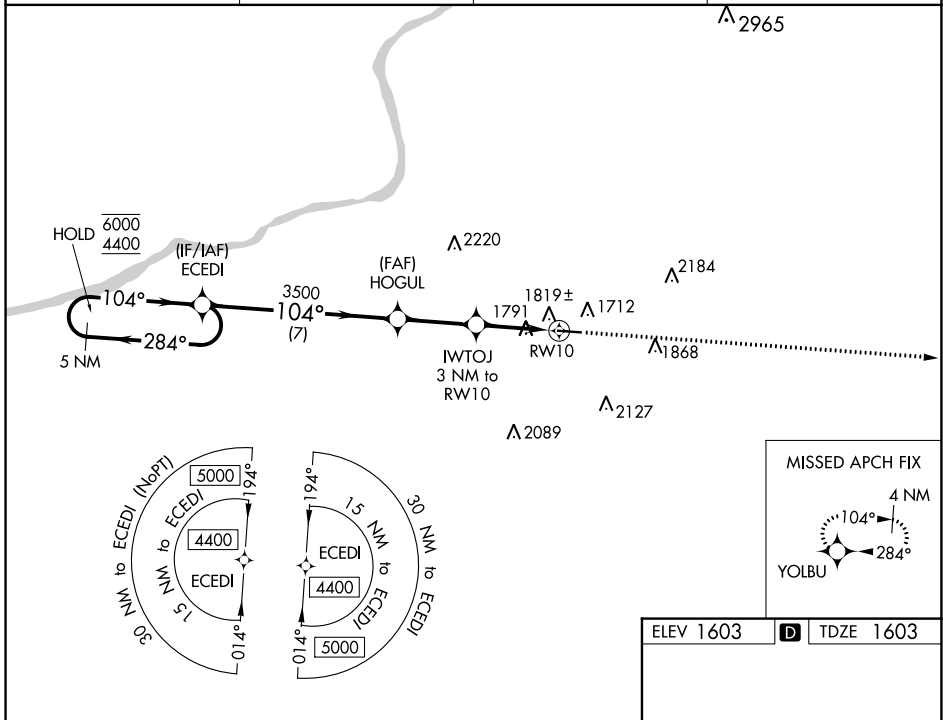
WAAS CH 86240 W10A	APP CRS 104°	Rwy Idg TDZE Apt Elev	4801 1603 1603
--	------------------------	-----------------------------	---

RNAV (GPS) RWY 10

HAZLETON RGNL (HZZ)

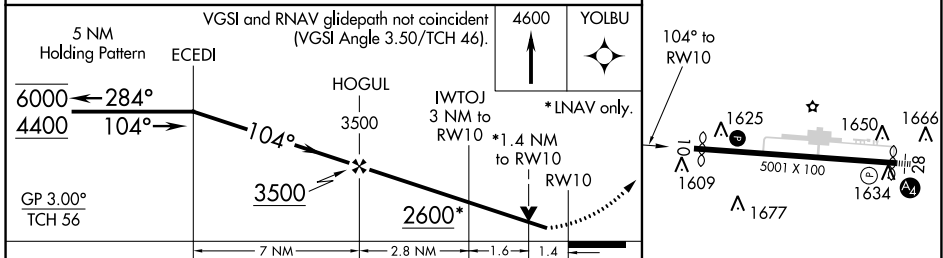
RNP APCH.		MISSED APPROACH: Climb to 4600 direct YOLBU and hold.
<p>▽ ▲ Rwy 10 helicopter visibility reduction below 3/4 SM NA. For uncompensated Baro-VNAV systems, LNAV/VNAV NA below -18°C or above 54°C.</p>		

AWOS-3 119.975	WILKES-BARRE APP CON 126.3 256.7	CLNC DEL 121.7	UNICOM 123.0 (CTAF) 0
--------------------------	--	--------------------------	---------------------------------



NE-4, 22 FEB 2024 to 21 MAR 2024

NE-4, 22 FEB 2024 to 21 MAR 2024



ELEV 1603		TDZE 1603	
CATEGORY	A	B	C
LPV DA	2059-1 ³ / ₈	456 (500-1 ³ / ₈)	
LNAV/VNAV DA	2097-1 ³ / ₈	494 (500-1 ³ / ₈)	
LNAV MDA	2080-1	477 (500-1)	2080-1 ³ / ₈ 477 (500-1 ³ / ₈)
CIRCLING	2140-1	2400-1	2480-2 ¹ / ₂
	537 (600-1)	797 (800-1)	877 (900-2 ¹ / ₂)
			2520-3
			917 (1000-3)

REIL Rwy 10 0
MIRL Rwy 10-28 0