


VOR/DME CCC	APP CRS	Rwy Idg	4201
<b>114.55</b>	<b>042°</b>	TDZE	<b>77</b>
Chan <b>92 (Y)</b>		Apt Elev	<b>81</b>

# VOR RWY 6

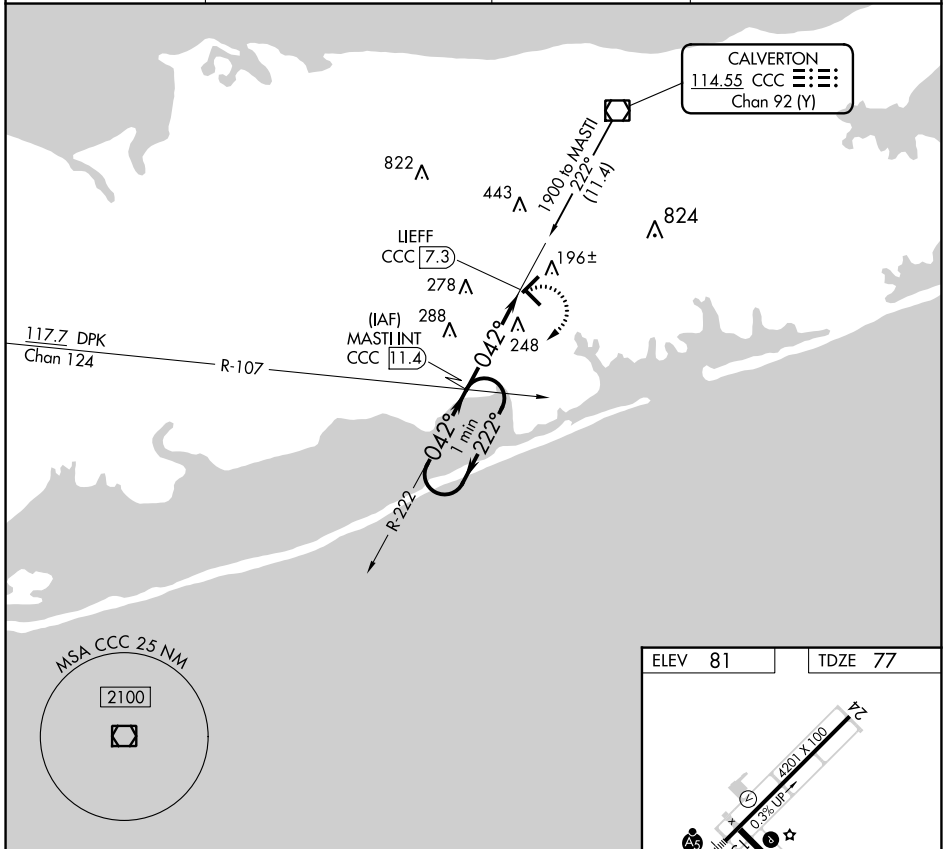
BROOKHAVEN (HWV)

**⚠** Inoperative table does not apply.  
**⚠** When local altimeter setting not received, use Islip altimeter setting and increase all MDAs 40 feet.

**MALSR** 

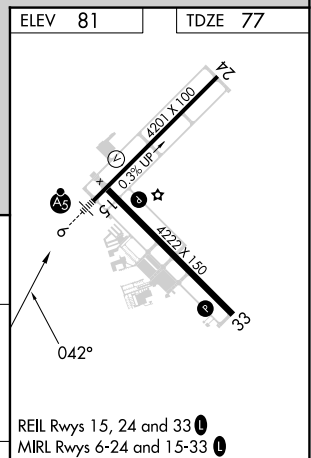
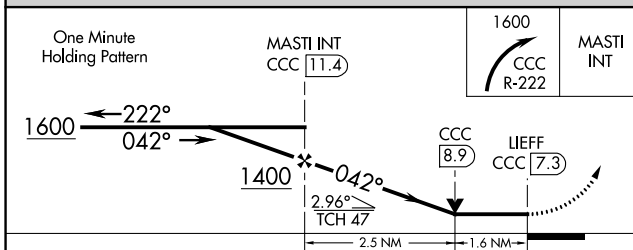
**MISSED APPROACH:** Climbing right turn to 1600 via CCC VOR/DME R-222 to MASTI INT/11.4 DME and hold.

ASOS <b>119.625</b>	NEW YORK APP CON <b>120.05 343.75</b>	CLNC DEL <b>133.2</b>	UNICOM <b>122.8 (CTAF) 0</b>
------------------------	--	--------------------------	---------------------------------



NE-2, 22 FEB 2024 to 21 MAR 2024

NE-2, 22 FEB 2024 to 21 MAR 2024



CATEGORY	A	B	C	D	FAF to MAP 4.1 NM					
S-6	620-1	543 (600-1)		NA	Knots	60	90	120	150	180
<b>C</b> CIRCLING	620-1	539 (600-1)		NA	Min:Sec	4:06	2:44	2:03	1:38	1:22