

WAAS CH <b>65722</b> <b>W31A</b>	APP CRS <b>310°</b>	Rwy Idg TDZE <b>1345</b> Apt Elev <b>1354</b>
--	------------------------	---

# RNAV (GPS) RWY 31

RANGE RGNL (HIB)

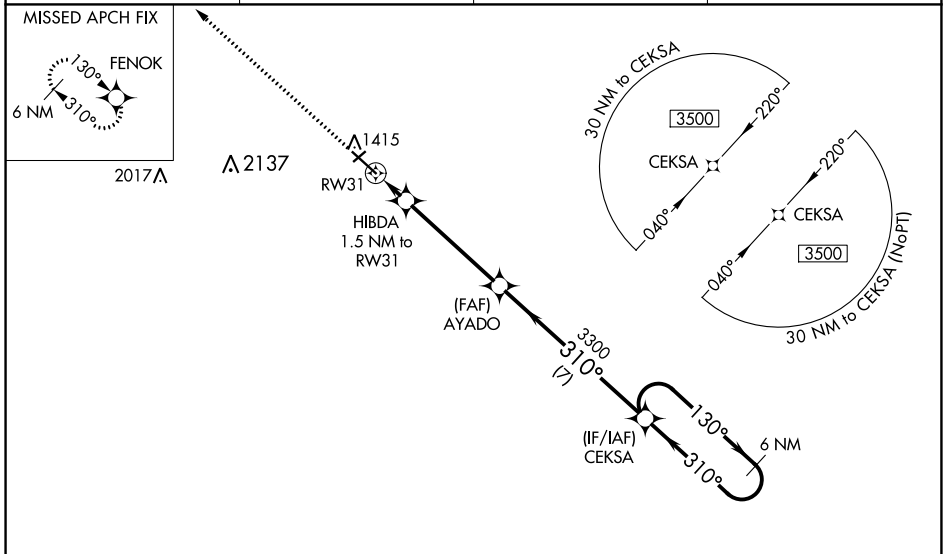
**⚠** Circling to Rwy 4 NA at night. For uncompensated Baro-VNAV systems, LNAV/VNAV NA below -17°C (2°F) or above 35°C (95°F). DME/DME RNP-0.3 NA. VDP and Baro-VNAV NA when using Eveleth altimeter setting. When local altimeter setting not received, use Eveleth altimeter setting and increase all DA 36 feet and all MDA 40 feet. For inop MALSRS increase LNAV/VNAV all Cats visibility to ¾ mile, LNAV Cat C/D to 1 mile. For inop MALSRS when using Eveleth altimeter setting, increase LNAV/VNAV all Cats visibility to ⅞ mile.

MALSRS



MISSED APPROACH: Climb to 3500 direct FENOK and hold.

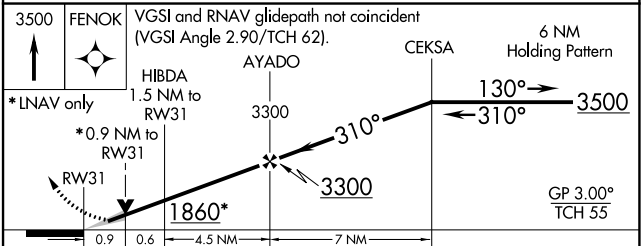
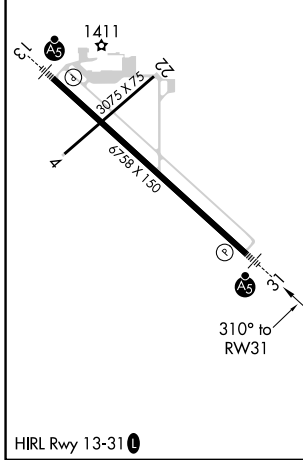
ASOS <b>126.425</b>	DULUTH APP CON <b>125.45 233.7</b>	CLNC DEL <b>127.4</b>	UNICOM <b>123.0 (CTAF) 0</b>
------------------------	---------------------------------------	--------------------------	---------------------------------



NC-1, 22 FEB 2024 to 21 MAR 2024

NC-1, 22 FEB 2024 to 21 MAR 2024

ELEV 1354	<b>D</b>	TDZE 1345
-----------	----------	-----------



CATEGORY	A	B	C	D
LPV DA		1545-½	200 (200-½)	
LNAV/VNAV DA		1595-½	250 (300-½)	
LNAV MDA	1680-½	335 (400-½)	1680-⅝	335 (400-⅝)
CIRCLING	1820-1 466 (500-1)	1840-1 486 (500-1)	1840-1½ 486 (500-1½)	1960-2 606 (700-2)