

VORTAC RQZ	APP CRS	Rwy Idg	5010
112.2	313°	TDZE	665
Chan 59		Apt Elev	689

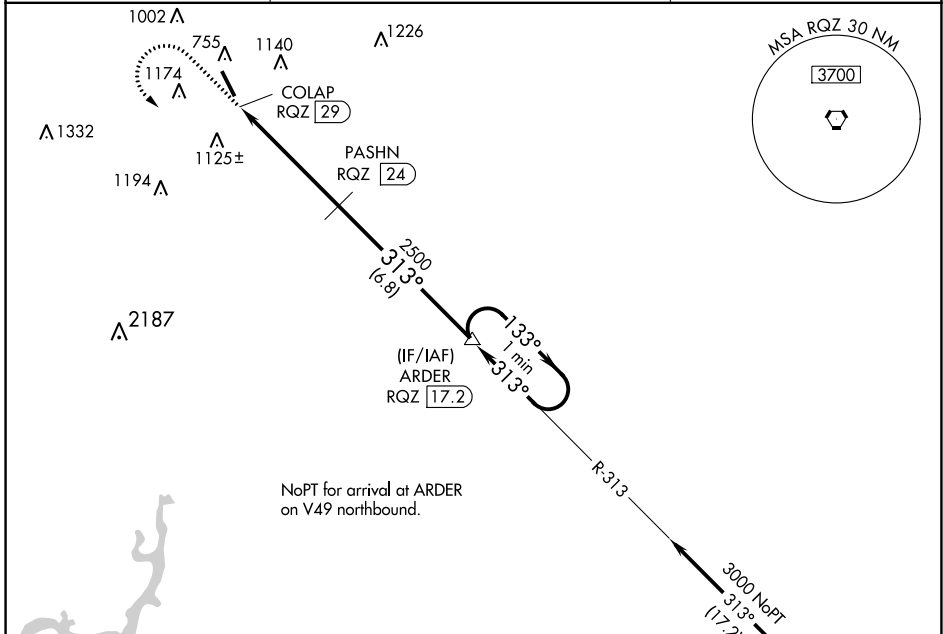
# VOR/DME RWY 34

ABERNATHY FLD (GZS)

When local altimeter setting not received, use Huntsville Exec Tom Sharp Jr Fld altimeter setting and increase all MDA 100 feet and increase S-34 Cats A/B visibility ¼ mile and Cats C/D visibility ½ mile; increase Circling Cat B visibility ¼ mile and Cat C visibility ½ mile. Night landing: Rwy 16 NA. Helicopter visibility reduction below ¾ SM NA.

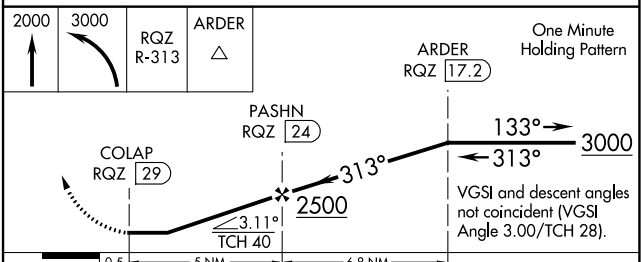
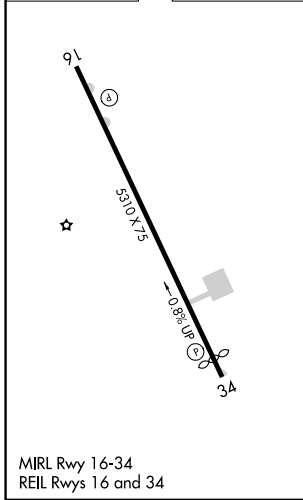
MISSED APPROACH: Climb to 2000 then climbing left turn to 3000 on RQZ VORTAC R-313 to ARDER/RQZ 17.2 DME and hold.

AWOS-3 118.275	MEMPHIS CENTER 125.85 379.25	UNICOM 122.8 (CTAF)
-------------------	---------------------------------	------------------------



NoPT for arrival at ARDER on V49 northbound.

ELEV 689	TDZE 665
----------	----------



CATEGORY	A	B	C	D
S-34	1520-1 855 (900-1)	1520-1¼ 855 (900-1¼)	1520-2½	855 (900-2½)
<input checked="" type="checkbox"/> CIRCLING	1520-1¼	831 (900-1¼)	1520-2½ 831 (900-2½)	1640-3 951 (1000-3)

SE-1, 22 FEB 2024 to 21 MAR 2024

SE-1, 22 FEB 2024 to 21 MAR 2024