

VOR/DME HBU <b>114.9</b> Chan <b>96</b>	APP CRS <b>031°</b>	Rwy Idg TDZE Apt Elev <b>7680</b>	N/A N/A <b>7680</b>
---	------------------------	--	---------------------------

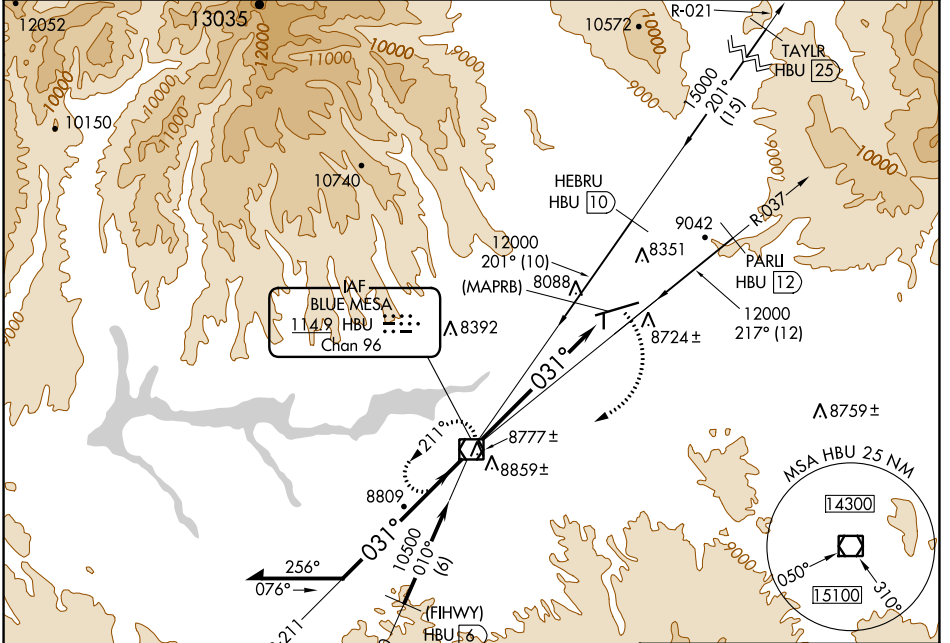
# VOR or GPS-A

GUNNISON-CRESTED BUTTE RGNL (GUC)

**Procedure NA when airport closed except by prior arrangement. Obtain local altimeter setting on CTAF; when not received, procedure NA.**

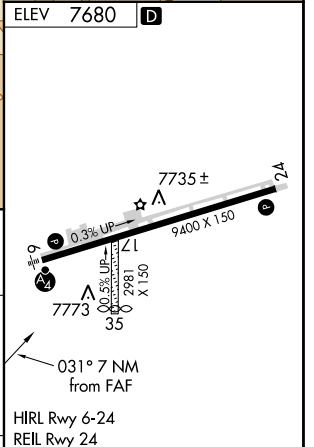
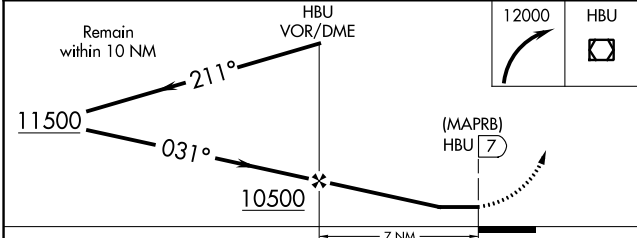
**MISSED APPROACH: Climbing right turn to 12000 direct HBU VOR/DME and hold.**

AWOS-3PT <b>135.075</b>	DENVER CENTER <b>124.5 350.25</b>	UNICOM <b>122.7 (CTAF)</b>
----------------------------	--------------------------------------	-------------------------------



SW-1, 22 FEB 2024 to 21 MAR 2024

SW-1, 22 FEB 2024 to 21 MAR 2024



CATEGORY	A	B	C	D	FAF to MAP 7 NM					
CIRCLING	9260-2 1580 (1600-2)	9340-2 1660 (1700-2)	9540-3 1860 (1900-3)	10040-3 2360 (2400-3)	Knots	60	90	120	150	180
					Min:Sec	7:00	4:40	3:30	2:48	2:20