

(RIDDG1.RIDDG) 23278

RIDDG ONE DEPARTURE (RNAV)

GLACIER PARK INTL (GPI)
KALISPELL, MONTANA
RNAV 1 - GPS.

AL-887 (FAA)

SALT LAKE CENTER
127.075 244.875
ATIS
132.625
GND CON
121.6
GLACIER TOWER *
124.55

**TOP ALTITUDE:
AS ASSIGNED BT ATC**

KECEK
7000 230K

EEVEL
8000

DAACE
6300

KNEVL

PYGMY
8300

RIDDG
9000

DRDVL
8200

MULLAN PASS
MLP

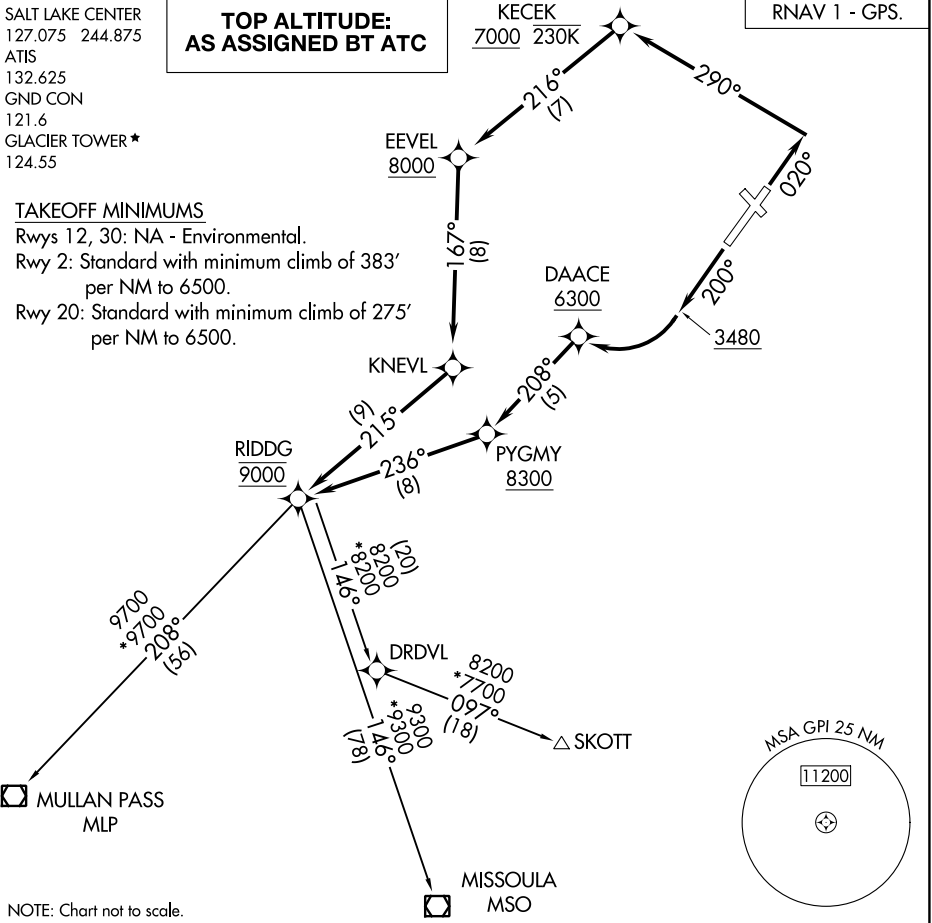
MISSOULA
MSO

TAKEOFF MINIMUMS

Rwys 12, 30: NA - Environmental.
Rwy 2: Standard with minimum climb of 383'
per NM to 6500.
Rwy 20: Standard with minimum climb of 275'
per NM to 6500.

NW-1, 22 FEB 2024 to 21 MAR 2024

NW-1, 22 FEB 2024 to 21 MAR 2024



NOTE: Chart not to scale.

DEPARTURE ROUTE DESCRIPTION

TAKEOFF RUNWAY 2: Climb on heading 020° to intercept course 290° to cross KECEK at or above 7000, then on track 216° to cross EEVEL at or above 8000, then on track 167° to KNEVL, then on track 215° to cross RIDDG at 9000, thence. . . .

TAKEOFF RUNWAY 20: Climb on heading 200° to 3480, then right turn direct to cross DAACE at or above 6300, then on track 208° to cross PYGMY at or above 8300, then on track 236° to cross RIDDG at 9000, thence. . . .

. . . on filed transition. Maintain ATC assigned altitude. Expect clearance to filed altitude five minutes after departure.

- MISSOULA TRANSITION (RIDDG1.MSO)
- MULLAN PASS TRANSITION (RIDDG1.MLP)
- SKOTT TRANSITION (RIDDG1.SKOTT)

RIDDG ONE DEPARTURE (RNAV)

(RIDDG1.RIDDG) 05OCT23

KALISPELL, MONTANA
GLACIER PARK INTL (GPI)