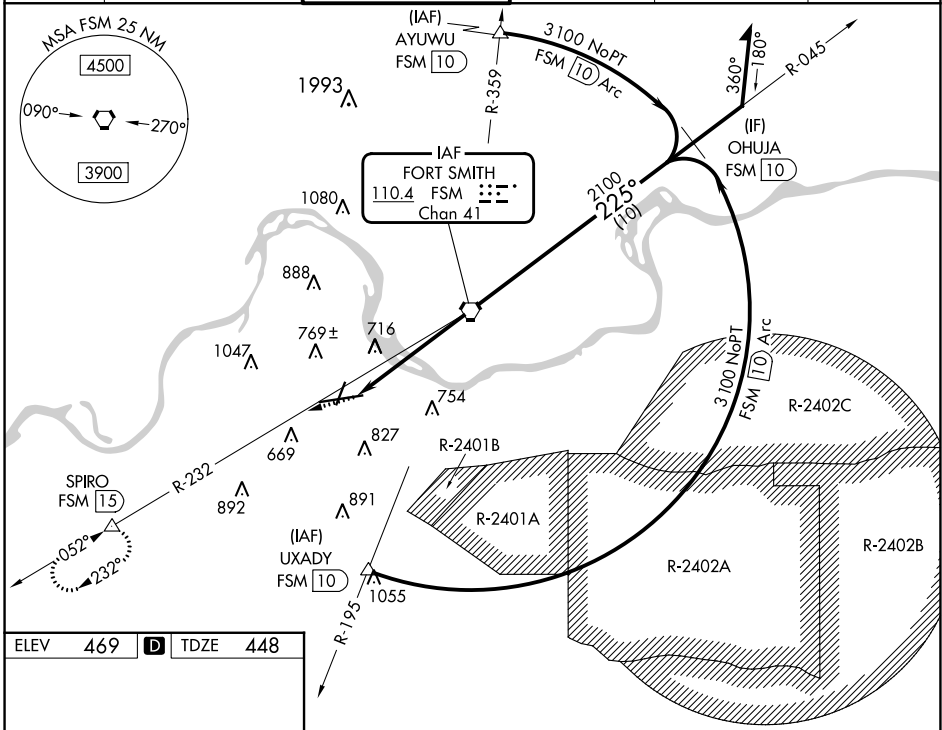


VORTAC FSM	APP CRS	Rwy Idg	<b>9318</b>
<b>110.4</b>	<b>225°</b>	TDZE	<b>448</b>
Chan <b>41</b>		Apt Elev	<b>469</b>

# VOR Z or TACAN Z RWY 26

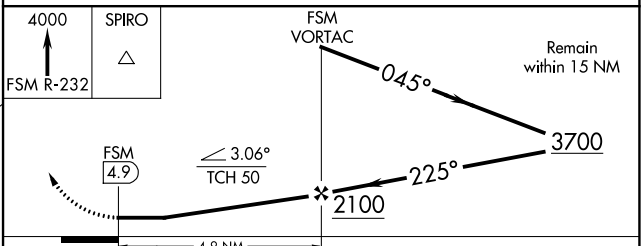
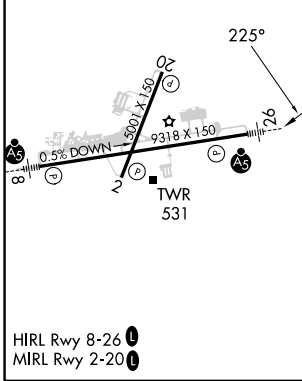
FORT SMITH RGNL (FSM)

DME required.		MALSR		MISSED APPROACH: Climb to 4000 on FSM VORTAC R-232 to SPIRO/15 DME and hold, continue climb-in-hold to 4000.	
Rwy 26 helicopter visibility reduction below RVR 5000 NA. Inop table does not apply. Circling Cat E NA when R-2401B active. Arc segment R-195 CCW: NA when restricted areas R-2401 and R-2402 in effect. Circling NA for Cat E northwest of Rwy 8 and Rwy 20. Straight-in Rwy 26 NA at night, Circling Rwy 20, 26 NA at night.		ATIS <b>124.775</b>		RAZORBACK APP CON* <b>120.9 343.75</b>	
FORT SMITH TOWER* <b>118.3(CTAF) 323.175</b>		GND CON <b>121.9 275.8</b>		CLNC DEL <b>133.85 278.3</b>	
				UNICOM <b>122.95</b>	



ELEV	<b>469</b>	<b>D</b>	TDZE	<b>448</b>
------	------------	----------	------	------------

Procedure NA for arrival on FSM VORTAC airway radials 036 CW 090.



CATEGORY	A	B	C	D	E
S-26	980/55	532 (600-1)	980-1½ 532 (600-1½)		
<b>C</b> CIRCLING	1140-1	671 (700-1)	1400-2¾ 931 (1000-2¾)	1400-3 931 (1000-3)	

SC-1, 22 FEB 2024 to 21 MAR 2024

SC-1, 22 FEB 2024 to 21 MAR 2024