

WAAS CH 50404 W18A	APP CRS 176°	Rwy Idg TDZE Apt Elev	4403 914 918
---------------------------------	------------------------	-----------------------------	---

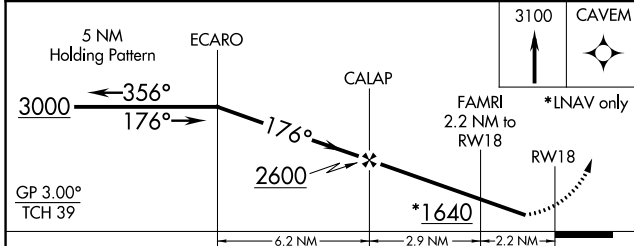
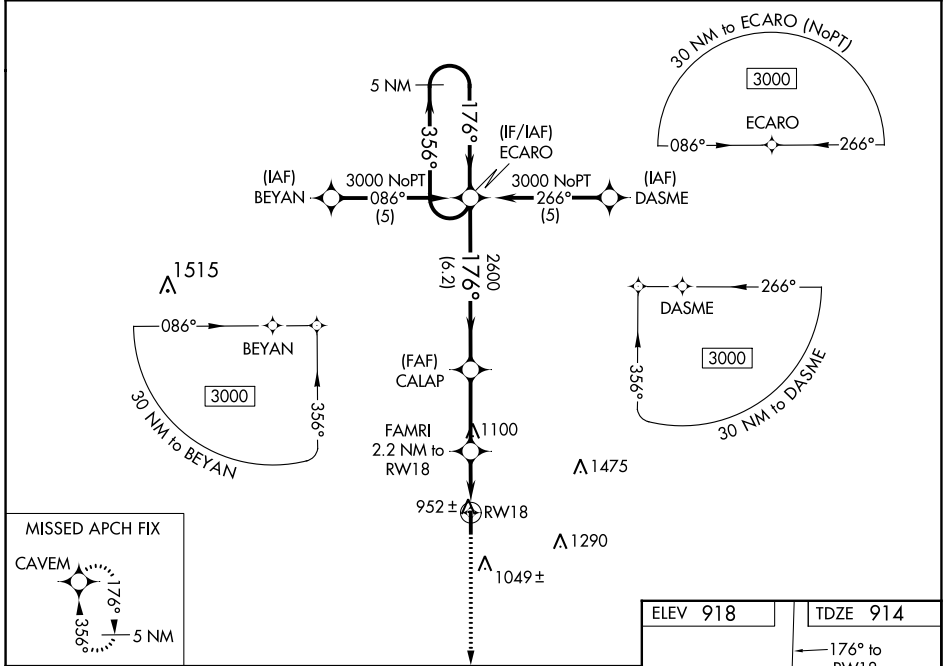
RNAV (GPS) RWY 18

FORT SCOTT MUNI (F'SK)

NA When local altimeter setting not received, use Chanute altimeter setting and increase all DAs 93 feet and all MDAs 100 feet; increase Circling Cat C/D visibility 1/2 SM. Baro-VNAV NA when using Chanute altimeter setting. For uncompensated Baro-VNAV systems, LNAV/VNAV NA below -1.6°C (4°F) or above 47°C (116°F). DME/DME RNP-0.3 NA. Visibility reduction by helicopters NA.

MISSED APPROACH: Climb to 3100 direct CAVEM and hold.

AWOS-3P 124.425	KANSAS CITY CENTER 125.55 327.0	UNICOM 122.8 (CTAF) 0
---------------------------	---	---------------------------------



ELEV 918	TDZE 914
176° to RW18	
81	36
4403 X 75	0.3% UP
REIL Rwy 18 and 36 0	
MIRL Rwy 18-36 0	

CATEGORY	A	B	C	D
LPV DA		1164-1	250 (300-1)	
LNAV/VNAV DA		1212-1	298 (300-1)	
LNAV MDA		1220-1	306 (400-1)	
CIRCLING	1280-1 362 (400-1)	1380-1 462 (500-1)	1640-2 722 (800-2)	1640-2 1/4 722 (800-2 1/4)

NC-2, 22 FEB 2024 to 21 MAR 2024

NC-2, 22 FEB 2024 to 21 MAR 2024