

WAAS CH <b>45520</b> W33A	APP CRS <b>326°</b>	Rwy Idg <b>3999</b> TDZE <b>984</b> Apt Elev <b>984</b>
---------------------------------	------------------------	---------------------------------------------------------------

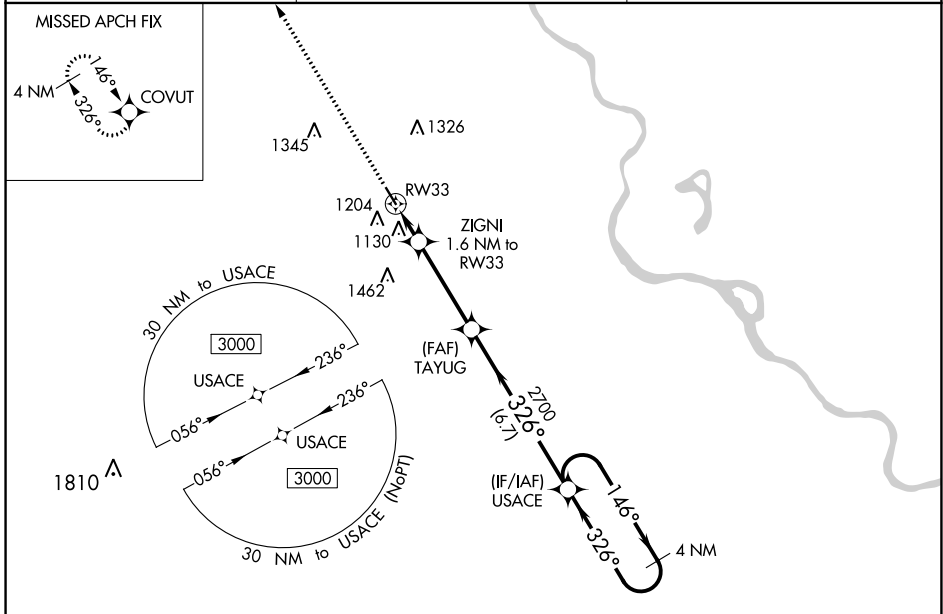
# RNAV (GPS) RWY 33

BRENNER FLD (FNB)

**NA** For uncompensated Baro-VNAV systems, LNAV/VNAV NA below -21°C (-5°F) or above 54°C (130°F). DME/DME RNP-0.3 NA. VDP and Baro-VNAV NA when using Nebraska City altimeter setting. When local altimeter not received, use Nebraska City altimeter setting and increase all DA 104 feet and all MDA 120 feet.

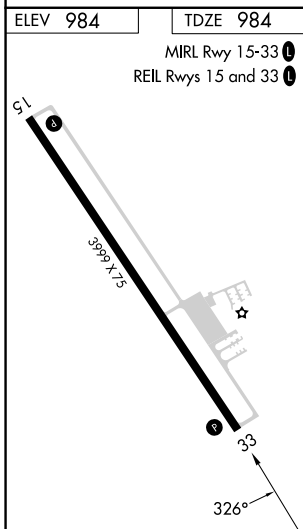
MISSED APPROACH: Climb to 3000 direct COVUT and hold.

ASOS <b>119.275</b>	ST JOSEPH APP CON <b>120.35 360.8</b>	UNICOM <b>122.8 (CTAF) 1</b>
------------------------	------------------------------------------	---------------------------------



NC-2, 22 FEB 2024 to 21 MAR 2024

NC-2, 22 FEB 2024 to 21 MAR 2024



ELEV 984	TDZE 984				
MIRL Rwy 15-33 1					
REIL Rws 15 and 33 1					
3000	COVUT				
*LNAV only.					
RW33		ZIGNI 1.6 NM to RW33	TAYUG 2700	USACE	4 NM Holding Pattern
		1520*	2700	3000	
		1.6	3.7 NM	6.7 NM	
				146° →	← 326°
				GP 3.00° TCH 40	
CATEGORY	A	B	C	D	
LPV DA	1234-1	250 (300-1)			NA
LNAV/VNAV DA	1276-1	292 (300-1)			NA
LNAV MDA	1380-1	396 (400-1)			NA
<b>C</b> CIRCLING	1560-1	576 (600-1)			NA