

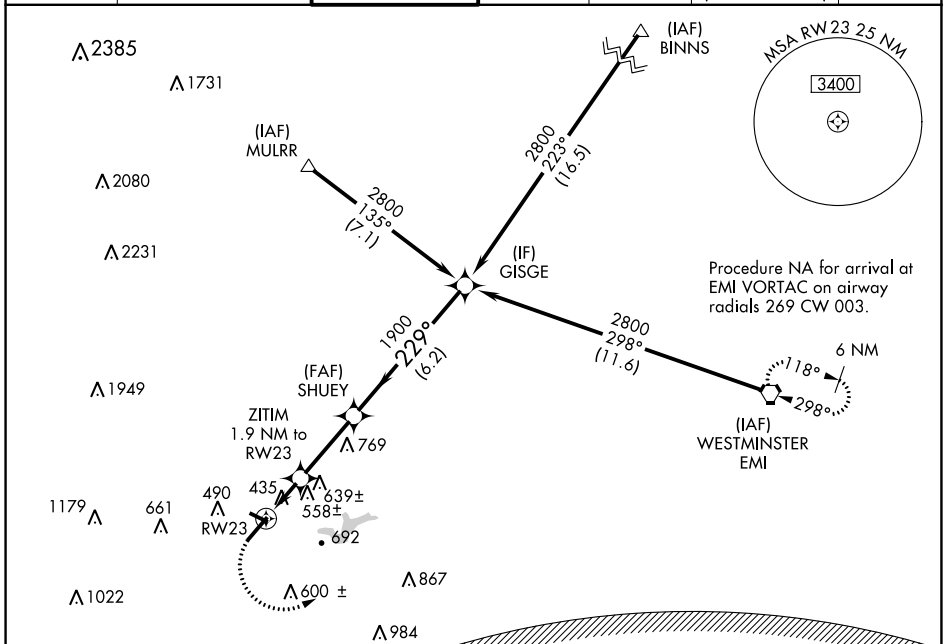
APP CRS	Rwy Idg	5819
229°	TDZE	296
	Apt Elev	306

RNAV (GPS) Y RWY 23

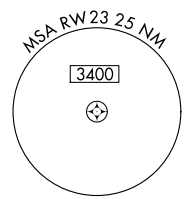
FREDERICK MUNI (FDK)

RNP APCH.	ODALS	MISSED APPROACH: Climbing left turn to 3000 direct EMI VORTAC and hold.
<p>▼ Inop table does not apply to Cat C. Rwy 23 helicopter visibility reduction below 3/4 SM NA. Circling Rwy 30 NA at night.</p> <p>▲</p>		

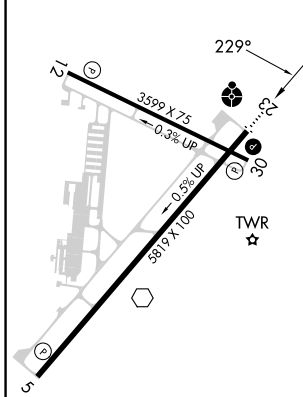
ATIS	POTOMAC APP CON	FREDERICK TOWER ★	GND CON	CLNC DEL	CLNC DEL	UNICOM
124.875	126.1 338.25	132.4 (CTAF) 0	121.975	121.975	126.9 (When twr closed)	122.95



Procedure NA for arrival at EMI VORTAC on airway radials 269 CW 003.

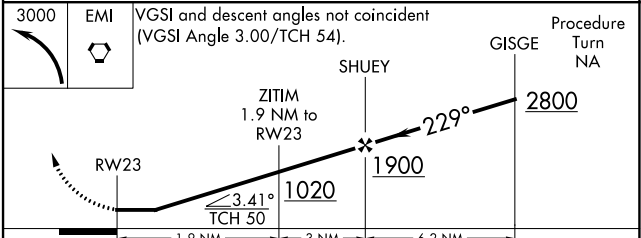


ELEV 306	TDZE 296
----------	----------



WASHINGTON DC METROPOLITAN SFRA

WARNING -- WASHINGTON DC SFRA. CTC POTOMAC APP CON



CATEGORY	A	B	C	D
LNNAV MDA	820-3/4 524 (600-3/4)	820-1 524 (600-1 1/2)	820-1 1/2 524 (600-1 1/2)	820-1 3/4 524 (600-1 3/4)
C CIRCLING	920-1 614 (700-1)	1100-2 1/4 794 (800-2 1/4)	1200-2 3/4 894 (900-2 3/4)	

REIL Rwy 5
REIL Rwys 12, 23 and 30
HIRL Rwy 5-23
MIRL Rwy 12-30

NE-3, 22 FEB 2024 to 21 MAR 2024

NE-3, 22 FEB 2024 to 21 MAR 2024