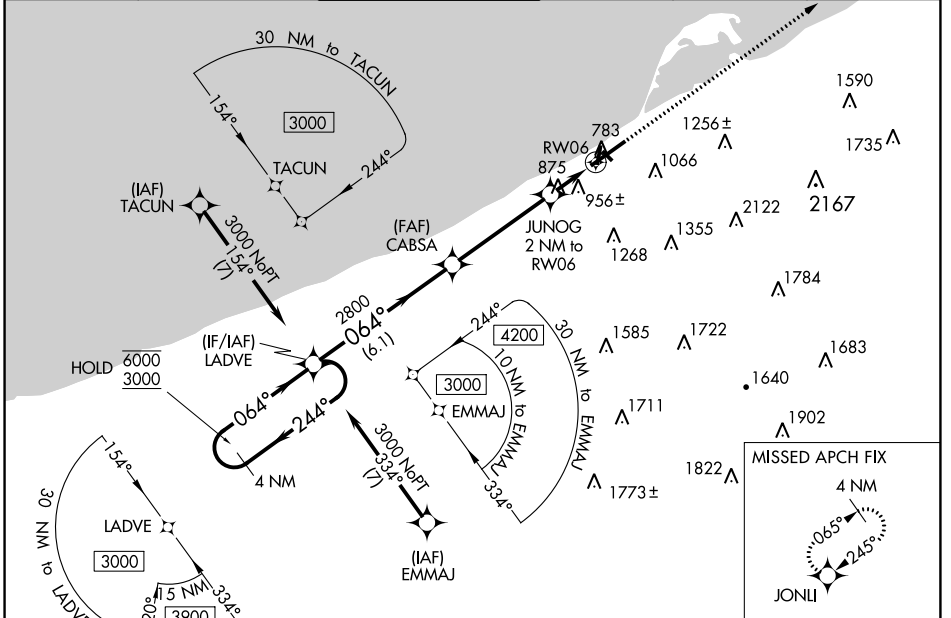


WAAS CH 77612 W06A	APP CRS 064°	Rwy Idg 7501 TDZE 732 Apt Elev 732
----------------------------------------	------------------------	---------------------------------------------------------------

RNAV (GPS) RWY 6

ERIE INTL/TOM RIDGE FLD (ERI)

RNP APCH - GPS.			MALSR	MISSED APPROACH: Climb to 3200 direct JONLI and hold.	
ATIS 120.35	BUFFALO APP CON* 121.0 257.8	ERIE TOWER* 118.1 (CTAF) 0 257.8	GND CON 121.9	CLNC DEL 126.8	UNICOM 122.95



NE-4, 22 FEB 2024 to 21 MAR 2024

NE-4, 22 FEB 2024 to 21 MAR 2024

ELEV 732	TDZE 732			
4 NM Holding Pattern LADVE	3200 JONLI			
6000 ← 244°	3000 → 064°			
GP 3.00°	TCH 55			
2800	1420			
6.1 NM	4.3 NM			
0.6 NM	1.4 NM			
CATEGORY	A	B	C	D
LPV DA	982/24		250 (300-½)	
LNAV/VNAV DA	1256/55		524 (600-1)	
LNAV MDA	1220/24	488 (500-½)	1220/50	488 (500-1)
CIRCLING	1220-1	488 (500-1)	1220-1½ 488 (500-1½)	1340-2 608 (700-2)

The detailed view shows the final approach to RWY 6. The runway is 8420 x 150 feet. The tower (TWR 797) is 150 feet high. The missed approach fix (MISSED APCH FIX) is 4 NM from JONLI. The approach path is shown with a 064° heading and a 0.3308 x 150 slope. Obstacles are marked with their MSL elevations.