

|  |                        |                             |   |
|--|------------------------|-----------------------------|---|
| WAAS<br>CH <b>57927</b><br><b>W12A</b> | APP CRS<br><b>118°</b> | Rwy Idg<br>TDZE<br>Apt Elev | <b>4268</b><br><b>2609</b><br><b>2615</b> |
|--|------------------------|-----------------------------|---|

# RNAV (GPS) RWY 12

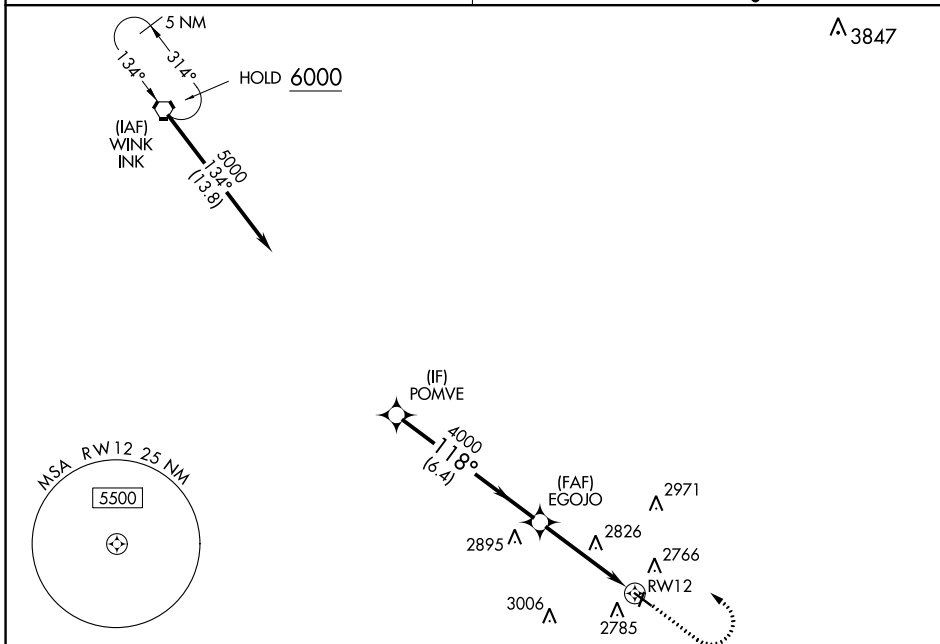
ROY HURD MEML (E01)

**▼** DME/DME RNP-0.30 NA. Obtain local altimeter setting on CTAF; when not received, use Wink altimeter setting. Night landing: Rwy 12 NA. Helicopter visibility reduction below 1 SM NA.

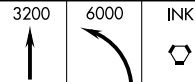
**▲** MISSED APPROACH: Climb to 3200 then climbing left turn to 6000 direct INK VORTAC and hold.

FORT WORTH CENTER  
**133.1 298.95**

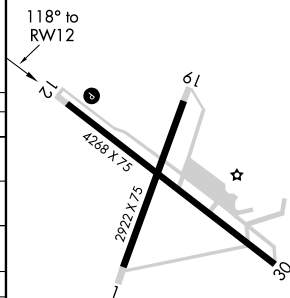
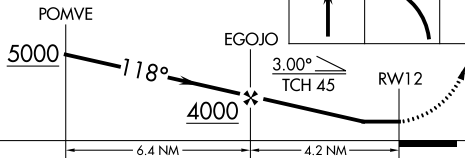
UNICOM  
**122.8 (CTAF)**



VGSI and descent angles not coincident (VGSI Angle 3.00/TCH 24).



ELEV 2615 TDZE 2609



| CATEGORY                        | A      | B           | C  | D  |
|---------------------------------|--------|-------------|--|----|
| LP MDA                          | 3100-1 | 491 (500-1) | 3100-1 $\frac{1}{8}$<br>491 (500-1 $\frac{3}{8}$ ) | NA |
| LNAV MDA                        | 3120-1 | 511 (600-1) | 3120-1 $\frac{3}{8}$<br>511 (600-1 $\frac{3}{8}$ ) | NA |
| CIRCLING                        | 3280-1 | 665 (700-1) | 3280-1 $\frac{3}{4}$<br>665 (700-1 $\frac{3}{4}$ ) | NA |
| WINK ALTIMETER SETTING MINIMUMS |        |             |  |    |
| LP MDA                          | 3180-1 | 571 (600-1) | 3180-1 $\frac{5}{8}$<br>571 (600-1 $\frac{5}{8}$ ) | NA |
| LNAV MDA                        | 3200-1 | 591 (600-1) | 3200-1 $\frac{3}{4}$<br>591 (600-1 $\frac{3}{4}$ ) | NA |
| CIRCLING                        | 3360-1 | 745 (800-1) | 3360-2 $\frac{1}{4}$<br>745 (800-2 $\frac{1}{4}$ ) | NA |

MRL Rwy 1-19 and 12-30

SC-3, 22 FEB 2024 to 21 MAR 2024

SC-3, 22 FEB 2024 to 21 MAR 2024