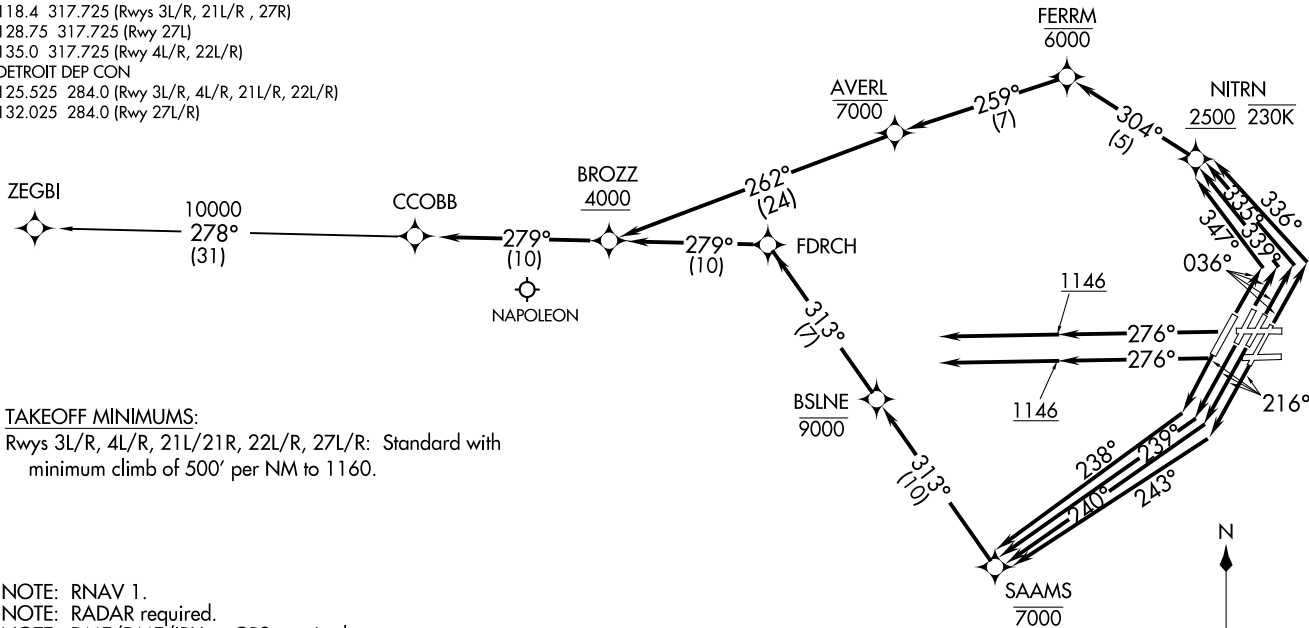


TOP ALTITUDE:
17000

D-ATIS 118.125
 CLNC DEL 120.65
 CPDLC
 GND CON
 121.8 (NW) 119.45 (NE)
 132.725 (SW) 119.25 (SE)
 METRO TOWER
 118.4 317.725 (Rwys 3L/R, 21L/R, 27R)
 128.75 317.725 (Rwy 27L)
 135.0 317.725 (Rwy 4L/R, 22L/R)
 DETROIT DEP CON
 125.525 284.0 (Rwy 3L/R, 4L/R, 21L/R, 22L/R)
 132.025 284.0 (Rwy 27L/R)



TAKEOFF MINIMUMS:

Rwys 3L/R, 4L/R, 21L/21R, 22L/R, 27L/R: Standard with minimum climb of 500' per NM to 1160.

- NOTE: RNAV 1.
- NOTE: RADAR required.
- NOTE: DME/DME/IRU or GPS required.
- NOTE: Turbojet departures at/above 10000, maintain 280K until advised by ATC.
- NOTE: For use by aircraft filed at or below FL220, or as assigned by ATC.
- NOTE: CAUTION: Parachute jumping 6 NM SW of BROZZ, 3 NM radius of Napoleon Airport (3NP) at or below 17999 (SR-SS).
- NOTE: If unable to accept 500' per NM climb rate, advise clearance delivery on initial contact.

NOTE: Chart not to scale.

(NARRATIVE ON FOLLOWING PAGE)

CCOBB TWO DEPARTURE (RNAV)
(CCOBB2.CCOBB) 15AUG19

DETROIT METRO WAYNE COUNTY (DTW)
DETROIT, MICHIGAN

(CCOBB2.CCOBB) 21112
AL-119 (FAA)
CCOBB TWO DEPARTURE (RNAV)

DETROIT METRO WAYNE COUNTY (DTW)
DETROIT, MICHIGAN



DEPARTURE ROUTE DESCRIPTION

NOTE: See additional requirements in RNAV departure AAUP.

TAKEOFF RUNWAY 3L: Climb on heading 036° to intercept course 335° to cross NITRN at or above 2500 and at or below 230K, then on track 304° to cross FERRM at or below 6000, then on track 259° to cross AVERL at or below 7000, then on track 262° to cross BROZZ at or above 4000, thence....

TAKEOFF RUNWAY 3R: Climb on heading 036° to intercept course 336° to cross NITRN at or above 2500 and at or below 230K, then on track 304° to cross FERRM at or below 6000, then on track 259° to cross AVERL at or below 7000, then on track 262° to cross BROZZ at or above 4000, thence....

TAKEOFF RUNWAY 4L: Climb on heading 036° to intercept course 347° to cross NITRN at or above 2500 and at or below 230K, then on track 304° to cross FERRM at or below 6000, then on track 259° to cross AVERL at or below 7000, then on track 262° to cross BROZZ at or above 4000, thence....

TAKEOFF RUNWAY 4R: Climb on heading 036° to intercept course 339° to cross NITRN at or above 2500 and at or below 230K, then on track 304° to cross FERRM at or below 6000, then on track 259° to cross AVERL at or below 7000, then on track 262° to cross BROZZ at or above 4000, thence....

TAKEOFF RUNWAY 21L: Climb heading 216° to intercept course 243° to cross SAAMS at or below 7000, then on track 313° to cross BSLNE at or below 9000, then on track 313° to FDRCH, then on track 279° to cross BROZZ at or above 4000, thence....

TAKEOFF RUNWAY 21R: Climb on heading 216° to intercept course 240° to cross SAAMS at or below 7000, then on track 313° to cross BSLNE at or below 9000, then on track 313° to FDRCH, then on track 279° to cross BROZZ at or above 4000, thence....

TAKEOFF RUNWAY 22L: Climb on heading 216° to intercept course 239° to cross SAAMS at or below 7000, then on track 313° to cross BSLNE at or below 9000, then on track 313° to FDRCH, then on track 279° to cross BROZZ at or above 4000, thence....

TAKEOFF RUNWAY 22R: Climb on heading 216° to intercept course 238° to cross SAAMS at or below 7000, then on track 313° to cross BSLNE at or below 9000, then on track 313° to FDRCH, then on track 279° to cross BROZZ at or above 4000, thence....

TAKEOFF RUNWAYS 27L/27R: Climb on heading 276° to 1146, then on heading 276° or as assigned for RADAR vectors to cross BROZZ at or above 4000, thence....

...on track 279° to CCOBB, then on (transition). Maintain 17000 or as assigned by ATC, expect filed altitude within 10 minutes after departure.

ZEGBI TRANSITION (CCOBB2.ZEGBI):

EC-1, 22 FEB 2024 to 21 MAR 2024

EC-1, 22 FEB 2024 to 21 MAR 2024